

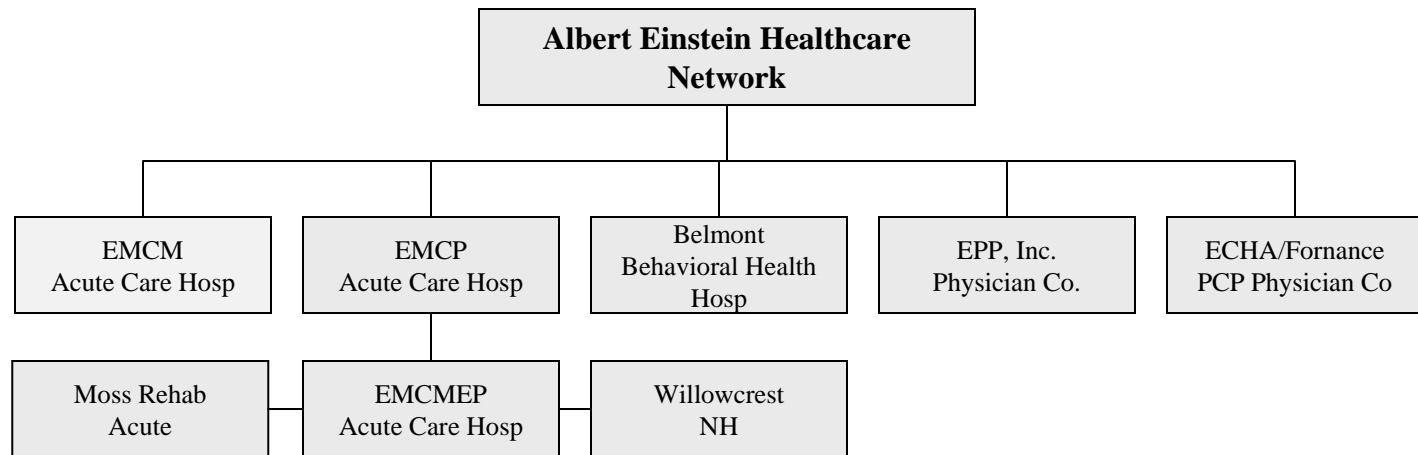
# Care Redesign

Einstein Healthcare Network

Steven L. Sivak, M.D.



# Entities in Network



# Stats

- 25,000 admissions/yr
- 600 Acute Care Beds
- 500 Employed physicians
- 460 Residents/Fellow (EMCP Primarily)
- 1000 Medical Student Rotations
  - Jefferson
  - PCOM
  - Drexel

# Risk Arrangements

- Self Funded Employee Health Benefit (\$60M)
- Commercial Insurance P4P (\$10M)
- BPCI (\$M?)
- ACO (2014)

# Care Redesign

- Population Health Management
  - Primary Care Practices
  - Transitions of Care
  - Healthcare Coordination
  - NH Collaboration
  - Information Systems
  - Creation of a clinically integrated network

# Primary Care

- Medical Home Accreditation
- EMR Installation
- Implementation of a Registry
- Chronic Disease Protocols
  - DM
  - Hypertension
  - Hypercholesterolemia
- Track patients recently discharged

# Transitions of Care

- Discharge Transition Coaches
  - Patients
    - CHF
    - High Risk Patients
  - Process
    - Educate
    - Schedule Appointments
    - Meds on discharge (free for patients who can't pay)
    - F/U call 48 hrs then weekly for 4 weeks

# Transitions of Care

- Incentives for residents
  - F/U call 48 hrs
  - Appointments with PCP w/in one week of discharge
- Appointments in clinic for patients with no insurance



# Healthcare Coordination

- Nurse/NP Assess High Utilizers/Likelihood of hospitalization
  - Treatment plan developed with PCP
- Hand off of dual eligible patients to Philadelphia Corporation for Aging
- Specialty program follow-up
  - CHF
  - COPD/Asthma

# Nursing Home Collaboration

- Developing relationships with nursing homes that will participate in BPCI
- Creating subacute cardiac unit in area nursing home for cardiac patients that require rehab

# Information Systems

- EMR
  - Cerner
    - PCP
    - Specialties
    - Inpatient
- Registry
  - Crimson
- Population Health Management tool for claims data
- Interface for independent providers' EMR

# Clinical Integration

- Structure in which to provide population health management
  - Physician/Administration lead entity
  - Care Management
  - Network Development
  - Financial modeling
  - IT Infrastructure