



Succeeding in BPCI: Clinical ReEngineering

Frederick J. Bloom, Jr. MD MMM
Chief Care Continuum
Geisinger Health System

ProvenCare[®]

Geisinger Health System programs to deliver to patients, families, referring physicians and payers substantially improved quality and value for a defined set of health care services:

1. Document **appropriateness** of care.
2. Establish evidence or consensus-based **best practices**.
3. **Reliably deliver** these by redesign of complex clinical systems by embedding the behaviors into everyday patient flow using the EHR when able.
4. **Activate patients** and families, engaging them in the care processes.
5. Provide a **packaged price** for the episode of care.
6. The “Warranty” **transfers risk** for financial effects of preventable complications to Geisinger.

ProvenCare[®]: Why CABG ?

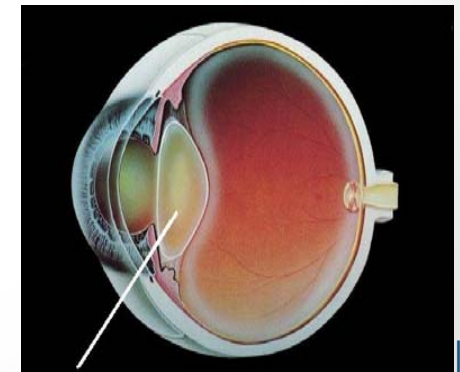
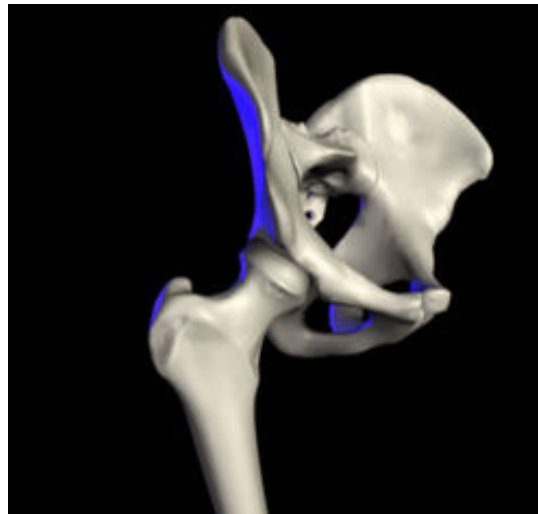
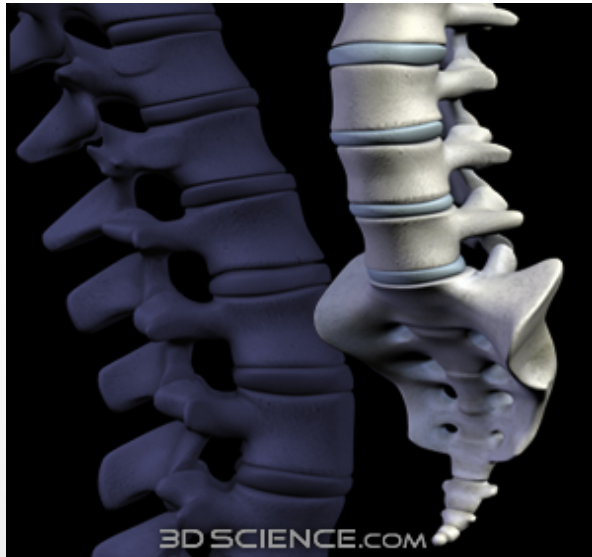
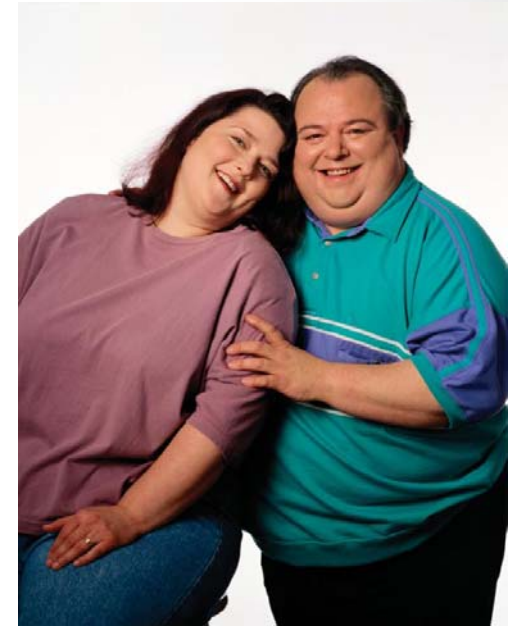
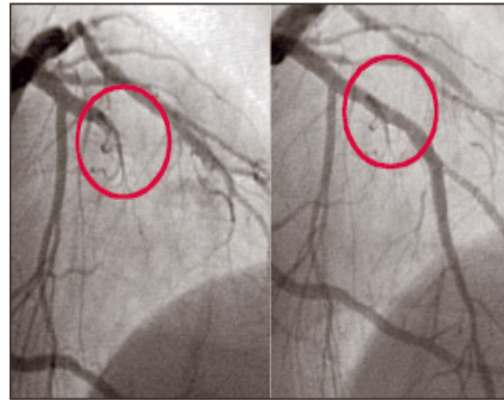
- Motivated clinicians with enthusiastic leadership
- Excellent baseline performance (PHC⁴ data)
- Consensus and evidence based guidelines available
- Established predictive models with historical benchmarks
- Robust data collecting system already in place
- Appropriate volumes and adverse outcomes at rates that allow rapid assessment of impact
- Financially important to system

Clinical Outcomes – Making a Good Program Great

Comparison of before (n=132) and after (n=321) ProvenCare®

- 80% improvement in In-hospital mortality
- 61% reduction in re-intubations
- 63% reduction in deep sternal wound infection rate
- 40% reduction in neurologic complications
- 29% reduction in pulmonary complications
- 20% reduction in 30 day readmissions
w/ 8% reduction in ALOS

Other ProvenCare® Acute Programs



Lessons Learned Along the Way



It is possible to improve patients' health while reducing costs

- Requires change in primary care delivery model; the change is not easy
 - Needs active, engaged providers
 - Needs active, empowered team – “*Top of the License*”
 - Access for acute care and post discharge transitions
- Transitions of care create specific gaps and opportunities
- Patients with very complex conditions need very close follow-up through every system of care