

The Seventeenth National HIPAA Summit
Healthcare Privacy and Security Training and Professional Certification

A Hybrid Conference and Internet Event

**Those Actions that a Covered Entity
(and a Business Associate) Should
Take in Response to a Breach of ePHI**

Frank Ruelas

Director, Compliance and Risk Management, Maryvale Hospital
Principal, www.hipaabootcamp.com

For the purposes of this discussion...

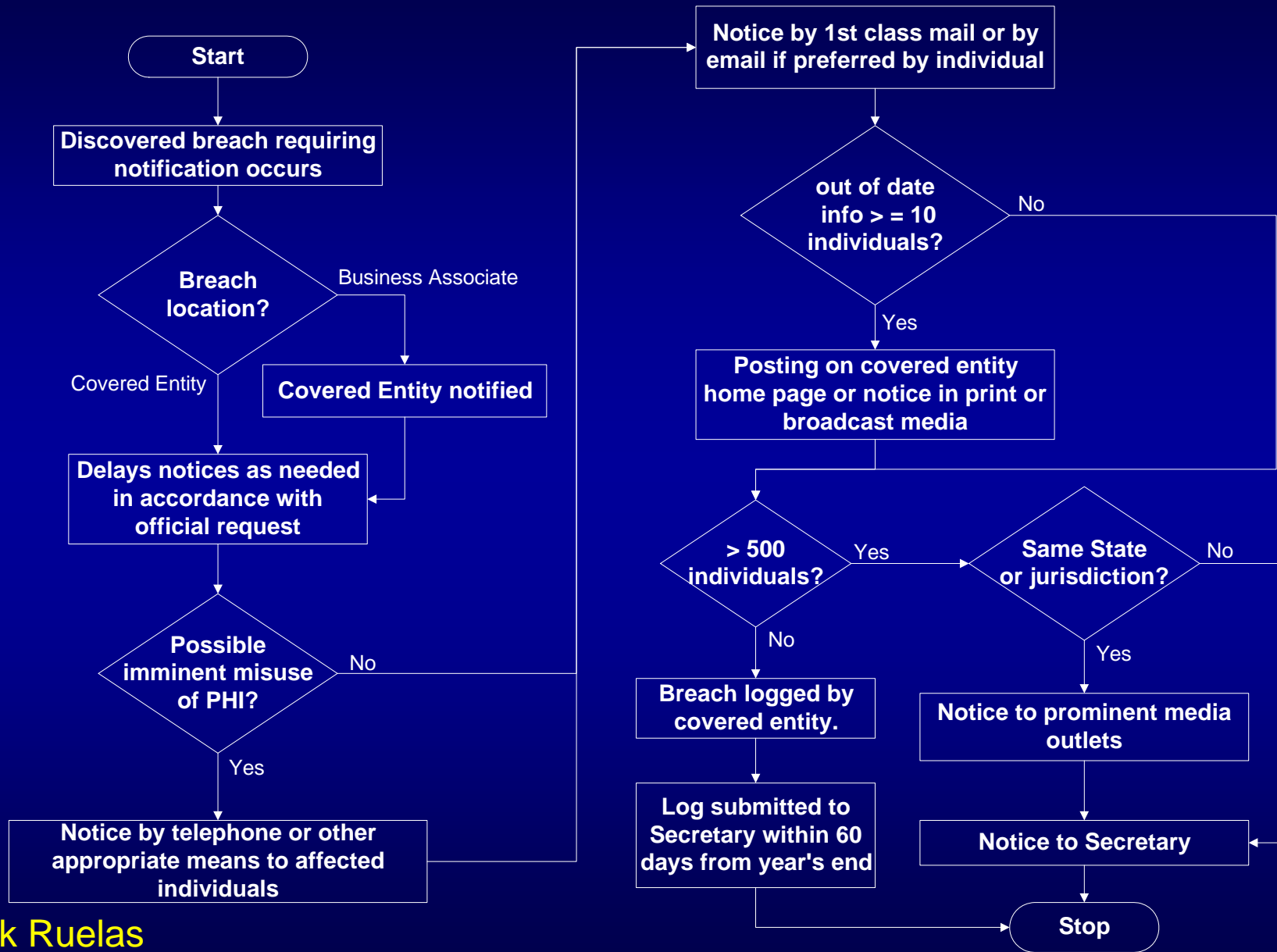
**A discovered breach
requiring notification
has occurred!**

Frank Ruelas

frank@hipaaboutcamp.com

Actions to Take in Response to a Breach of ePHI

The Seventeenth National HIPAA Summit



Frank Ruelas

frank@hipaabootcamp.com

Actions to Take in Response to a Breach of ePHI

**Breach
location?**



- Time zero
- Clarify expectations
- Reasonable diligence



Frank Ruelas

frank@hipaaboutcamp.com

Actions to Take in Response to a Breach of ePHI

**Delays notices as needed
in accordance with
official request**



- Validate request
- Be mindful of delay
- Don't stall efforts

Possible
imminent misuse
of PHI?

- In addition to...
- Sense of urgency



The Seventeenth National HIPAA Summit

out of date
info ≥ 10
individuals?

- Living...or not?
- Keep data current

The screenshot shows a web browser window with the address bar displaying `http://best_hospital.com`. The page content includes three 'U.S. News America's Best HOSPITALS' award medals for the years 2007, 2008, and 2009-10, a 'Distinguished Hospital' award for 2009, and a photograph of a large hospital building. A black rectangular box is overlaid on the bottom half of the page, containing the text 'BREACH ALERT!' in white, a glowing red sphere, and a yellow arrow pointing from the sphere towards the left. A red starburst graphic with the word 'Ouch!' is positioned to the left of the screenshot.

Ouch!

Frank Ruelas

frank@hipaabootcamp.com

Actions to Take in Response to a Breach of ePHI

The Seventeenth National HIPAA Summit

> 500
individuals?

Same State
or jurisdiction?

- Location
- Laptops
- 52% of 107
- 51,554¹



¹Source: August Guidance, Table 3, page 88.

Frank Ruelas

frank@hipaabootcamp.com

Actions to Take in Response to a Breach of ePHI