



X12's Plans for Version 7030™ Technical Reports

March 31, 2017

DISCLAIMER

This presentation is for informational purposes only.

- This presentation is not intended to represent legal advice.
- The content is point-in-time information, which is subject to revision.
- If you have questions regarding specific information shared during this presentation, please send them to info@x12.org
- Visit www.x12.org for additional details about X12



This presentation will provide you with information related to the HIPAA-mandated X12 transactions, just some of the transactions under development at X12.

You will find helpful information at the end of the presentation, please reference these links for your information.

X12's Goals

- Publish updated HIPAA adopted transaction implementation guides based upon version 007030
- Recommend these 007030 implementation guides be adopted under HIPAA spanning from version 005010 to 007030

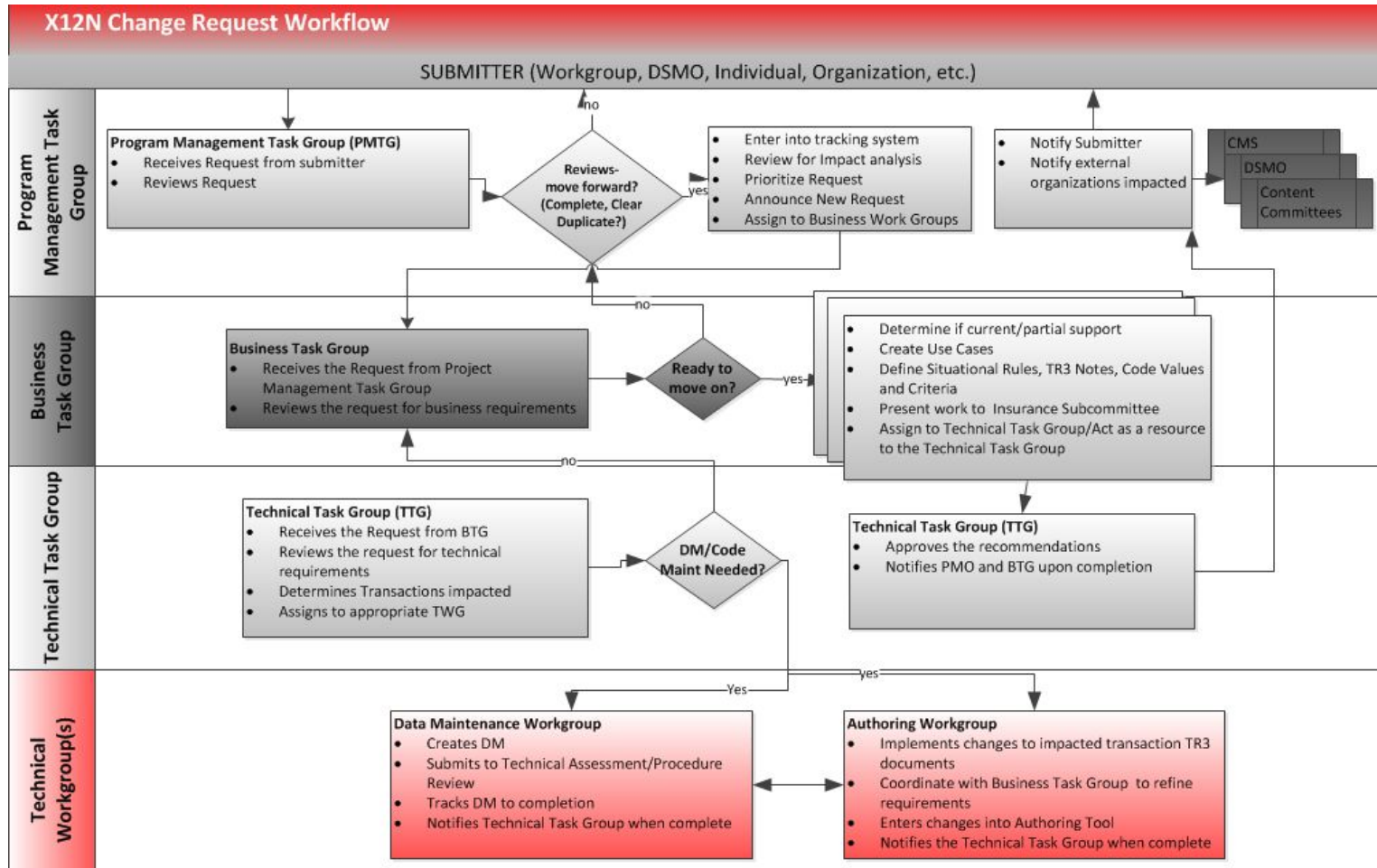
HIPAA Mandated Transactions - Current

| Doc. ID | Trans. Set | Title |
|---------|------------|--|
| X220A1 | 834 | Benefit Enrollment and Maintenance |
| X218 | 820 | Payroll Deducted & Other Group Prem Payment for Insurance Products |
| X212 | 276/277 | Health Care Claim Status Request and Response |
| X221A1 | 835 | Health Care Claim Payment/Advice |
| X222A1 | 837P | Health Care Claim: Professional |
| X223A2 | 837I | Health Care Claim: Institutional |
| X224A2 | 837D | Health Care Claim: Dental |
| X279A1 | 270/271 | Health Care Eligibility/Benefit Inquiry and Information Response |
| X217 | 278 | Health Care Services Request for Review and Response |

HIPAA Mandated Transactions - Expected

| Doc. ID | Trans. Set | Title |
|---------|------------|--|
| X333 | 834 | Benefit Enrollment and Maintenance |
| X334 | 820 | Payroll Deducted & Other Group Prem Payment for Insurance Products |
| X329 | 276/277 | Health Care Claim Status Request and Response |
| X322 | 835 | Health Care Claim Payment/Advice |
| X323 | 837P | Health Care Claim: Professional |
| X324 | 837I | Health Care Claim: Institutional |
| X325 | 837D | Health Care Claim: Dental |
| X332 | 270/271 | Health Care Eligibility/Benefit Inquiry and Information Response |
| X342 | 278 | Health Care Services Request for Review and Response |

PLANS FOR X12 STANDARDS VERSION 7030



PLANS FOR X12 STANDARDS VERSION 7030

Estimated # of Change Requests Applied

| Doc. ID | Trans. Set | Title | CRs Applied |
|---------|------------|--|--------------|
| X333 | 834 | Benefit Enrollment and Maintenance | Approx. 42 |
| X334 | 820 | Payroll Deducted & Other Group Prem... | More than 10 |
| X329 | 276/277 | Health Care Claim Status Request and... | Approx. 304 |
| X322 | 835 | Health Care Claim Payment/Advice | Approx. 207 |
| X323 | 837P | Health Care Claim: Professional | Approx. 315 |
| X324 | 837I | Health Care Claim: Institutional | Approx. 248 |
| X325 | 837D | Health Care Claim: Dental | Approx. 213 |
| X332 | 270/271 | Health Care Eligibility/Benefit Inquiry... | TBD |
| X342 | 278 | Health Care Services Request for... | TBD |

What happens after the work groups make revisions based on the change requests?

- Public Review/Comment Period
 - A period of time during which the draft implementation guide and a high-level change summary is available to the public
 - Comments on the draft are encouraged and accepted during this period.

What happens after the work groups make revisions based on the change requests?

- Informational Forum
 - A public presentation summarizing the comments received and how the work group decided to address the comments.

Where are we in the workflow?

This guide has been through a public review/comment period, had an informational forum, and been approved to move forward in the X12 approval process.

| | | |
|------|-----|------------------------------------|
| X333 | 834 | Benefit Enrollment and Maintenance |
|------|-----|------------------------------------|

These guides have been through a public review/comment period and the work group has determined their response to posted comments. The next step is review of the comment responses at an informational forum. Informational forums are open to the public.

| | | |
|------|---------|--|
| X334 | 820 | Payroll Deducted & Other Group Prem Payment for Insurance Products |
| X329 | 276/277 | Health Care Claim Status Request and Response |
| X322 | 835 | Health Care Claim Payment/Advice |

Where are we in the workflow?

These guides are currently in a public review/comment period. The next step is for the work group to define their comment responses.

| | | |
|------|------|---|
| X323 | 837P | Health Care Claim: Professional (Comment period ends 6/1/17) |
| X324 | 837I | Health Care Claim: Institutional (Comment period ends 6/1/17) |
| X325 | 837D | Health Care Claim: Dental (Comment period ends 6/1/17) |

These guides have not yet been through public review. The next step is the public review/comment period.

| | | |
|------|---------|---|
| X332 | 270/271 | Health Care Eligibility/Benefit Inquiry and Information Response (Comment Period TBD) |
| X342 | 278 | Health Care Services Request for Review and Response (Comment Period TBD) |

How You Can Get Involved

- Review the draft implementation guides to ensure the instructions are clear and accurate and that your organizational needs are supported. X12 values input from both members and the public during these reviews
- Attend the Informational Forums to understand how comments are being resolved. X12 members and the public are welcome at these sessions

How You Can Get Involved

- Join X12 and collaborate with other industry representatives as we develop mission-critical standards that increase efficiency and consistency across trading partners

Check out the X12 Website at x12.org

- Info about X12
- Membership application
- Standards Maintenance Forms - including the Change Request form
- Requests for Interpretations related to the use of X12 EDI transactions
- Other Resources related to the EDI Standards
- Public review forums are at forums.x12.org

Questions?



Thank You

Email: info@x12.org

Web: www.x12.org

Follow X12 on social media to stay informed

Twitter: [@ASCX12](https://twitter.com/ASCX12)

LinkedIn: [X12](https://www.linkedin.com/company/x12)

