

## HIPAA Summit West



### **HIPAA DDE, XML, and the Web**

Wednesday March 13, 2002  
San Francisco, CA

Gary Beatty  
Chair X12N Insurance Subcommittee  
President - EC Integrity  
507-250-3574  
gmb803@earthlink.net

---

---

---

---

---

---

---

---

## Limitations & Concerns

- Timing
- Accuracy
- Handling
- Reconciliation
- Storage



---

---

---

---

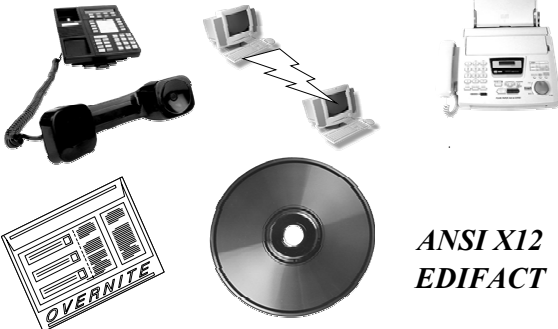
---

---

---

---

## OPTIONS



**ANSI X12  
EDIFACT**

---

---

---

---

---

---

---

---

## What is EDI



Electronic Exchange of  
Business Documents  
Business Data  
Information  
*(without human interface)*

Using a **Public Standard** Formats

---

---

---

---

---

---

---

---

## What is EC



The application of technology toward  
the automation of business  
transactions and workflow

*Kalakota & Whinston, 1997*

- EDI
- Internet
- Email
- Imaging
- Intranet
- Fax

---

---

---

---

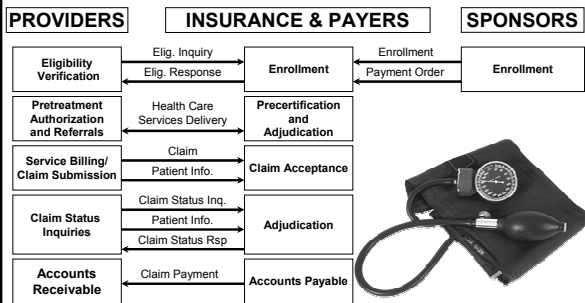
---

---

---

---

## HIPAA Transactions Business Model




---

---

---

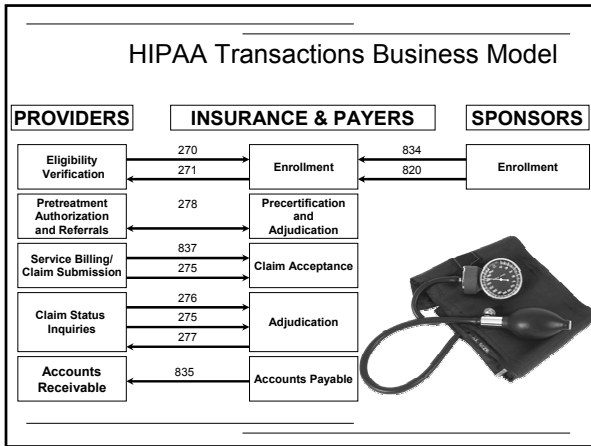
---

---

---

---

---




---

---

---

---

---

---

---

---

---

---

### X12 Standards

- 1. Unabridged**
- 2. No Technical Answers**
- 3. Series of Business Questions**

---

---

---

---

---

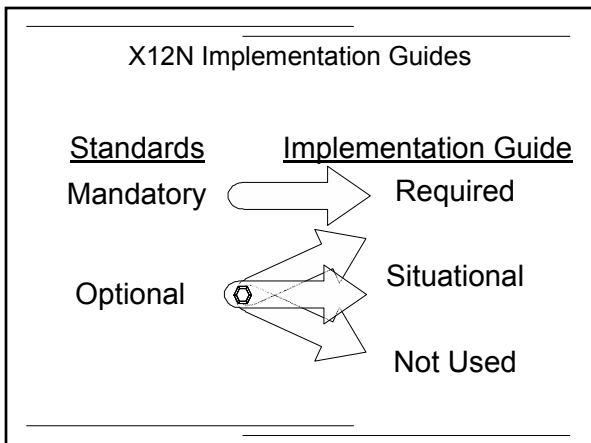
---

---

---

---

---




---

---

---

---

---

---

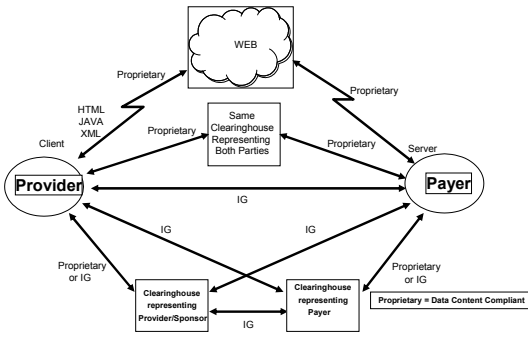
---

---

---

---

## Transaction Paths



---

---

---

---

---

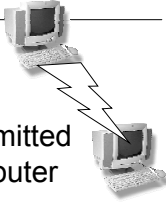
---

---

---

## Direct Data Entry (DDE)

Direct entry of data that is immediately transmitted into a health plans computer



### Person to Computer

#### Browser to Server

(Internet, Extranet, HTML, Java, ActiveX, XML, etc.)

#### Dumb Terminals

#### Terminal Emulators

#### Point of Service Terminals

#### Telephone Voice Response Systems

---

---

---

---

---

---

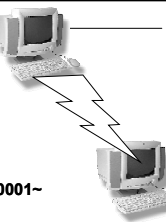
---

---

## Direct Data Entry (DDE)

### Format NOT Required

ST\*270\*1234~  
BHT\*0022\*13\*10001234\*19990501\*1319~  
HL\*1\*\*20\*1~  
NM1\*PR\*2\*ABC COMPANY\*\*\*\*\*PI\*842610001~  
HL\*2\*1\*21\*1~  
NM1\*1P\*1\*JONES\*MARCUS\*\*\*\*SV\*0202034~  
HL\*3\*2\*22\*0~  
TRN\*1\*93175-012547\*9877281234~  
NM1\*1L\*1\*SMITH\*ROBERT\*B\*\*\*MI\*1122333301~  
REF\*1L\*599119~  
DMG\*D8\*19430519\*M~  
DTP\*472\*D8\*19990501~  
EQ\*98\*\*FAM~  
SE\*14\*1234~



---

---

---

---

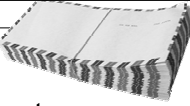
---

---

---

---

## Direct Data Entry (DDE)



### Data Content Requirements

- All "Required" & "Situational" Business Data Content (unless the data are already available on the health plan's system)
- Adhere to code set requirements
- Field Sizes no less and no more than min/max sizes
- Field Repeats no less and no more than specified in the implementation guides

---

---

---

---

---

---

---

---

## X12 XML Design Rules



### Goals:

- To deliver unambiguous and durable business transactions via electronic means
- Utilize existing systems and processes
- Protect the investment in traditional EC/EDI
- Provide a migration path to next generation XML/EDI systems
- Use existing business processes as implemented
- Facilitate direct interoperation in an open environment

---

---

---

---

---

---

---

---

## ebXML



### UN/CEFACT & OASIS

- Messaging Services
- Registries and Repositories
- Collaborative Protocol Profile
- Implementation, Interoperability, and Conformance
- Core Components and Business Process Models

---

---

---

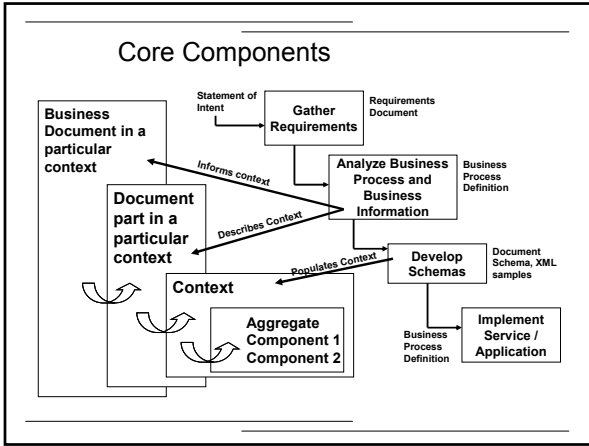
---

---

---

---

---



---

---

---

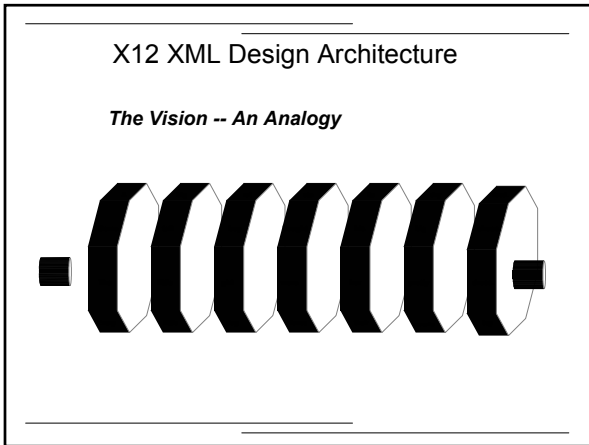
---

---

---

---

---



---

---

---

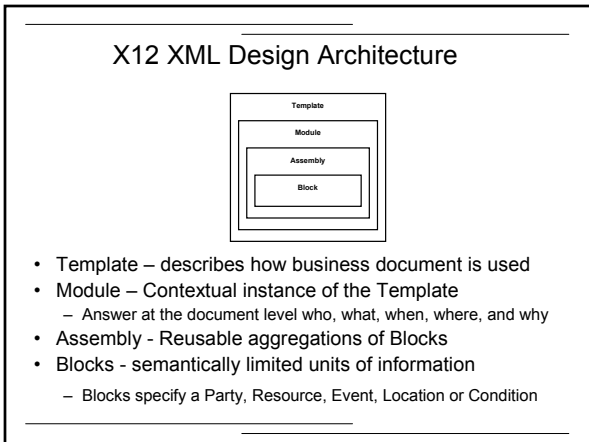
---

---

---

---

---



---

---

---

---

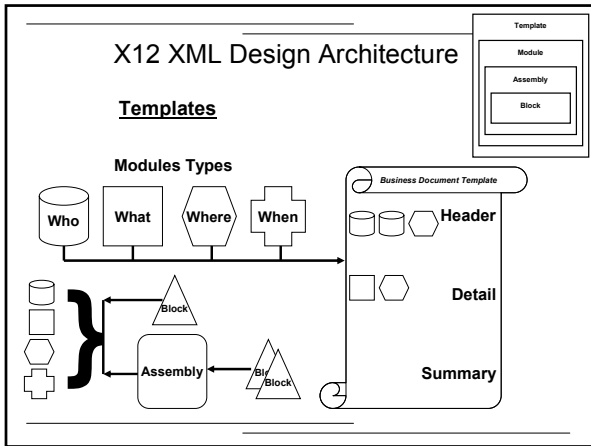
---

---

---

---

# HIPAA Summit West – HIPAA, DDE, XML, & Web




---

---

---

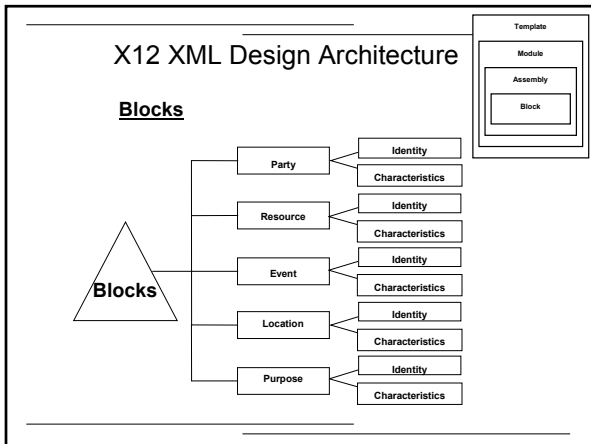
---

---

---

---

---




---

---

---

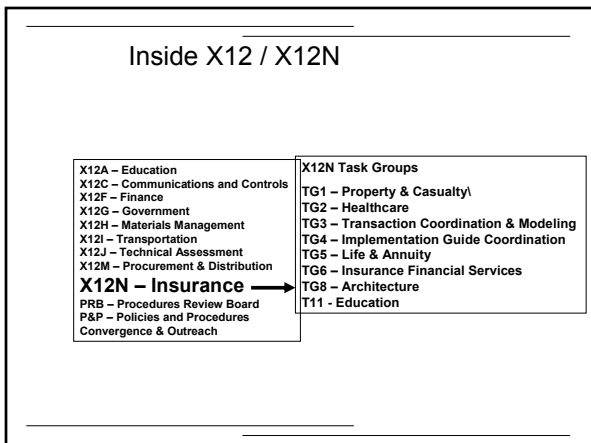
---

---

---

---

---




---

---

---

---

---

---

---

---

## Inside X12 / X12N

<b>WG1 – Eligibility</b> WG2 – Healthcare Claims WG3 – Healthcare Claim Payment/Advice WG4 – Enrollment WG5 – Claim Status WG9 – Patient Information WG10 – Healthcare Services Review WG12 – Interactive Claims WG15 – Provider Information	<b>X12N Task Groups</b> TG1 – Property & Casualty TG2 – Healthcare TG3 – Transaction Coordination & Modeling TG4 – Implementation Guide Coordination TG5 – Life & Annuity TG6 – Insurance Financial Services TG8 – Architecture T11 – Education
--	---

---

---

---

---

---

---

---

---

---

---

## X12N Business and Data Modeling

- Business Modeling
  - Data Modeling
  - Object Descriptors
    - Technology neutral names for business objects
    - 3GL field names
    - Data base schemas
    - XML tags
    - Etc. etc. etc.
- COBOL      Pascal      <Provider Last Name>      MS SQL  
Fortan      Oracle      Sybase  
Access      <Patient Telephone Number>

---

---

---

---

---

---

---

---

---

---

# Thank You

[www.x12.org](http://www.x12.org)  
[www.disa.org](http://www.disa.org)  
[www.wedi.org](http://www.wedi.org)  
[aspe.hhs.gov/admsimp](http://aspe.hhs.gov/admsimp)  
[www.wpc-edi.com](http://www.wpc-edi.com)



---

---

---

---

---

---

---

---

---

---