



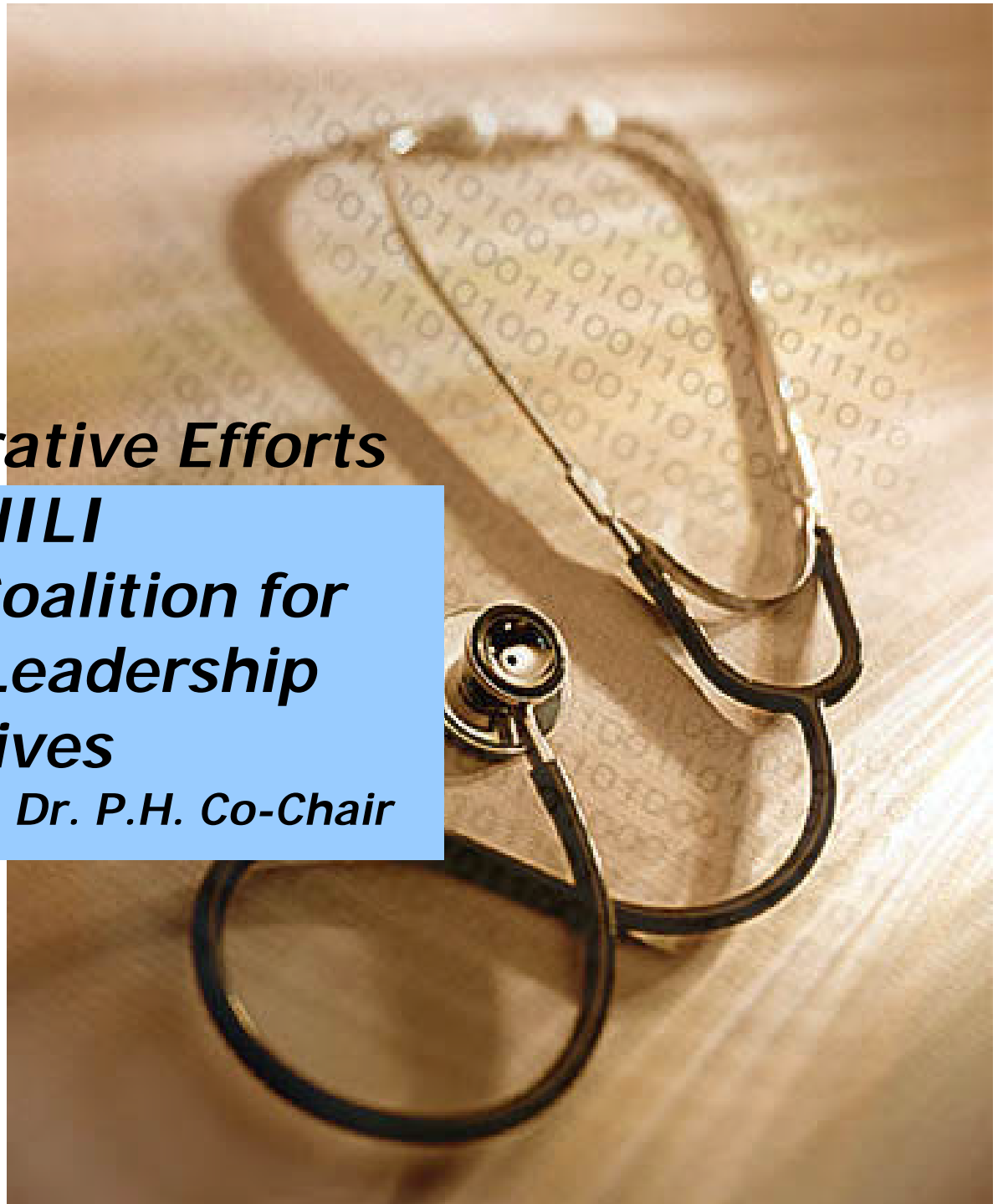
HIPAA Collaborative Efforts

NM CHILI

***New Mexico Coalition for
Health Care Leadership
Initiatives***

Suzanne Kotkin-Jaszi, Dr. P.H. Co-Chair

HIPPA Summit West II
Friday, March 15, 2002



Agenda

- ◆ About New Mexico
 - ◆ Context for Coalition Development
 - ◆ History of NM CHILI
-

- ◆ Organizational Chart of NM CHILI
- ◆ Funding Issues
- ◆ HIPAA Awareness Program
- ◆ NM CHILI HIPAA Conference
- ◆ Lessons Learned

What's Unique About New Mexico?

- ◆ **New Mexico is the 5th largest state**
- ◆ **New Mexico is poor, per capita personal income ranked 49th nationally in 2000.**
- ◆ **New Mexico is rural, population density is 14.3 persons per square mile.**
- ◆ **New Mexico has a high rate of uninsured residents 23.7% according to the CPS, U. S. Census Bureau, 2000.**
- ◆ **New Mexico providers tend to be “un-networked” and individual providers working without access to technology, e.g. personal computers are uncommon.**
- ◆ **HIPAA is an un-funded federal mandate and the level of resistance is high.**

Context for Coalition Development

- ◆ **Unfunded federal mandate**
- ◆ **Difficulty in competing for legislative attention with other more direct needs, e.g. economic downturn, Medicaid expansion, etc.**
- ◆ **Small providers who are not members of managed care networks**
- ◆ **Recognition early on that HIPAA had widespread ramifications for how NM health care organizations would do business**

History of NM CHILI

- ◆ Grew out of existing health information alliance of the NM HPC.
- ◆ Driven by the unfunded federal HIPAA mandate
- ◆ Two conferences, one in October 2000 and a second in October 2001 were used to kick-off and expand NM CHILI.
- ◆ A public-private coalition of state agencies, health care plans, providers, and vendors.
- ◆ Not a single issue entity, but focused on e-health care.

Who does it affect?

◆ Health Plans:

- ▲ Individual or group plans that provides or pays the cost of medical care
- ▲ Employers who self-insure

◆ Providers

- ▲ Includes a provider of medical or other health services and any other person furnishing health care services or supplies

◆ Health Care Clearinghouse

- ▲ A public or private entity that processes or facilitates the processing of nonstandard data elements of health information into standard data elements

◆ Other Affected Entities

- ▲ Employers who want to do data mining
- ▲ Pharmaceuticals conducting clinical research

Impact of HIPAA on the Health Care Industry

- ◆ **The most sweeping legislation to affect the health care industry in over 30 years**
- ◆ **Industry consensus is that the impact will be more extensive than the Year 2000 Problem**
 - ▲ Experts predicts large health plans will have to spend \$50 to \$200 million to become HIPAA compliant
- ◆ **Nearly everyone in healthcare**
 - ▲ Payers, employers, providers, clearinghouses, health care information systems vendors, billing agents, and service organizations
- ◆ **Nearly every business process**
- ◆ **All individually identifiable information relating to**
 - ▲ Past, present, or future health conditions, treatment or payment for treatment
 - ▲ Demographic data collected by plans or providers

Implementation Implications

◆ Short Timeframe

- ▲ Health care organizations have only 2 or 3 years to comply with HIPAA regulations

◆ Broad Scope

- ▲ HIPAA will impact all functions, processes and systems that store, handle or generate health information

◆ Drastic Impact

- ▲ HIPAA is requiring health care organizations to completely rethink the manner in which they protect the security and privacy of patients and consumers
- ▲ HIPAA is mandating standard formats for the most common transactions between health care organizations
- ▲ Many health care organizations will need to replace or substantially change their current systems and processes to comply with HIPAA regulations

◆ Strategic Issues

- ▲ HIPAA electronic standards and security requirements will become key enablers to e-business

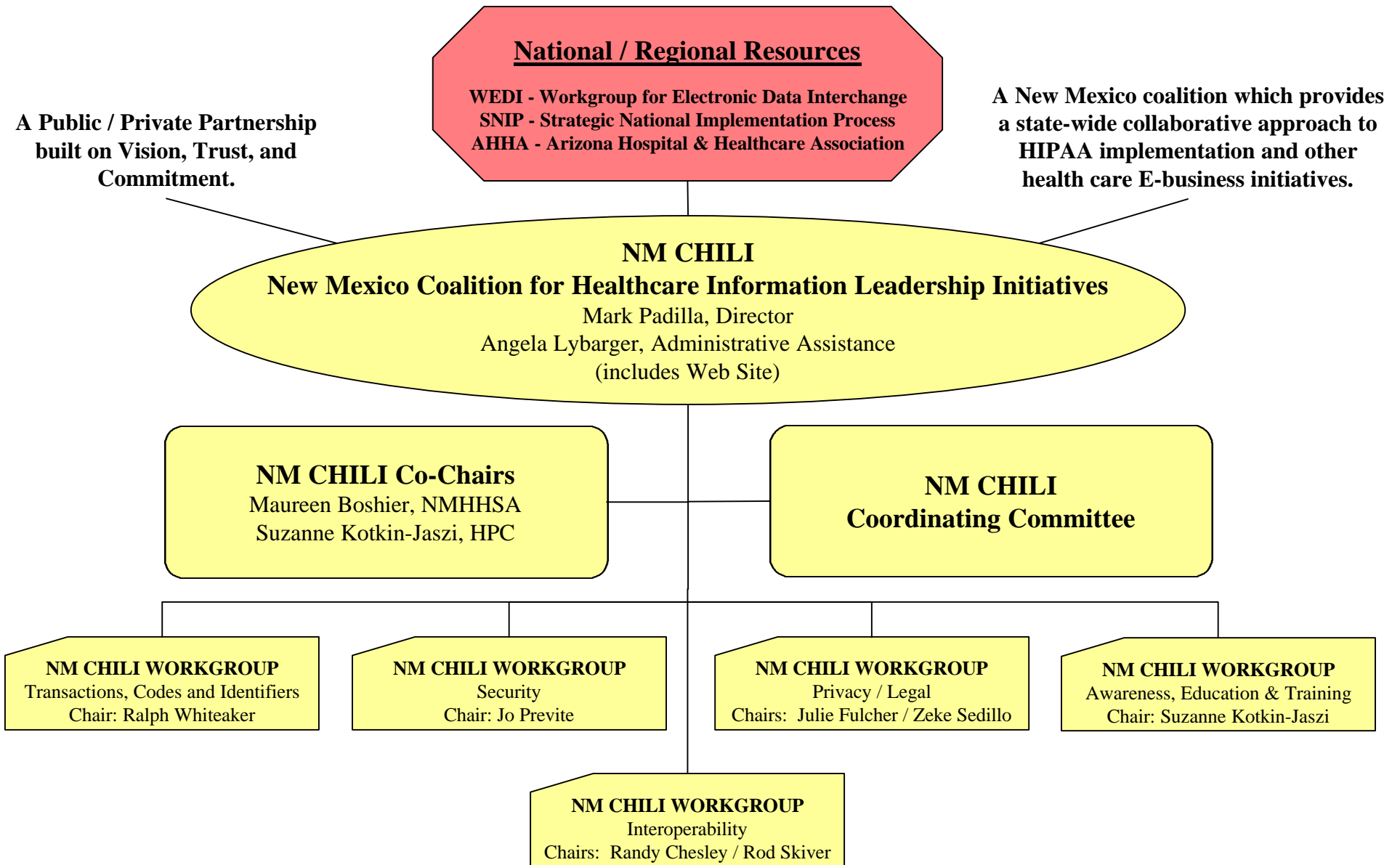
What should Health Care Organizations do?

- ◆ Enhance organizational awareness of HIPAA
- ◆ Perform HIPAA compliance assessment
- ◆ Develop recommendations and work plans for remedying any identified HIPAA deficiencies
- ◆ Review the organization's strategic business initiatives (e.g., e-business, revenue growth, cost reduction) with regards to impacts and opportunities created by HIPAA
- ◆ Incorporate strategic business initiatives with HIPAA recommendations
- ◆ Execute HIPAA initiatives

Why Collaborate?

- ◆ Standards are dependant on consistent policies, practices and technology among business partners
- ◆ Actions of a business partner may generate liabilities for one's own organization
- ◆ Sloppy planning and inefficient implementation will be costly to everyone
- ◆ HIPAA compliance crosses local political boundaries
- ◆ National coordination and guidance will be exceedingly helpful
- ◆ Overcome realized shortage of resources (monetary and human)

NM CHILI Organizational Chart



NM CHILI Organization Participants

- ◆ Health Policy Commission
- ◆ Department of Health
- ◆ Presbyterian Health Care
- ◆ University of NM
- ◆ St. Vincent Hospital
- ◆ Blue Cross Blue Shield
- ◆ Lovelace HMO
- ◆ Cimarron Health Plan
- ◆ Indian Health Services
- ◆ NM Hospital and Health Services Association
- ◆ NM Medical Society
- ◆ NM Health Resources
- ◆ NM Medical Review Assoc.
- ◆ Vendors: POD Assoc., Fox Systems, Foresight Group, ACS, RHI

Need for Start-Up Funding

- ◆ Funding of Meetings Facilitation Contract
- ◆ Funding of Administrative Assistant, Angela Lybarger
- ◆ Development of NM CHILI Website and Hosting on HPC Server
- ◆ HIPAA Conference Support:
 - ▲ Contract with NM Health Resources for Logistics/Proceedings
 - ▲ Contract with Jo Powell for National Speakers and Vendors
- ◆ Co-Chair of NM CHILI Coordinating Committee
- ◆ Chair of HIMT – Health Information Management Team
 - ▲ DOH, HSD, CYFD, HPC and NMRHA
- ◆ Staffing HIPAA Conference
 - ▲ Registration Support
 - ▲ Audio-Visual Technical Support
 - ▲ Moderation of Panels

Initial Steps

- ◆ Industry born
- ◆ Leadership commitments from key players
- ◆ State-wide organization (NM CHILI)
 - ▲ Commitment
 - ▲ Vision
 - ▲ Trust
- ◆ Design workgroups and begin to meet
- ◆ Widen membership base

Next Steps

- ◆ Continue organizational awareness and education
 - ▲ Review Final Rules for impact
 - www.hipaadvisory.com
- ◆ Join NM CHILI Workgroups
 - ▲ Contact Mark Padilla, NM CHILI Director
mpadilla@hchorizons.com
Angela Lybarger, NM CHILI Administrative Assistant
angelalybarger@hotmail.com
- ◆ Build NM CHILI momentum

NM CHILI WEBSITE

NM CHILI

*New Mexico Coalition for Healthcare
Information Leadership Initiatives*

[About NM CHILI](#) [Membership](#) [News & Upcoming Events](#) [HIPAA Resources](#) [Work Groups](#) [Contact Us](#)

About NM CHILI

[Director's Message](#)
[NM CHILI Sponsors](#)
[NM CHILI Document Library](#)
[How to Join NM CHILI](#)
[Organization Chart](#)
[NM CHILI Brochure](#)
[2001 HIPAA Conference](#)

Welcome to the New Mexico Coalition for Healthcare Information Leadership Initiatives (NM CHILI) web site! NM CHILI is a public/private state-wide organization which is designed to help the New Mexico healthcare industry become compliant with HIPAA regulations and other healthcare e-business initiatives. NM CHILI is a volunteer organization with administrative support from the Health Policy Commission and member organizations. The structure includes a Director, co-Chairs, a Coordinating Committee and five workgroups. An organizational chart is provided in the NM CHILI Document Library. These workgroups provide the structure for effective collaboration between entities.

Mission Statement:


A New Mexico based-coalition which provides a state-wide

NM CHILI HIPAA Resources - Microsoft Internet Explorer

File Edit View Favorites Tools Help

Back Forward Stop Home Search Favorites History Print W

Address http://www.healthlinknm.org/nmchili/HIPAA_Resources/HIPAA_resources.htm Go Links



*New Mexico Coalition for Healthcare
Information Leadership Initiatives*

[About NM CHILI](#) [Membership](#) [News & Upcoming Events](#) [HIPAA Resources](#) [Work Groups](#) [Contact Us](#)

HIPAA Resources

[NM CHILI Document Library](#)
[Other HIPAA Links](#)

- [What is HIPAA?](#)
- [Who's Covered?](#)
- [HIPAA Provisions](#)
- [Practical View of HIPAA](#)
- [Assess All HIPAA Provisions](#)
- [Many Factors will Influence HIPAA Efforts](#)
- [HIPAA Technology Provisions](#)
- [HIPAA Security vs. Privacy](#)
- [Relationship between Privacy and Security](#)

What is HIPAA?

The Health Insurance Portability and Accountability Act of 1996 is probably the most sweeping legislation to affect the healthcare industry in the last thirty years. The Administrative Simplification

Done Internet

HIPAA Awareness & Preparedness Program

- ◆ Half-day sessions to be presented across New Mexico, covering all major regions of the state. Will tie into the NM CHILI Program.
- ◆ Overview Materials and Action Packs will be developed, along with guidelines for working with vendors/consultants and a vendors list.
- ◆ A computer demonstration model will illustrate, hands-on, implementing HIPAA requirements.
- ◆ Example Roles of Doctor, Nurse, Office Manager and Patient will illustrate effects of HIPAA requirements.

Program Promotion & Locations

- ◆ **The HIPAA Awareness & Preparedness Program will be marketed via health organizations, state agencies & media.**
- ◆ **Tentative locations include:**
- ◆ **Farmington, Gallup, Deming, Alamogordo, Lovington, Clovis, Las Vegas, Raton**
- ◆ **Santa Fe, Espanola, Albuquerque, Socorro, Las Cruces, Roswell**

Building NM CHILI

Second Annual New Mexico HIPAA Conference

brought to you by the...

New Mexico

***Coalition for Healthcare Information Leadership
Initiatives***

*New Mexico's forum on Healthcare Privacy, Security and
Statewide HIPAA Implementation/Collaboration.*

*Membership includes healthcare providers, payers, and
managers of healthcare information from the public and
private sector.*

OCTOBER 22-23, 2001

Wyndham Hotel Albuquerque at International Sunport

Organization Sponsors:

- NM Health Policy Commission*
- Presbyterian Healthcare Services*
 - NM Department of Health*
 - Cimarron Health Plan*
- NM Human Services Department*
 - University of New Mexico*
 - NM Heart Institute*
 - Lovelace Health Plan*
 - NM Health Resources*
- NM Hospitals and Health Systems Association*
- National Association of Health Data Organizations*

Exhibitor Sponsors:

**◆ Affiliated Computer
Services**

CGI

◆ FOURTHOUGHTGROUP

◆ FOX systems

◆ Health Extranet

◆ POD Associates

Lessons Learned

- ◆ **Need to have seed money for basic infrastructure**
- ◆ **Difficult to maintain participation beyond compliance officers**
- ◆ **Must develop products for stakeholders, assessment tools, pre-emption analysis, etc.**
- ◆ **NM CHILI must evolve to either a not-for-profit or other organizational form.**
- ◆ **Single entity organizations e.g. HIPAA focus only will eventually die, focus should be broad.**

Questions?

