

Post Affordable Care Act
*Strategic Value of
Meaningful Use*

Anthony Rodgers,
Deputy Administrator
October 2010

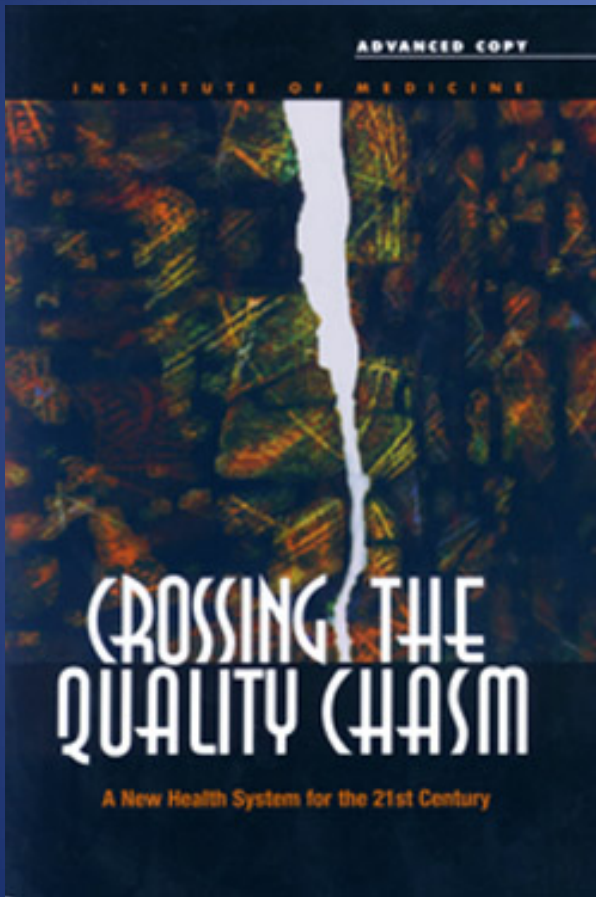
The Triple Aim Goals of CMS

- Better Care
 - Patient Safety
 - Quality
 - Patient Experience
- Reduce Per Capita Cost
 - Reduce unnecessary and unjustified medical cost
 - Reduce administrative cost thru process simplification
- Improve Population Health
 - Decrease health disparities
 - Improve chronic care management and outcome
 - Improve community health status

Better Care

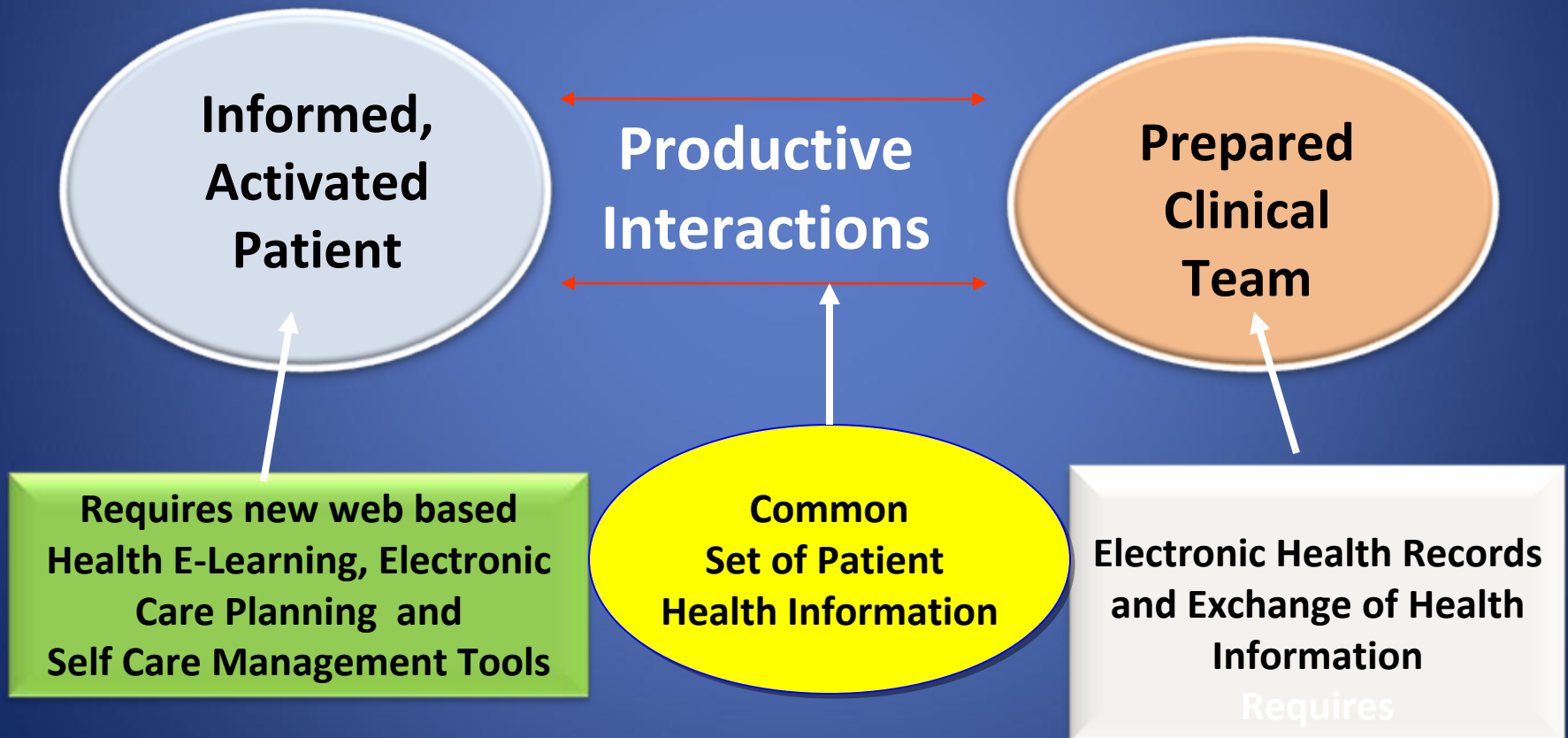
Closing the Quality Chasm

CMS Specific Aims for Health System Improvement

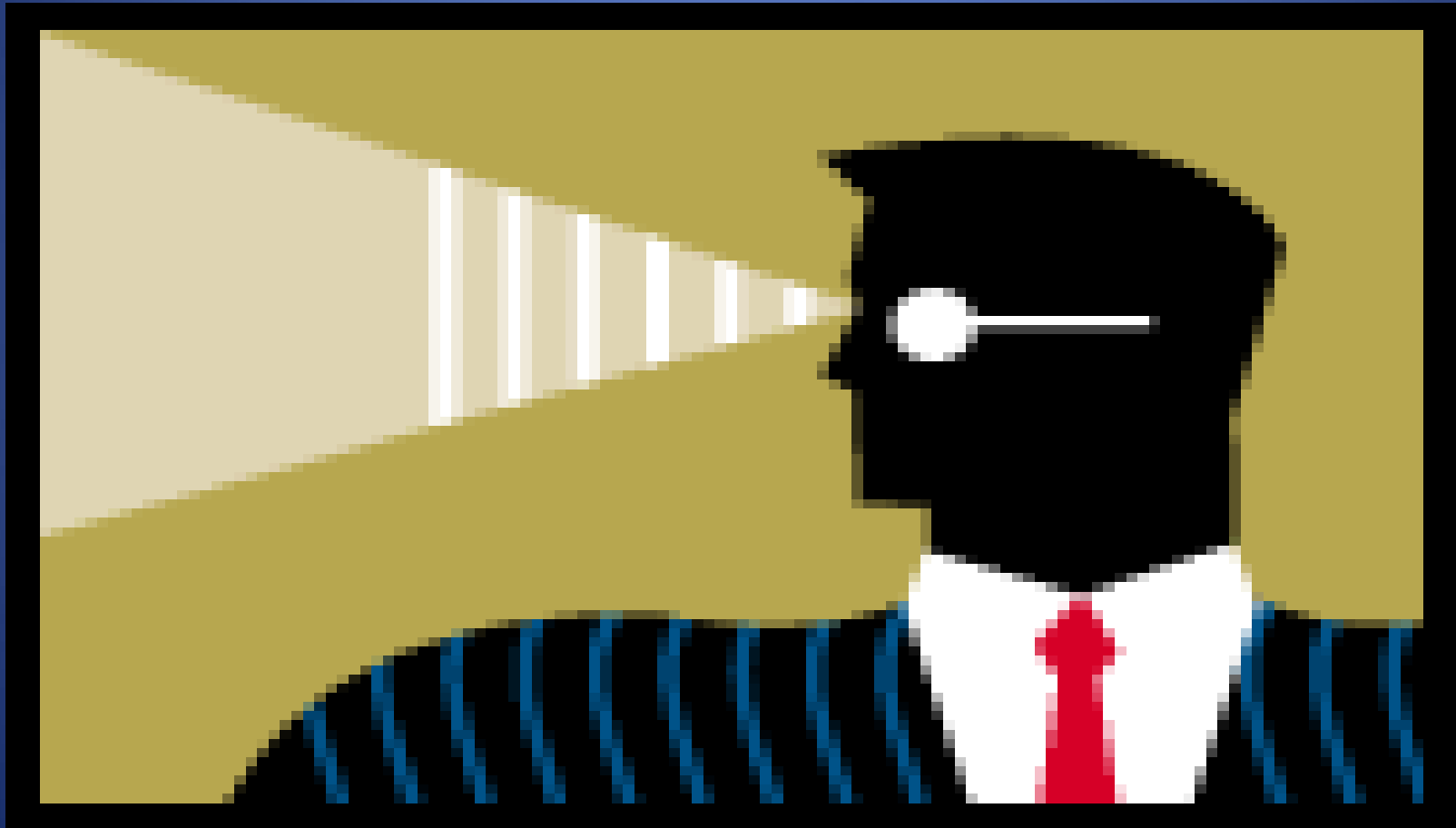


- Safety
- Effectiveness
- Patient-centeredness
- Timeliness
- Efficiency
- Equity

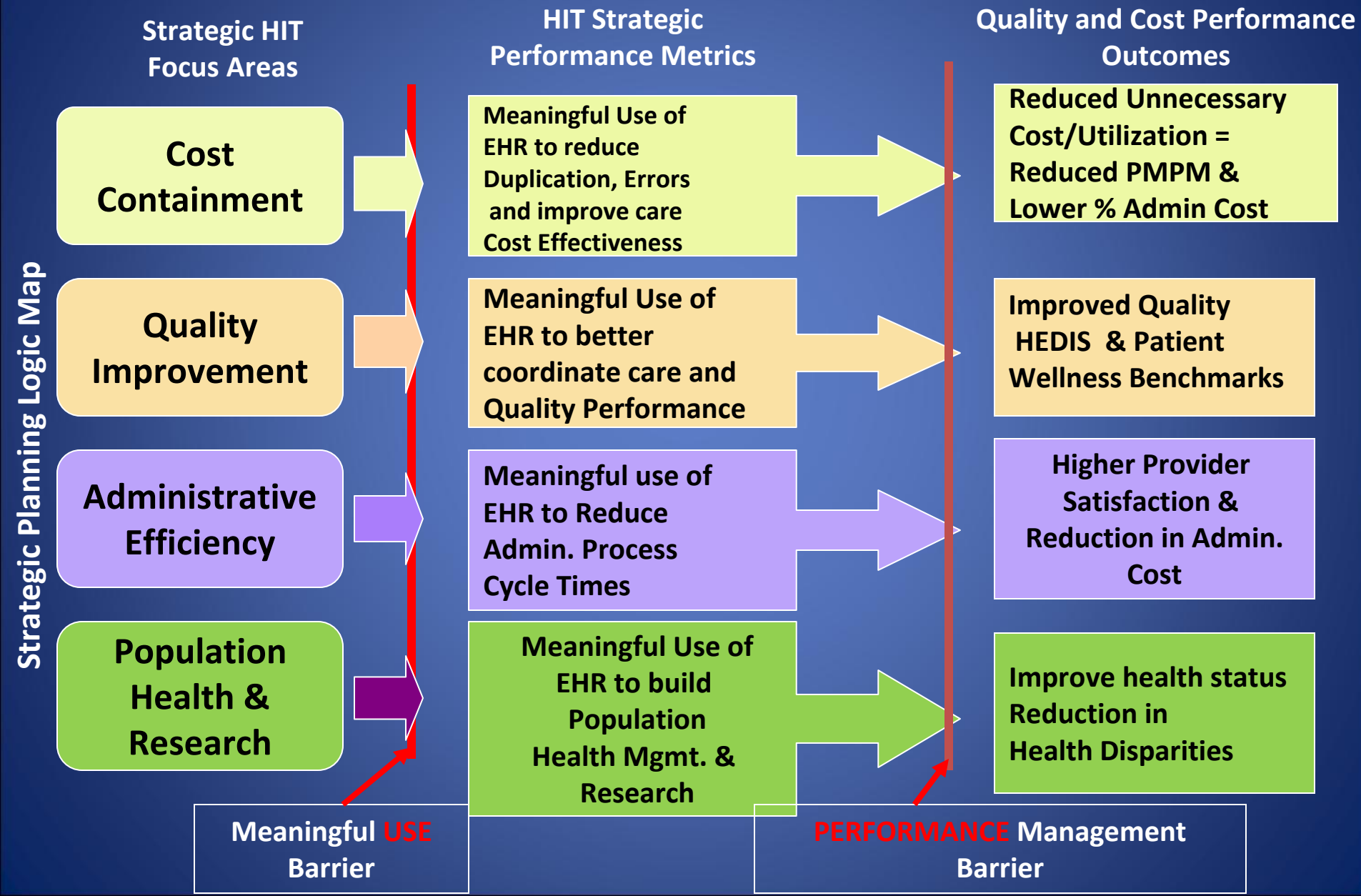
Essential Elements of The Patient Experience Transformed Healthcare System



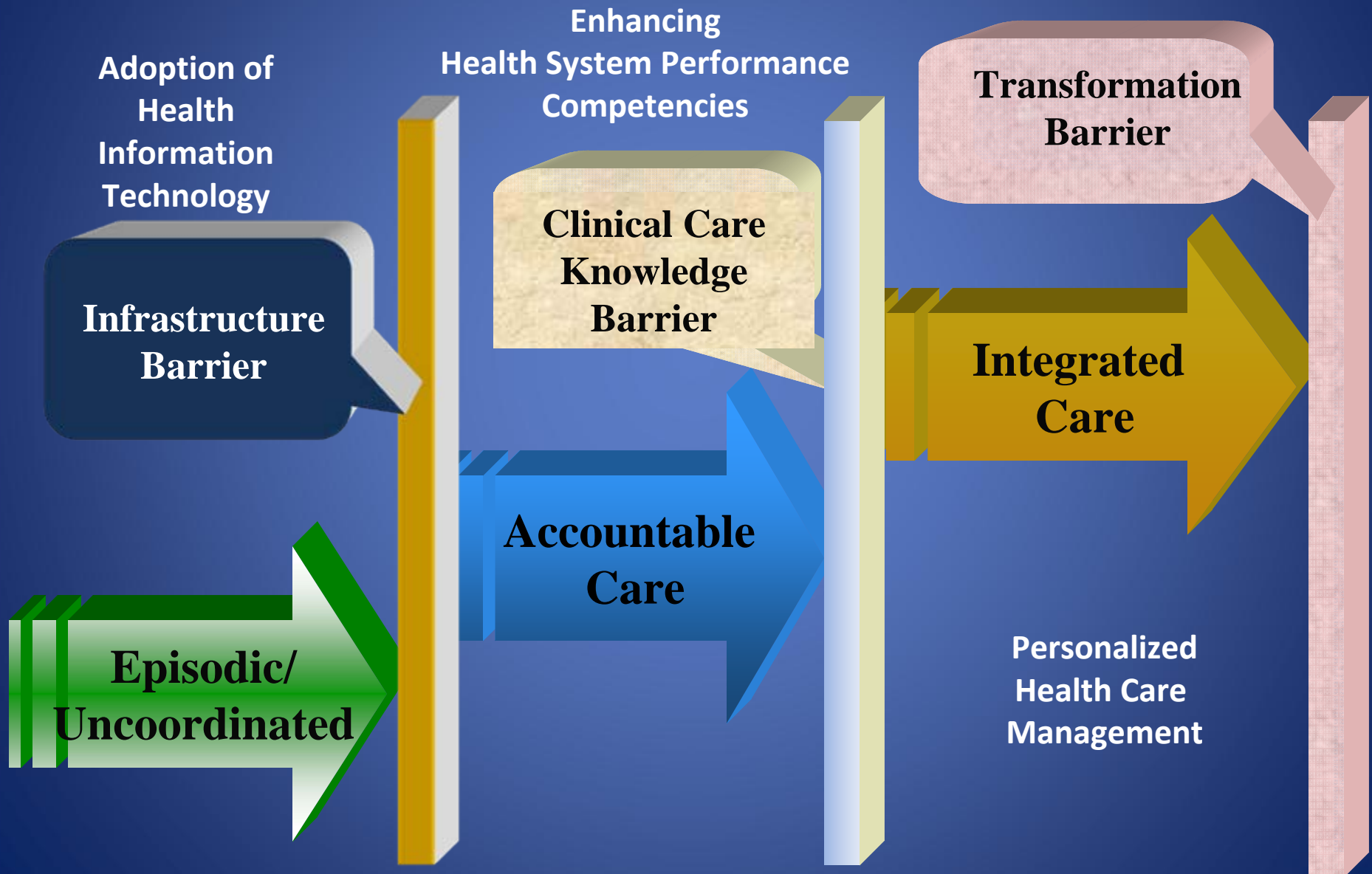
The CMS Vision of Leveraging Meaningful Use of HIT



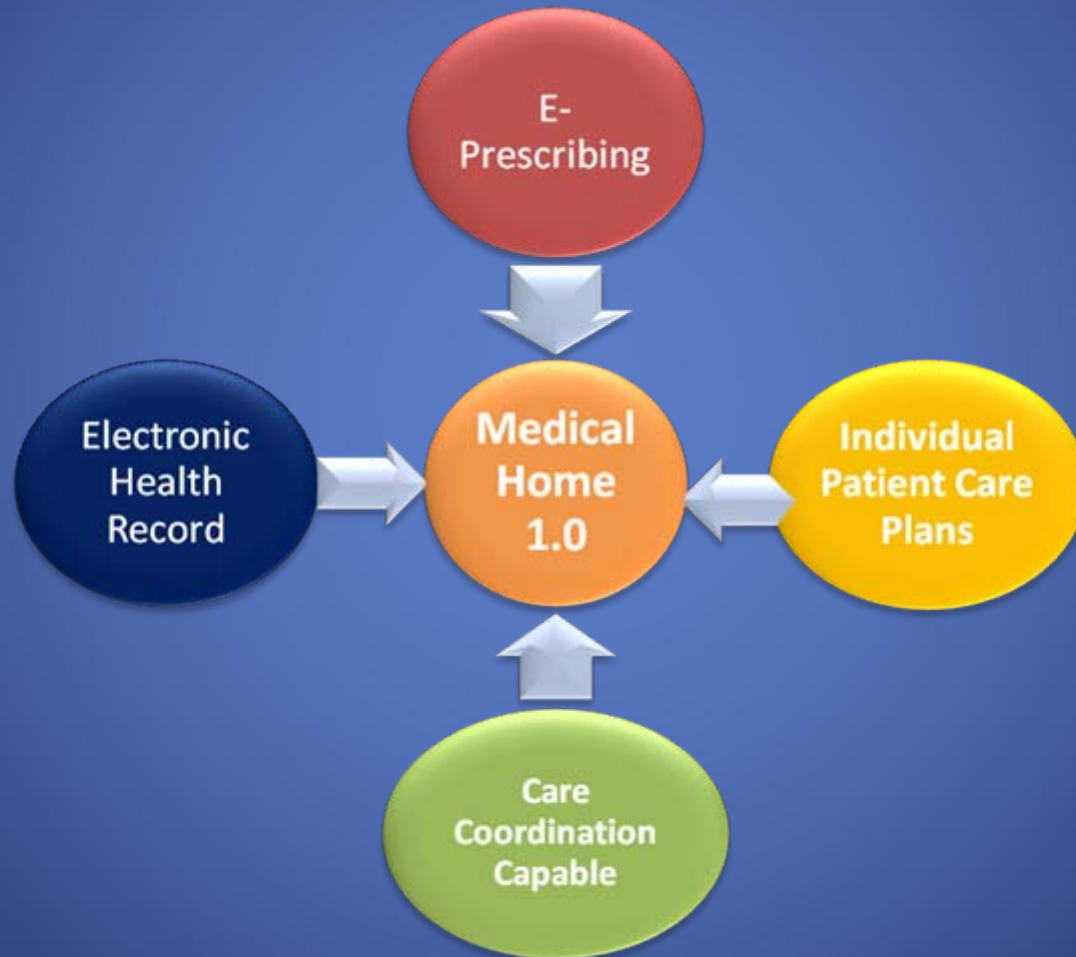
A Strategic System Approach to Healthcare Delivery Transformation



Health Care Delivery System Transformation



Medical Home 1.0



Medical Home 2.0



Medical Home 3.0



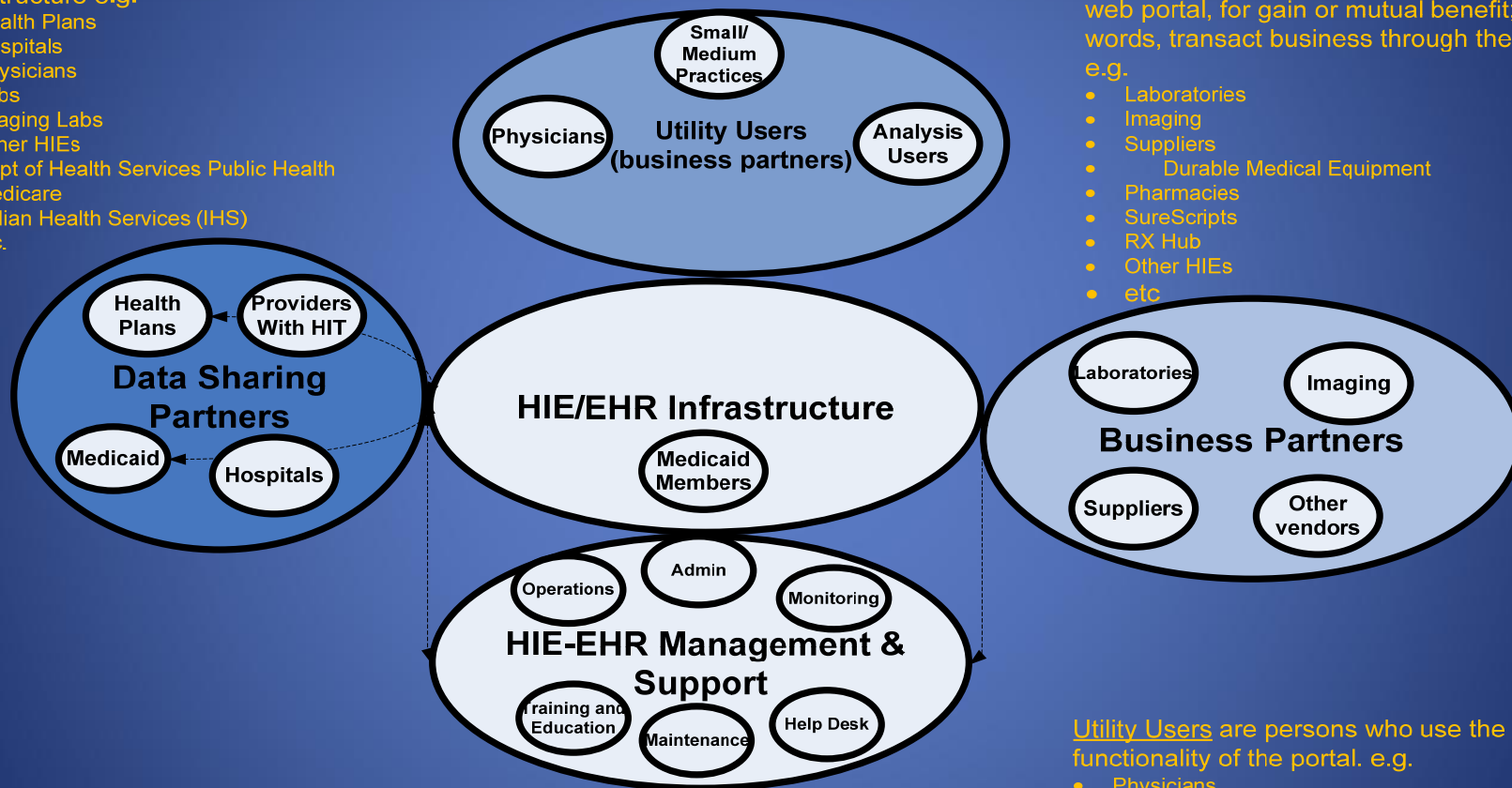
The Relationships Development for Meaningful Use of Health Information Exchange and EHR

Data Partners are organizations that share or exchange data through the HIE-EHR Infrastructure e.g.

- Health Plans
- Hospitals
- Physicians
- Labs
- Imaging Labs
- Other HIEs
- Dept of Health Services Public Health
- Medicare
- Indian Health Services (IHS)
- etc.

Business Partners are organizations that expose web content and applications through the Utility web portal, for gain or mutual benefit; in other words, transact business through the Utility. e.g.

- Laboratories
- Imaging
- Suppliers
- Durable Medical Equipment
- Pharmacies
- SureScripts
- RX Hub
- Other HIEs
- etc



Utility Users are persons who use the functionality of the portal. e.g.

- Physicians
- Small/medium Practices
- Analysis users (TBD)
- Emergency Depts
- Dept of Public Safety
- Department of Health Services
- etc

Administrative and management users use the portal to access administrative and management applications supported by the portal.

Health Care System Transformation Maturity

Initial Level of Health System Transformation Maturity



- Episodic Health Care
 - Sick care focus
 - Uncoordinated care
 - High Use of Emergency Care
 - Multiple clinical records
 - Fragmentation of care
- Lack integrated care networks
- Lack quality & cost performance transparency
- Poorly Coordinate Chronic Care Management

Managed Performance Level of Health System Transformation Maturity



- Transparent Cost and Quality Performance
 - Results oriented
 - Access and coverage
- Accountable Provider Networks Designed Around the patient
- Focus on care management and preventive care
 - Primary Care Medical Home
 - Utilization management
 - Medical Management

Optimize Care Level of Health System Transformation Maturity



- Patient Care Centered
 - Patient centered Health Care
 - Productive and informed interactions between Family and Provider
 - Cost and Quality Transparency
 - Accessible Health Care Choices
- Aligned Incentives for wellness
- Integrated networks with community resources wrap around
- Aligned reimbursement/cost Rapid deployment of best practices
- Patient and provider interaction
 - Aligned care management
 - E-health capable
 - E-Learning resources

Return on Investment from HIT

Wide Spread Adoption of Electronic Health Information
(EHI) Technologies for Better Outcomes , Lower Cost , Improve
Population Health

Improving Health Care Quality,
Cost Performance, Population Health

ROI of EHI at Point of Care:

- Improved Patient Safety
- Reduced Complications Rates
- Reduced Cost per Patient Episode of Care
- Enhanced cost & quality performance accountability
- Improved Quality Performance
- Improve Community Health Surveillance



Better
Outcomes

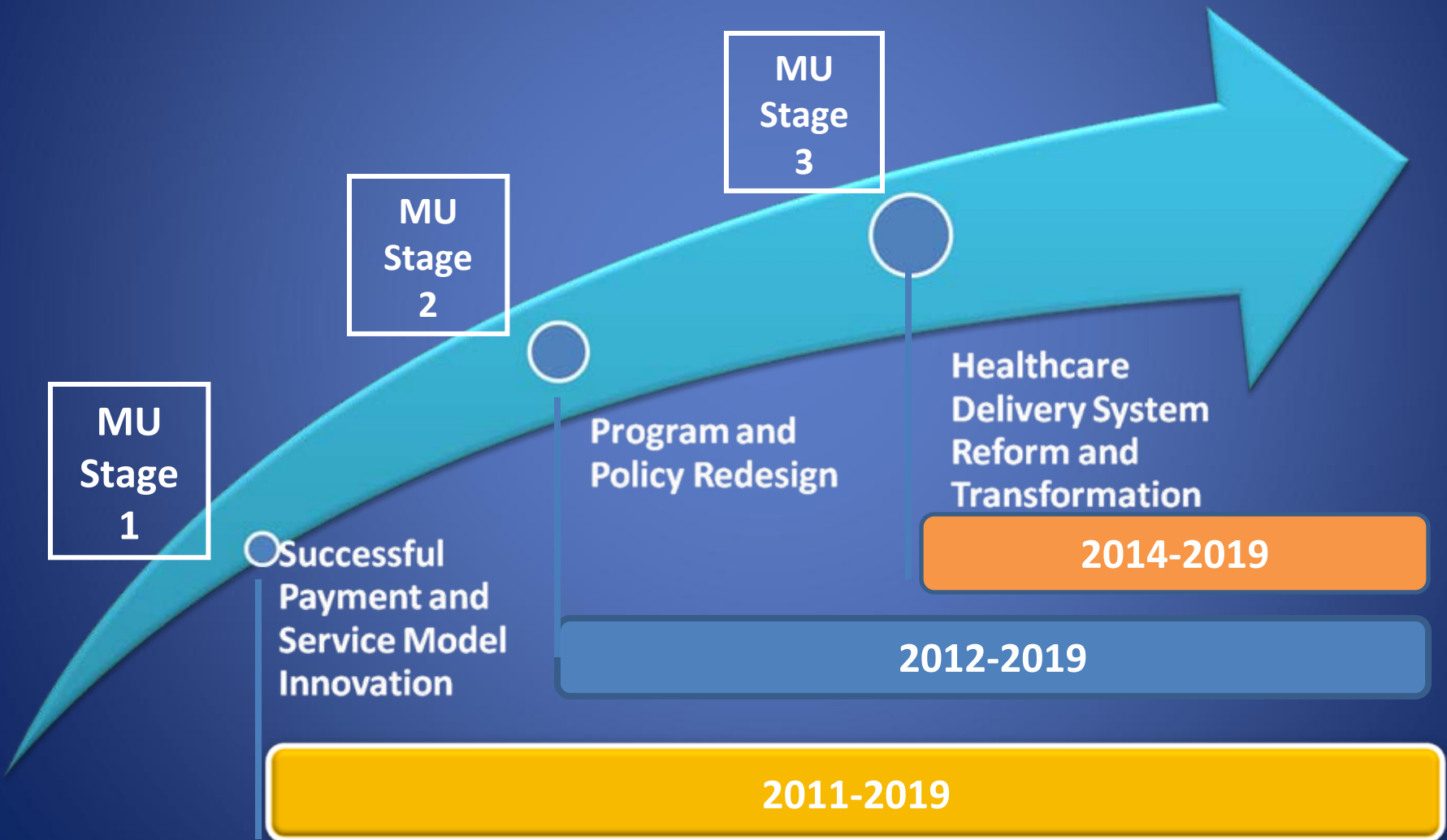


Lower
Costs



Population
Health

Timeline for Delivery System Reform and Transformation 2011-2019



Questions?

