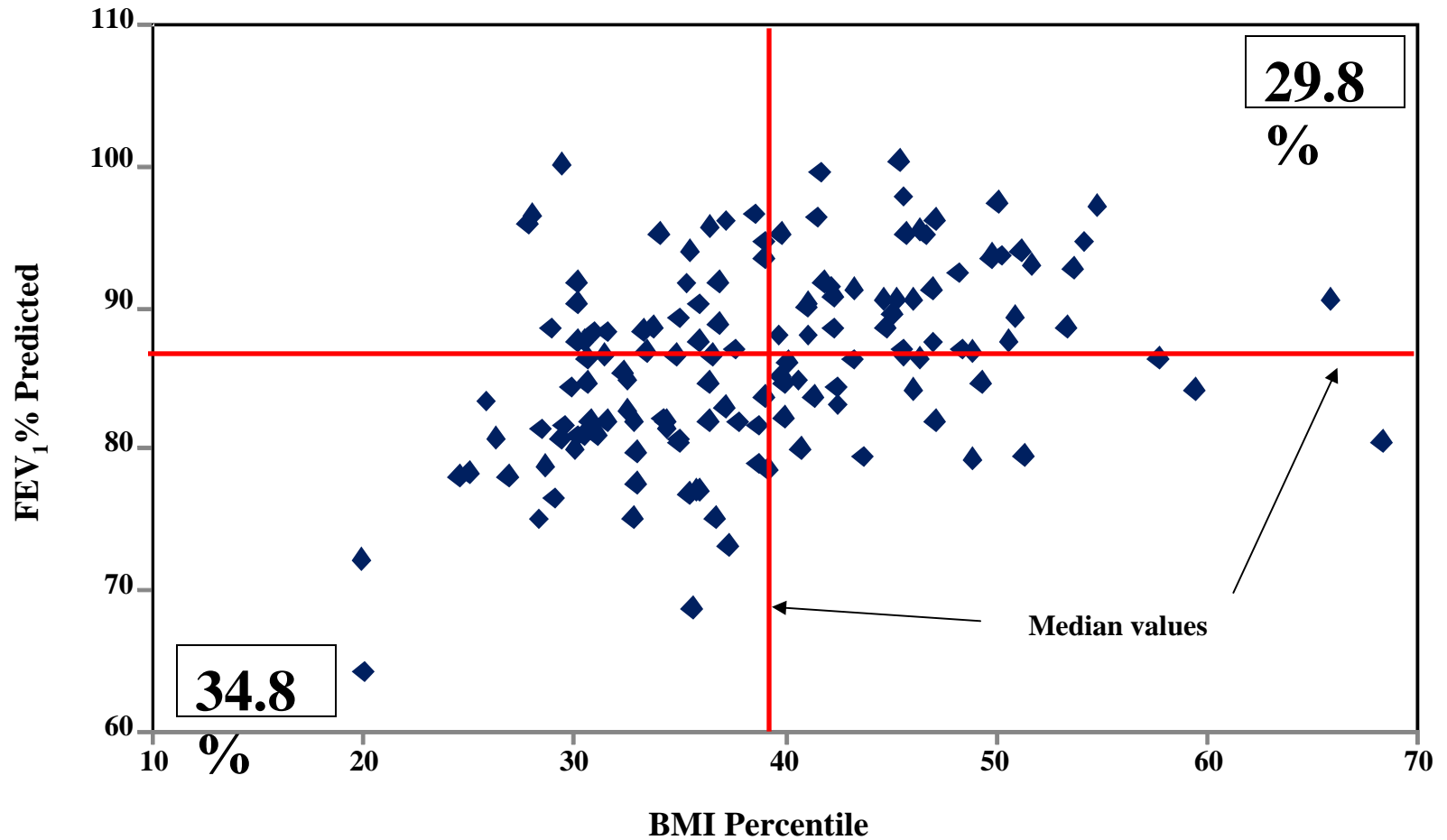
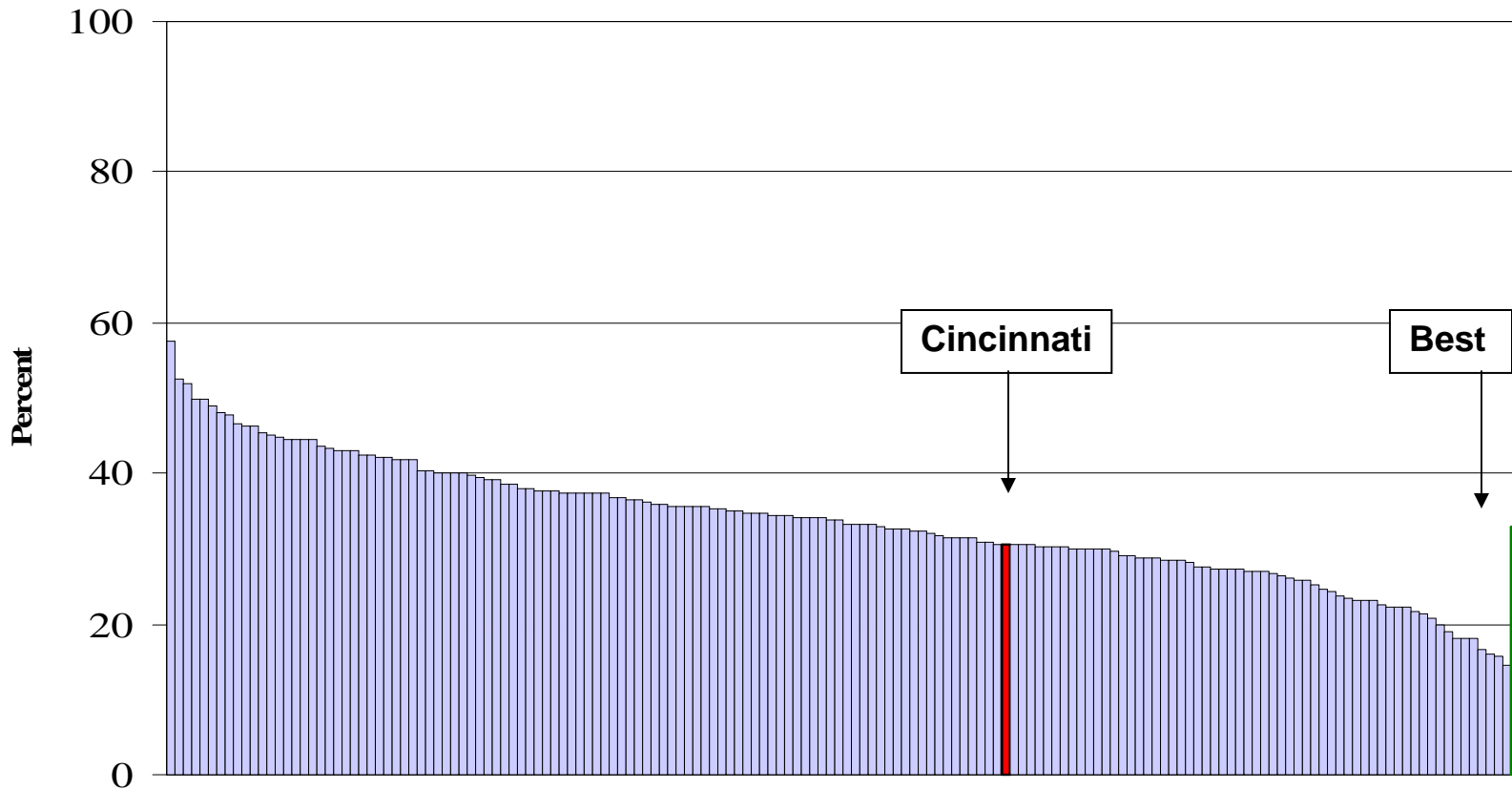


Variation in CF Outcomes - 1999



Patients with Cystic Fibrosis in Nutritional Failure (2002)



Being the Best at Getting Better

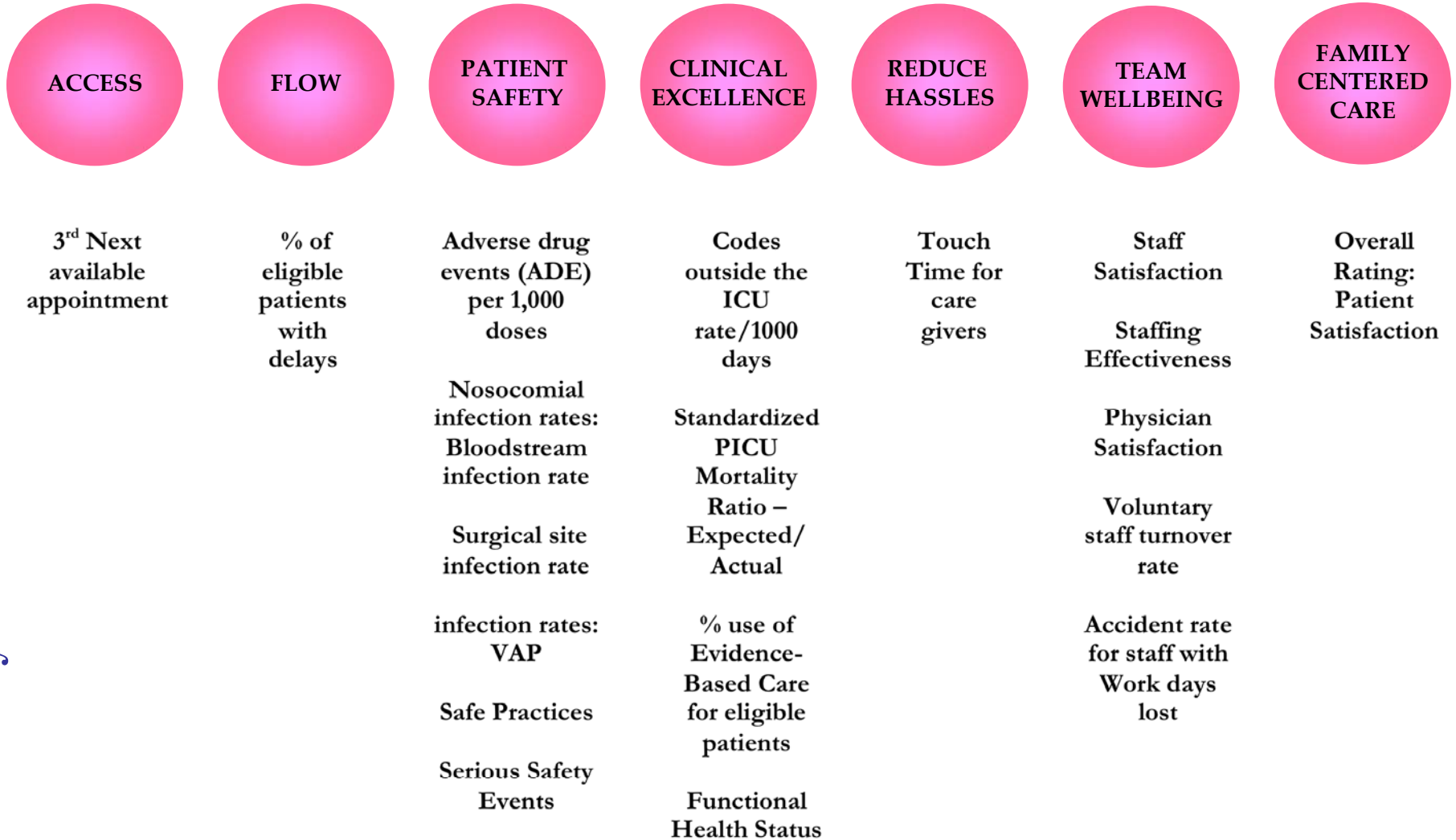
- Focus on the outcomes
- Integration and alignment
- Theory of knowledge, Building a learning system
- Respecting the science
- Capacity and capability
- Transparency and Trust
- Learning from other industries
- Prediction and management
- Executing with a sense of urgency



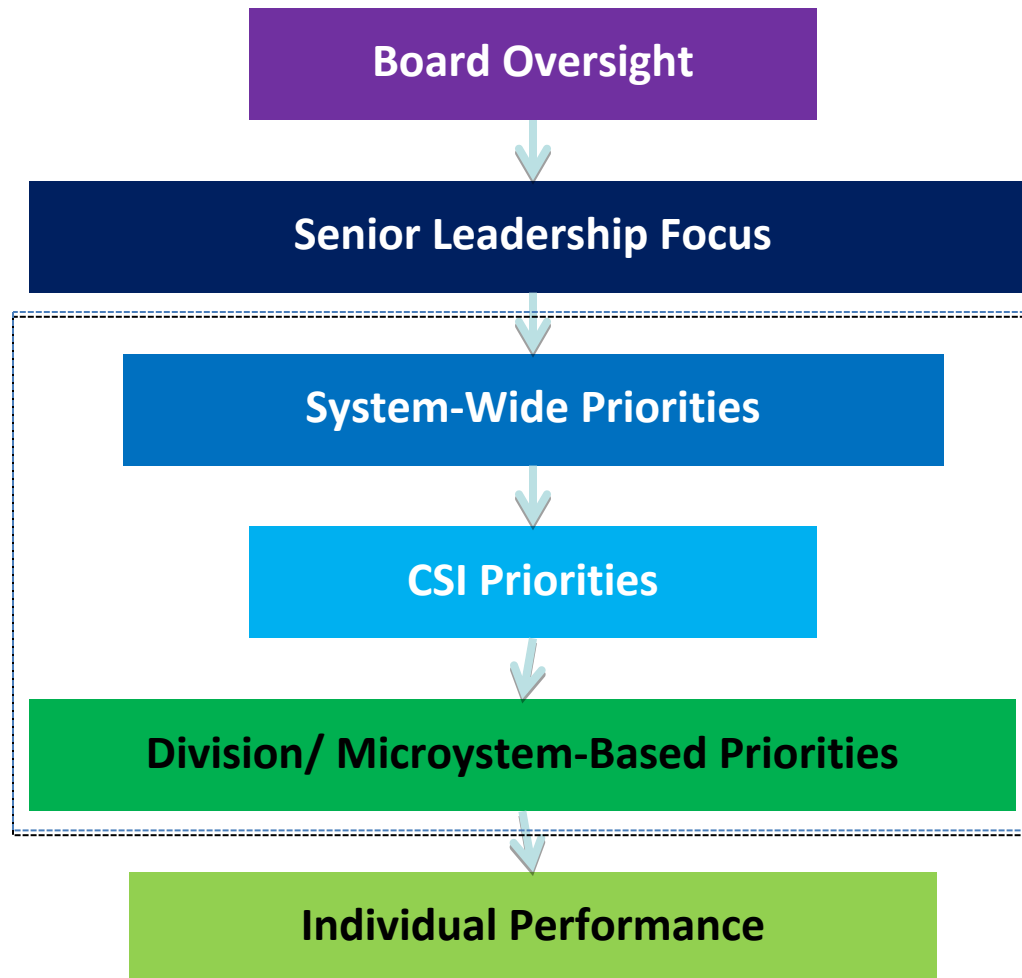
Health Care Delivery System Transformation

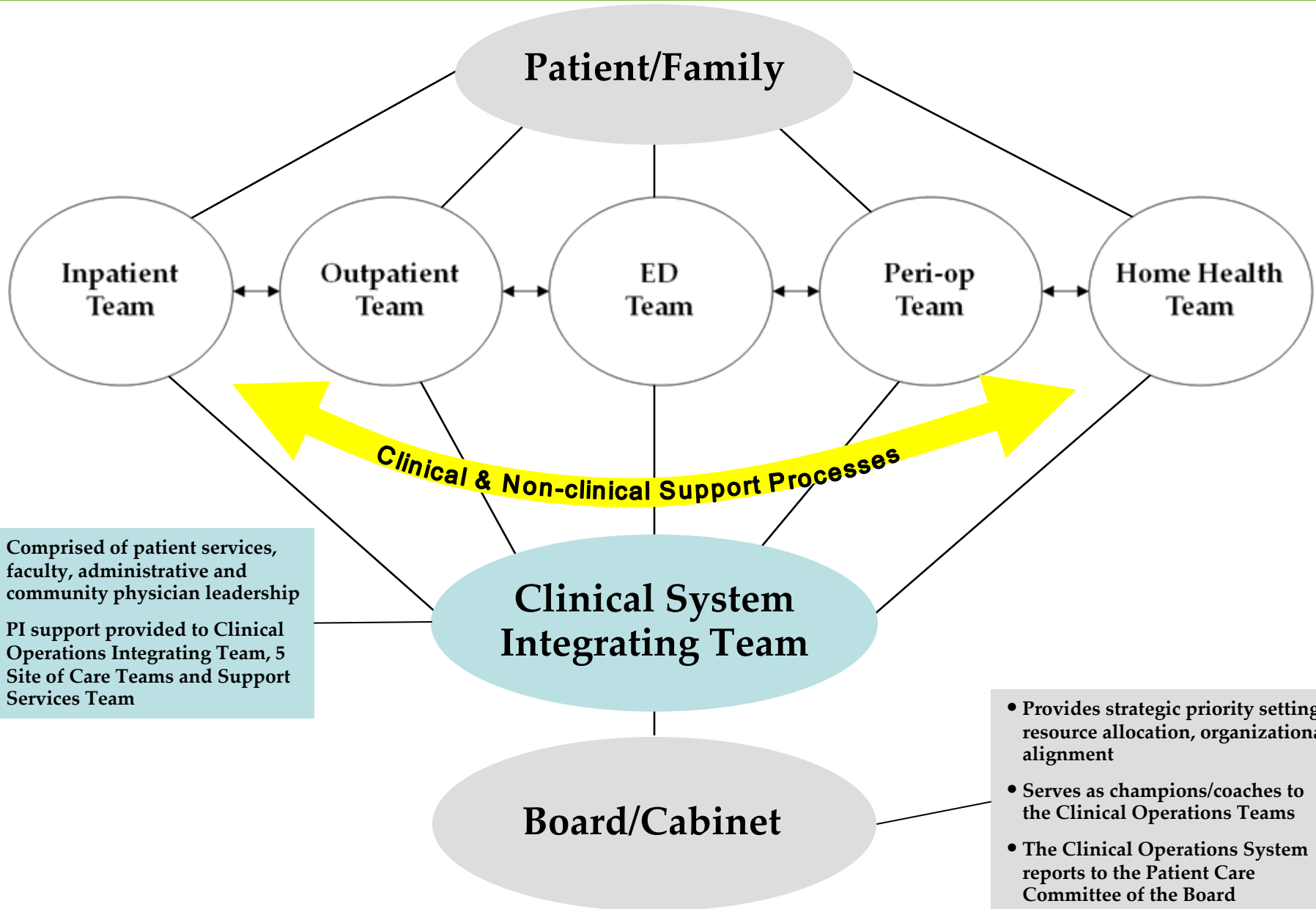
Strategic Improvement Priorities and System Level Measures

System Level Measures



Organizing For Transformation





Being the Best at Getting Better

- Focus on the outcomes
- Integration and alignment
- Theory of knowledge, Building a learning system
- Respecting the science
- Capacity and capability
- Transparency and Trust
- Learning from other industries
- Prediction and management
- Executing with a sense of urgency

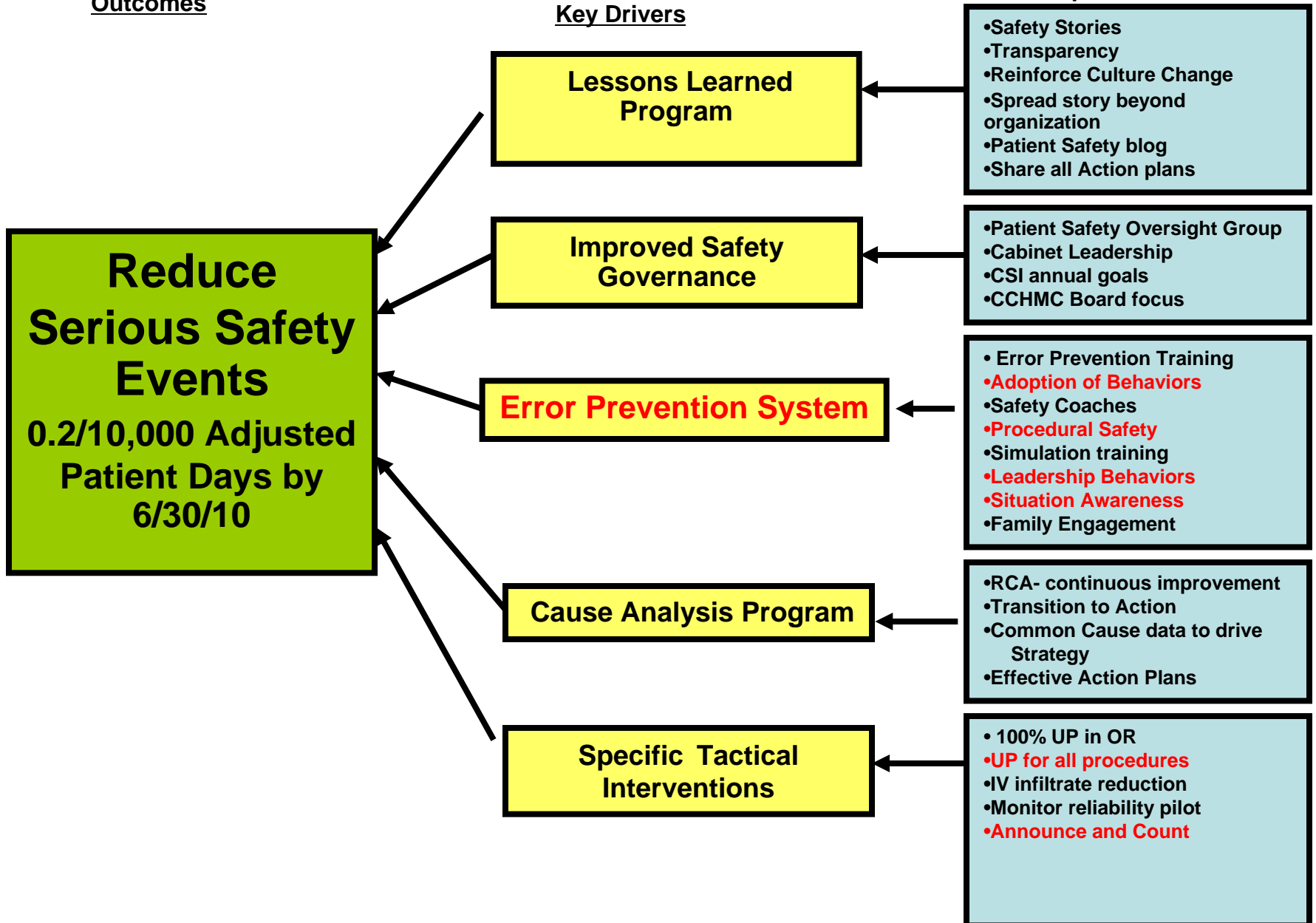


Serious Safety Event Reduction Key Driver Analysis

Intervention/Change Concepts

Outcomes

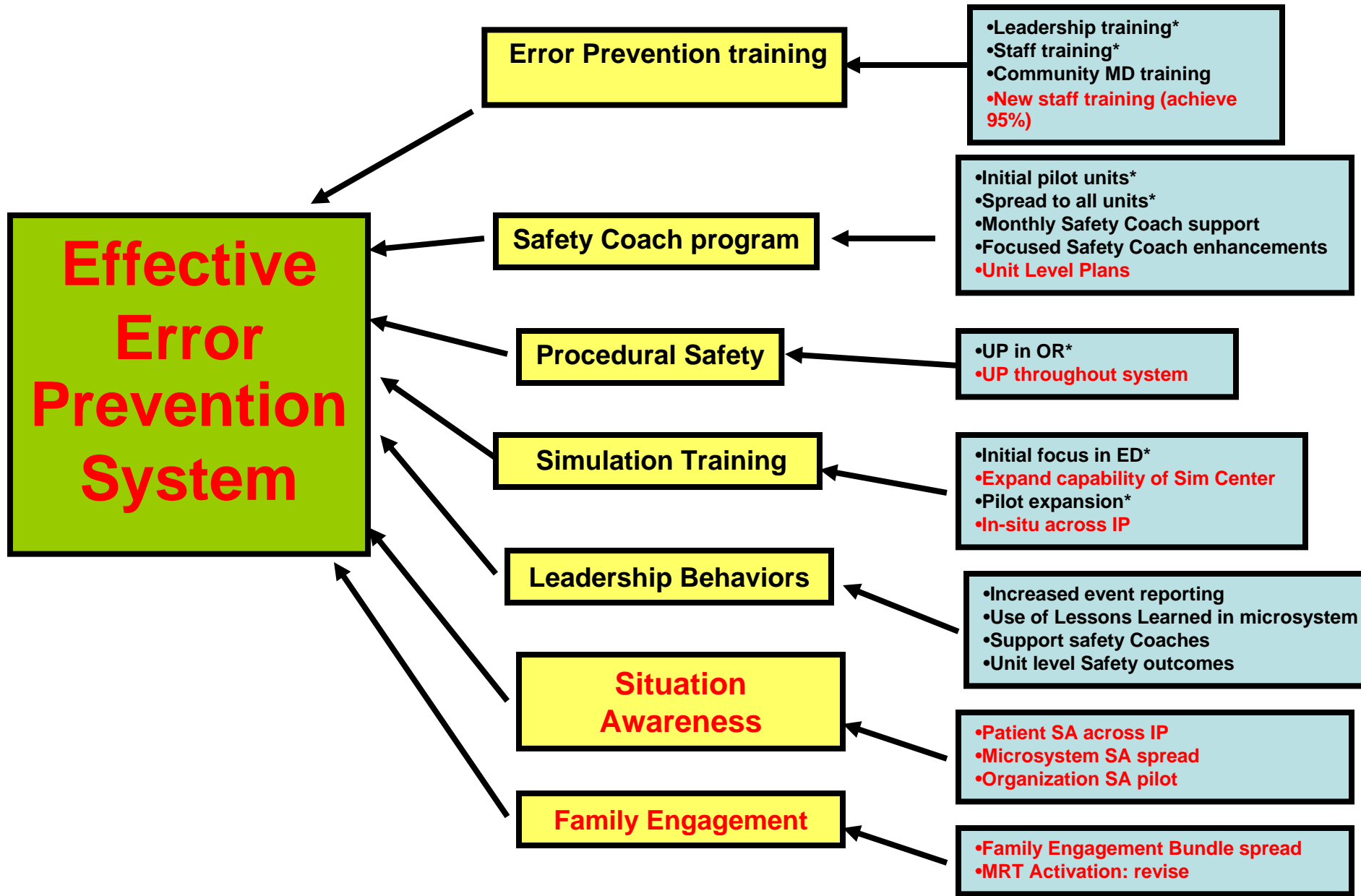
Key Drivers



Outcome

Key Drivers

Interventions



**Effective
Error
Prevention
System**

Error Prevention training

Safety Coach program

Procedural Safety

Simulation Training

Leadership Behaviors

Situation Awareness

Family Engagement

•Leadership training*
•Staff training*
•Community MD training
•New staff training (achieve 95%)

•Initial pilot units*
•Spread to all units*
•Monthly Safety Coach support
•Focused Safety Coach enhancements
•Unit Level Plans

•UP in OR*
•UP throughout system

•Initial focus in ED*
•Expand capability of Sim Center
•Pilot expansion*
•In-situ across IP

•Increased event reporting
•Use of Lessons Learned in microsystem
•Support safety Coaches
•Unit level Safety outcomes

•Patient SA across IP
•Microsystem SA spread
•Organization SA pilot

•Family Engagement Bundle spread
•MRT Activation: revise

Being the Best at Getting Better

- Focus on the outcomes
- Integration and alignment
- Theory of knowledge, Building a learning system
- Respecting the science
- Capacity and capability
- Transparency and Trust
- Learning from other industries
- Prediction and management
- Executing with a sense of urgency



IHI Execution Framework



Strategic Execution

Capability vs Capacity

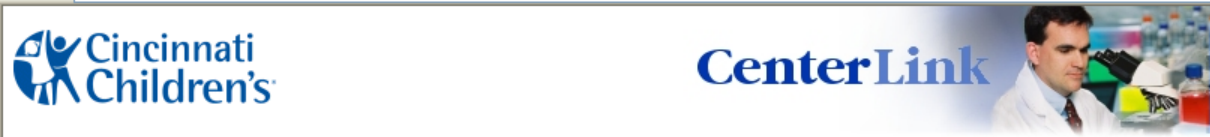
- Improvement Capability
 - An **individual's** knowledge & skill to to design improvement initiatives to achieve measurable results & the ability to execute (i.e. develop, test, measure & implement changes) improvement efforts & sustain results.
- Improvement Capacity
 - An **organization's resources** which enable it to initiate & sustain a transformation effort. This includes capable individuals but also structures, processes, infrastructure including quality experts & measurement experts.



Being the Best at Getting Better

- Focus on the outcomes
- Integration and alignment
- Theory of knowledge, Building a learning system
- Respecting the science
- Capacity and capability
- Transparency and Trust
- Learning from other industries
- Prediction and management
- Executing with a sense of urgency





H1N1 Influenza Update

What You Need to Know About H1N1 Influenza

The Centers for Disease Control answers your questions and debunks the myths about the H1N1 swine-associated influenza virus. [Full Story](#)

More Links

- ◆ [ODH Novel Influenza A H1N1 Testing Overview -- Effective June 1](#)

[Archives](#)

Daily Update

↓	Title	Posted
●	Get Discounted Tickets to Macy's Music Festival	6/6/2009
●	Webinar Focuses on Patient Safety	6/5/2009
●	You're Invited to Shared Governance Skill Building Day	6/4/2009
●	Orthopaedic Surgery Presents Visiting Professor Laurel Blakemore, MD	6/3/2009
●	Epic Demo Day Will Show How Applications Work	6/3/2009
●	CCTST Inaugurates Grand Rounds Series With "Double	6/2/2009

CenterNews

Expert on Kangaroo Mother Care Visits RCNIC

Nils Bergman, MD, travels the globe advocating that infants do best when they're in skin-to-skin contact with Mom. [Full Story](#)



Cincinnati Children's Announces Formation of Cancer Institute

Aim is to integrate research and clinical care with institutional support to deliver better outcomes, experience and value for patients and their families. [Full Story](#)

Give Blood, Save Lives

Just 30 minutes of your time can mean the difference between life and death for someone in need. [Full Story](#)

More Links

- ◆ [Cincinnati Children's, UC, University Hospital Launch Cancer Consortium](#)
- ◆ [Child Life Celebrates 78th Anniversary](#)
- ◆ [Recycle Electronics Using e-GO](#)
- ◆ [Epic Update](#)

PATIENT SAFETY FIRST.

Patient Safety Tracker

73 days since our last serious safety event
[Learn More About Patient Safety](#)
[Please click here for details](#)

Patient Safety Lessons Learned

Home Care Nurse Helps Improve Patient's Safety with Safety Report

Lori Hartman, RN, Home Care, recently eased a parent's concerns and helped keep a patient safe in the transition from inpatient to outpatient care. [Full Story](#)

[Archives](#)

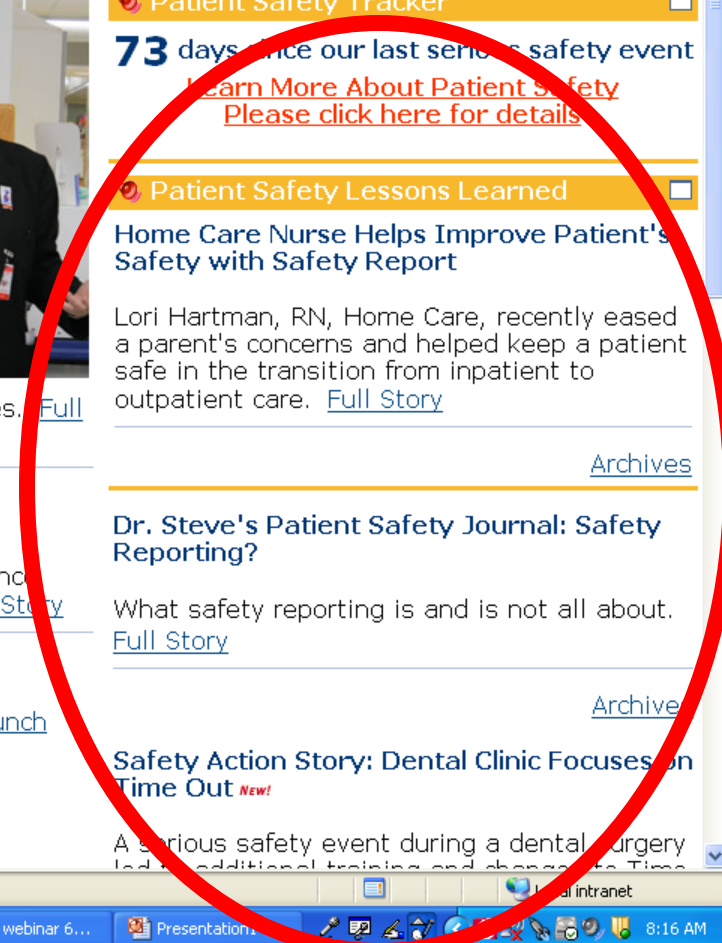
Dr. Steve's Patient Safety Journal: Safety Reporting?

What safety reporting is and is not all about. [Full Story](#)

[Archive](#)

Safety Action Story: Dental Clinic Focuses on Time Out *New!*

A serious safety event during a dental surgery led to additional training and changes to Time

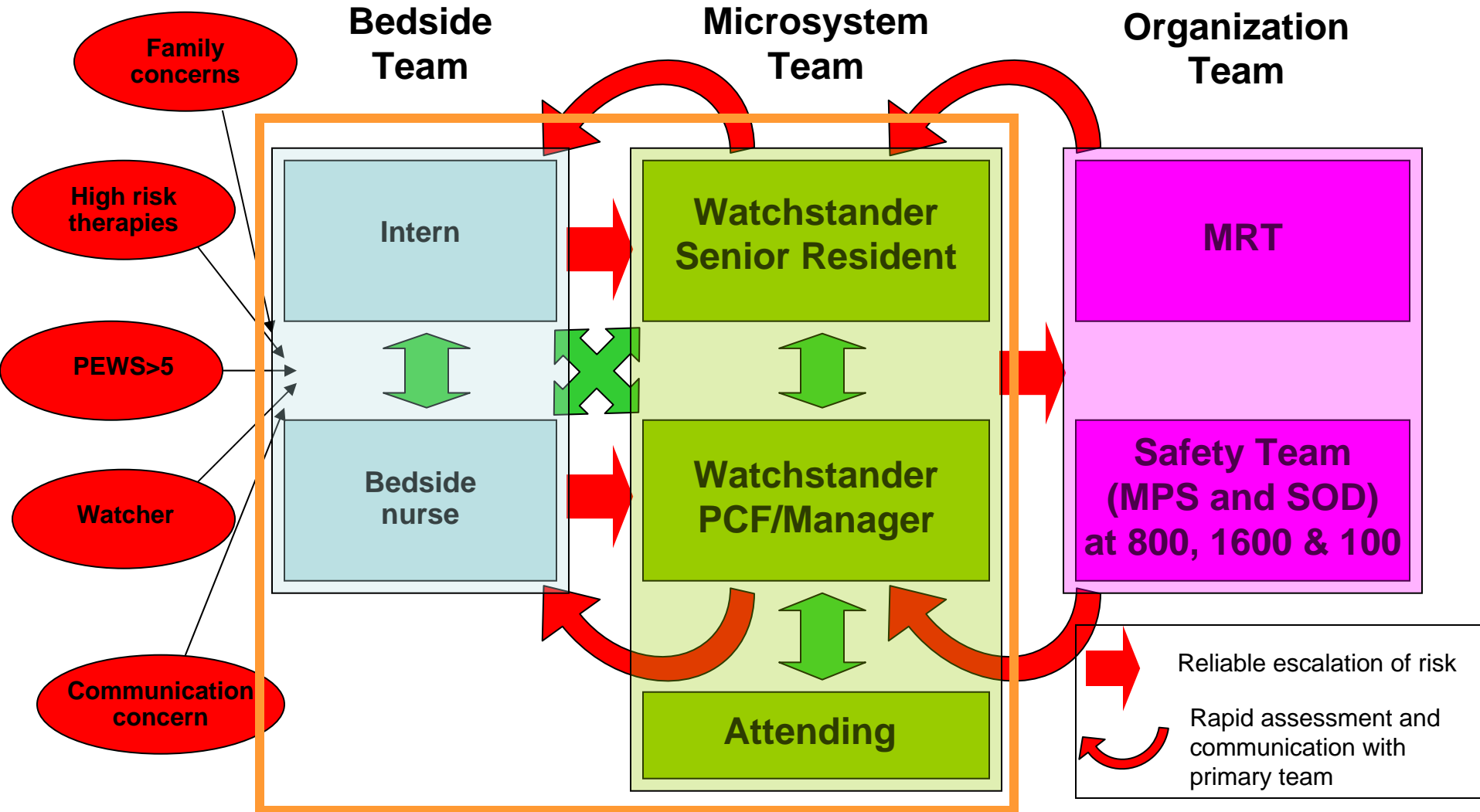


Being the Best at Getting Better

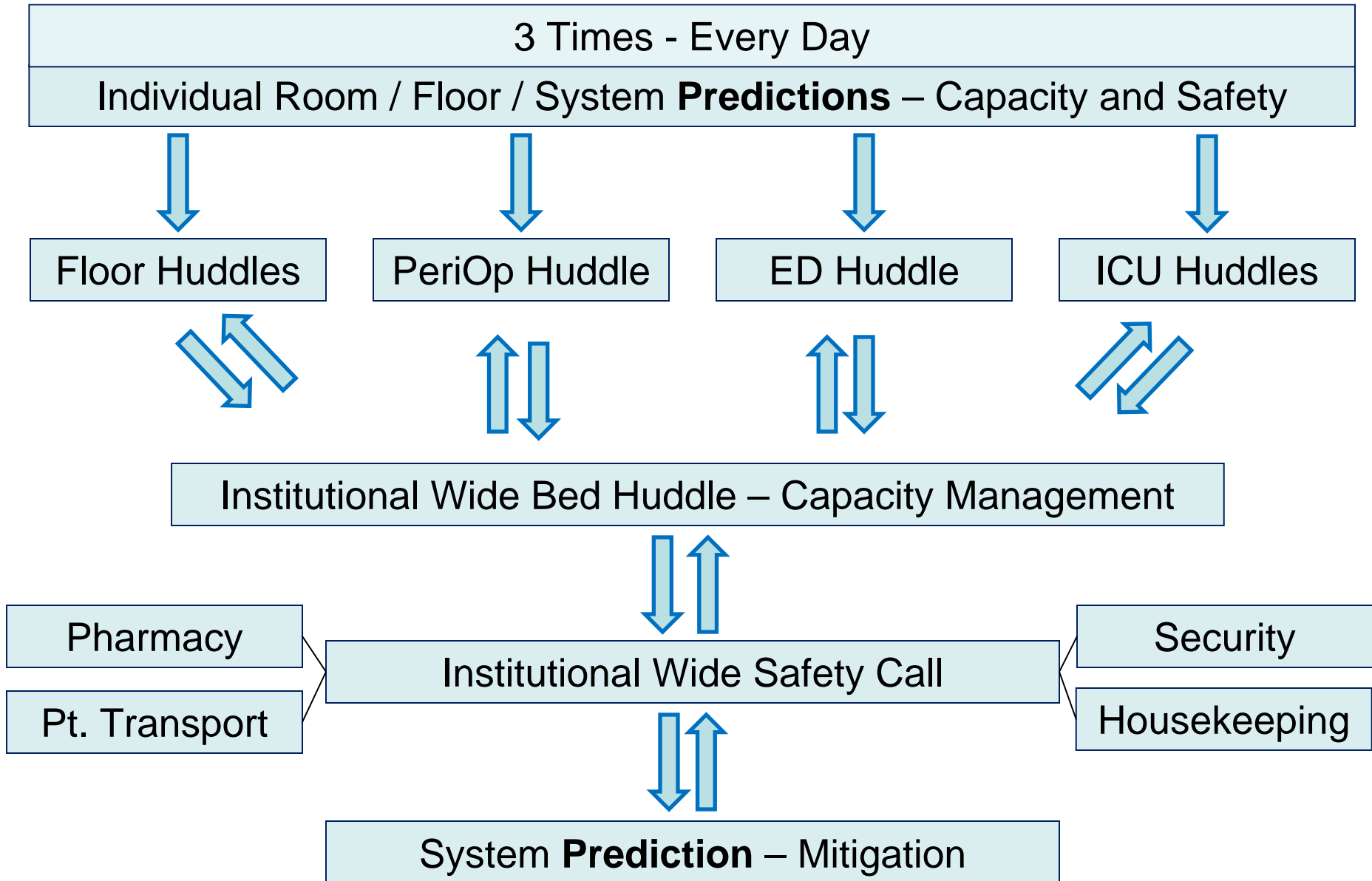
- Focus on the outcomes
- Integration and alignment
- Theory of knowledge, Building a learning system
- Respecting the science
- Capacity and capability
- Transparency and Trust
- Learning from other industries
- Prediction and management
- Executing with a sense of urgency



Situation Awareness Model



Hospital Wide System for Safety



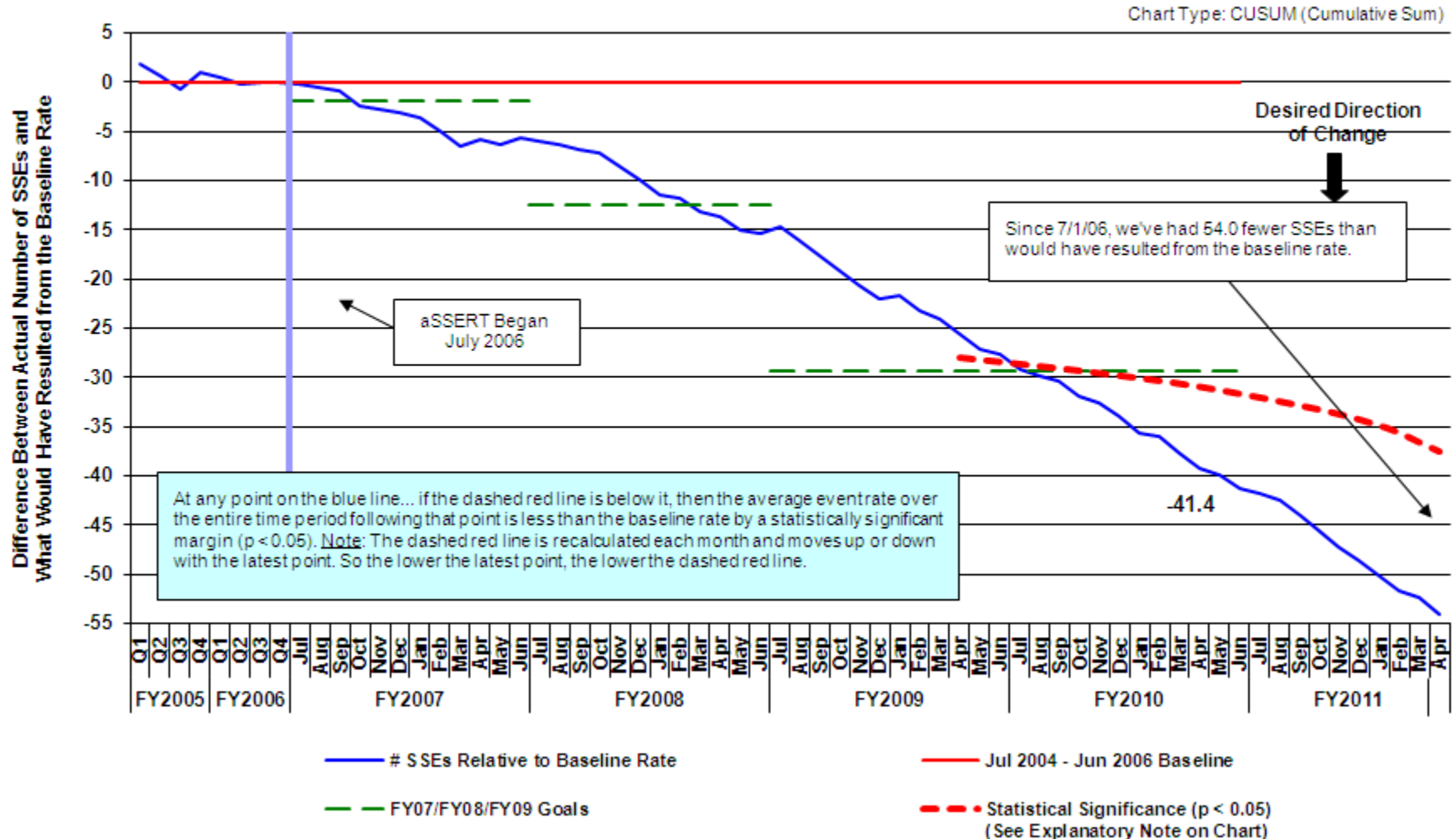
Being the Best at Getting Better

- Focus on the outcomes
- Integration and alignment
- Theory of knowledge, Building a learning system
- Respecting the science
- Capacity and capability
- Transparency and Trust
- Learning from other industries
- Prediction and management
- Executing with a sense of urgency



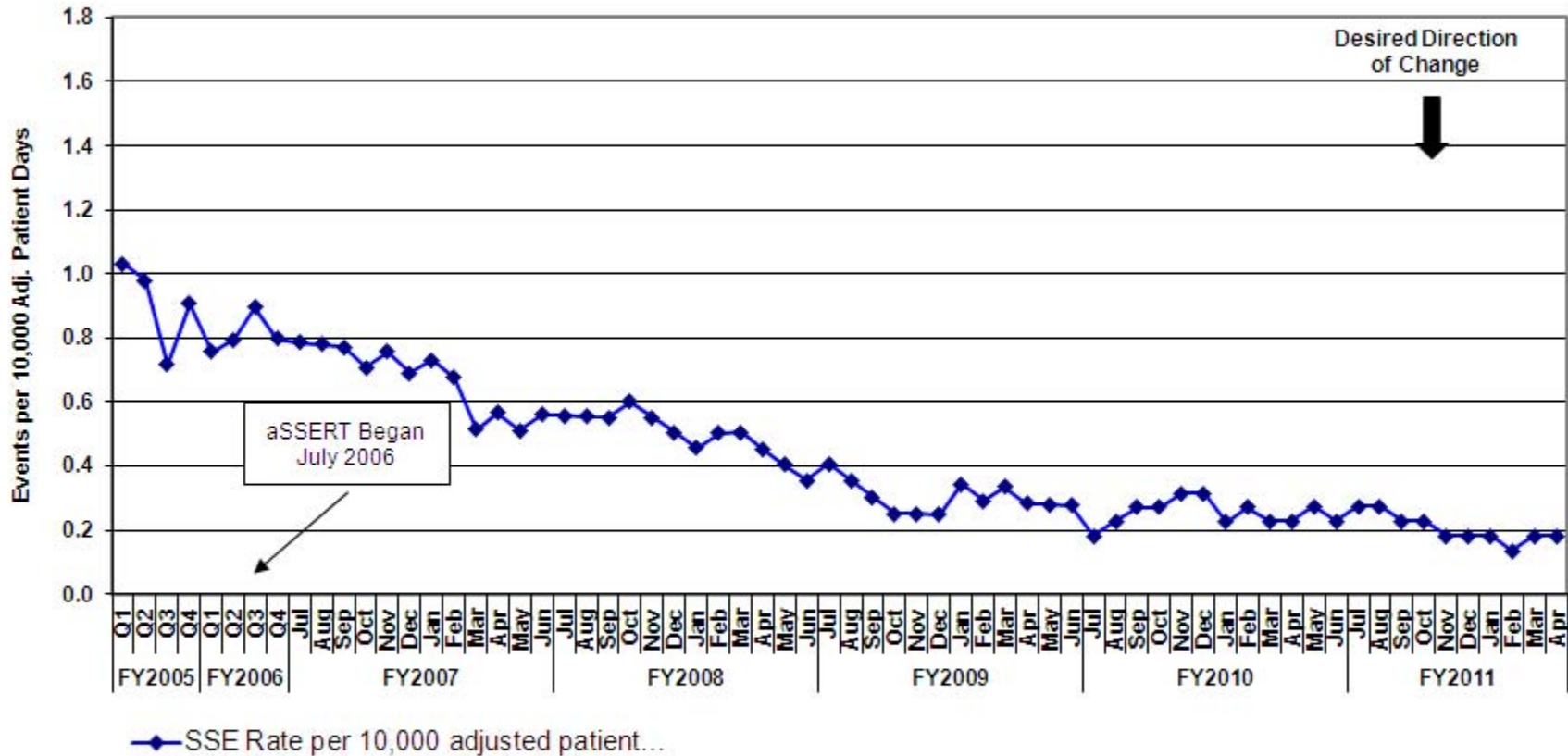


Serious Safety Events Total Number of SSEs in Comparison to Baseline Rate

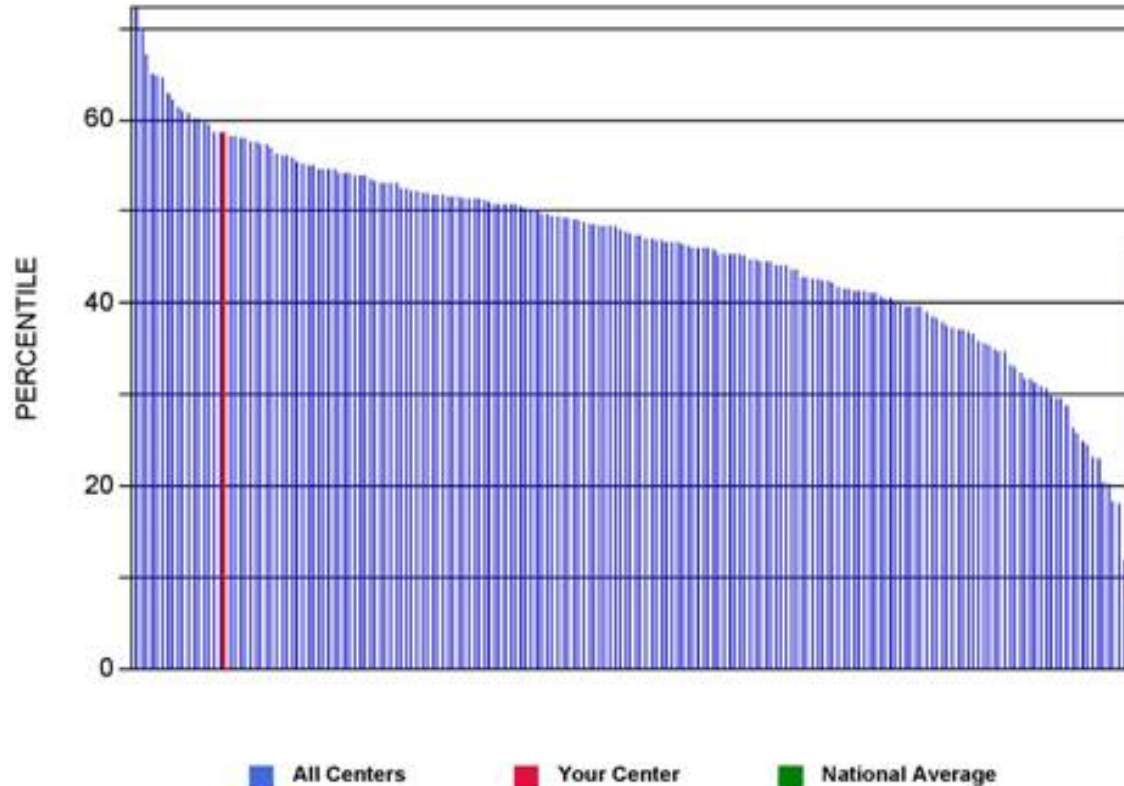




Serious Safety Events per 10,000 Adj. Patient Days Rolling 12-Month Average

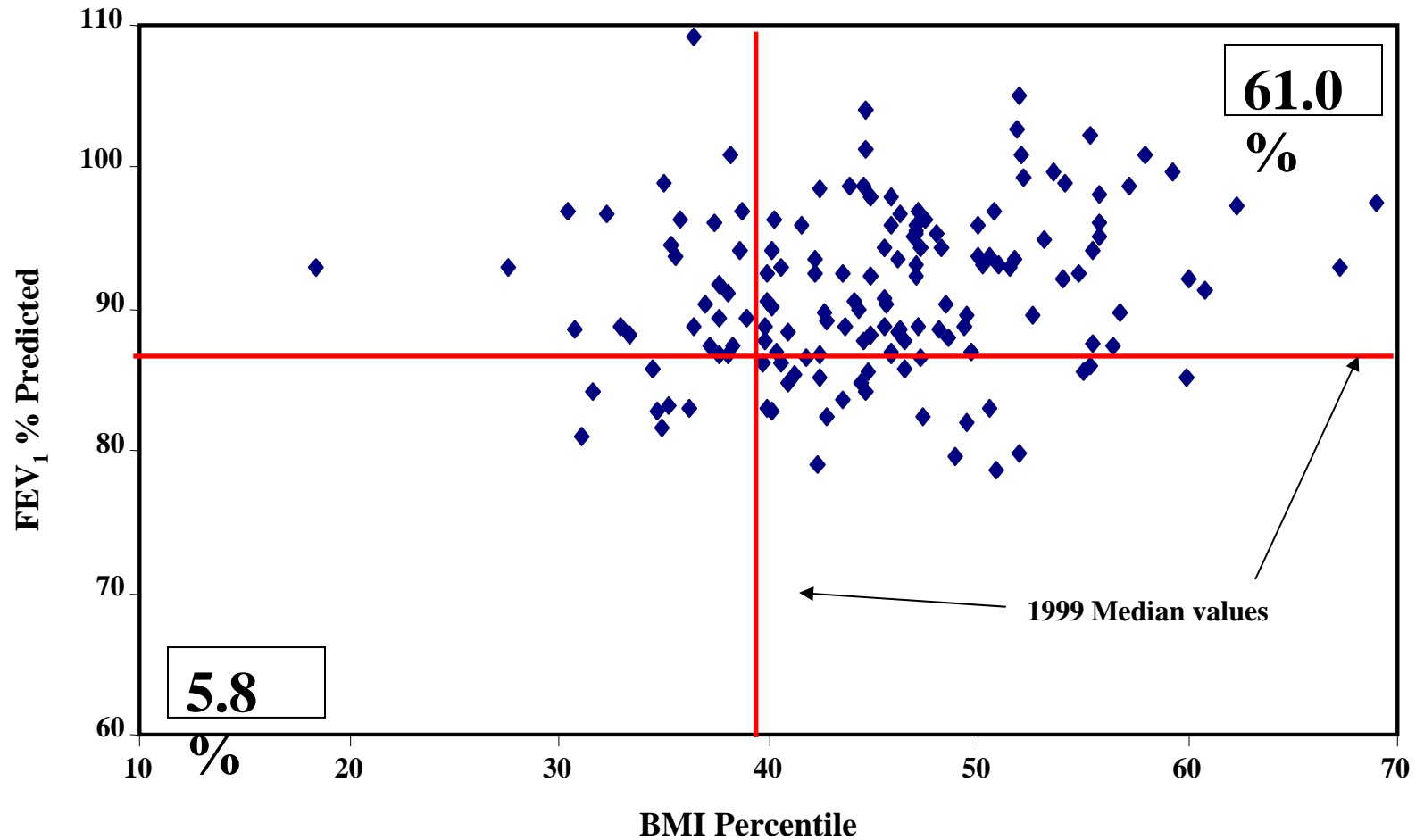


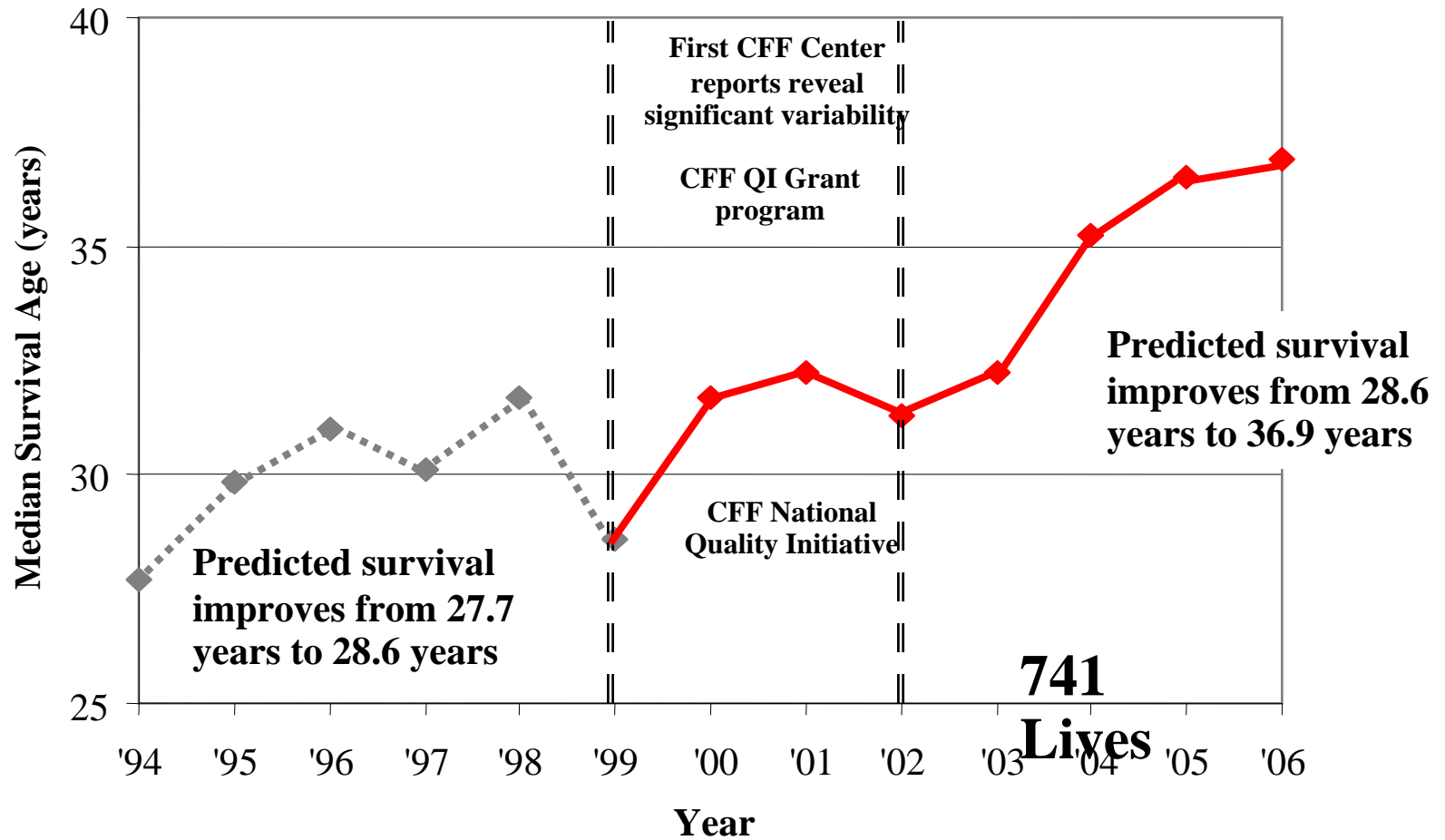
Median BMI Percentile for Patients 2 to 20 years for 2008



National average for current year is for reference only. Not all care centers may have entered all relevant data as of the date of this report. Centers with fewer than 10 qualifying patients are not represented on this report.

Variation in CF Outcomes - 2006

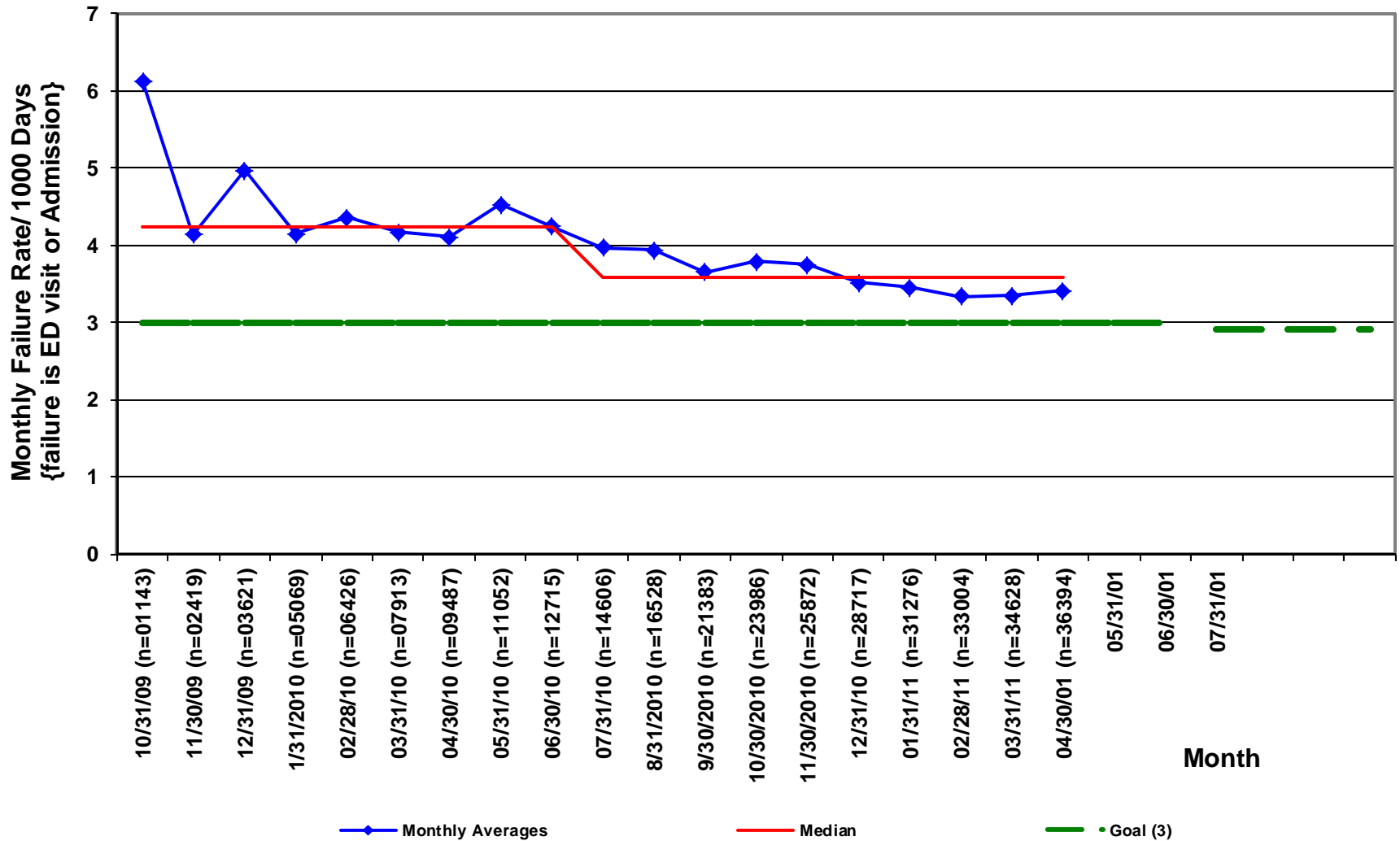




The Story of Darryl



Asthma In Medicaid Populations [Failure Rate / 1000 Days Cum] Intervened Enrolled Cohort Patients



Mean Time Between Utilization (ED Visit or Admission) for General Pediatrics Asthma Patients in Care Coordination Cohort 77 Patients

