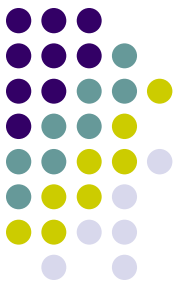


Building Community Resiliency: Ensuring Disaster Preparedness



Role of Hospitals During Public Health Emergencies

2nd National Emergency Management Summit
February 4, 2008
Washington, DC

Georges C. Benjamin, MD, FACP, FACEP (Emeritus)
Executive Director
American Public Health Association



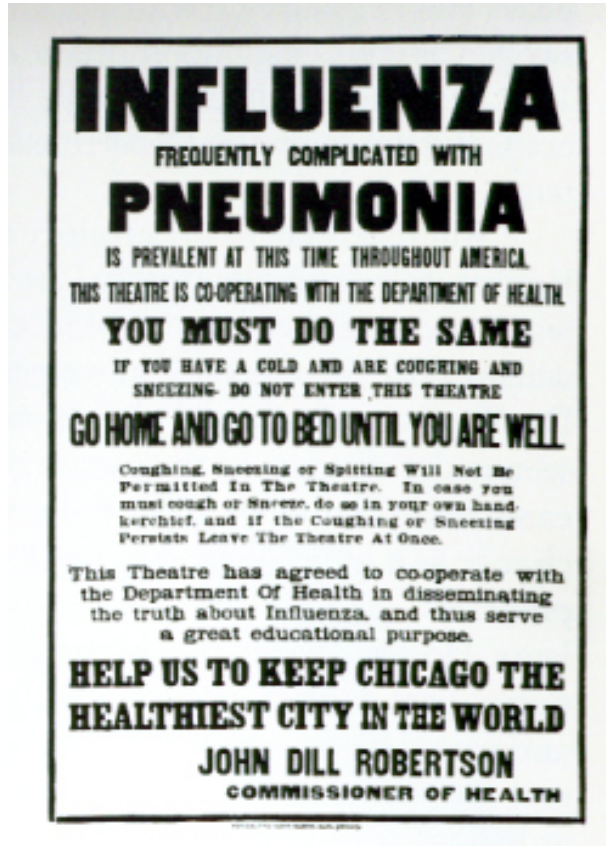
Disaster Defined

“A disaster is the result of a vast ecological breakdown between humans and their environment, a serious and sudden event (or slow, as in a drought) on such a scale that the stricken community needs extraordinary efforts to cope with it, often with outside help or international aid.” (from Noji, Gunn and Lechat)

**Disasters require a partnership between local, state and federal government.....
- and the community -**

Disasters Come In Many Forms:

What Nature Does To Us

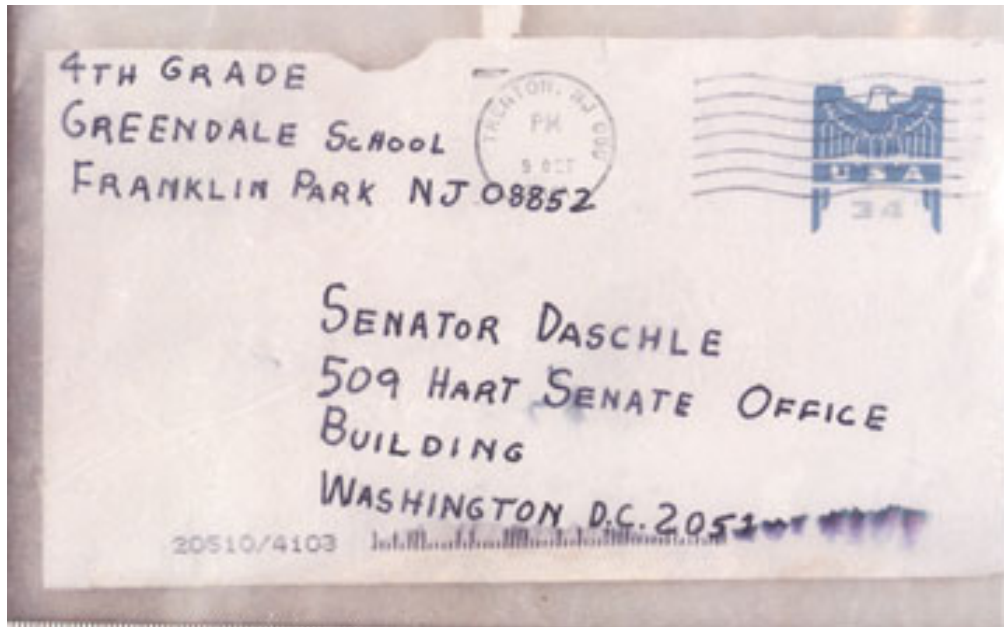


Influenza 1918



Tornados Midwest

Disasters Come In Many Forms: *What We Do To Each Other*

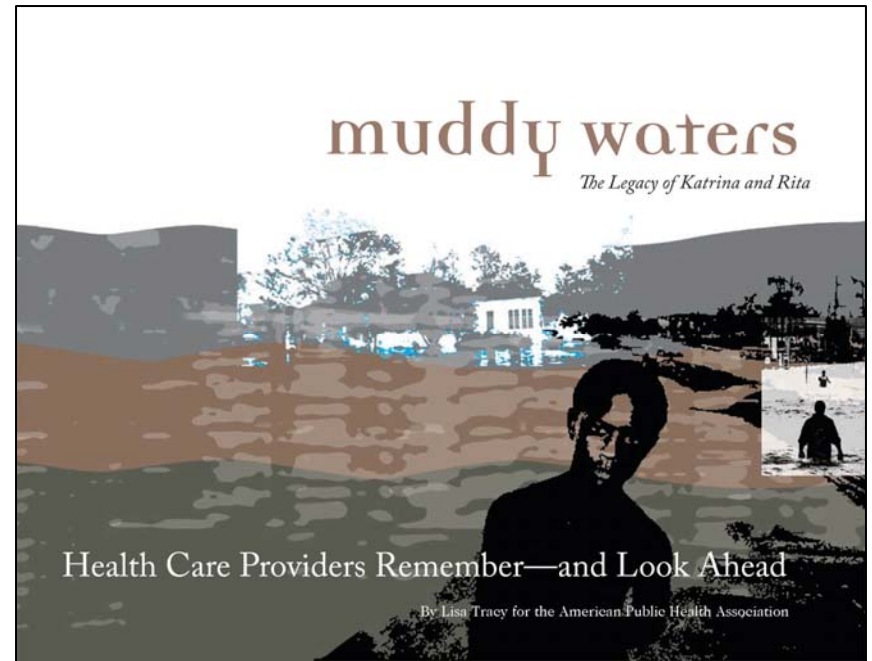


Terrorism



War Refugees

Disasters Come In Many Forms: *What We Don't Do*



Hurricane Katrina/Rita September 2005

Definition: Public Health Preparedness



“The capability of the public health and health care systems, communities, and individuals, to prevent, protect against, quickly respond to, and recover from health emergencies, especially those whose scope, timing, or unpredictability threatens to overwhelm routine capabilities.”

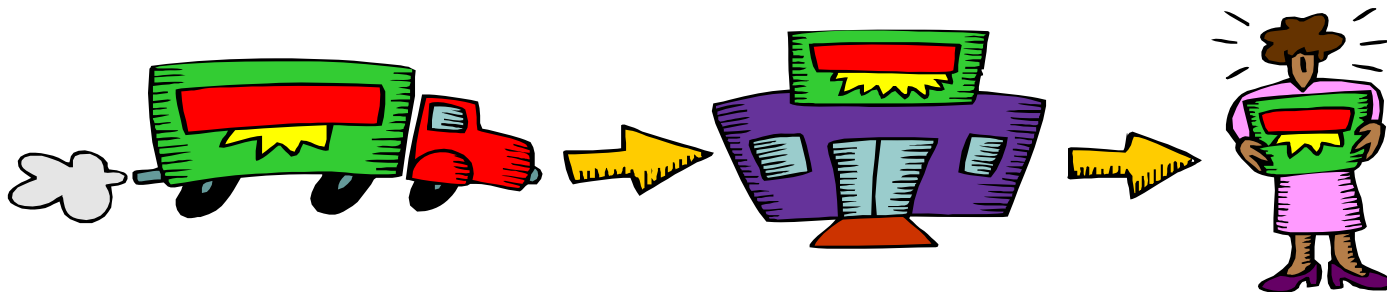
“RAND 2007”

Public Health Preparedness and Response



Goal: To go from chaos to controlled disorder

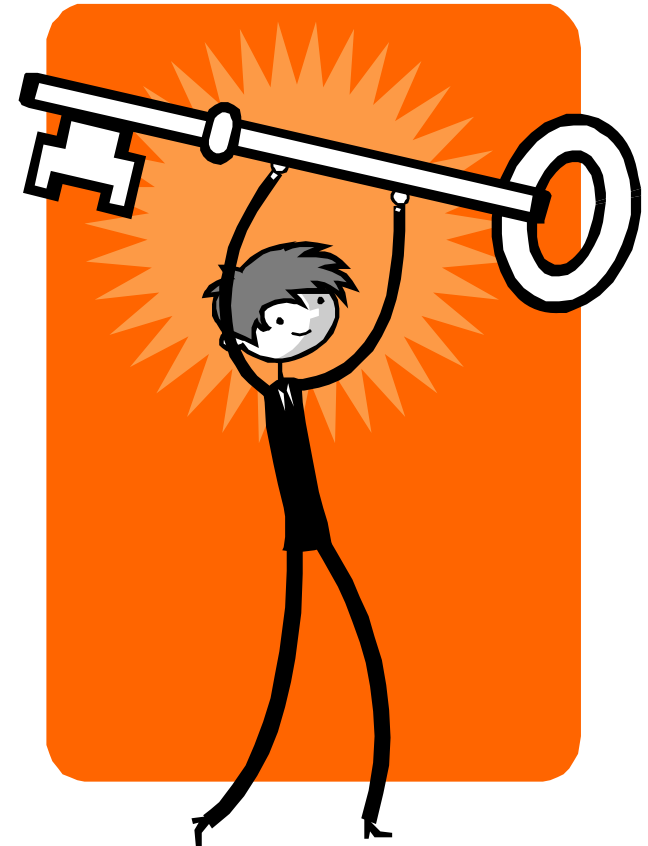
- Preparedness is a process not a point in time!
- Always ask - Prepared for what?
- Drills are one element to measure preparedness
- Can also use real life events to measure preparedness
- Imagine what can go wrong & anticipate
- Remember disasters are political events



Strategic Preparedness Goals To Ensure: Health Security

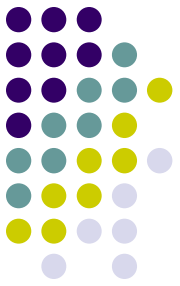


- **Limit death and suffering through proper preventive, curative, and supportive care**
- **Defend civil liberties by using least restrictive interventions to control spread of disease**
- **Preserve economic stability, managing impact on victims and hard-hit locales**
- **Discourage scapegoating and stigmatization**
- **Bolster ability of individuals and groups to rebound from traumatic events**



Building Community Resilience

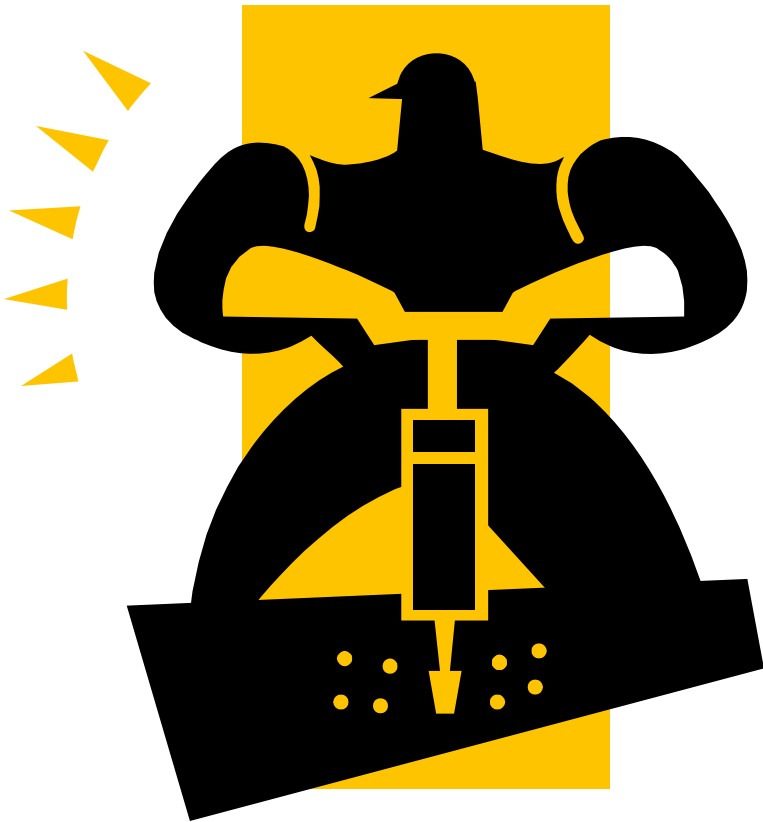
Goal of A Resilient Community



In a Disaster, a resilient community should be able to mitigate the risks to individuals, families, and the community as a whole from preventable, serious health threats....Hospitals have a role in this effort

Preparedness Capacities:

Building A Resilient Community



- **Planning**
- **Education**
- **Individual / Family preparedness**
- **Community preparedness**
 - **First responders**
 - **Public health response**
 - **Hospital response**
 - **Others**
- **Recovery**

Preparedness Capacity: *Planning Activities*



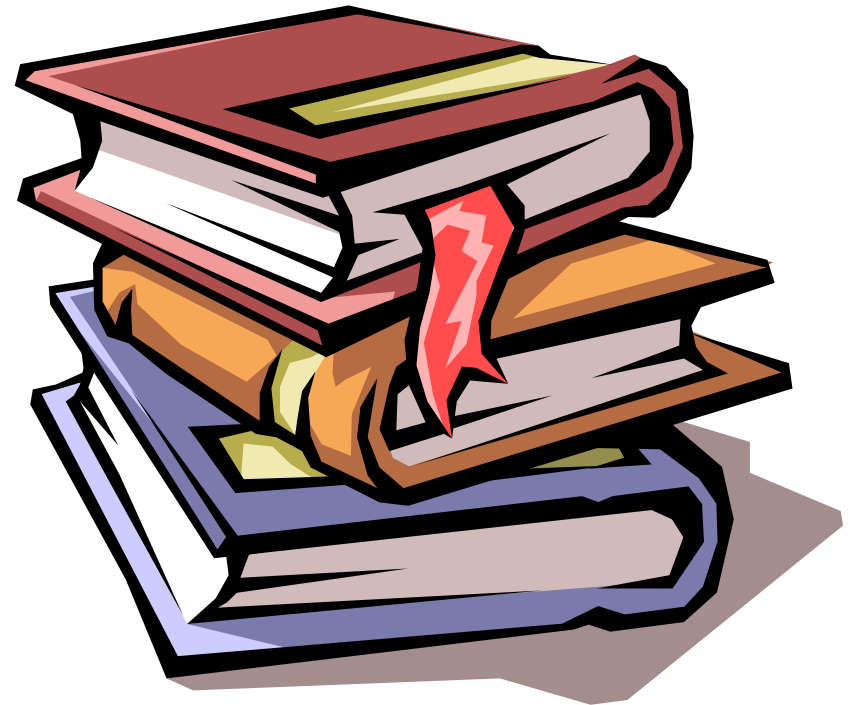
- **Community engagement in local emergency planning**
- **Planning activities**
 - **Individual & family plans**
 - **Business continuity plans**
 - **School emergency plans**
 - **Health system plans**



Community Awareness & Education



- Plan awareness
- Engage in drills
- Media advocacy

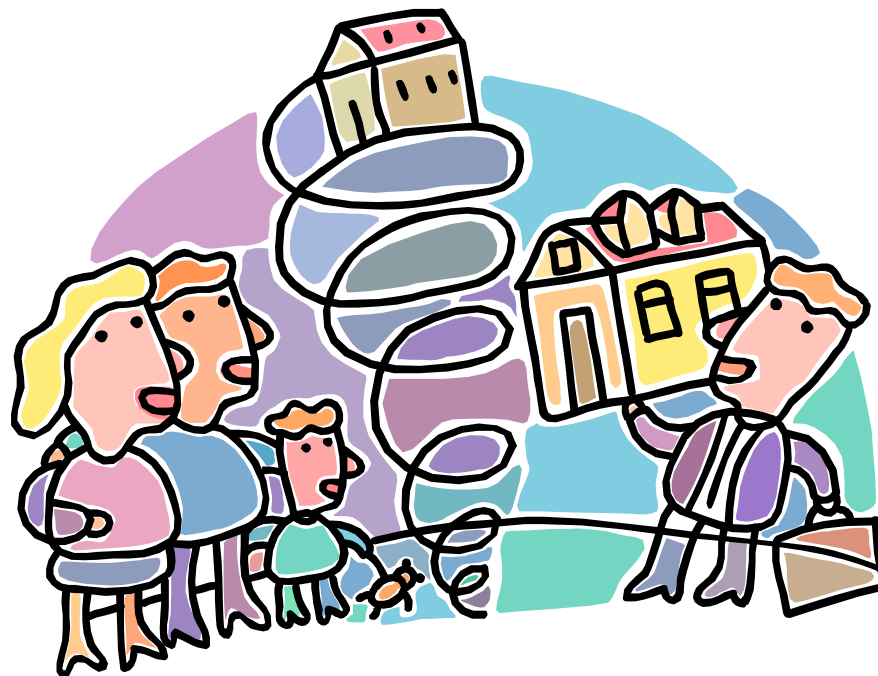


More than a governmental responsibility

Individual / Family Preparedness



- Family plan
- Learn first aid
- Get health insurance
- Get medical home
- Become health literate
- Learn how to get care
- Medical records & history
- Immunizations up to date
- Family emergency communication plan



Community Preparedness



- **First responders**
- **Core public health response**
 - Infectious threats
 - Environmental
 - Terrorism
- **Health care system response**
- **Others**



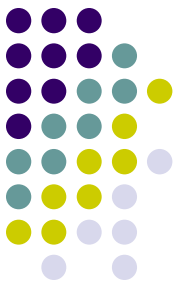


Emergency First Responders

- On scene individuals
- Police
- Fire
- EMS
- Emergency managers
- Health providers
- Public health
- Other government agencies
 - Local
 - Federal
- Voluntary organizations
 - Red Cross
 - Citizens corps



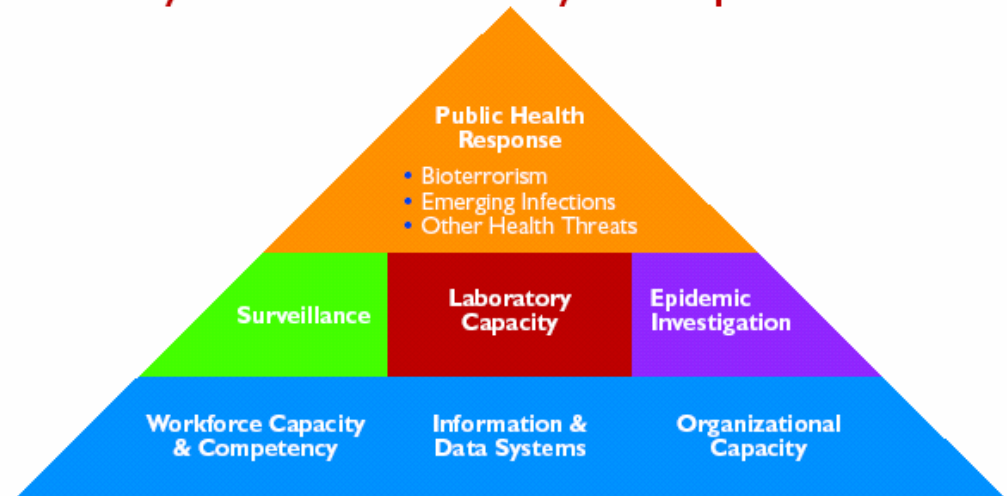
Initial response is local – Then scales up



Core Public Health Response

- Emergency care
- Evacuation
- Nursing care at shelters
- Secure perishable foods
- Ensure potable water
- Provide medical care
- Basic sanitation
- Disease & vector control
- Vaccination (e.g. tetanus)
- Mental health supports
- Safety net primary care

Pyramid of Public Health System Preparedness



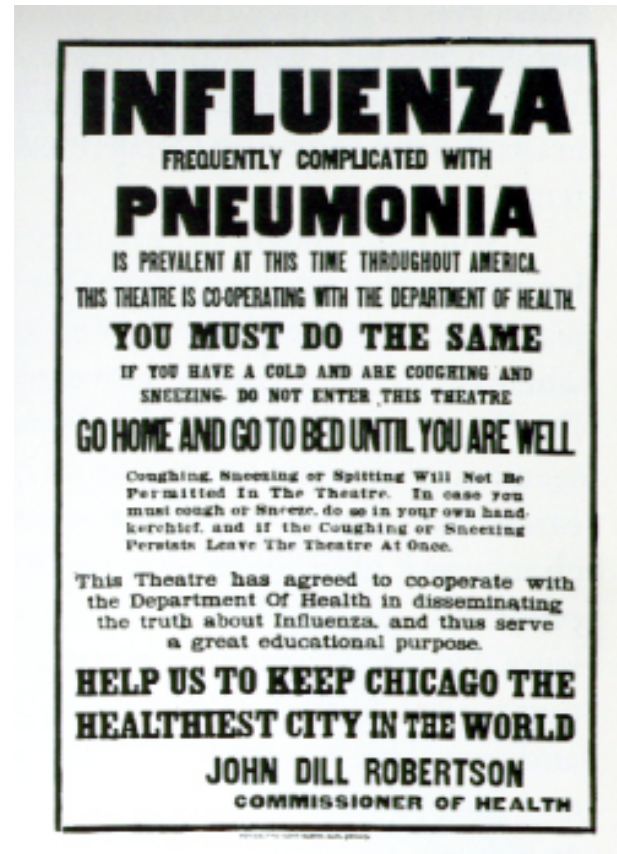
Source: Centers for Disease Control and Prevention

One component of overall emergency response

Public Health Response: *For Infectious Threats*



- Disease surveillance
- Laboratory capacity
- Disease control
 - Mass vaccination
 - Antiviral distribution
 - Exposure reduction, social distancing
- Health system surge capacity
 - Patients, workforce, supplies & equipment, space
- Risk communication
- Mortality management
- Routine health management
- Coordination: Local, regional, national



Community Response:

Implement Social Distancing Strategies



- Voluntary home curfew
- Suspend group activity
- Cancel public events
- Close public places
- Suspend public travel
- Restrict travel
- Snow days
- Non-essential workers off
- Work quarantine
- Cordon sanitaire

Isolation

Separation of infected persons
Usually in a hospital setting (Other settings
may be difficult)

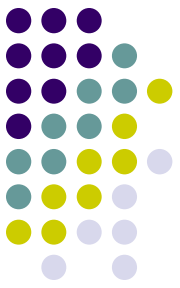
Quarantine

Restriction of persons presumed exposed
Community or individual level

Primary hygiene: Hand washing & coverage of nose & mouth

Barriers: Surgical Masks vs. N - 95 Masks

Community Response: *Manage Societal Disruption*



- **Continuity of government**
- **Business continuity**
- **Access to food, water**
- **Transportation**
- **Public safety**
- **Trash, sanitation**
- **Goods & supplies**
- **Services**
- **Critical infrastructure**

Community Response Capacity:

Provide Human Services



- **Food & Water**
- **Housing**
- **Hygiene & sanitation**
- **Social support systems**
- **Treatment & prophylaxis for disease**
- **Disease monitoring**
- **Dependent care**
- **Compensation & liability issues**



Hospitals Play Many Public Health Roles



- Disease surveillance
- EMS communications
- Therapeutic center
 - Inpatient
 - Outpatient
- Mass casualty provider
- Diagnostic laboratory
- Health education
- Employer



Building Community Resilience: Hospital Role



- Embrace a culture of preparedness
- Surge capacity
 - Resolve ED overcrowding
 - Effective triage systems
 - Adequate workforce
 - Liability & workman's compensation issues
 - Supply chain
 - Drills
- Engage your community
 - Education
 - Planning
 - Drills
- Planning for community role in sequestration or evacuation



APHA National Poll Results



- Most people are unprepared for a public health crisis & they know it.
 - 32% have taken no special steps
 - 87% not enough steps
 - 40% less prepared than in the past
- Many people believe that they are more prepared than they actually are.
 - Only half have a three day supply of food, water & medication
- The term public health crisis does not resonate with people. Yet they are concerned about events that could lead to one.

Vulnerable populations remain of special concern

Community Capacity to Recover: *Related To Preparedness Activities*



- Adequate planning
- Broad knowledge of the plans
- Adequate practice/drills
- Maintaining vigilance



APHA National Poll

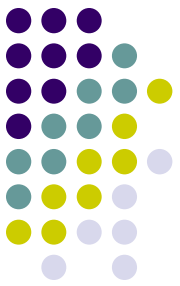
Vulnerable Populations



- Mothers with kids in household
- Local food banks
- Hourly wage workers & employers
- Schools servicing kids kindergarten – 12th grade
- Individuals with chronic health conditions
- Mirrors general population but has special needs
- 58% of mothers no 3 day supply of water
- 61% of people with chronic conditions have at least a two day supply of medications
- Only 18% of employers could continue to pay all employees if operations were interrupted
- Only 15% of hourly workers have enough money saved to provide for their family in such an event.



Community Capacity To Recover: *Also Related To Social Determinants*

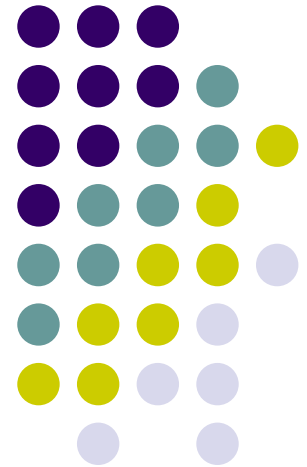


- Poverty
- Job availability
- Housing
- Environmental conditions
- Health infrastructure
- Chronic health needs
 - Mental health big problem
- Education
- Helplessness and Hopelessness
- Discrimination

View your pre-crisis work as a determinant of recovery speed

Georges C. Benjamin, MD, FACP, FACEP (Emeritus)
Executive Director
American Public Health Association
WWW.APHA.ORG

**THANK
YOU**



“Protect, Prevent, Live Well: *Get Ready*”

Acknowledgement: CDC image file for several images