

Pandemic Influenza Checklists

Toby L Merlin, MD
Deputy Director, Influenza
Coordination Unit
Center for Disease Control and
Prevention



SAFER • HEALTHIER • PEOPLE™



Objectives of Presentation

- Overview of US Government Pandemic Influenza Checklists
 - Purpose
 - Format
 - Details
 - Strengths and weaknesses
- Why bother with pandemic influenza checklists (or preparedness)?



Pandemic Influenza Challenges

- **Illness and Death**
- **Increase/decrease demand for services**
- **Staff absenteeism**
- **Contagion**
- **Fear of contagion**
- **Disruption of transportation and distribution**
- **Social disruption**



Pandemic Influenza Challenges


- **Crisis environment, rumors, distortions**
- **Public health interventions**
 - **Personal protective equipment**
 - **Social distancing**
 - **Cancellation of mass gatherings**
 - **School dismissal**
 - **Distribution and administration of antivirals and vaccines**



Pandemic Influenza Checklists

- Provide framework for action
- Identify key elements for planning
- Move from uncertainty to measured informed action

BUSINESS PANDEMIC INFLUENZA PLANNING CHECKLIST



In the event of pandemic influenza, businesses will play a key role in protecting employees' health and safety as well as limiting the negative impact to the economy and society. Planning for pandemic influenza is critical. To assist you in your efforts, the Department of Health and Human Services (HHS) and the Centers for Disease Control and Prevention (CDC) have developed the following checklist for large businesses. It identifies important, specific activities large businesses can do now to prepare, many of which will also help you in other emergencies. Further information can be found at www.pandemicflu.gov and www.cdc.gov/business.


1.1 Plan for the impact of a pandemic on your business:

Completed	In Progress	Not Started	
<input type="checkbox"/>	<input type="checkbox"/>	<input type="checkbox"/>	Identify a pandemic coordinator and/or team with defined roles and responsibilities for preparedness and response planning. The planning process should include input from labor representatives.
<input type="checkbox"/>	<input type="checkbox"/>	<input type="checkbox"/>	Identify essential employees and other critical inputs (e.g. raw materials, suppliers, sub-contractor services/ products, and logistics) required to maintain business operations by location and function during a pandemic.
<input type="checkbox"/>	<input type="checkbox"/>	<input type="checkbox"/>	Train and prepare ancillary workforce (e.g. contractors, employees in other job titles/descriptions, retirees).
<input type="checkbox"/>	<input type="checkbox"/>	<input type="checkbox"/>	Develop and plan for scenarios likely to result in an increase or decrease in demand for your products and/or services during a pandemic (e.g. effect of restriction on mass gatherings, need for hygiene supplies).
<input type="checkbox"/>	<input type="checkbox"/>	<input type="checkbox"/>	Determine potential impact of a pandemic on company business financials using multiple possible scenarios that affect different product lines and/or production sites.
<input type="checkbox"/>	<input type="checkbox"/>	<input type="checkbox"/>	Determine potential impact of a pandemic on business-related domestic and international travel (e.g. quarantines, border closures).
<input type="checkbox"/>	<input type="checkbox"/>	<input type="checkbox"/>	Find up-to-date, reliable pandemic information from community public health, emergency management, and other sources and make sustainable links.
<input type="checkbox"/>	<input type="checkbox"/>	<input type="checkbox"/>	Establish an emergency communications plan and revise periodically. This plan includes identification of key contacts (with back-ups), chain of communications (including suppliers and customers), and processes for tracking and communicating business and employee status.
<input type="checkbox"/>	<input type="checkbox"/>	<input type="checkbox"/>	Implement an exercise/drill to test your plan, and revise periodically.

1.2 Plan for the impact of a pandemic on your employees and customers:

Completed	In Progress	Not Started	
<input type="checkbox"/>	<input type="checkbox"/>	<input type="checkbox"/>	Forecast and allow for employee absences during a pandemic due to factors such as personal illness, family member illness, community containment measures and quarantines, school and/or business closures, and public transportation closures.
<input type="checkbox"/>	<input type="checkbox"/>	<input type="checkbox"/>	Implement guidelines to modify the frequency and type of face-to-face contact (e.g. hand-shaking, seating in meetings, office layout, shared workstations) among employees and between employees and customers (refer to CDC recommendations).
<input type="checkbox"/>	<input type="checkbox"/>	<input type="checkbox"/>	Encourage and track annual influenza vaccination for employees.
<input type="checkbox"/>	<input type="checkbox"/>	<input type="checkbox"/>	Evaluate employee access to and availability of healthcare services during a pandemic, and improve services as needed.
<input type="checkbox"/>	<input type="checkbox"/>	<input type="checkbox"/>	Evaluate employee access to and availability of mental health and social services during a pandemic, including corporate, community, and faith-based resources, and improve services as needed.
<input type="checkbox"/>	<input type="checkbox"/>	<input type="checkbox"/>	Identify employees and key customers with special needs, and incorporate the requirements of such persons into your preparedness plan.

December 6, 2005
Version 3.6





Approach to Checklists

- **Small number of broad categories of actions**
- **Memorable organizational framework**
- **Mutually exclusive, collectively exhaustive categories – MECE**
- **Keep it simple, keep it short**
- **Include target audience in development**



Format for Checklists

- **Plan for impact on operations**
- **Protect employees, customers, others**
- **Establish policies**
- **Allocate resources**
- **Communicate and educate employees**
- **Coordinate with external organizations**



US GOVERNMENT PANDEMIC INFLUENZA CHECKLISTS

January, 2008

- State and Local Public Health
- Individuals and Families
- Business
- US Business with Overseas Operations
- Childcare and Preschool
- School Districts
- Colleges and Universities
- Home Health Care
- Medical Offices and Clinics



SAFER • HEALTHIER • PEOPLE™



US GOVERNMENT PANDEMIC INFLUENZA CHECKLISTS

January, 2008

- Emergency Medical Service and Medical Transport
- Long Term Care and other Residential Care Facilities
- Faith-based and Community Organizations
- Law Enforcement
- Correctional Facilities
- Travel Industry
- Health Insurers
- Hospital (version 2)



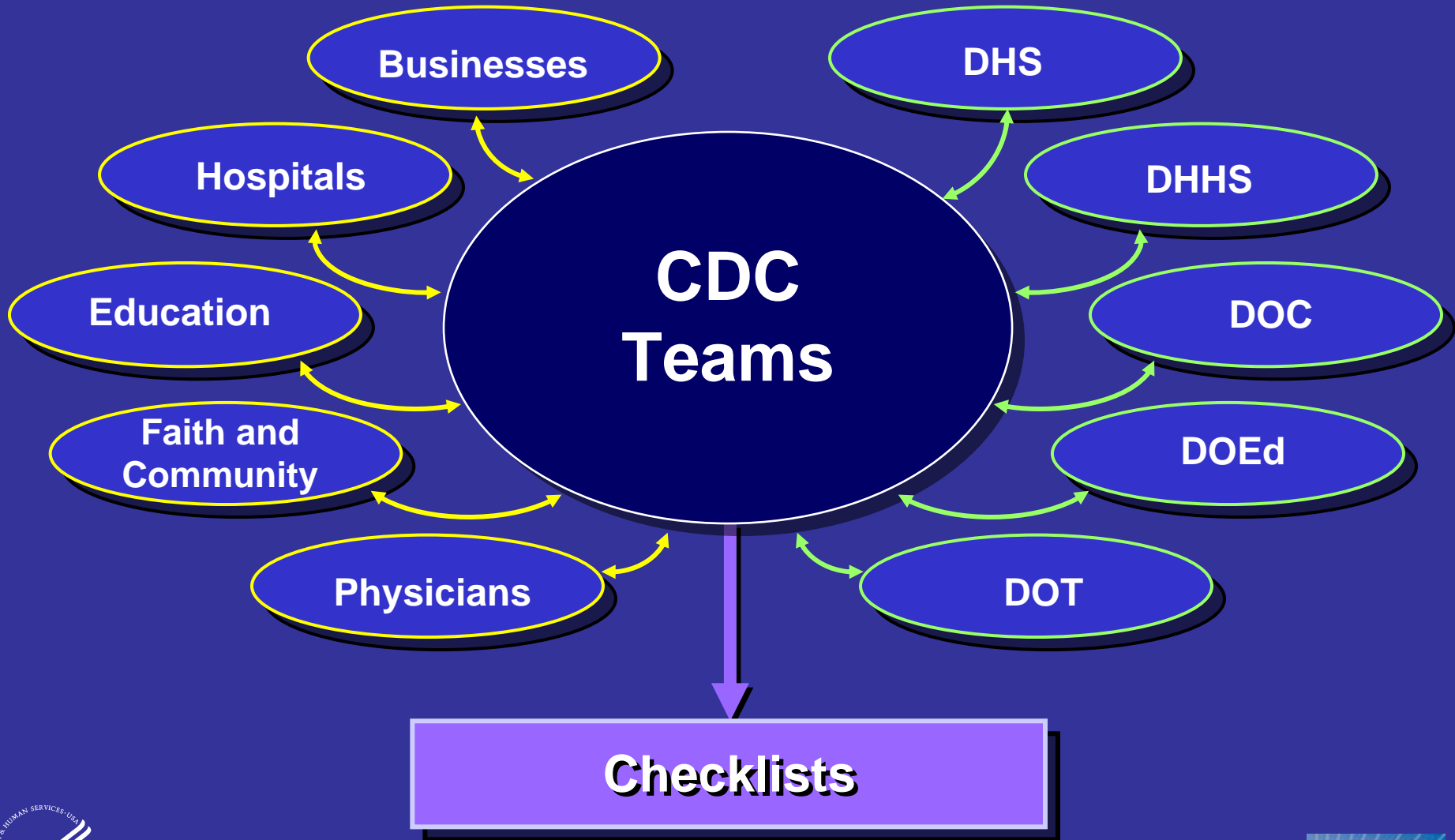
SAFER • HEALTHIER • PEOPLE™



Methodology for Checklists

Organizations

Other Federal Agencies



US Government Pandemic Influenza Checklists

Strengths

- Initial early release
- Production driven by demand from target audiences
- Target audiences involved in production
- Successful format – frequently copied

Weaknesses

- Government clearance eventually delayed release of later checklists
- Not linked to more detailed toolkits
- Not “living” documents



Why bother with pandemic influenza checklists?

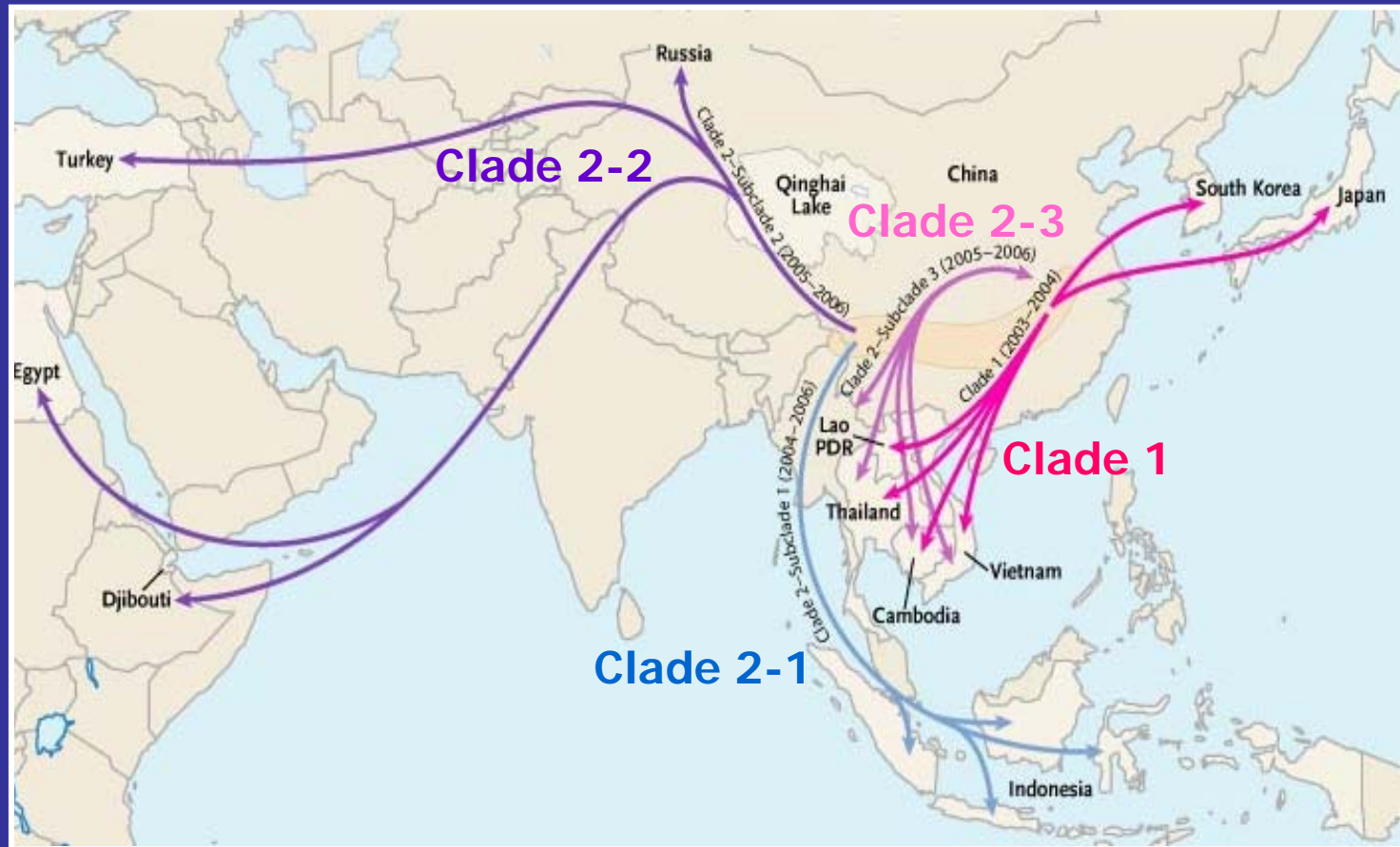
Or pandemic influenza preparedness?



SAFER • HEALTHIER • PEOPLE™



Spread of Influenza A(H5N1) Viruses



Webster RG, Govorkova EA. N Engl J Med. 2006; 355: 2174-7.

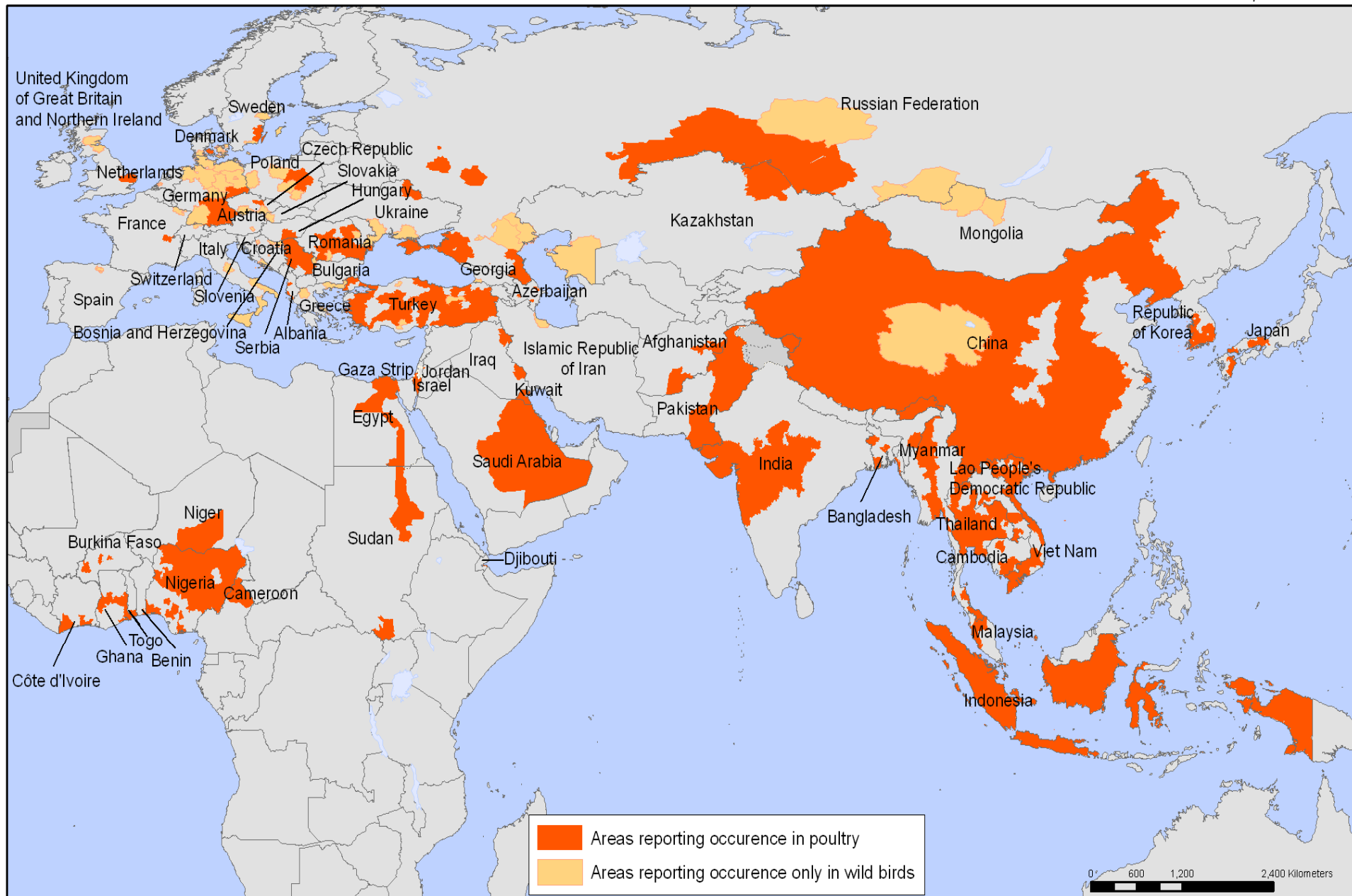


SAFER • HEALTHIER • PEOPLE™



Areas reporting confirmed occurrence of H5N1 avian influenza in poultry and wild birds since 2003

Status as of 07 December 2007
Latest available update



© WHO 2007. All rights reserved

The boundaries and names shown and the designations used on this map do not imply the expression of any opinion whatsoever on the part of the World Health Organization concerning the legal status of any country, territory, city or area or of its authorities, or concerning the delimitation of its frontiers or boundaries. Dotted lines on maps represent approximate border lines for which there may not yet be full agreement.

Data Source: World Organisation for Animal Health (OIE) and national governments
Map Production: Public Health Mapping and GIS
International Health Regulations Coordination, World Health Organization

Cumulative Number of Confirmed Human Cases of Avian Influenza A/(H5N1) Reported to WHO

11 January 2008

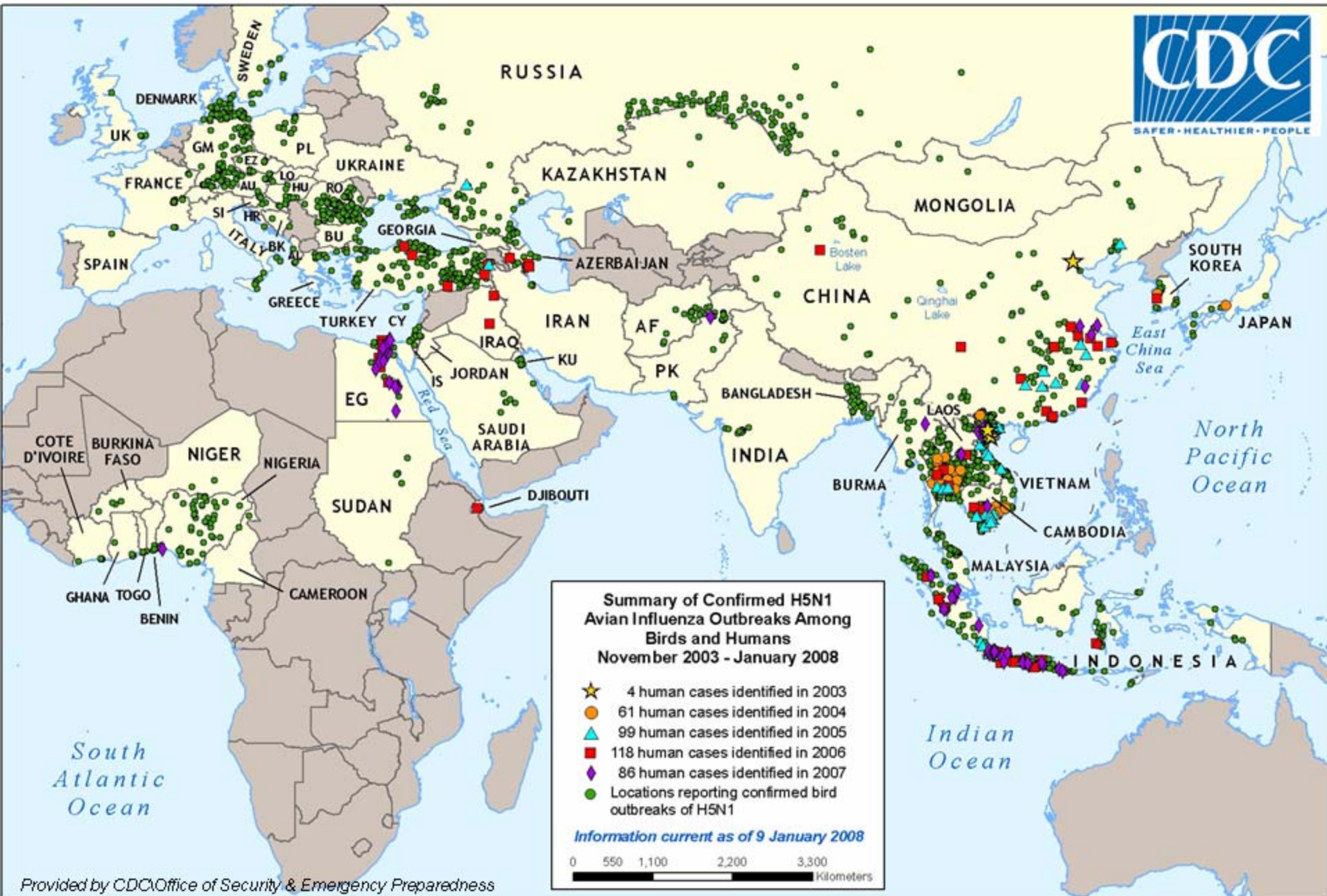
Country	2003		2004		2005		2006		2007		Total	
	cases	deaths	cases	deaths	cases	deaths	cases	deaths	cases	deaths	cases	deaths
Azerbaijan	0	0	0	0	0	0	8	5	0	0	8	5
Cameroon	0	0	0	0	4	4	2	2	1	1	7	7
China	1	1	0	0	8	5	13	8	5	3	27	17
Djibouti	0	0	0	0	0	0	1	0	0	0	1	0
Egypt	0	0	0	0	0	0	18	10	25	9	43	19
Vietnam	0	0	0	0	20	13	55	45	42	36	117	94
Thailand	0	0	0	0	0	0	3	2	0	0	3	2
Ukraine	0	0	0	0	0	0	0	0	2	2	2	2
Uzbekistan	0	0	0	0	0	0	0	0	1	0	1	0
Nigeria	0	0	0	0	0	0	0	0	1	1	1	1
Pakistan	0	0	0	0	0	0	0	0	1	1	1	1
Thailand	0	0	17	12	5	2	3	3	0	0	25	17
Turkey	0	0	0	0	0	0	12	4	0	0	12	4
Vietnam	3	3	29	20	61	19	0	0	8	5	101	47
Total	4	4	46	32	98	43	115	79	86	58	349	216

Total number of cases includes number of deaths. WHO reports only laboratory-confirmed cases..All dates refer to onset of illness.



SAFER • HEALTHIER • PEOPLE™





Update 3

The Ministry of Health and Population of Egypt has announced the death of a previously confirmed case of H5N1 infection.

Data Source: World Health Organization

The 50 years old female from Domiatt governorate died on 31 December.

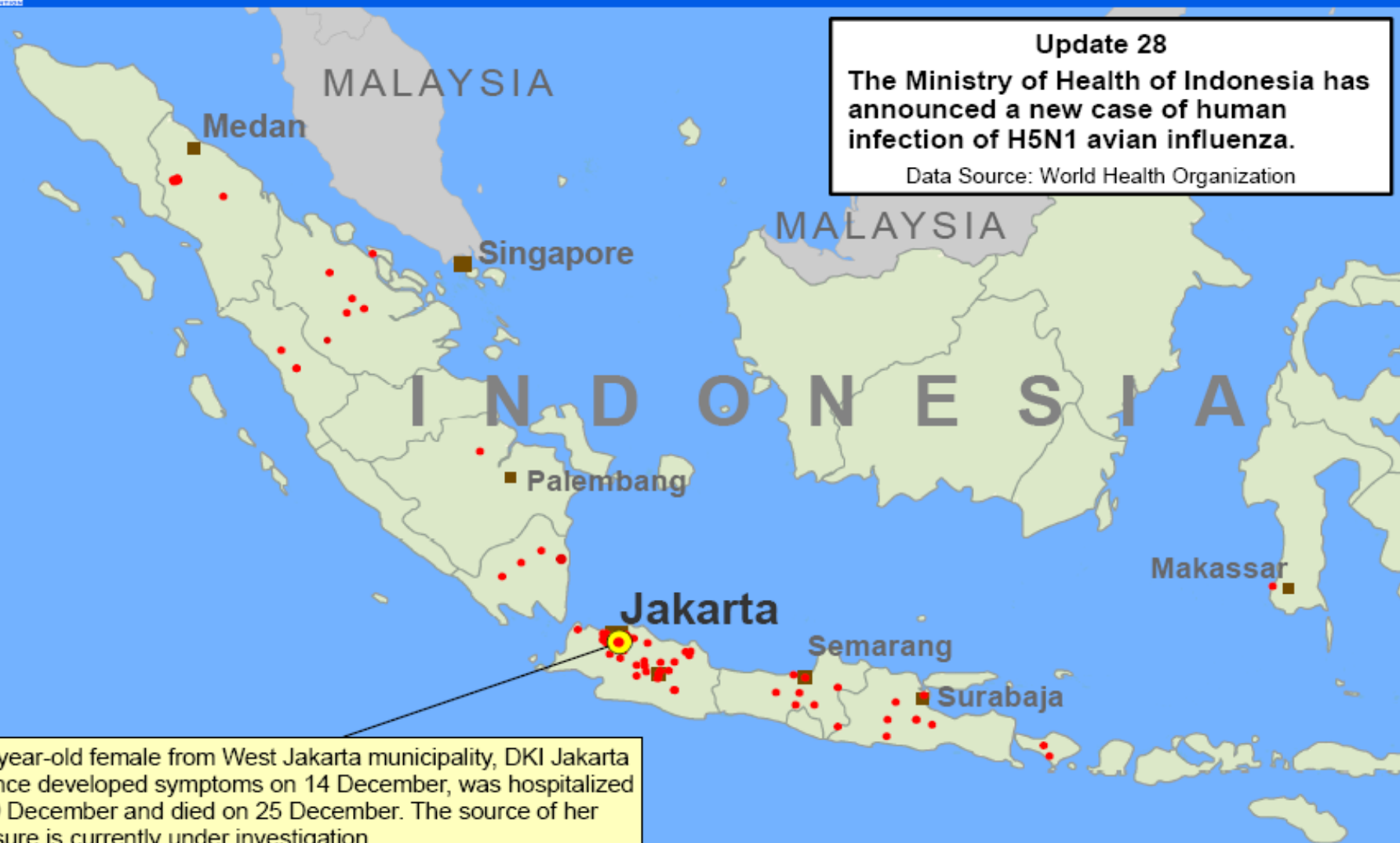
Of the 43 cases confirmed to date in Egypt, 19 have been fatal.



- Human Cases Influenza A/H5N1
- Major Cities
- Egyptian Governorates

Case locations based on centroids of governorates.

Update 28
The Ministry of Health of Indonesia has announced a new case of human infection of H5N1 avian influenza.
Data Source: World Health Organization



A 24-year-old female from West Jakarta municipality, DKI Jakarta province developed symptoms on 14 December, was hospitalized on 19 December and died on 25 December. The source of her exposure is currently under investigation.

Of the 116 cases confirmed to date in Indonesia, 94 have been fatal.

- Human Cases of Influenza A/H5N1
- Major Cities
- Indonesian Provinces

The first case of human infection with H5N1 avian influenza has been confirmed in Pakistan. Laboratory tests conducted by the WHO H5 Reference Laboratory in Cairo, Egypt and WHO Collaborating Center for Reference and Research on Influenza, in London, United Kingdom have confirmed the presence of avian influenza virus strain A(H5N1) in samples collected from one case in an affected family. Additional laboratory analysis, including gene sequencing, is ongoing.

Data Source: World Health Organization



Investigation of potential arrival of H5N1 human infection in US

- At 3:30pm on Friday, December 7, 2007 – CDC was notified by New York State Public Health of a 38-yo male who returned from Pakistan after possible exposure to H5N1 infection and was hospitalized in Nassau County, NY on December 6.
- Aggressive domestic and international investigation followed.



Events Leading to CDC Notification

Oct - November 2007						
28	29	30	31	1	2	3
4	5	6	7	8	9	10
11	12	13	14	15	16	17
18	19	20	21	22	23	24
25	26	27	28	29	30	

2	3	4	5	6	7	8
December 2007						



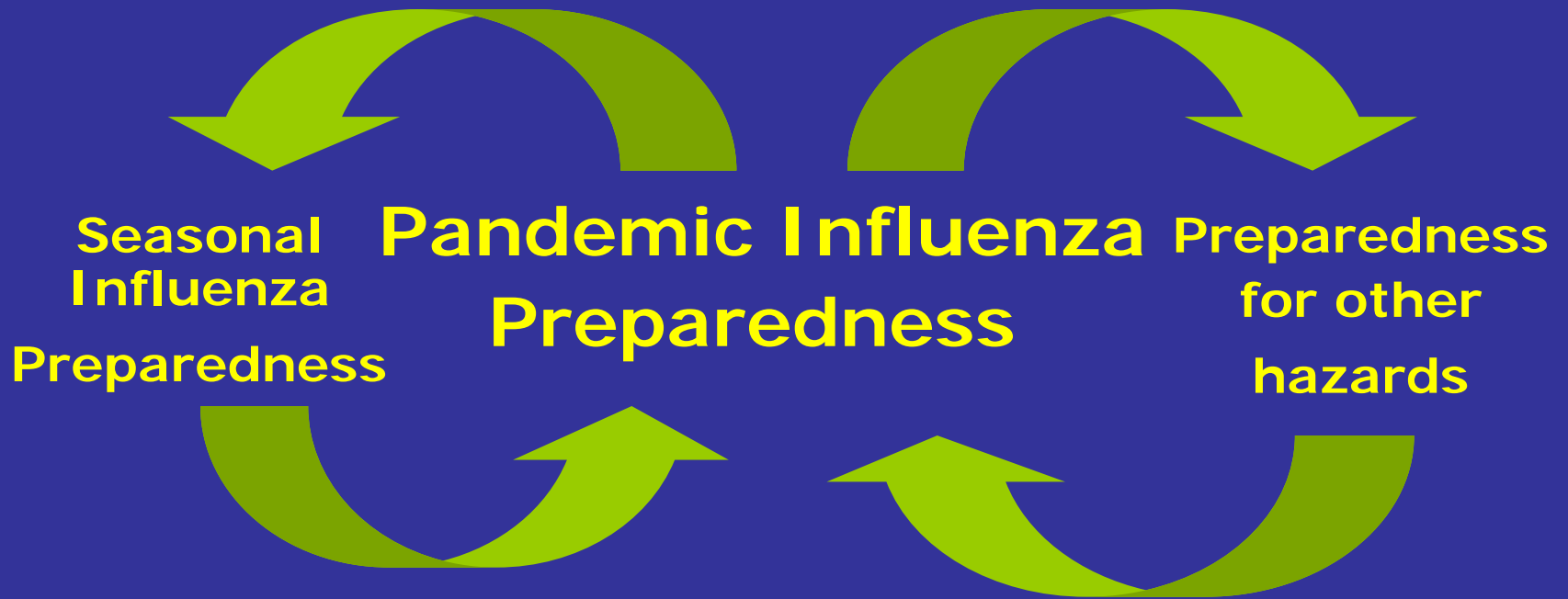
Why bother with pandemic influenza checklists?

Risk of severe influenza pandemic remains a very real threat!



SAFER • HEALTHIER • PEOPLE™





SAFER • HEALTHIER • PEOPLE™

