

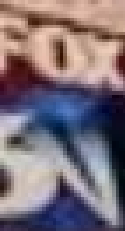


**welcome**





E



**BREAKING NEWS**

**FOX6 STORMTRACKER TRACKING  
TORNADO IN TUSCALOOSA COUNTY**

**IRON HEIGHTS BAPTIST CHURCH BROOKSIDE: NO PM SERVICE**



































































**N E P T A**

**ANYONE REMEMBER THE  
ST. RITA NURSING HOME  
IN NEW ORLEANS  
FOLLOWING  
KATRINA  
8/2005?**













# NEPTA

LET'S START OUT BY ASKING THIS QUESTION

**Is there any place in the united states that  
Doesn't experience NATURAL DISASTERS??**

# NEPTA

**IT MAKES GOOD SENSE THAT LOCAL GOVERNMENTS  
BE PREPARED!**

**THEN WHAT ABOUT THE RURAL HOSPITALS,  
NURSING HOMES, AND EXTENDED LIVING CENTERS?**

**DO YOU THINK THEY SHOULD  
BE PREPARED?**

# NEPTA

**THERE ARE MANY TYPES OF  
EMERGENCY management PLANS -**

**EMERGENCY OPERATIONS PLAN**

**EMERGENCY ACTIVATION PLAN**

**NATURAL HAZARD MITIGATION PLAN**

**CONTINUITY OF OPERATIONS PLAN**

**HAZARDOUS MATERIALS PLAN**

**NPS POD PLAN**

**BUSINESS CONTINUITY PLAN**

**AS WELL AS MANY OTHERS**

# NEPTA

## EMERGENCY OPERATIONS PLAN (EOP)

An Emergency Operations Plan is a document that:

- ☹ Assigns responsibility to organizations and individuals for carrying out specific actions at projected times and places in an emergency that exceeds the capability or routine responsibility.
- ☹ Sets forth lines of authority and organizational relationships, and shows how all actions will be coordinated.
- ☹ Describes how people and property will be protected in emergencies and disasters.
- ☹ Identifies personnel, equipment, facilities, supplies, and other resources available--within the jurisdiction or by agreement with other jurisdictions--for use during response and recovery operations.
- ☹ Identifies steps to address mitigation concerns during response and recovery activities.

# NEPTA

## EMERGENCY ACTIVATION PLAN (EAP)

An Emergency Activation Plan is a document that:

- ☹ Creates levels of alert for all participants (i.e. 1 thru 4)
- ☹ Creates 'alpha' identifiers for different disasters (i.e. 'B')
- ☹ Creates spreadsheets for different departments to use in disaster preparation

# NEPTA

## NATURAL HAZARD MITIGATION PLAN

**A Natural Hazard Mitigation Plan is a document that:**

- ☺ **Enable an organization to prevent and reduce loss of life and property from natural hazards.**
- ☺ **Natural Hazard Mitigation is the development and implementation of activities designed to reduce or eliminate impacts resulting from natural hazards.**
- ☺ **The activities identified in this plan address any and all hazards which are to be of danger to the organization after having completed ascertained through a natural hazard vulnerability analysis.**



# NEPTA

## CONTINUITY OF OPERATIONS PLAN (COOP)

A Continuity of Operations Plan is a document that:

- ☺ Assures the capability exists to continue essential agency functions across a variety of potential emergencies.
- ☺ Ensures the continuous performance of an agency's essential functions/operations during an emergency.
  - ☺ Protects essential facilities, equipment, records and other assets
  - ☺ Reduces or mitigating disruptions to operations
  - ☺ Reduces loss of life, minimizing damage and losses
  - ☺ Achieve a timely and orderly recovery from an emergency and resumption of full service

# NEPTA

## HAZARDOUS MATERIALS PLAN (HAZMAT)

**A Hazardous Materials Plan is a document that:**

- ☺ Provides hazard specific procedures and guidelines for response to an actual incident involving a hazardous material.**
- ☺ Identify the facilities and transportation routes where hazardous materials are present.**
  - ☺ Establish emergency response procedures, including evacuation plans, for dealing with accidental chemical releases.**
  - ☺ Set up notification procedures for those who will respond to a hazardous materials incident.**
  - ☺ To establish methods for determining the occurrence and severity of a release and the areas and populations likely to be affected.**
  - ☺ Establish ways to notify the public of a release.**

# NEPTA

## **NATIONAL Strategic National Stockpile (SNS) (POD) PLAN (NPSP)**

**A National Strategic Pharmaceutical Stockpile Plan is a document that:**

- ☺ **The mission of CDC's National Pharmaceutical Stockpile program (NPSP) is to ensure the availability of life saving pharmaceuticals, antibiotics, chemical interventions, as well as medical, surgical and patient support supplies, and equipment for prompt delivery to the site of a disaster, including a possible biological or chemical terrorist event anywhere in the United States.**
- ☺ **The NPSP is available to supplement the initial response to an incident of biological or chemical terrorism.**
- ☺ **To provide critical drugs and medical material that would otherwise be unavailable to local communities.**

# NEPTA

**NOW, let's us assume that you as a local government have satisfied  
Your community government's need and ALL rural hospitals, nursing homes,  
and extended living centers for emergency planning –**

**BUT**

**your job is not done – what about their need to get started again FOLLOWING  
a disaster??**

**N E P T A**

**To these businesses**

**We Say!**

**BCP**

# NEPTA

## BUSINESS CONTINUITY PLAN (BCP)

A Business Continuity Plan is a document that:

☹ **Creates the ability for a business  
devasted by a disaster to**

**'START OVER'**

# NEPTA

“The number of disasters has grown: fewer than 100 in 1975 to more than 400 in 2005. Approximately 2.6 billion people were affected by natural disasters over the past ten years, compared to 1.6 billion the previous decade.”

IEG World Bank 2006





# NEPTA

Total disasters for 2009 – 576

Total disasters for 2010 – 950

Total disasters for 2011 – 830

- Losses – \$380 billion
- Avg \$75 billion 1981 to 2010



# NEPTA

“A report by Munich Re found that some 295,000 people were killed and \$130 billion were lost in 2010 as a result of catastrophic events. These totals dwarf the figures from 2009, when only 11,000 deaths and \$60 billion were caused by forces of nature.”

***New York Daily News***

# **N E P T A**

## **Types of Disasters**

**FIRE**

**HURRICANE**

**EARTHQUAKE**

**SEVERE THUNDERSTORM**

**LIGHTNING**

**CRIME**

**HAZARDOUS MATERIALS**

**FLOODING**

**TERRORISM**

**TORNADO**

**EPIDEMIC**

**WINTER STORM**

**CYBER SPACE**

# NEPTA

After the disaster ...

What do you need to start over?



# NEPTA

After the disaster ...

What you need to start over  
IS

A Plan to start over – a complete  
list of who, what, where, and  
when!

# NEPTA

**What Business Continuity Plan?**



# NEPTA

## Business Continuity Plan

- identifies the organization's exposure
- synthesizes assets
- maintains competitive advantage
- system integrity



# NEPTA

## What is in a BCP?

“A completed BCP cycle results in a formal printed manual available for reference before, during, and after disruptions. Its purpose is to reduce adverse stakeholder impacts determined by both the disruption's scope (who and what it affects to what extent) and duration (e.g., hours, days, months). “

Wikipedia

# NEPTA

## What is in a BCP?

**IMPACT SELF TEST**

**BCP PLANNING TEAM**

**BUSINESS IMPACT ANALYSIS**

**INSURANCE REQUIREMENTS**

**INSURANCE**

**HAZARD VULNERABILITY ANALYSIS**

**IMPORTANT DOCUMENTS**

**ESSENTIAL FUNCTIONS**

**PRACTICE INFORMATION**

**IMPORTANT PHONE NUMBERS**

**EMPLOYEE DIRECTORY**

**BACK-UP FACILITY**

**SUPPLIERS**

**ON-GOING CASES**

**N E P T A**

What else can you do?

**HELP THE FAMILIES IN YOUR  
COMMUNITY!!**

# NEPTA

What else can you do?

**HELP THEM UNDERSTAND  
THE IMPORTANCE OF  
BEING PREPARED AT THE  
FAMILY LEVEL!**

# NEPTA

“Despite the ever-present risk of natural and man-made disasters, the healthcare system has never been well-prepared for their potential consequences.”

## **A Dynamic Model to Support Surge Capacity Planning in a Rural Hospital**

**William Manley, RN**

**Jack Homer, PhD**

**Marna Hoard, MPA, MPH**

**Sanjoy Roy, BS**

**Paul M. Furbee, MA**

**Daniel Summers, RN, BSN**

**Robert Blake, MD**

**Marsha Kimble, RN**

**\*West Virginia University, Robert C. Byrd Health Sciences Center, Center for Rural Emergency Medicine, Morgantown, WV**

# NEPTA

“Disaster preparedness has always been an area of major concern for the medical community, but recent world events have prompted an increased interest. The health care system must respond to disasters of all types, whether the incidents occur in urban or rural settings. Although the barriers and challenges are different in the rural setting, common areas of preparedness must be explored.”

## **Realities of Disaster Preparedness in Rural Hospitals**

- [Paul M. Furbee](#), MA - [Jeffery H. Coben](#), MD - [Sharon K. Smyth](#), BA - [Daniel E. Summers](#), RN, BSN, CEN, EMT-P
- [Ronald C. Althouse](#), PhD - [Rodney L. Kimble](#), BA, EMT-P - [Aaron T. Kocsis](#), RN, MS - [James C. Helmkamp](#), PhD
- [William G. Manley](#), RN, CEN

# NEPTA

Unfortunately, increased financial pressures force hospitals to keep medical and emergency supply inventory at a “just-in-time” capacity.

And hospitals have so limited their bed capacity that most operate at full utilization on a regular basis.

**Can a rural medical care facility handle the influx of patients to properly deal with the devastating effects of a disaster?**

# NEPTA

A medical facility facing thinner resources and increased accountability to their community for survival an efficient, adaptable disaster plan is the only hope.



**NEPTA**

**NEPTA wants to HELP!!**

# **NEPTA**

## **IN CONCLUSION**

**PLEASE UNDERSTAND NEPTA  
KNOWS THAT YOU DON'T HAVE  
THE TIME IN YOUR BUSY SCHEDULES  
TO DEVOTE TO BUILDING THESE VERY  
IMPORTANT PLANS**

**NEPTA**

**THANK YOU !!**

**ARE THERE ANY  
QUESTIONS??**

# NEPTA

*Please check us out on-line or contact us*

*[Info.nepta.us](http://Info.nepta.us)*