



Leapfrog's National Health Care Ratings Summit

Kate Goodrich, MD MHS
Director, Center for Clinical Standards & Quality,
Chief Medical Officer
Centers for Medicare & Medicaid Services



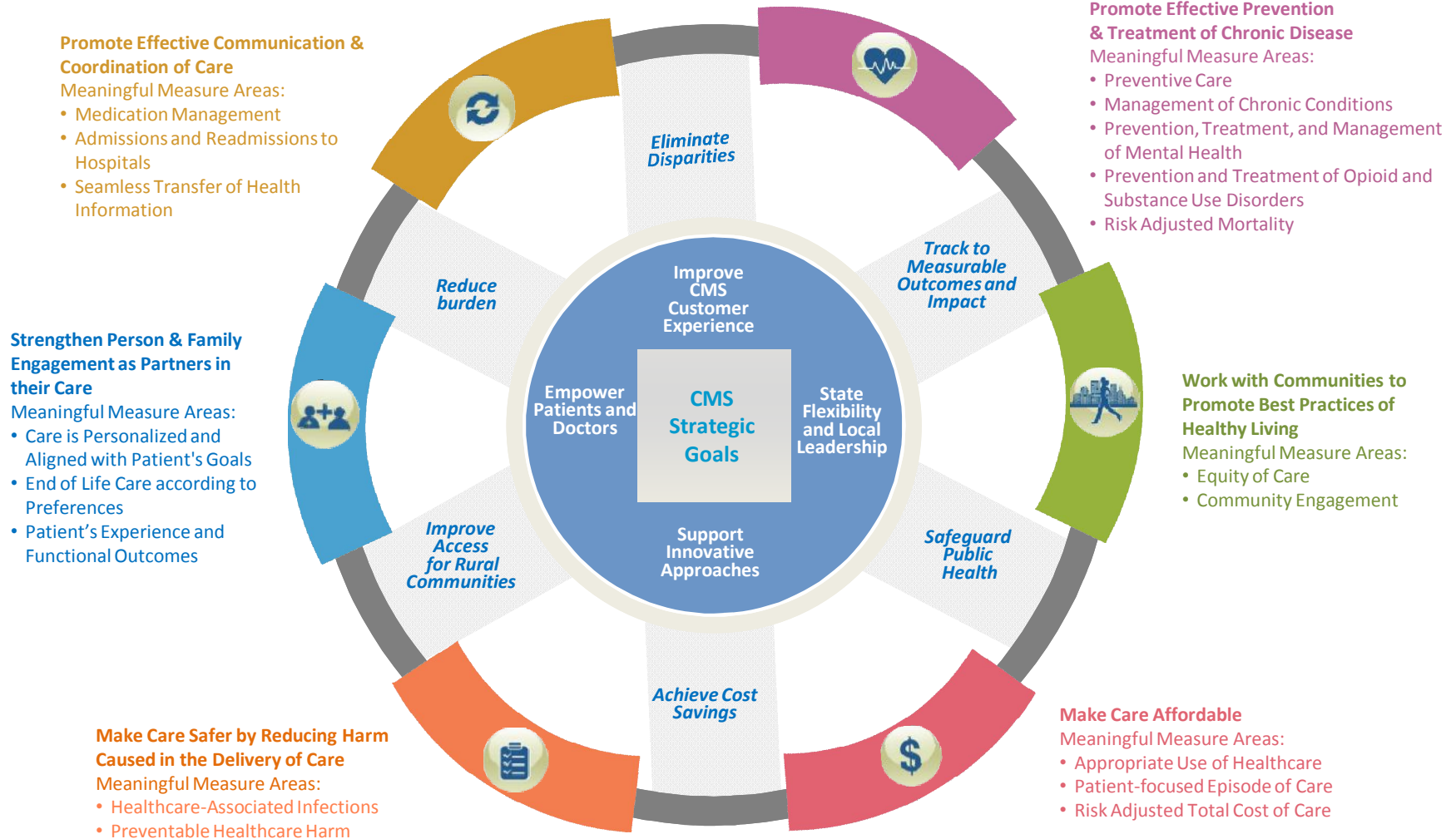
Disclaimers

This presentation was prepared as a tool to assist providers and is not intended to grant rights or impose obligations. Although every reasonable effort has been made to assure the accuracy of the information within these pages, the ultimate responsibility for the correct submission of claims and response to any remittance advice lies with the provider of services.

This publication is a general summary that explains certain aspects of the Medicare Program, but is not a legal document. The official Medicare Program provisions are contained in the relevant laws, regulations, and rulings. Medicare policy changes frequently, and links to the source documents have been provided within the document for your reference

The Centers for Medicare & Medicaid Services (CMS) employees, agents, and staff make no representation, warranty, or guarantee that this compilation of Medicare information is error-free and will bear no responsibility or liability for the results or consequences of the use of this guide.

Meaningful Measures



Measure Development Challenges

Some key challenges to developing measures that are meaningful and appropriate for quality reporting and payment programs include:

- Aligning measures across programs, payers, and payment systems
- Reducing clinician burden of data collection for measure reporting
- Shortening the time frame for measure development
- Streamlining data acquisition for measure testing
- Identifying and developing meaningful outcome measures
- Partnering with patients, frontline clinicians, and professional societies
- Developing Patient-reported Outcome Measurement Tools (PROMs) and appropriate use measures
- Developing measures that promote shared accountability across settings and providers

Now is the time to address these challenges head-on.