

Transparency: Clinician Perspective

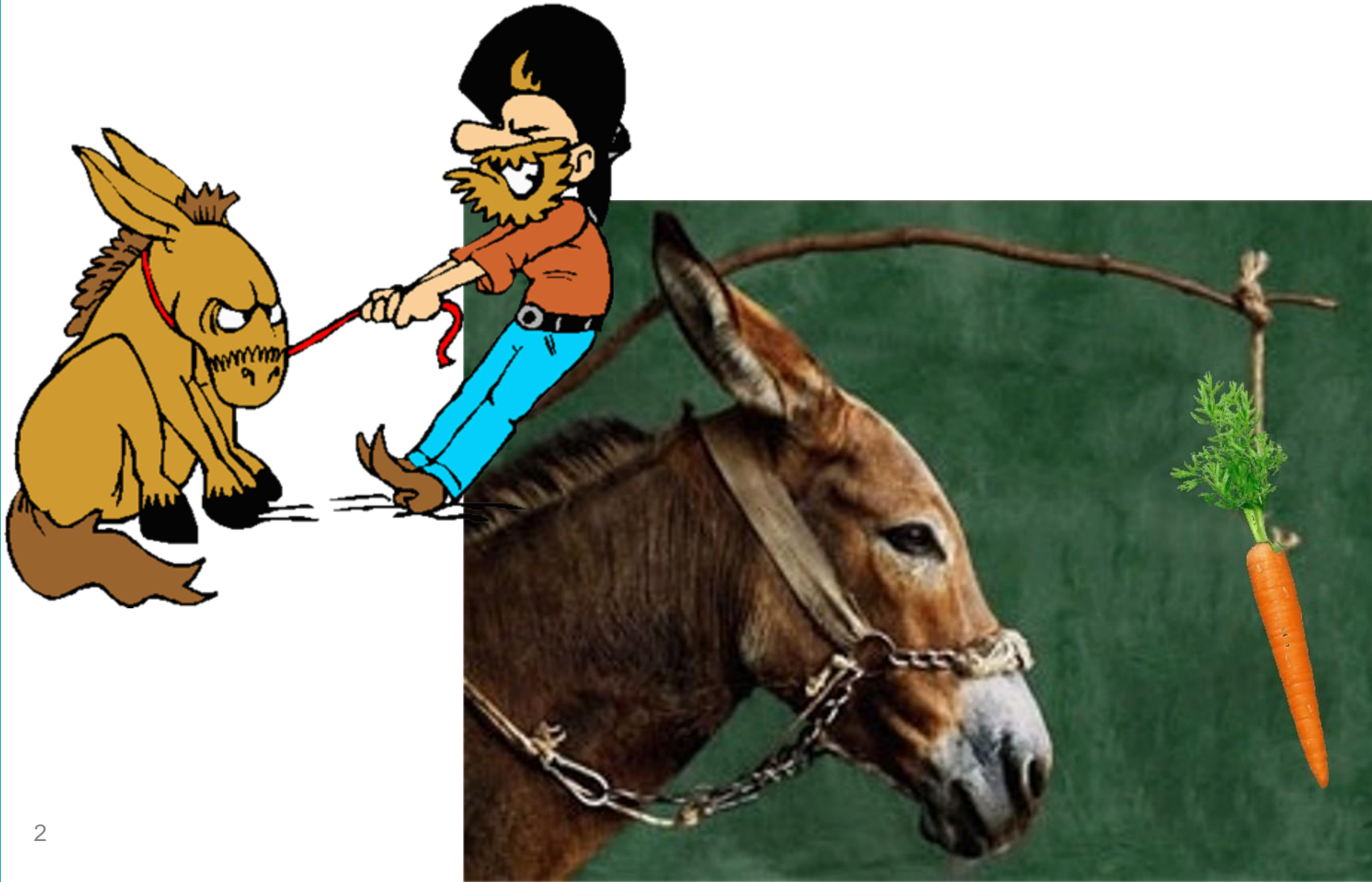
Michael van Duren, MD, MBA

Second National Summit on Health Care
Price, Cost and Quality Transparency

March 16, 2015

Washington, DC

How do Clinicians Change Behavior?



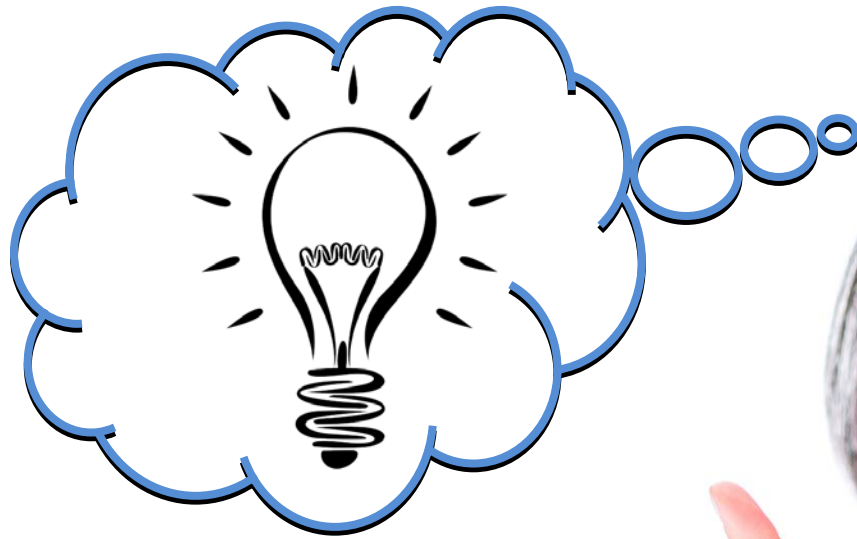
How do Clinicians Change Behavior?



Adult Learning: “Top down” vs. AHA!



Adult Learning: “Top down” vs. AHA!



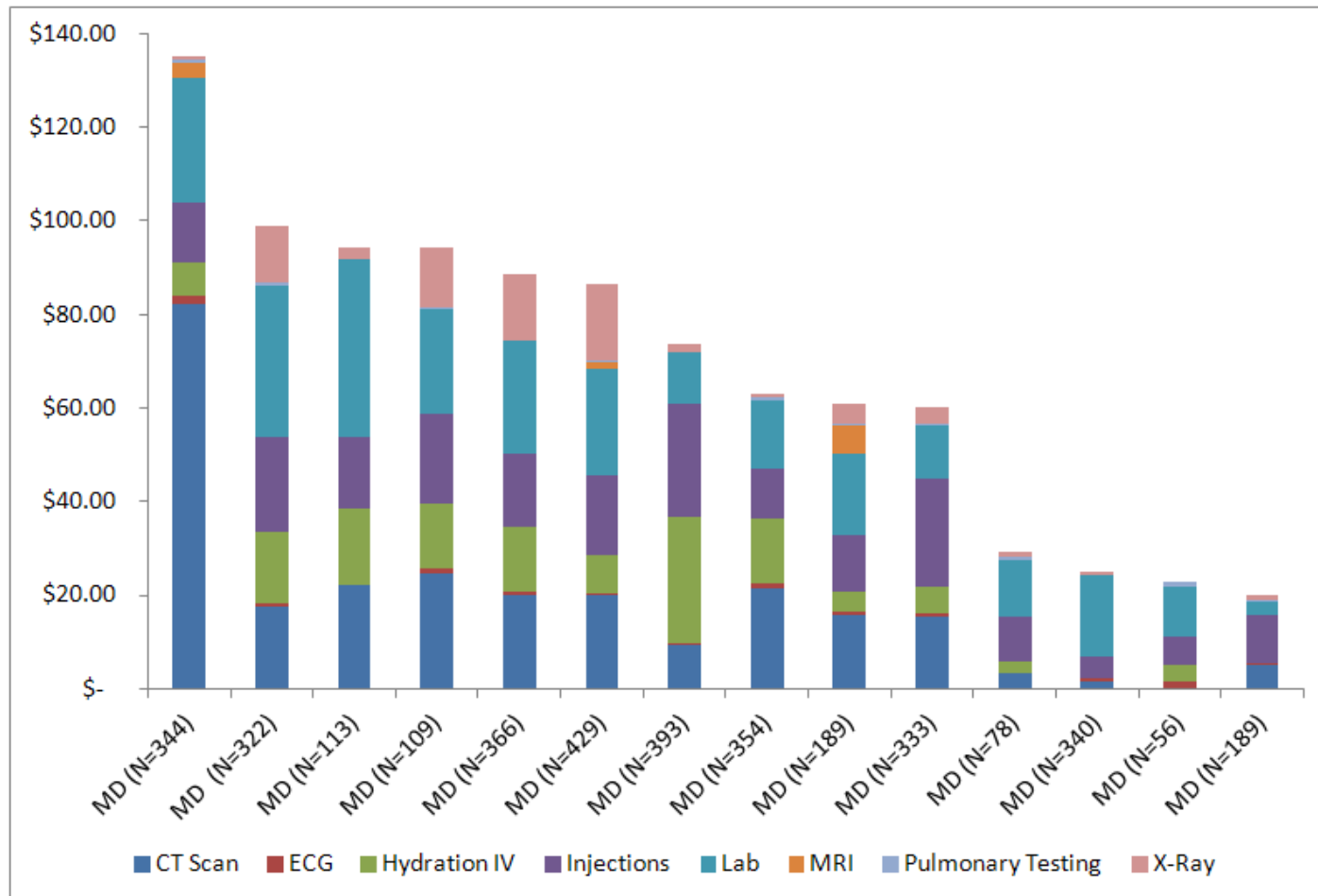
Adult Learning: “Top down” vs. AHA!



URGENT CARE

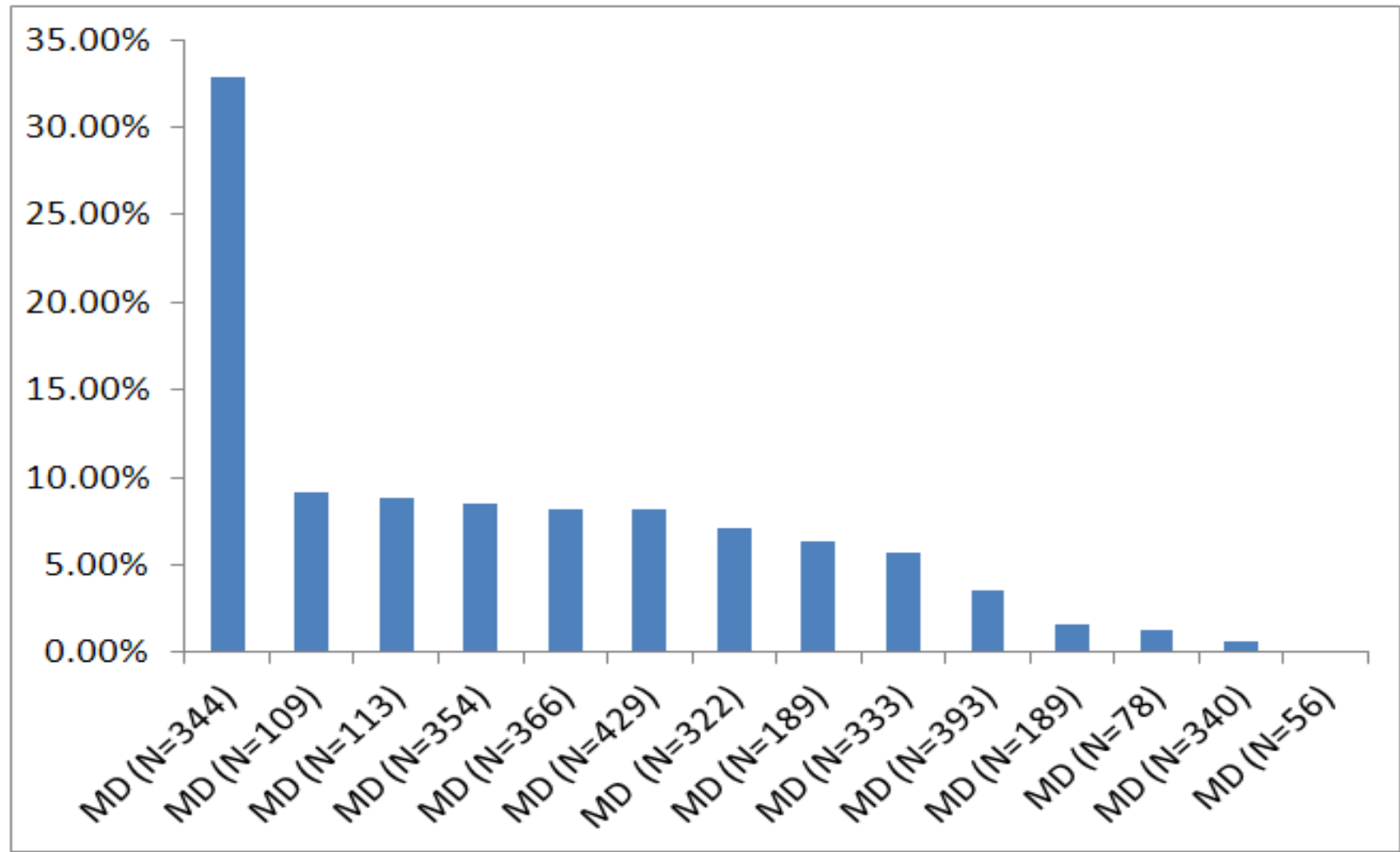
Abdominal Pain

Average Cost For Ancillary Services



Abdominal Pain

Percent of Patients with CT Scans



PERCENT OF PATIENTS WITH ABDOMINAL PAIN WHO RECEIVED A CT SCAN

Baseline

36 %

Performance since project start

32 %

Current

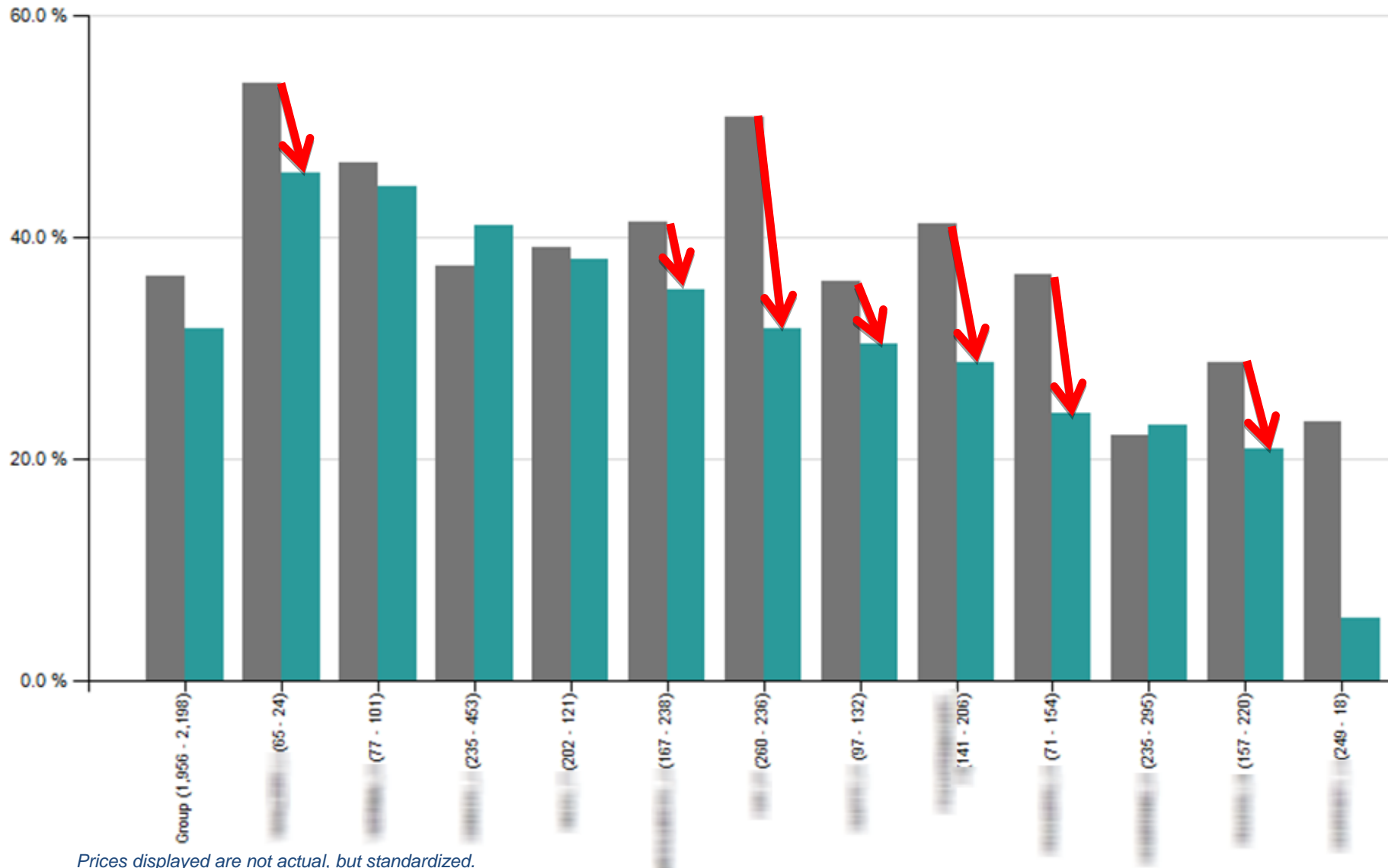
18 %

Savings

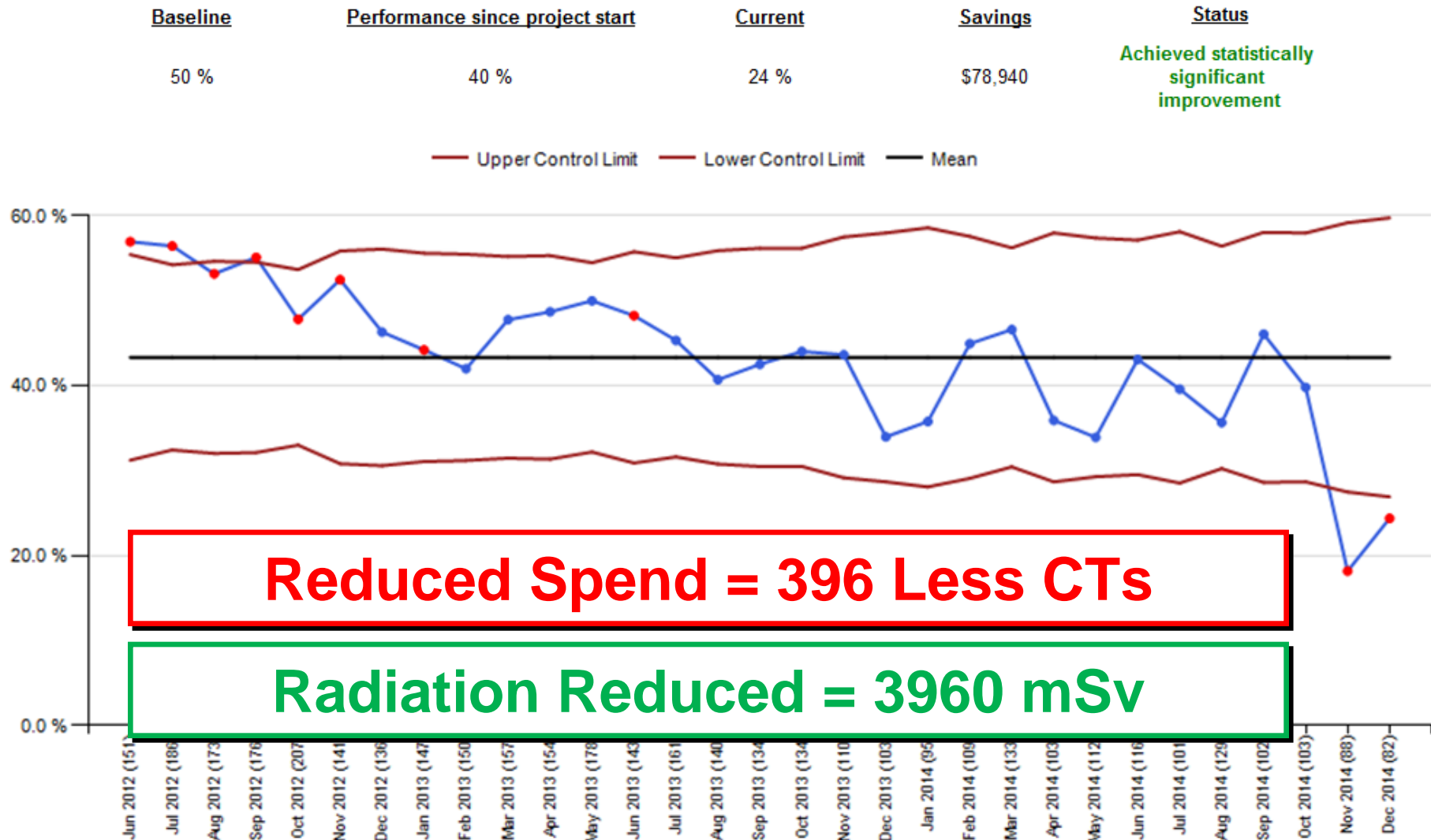
\$78,940

Status

Achieved statistically significant improvement



PERCENT OF PATIENTS WITH ABDOMINAL PAIN WHO RECEIVED AN IMAGING STUDY (COMBINED X-RAY AND CT SCAN)



Measure criteria

Denominator: Count of all patients with an urgent care visit for abdominal pain in the measurement month

Numerator: Count of patients with an order for an x-ray or CT scan with a diagnosis of abdominal pain in the measurement month

Prices displayed are not actual, but standardized.

HOSPITALISTS

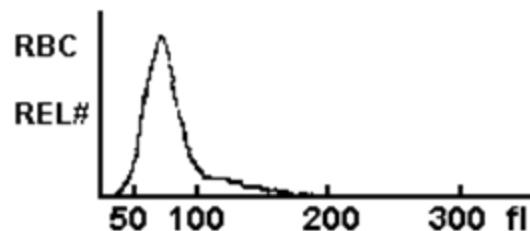
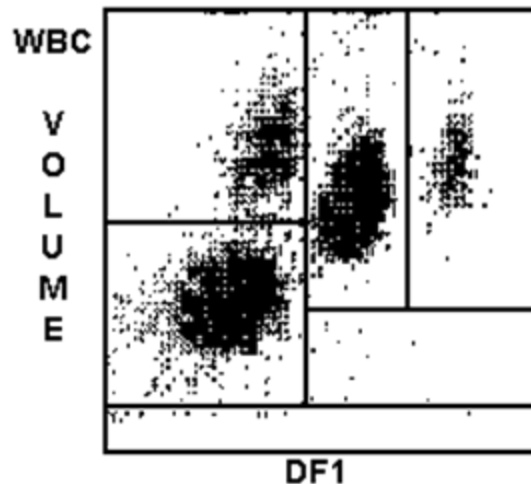
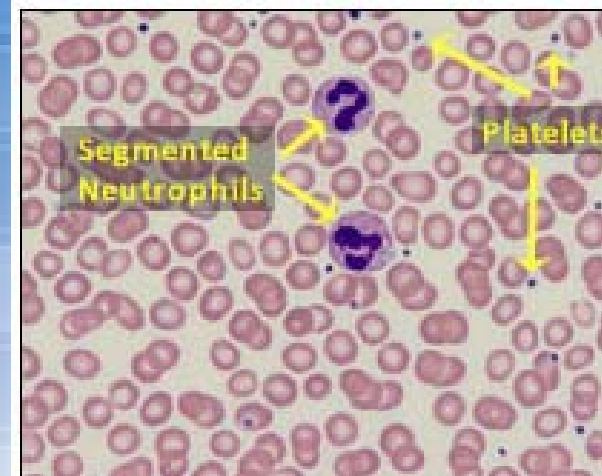


**CBC,
Metabolic
panel**

**“Repeat daily
until
discharge”**



Blood Test: Complete Blood Count

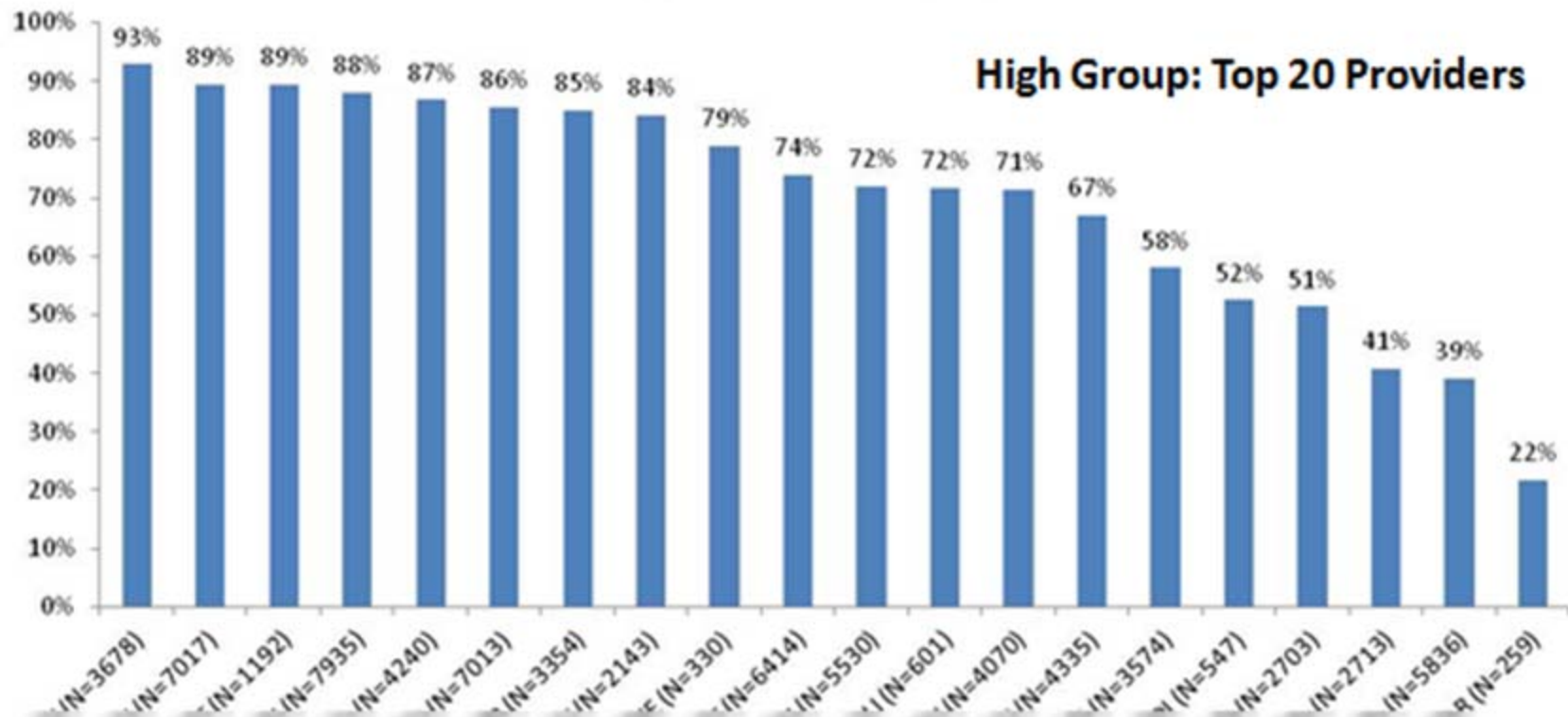


WBC	5.5	
	%	#
NE	54.7	3.0
LY	34.1	1.9
MO	7.5	0.4
EO	3.0	0.2
BA	0.7	0.0
RBC	4.28	L
HGB	9.7	L
HCT	29.9	L
MCV	69.7	L
MCH	22.6	L
MCHC	32.4	L
RDW	18.4	H
PLT	331	
MPV	8.8	

Percent Repeating Labs - MEDICAL CTR CBC, Met. Panel, Mg++,

Phos: April 2013 – March 2014

Potential for savings at 33% reduction: \$471,000

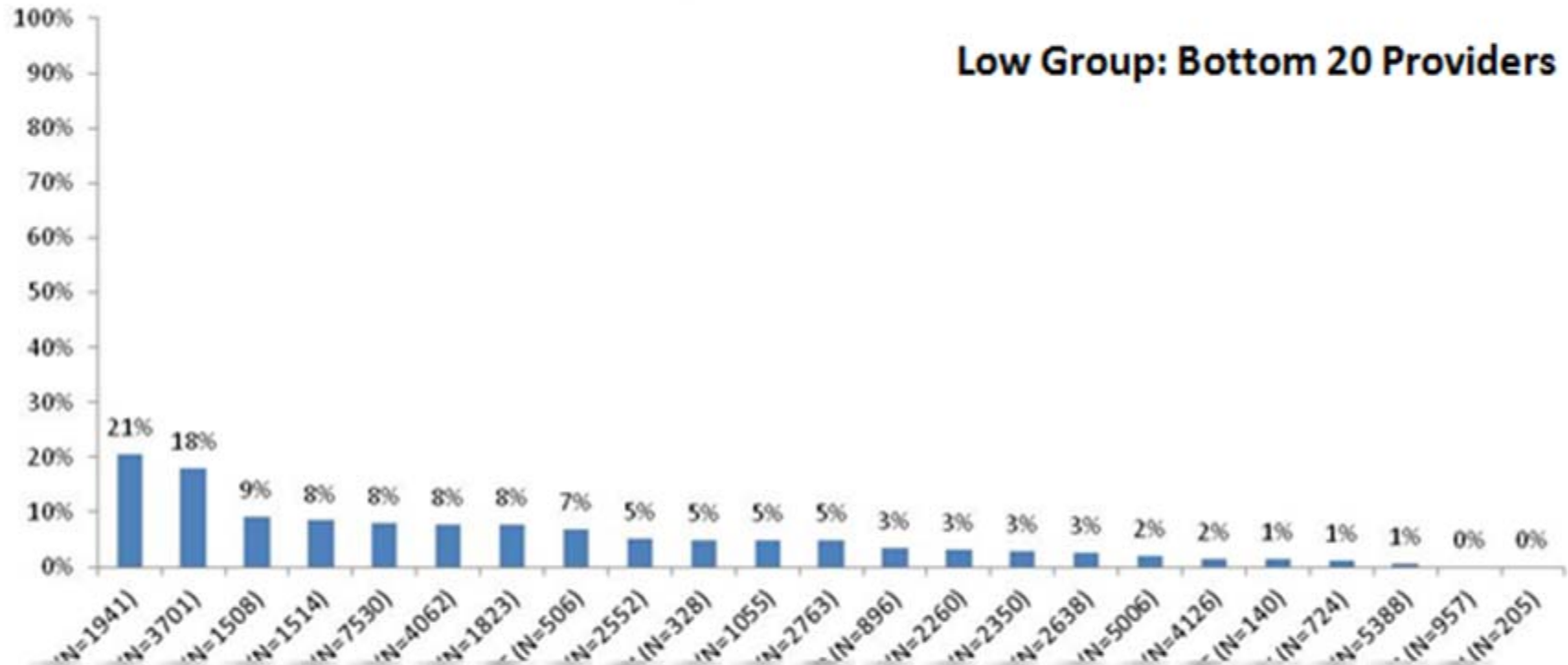


Percent Repeating Labs - MEDICAL CTR CBC, Met. Panel, Mg++,

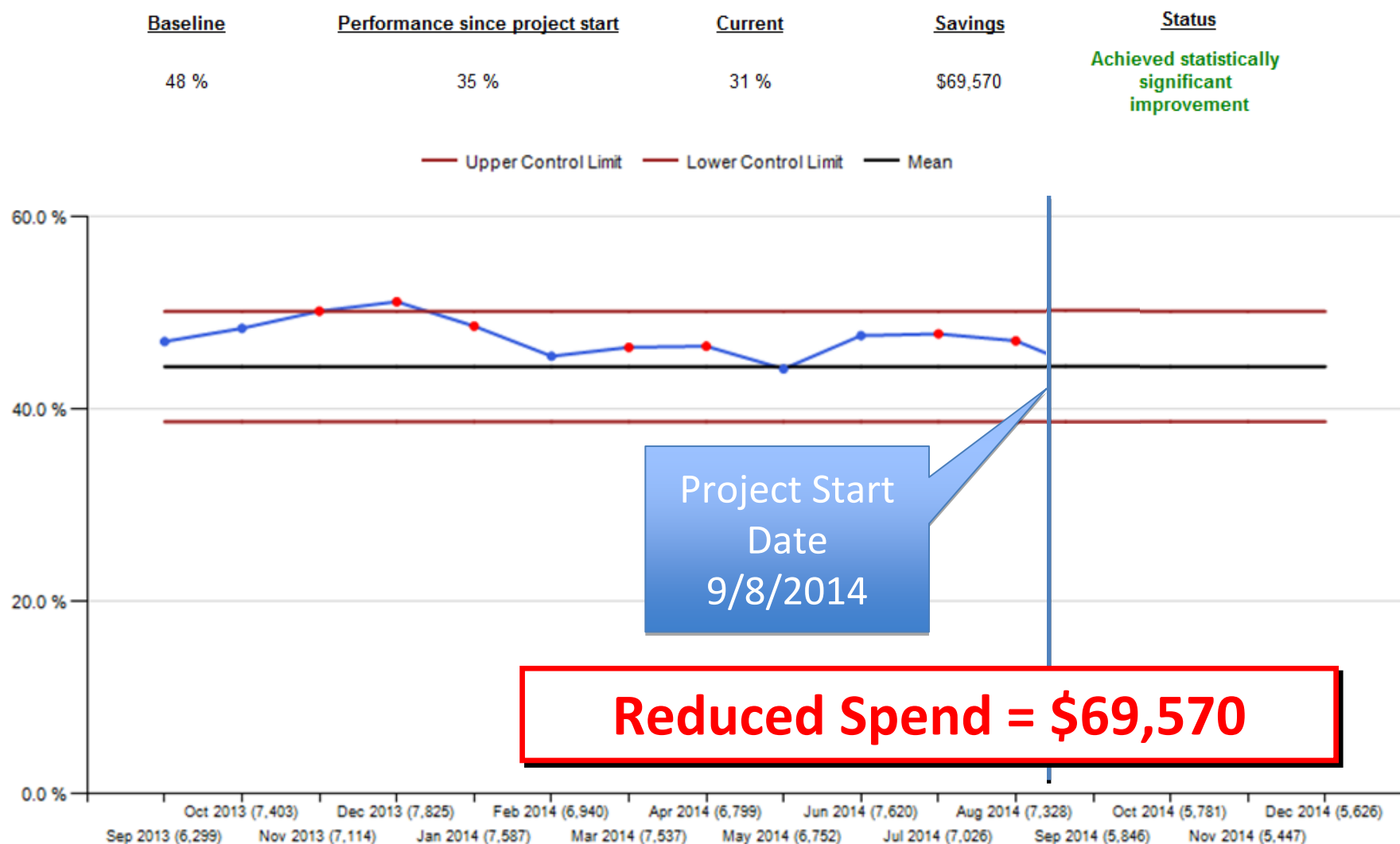
Phos: April 2013 – March 2014

Potential for savings at 33% reduction: \$471,000

Low Group: Bottom 20 Providers



Percent of Labs Ordered as Repeating



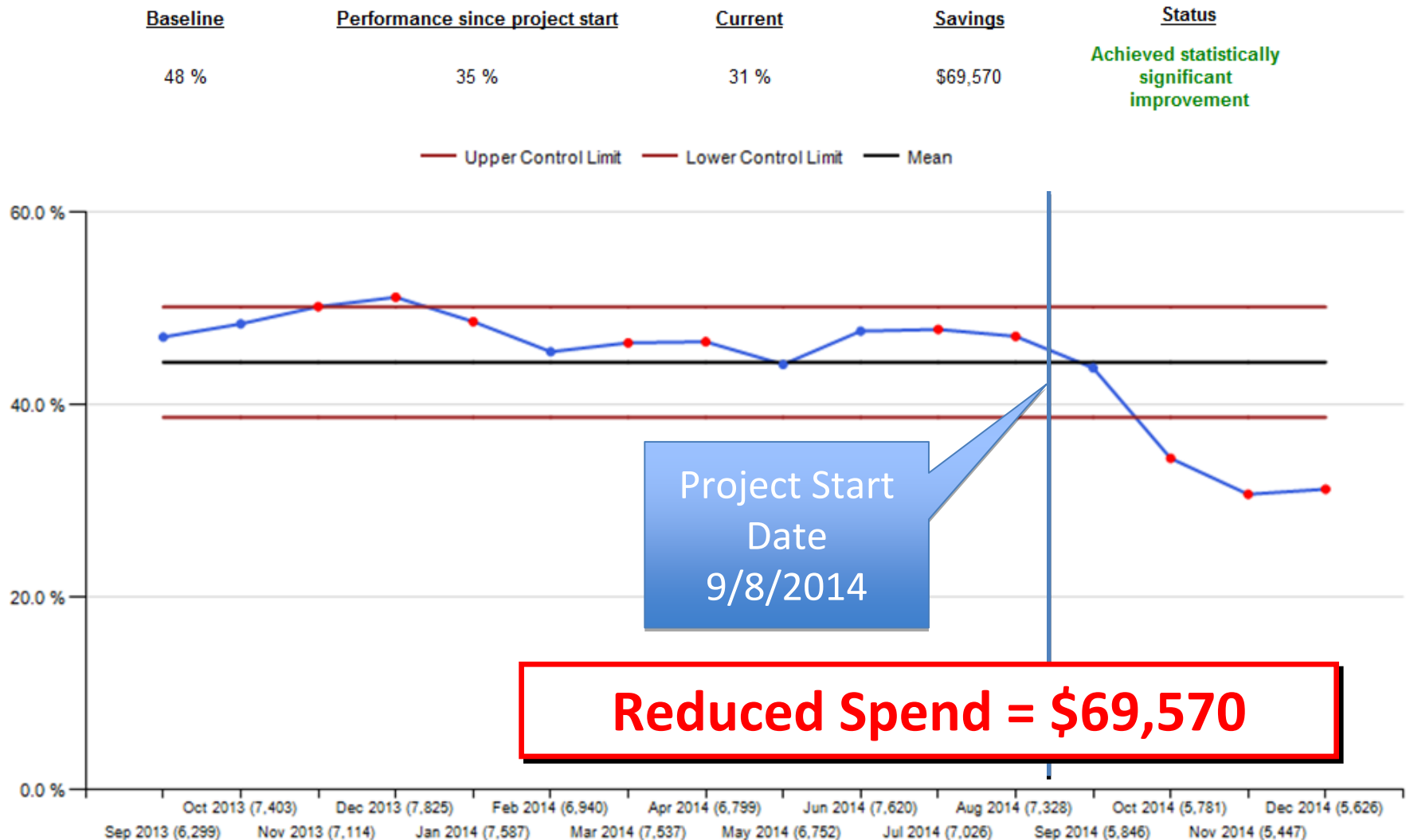
Measure criteria

Denominator: Count of four common labs (CBC/Met Panel) ordered in the measurement month by a participating hospitalist

Numerator: Of the results in the denominator, count those that were ordered as repeating

Prices displayed are not actual, but standardized.

Percent of Labs Ordered as Repeating



Measure criteria

Denominator: Count of four common labs (CBC/Met Panel) ordered in the measurement month by a participating hospitalist

Numerator: Of the results in the denominator, count those that were ordered as repeating

Prices displayed are not actual, but standardized.

Before/After Rate by Individual Doctor

PERCENT OF LABS THAT WERE ORDERED BY A HOSPITALIST AS REPEATING

Baseline

Performance since project start

Current

Savings

Status

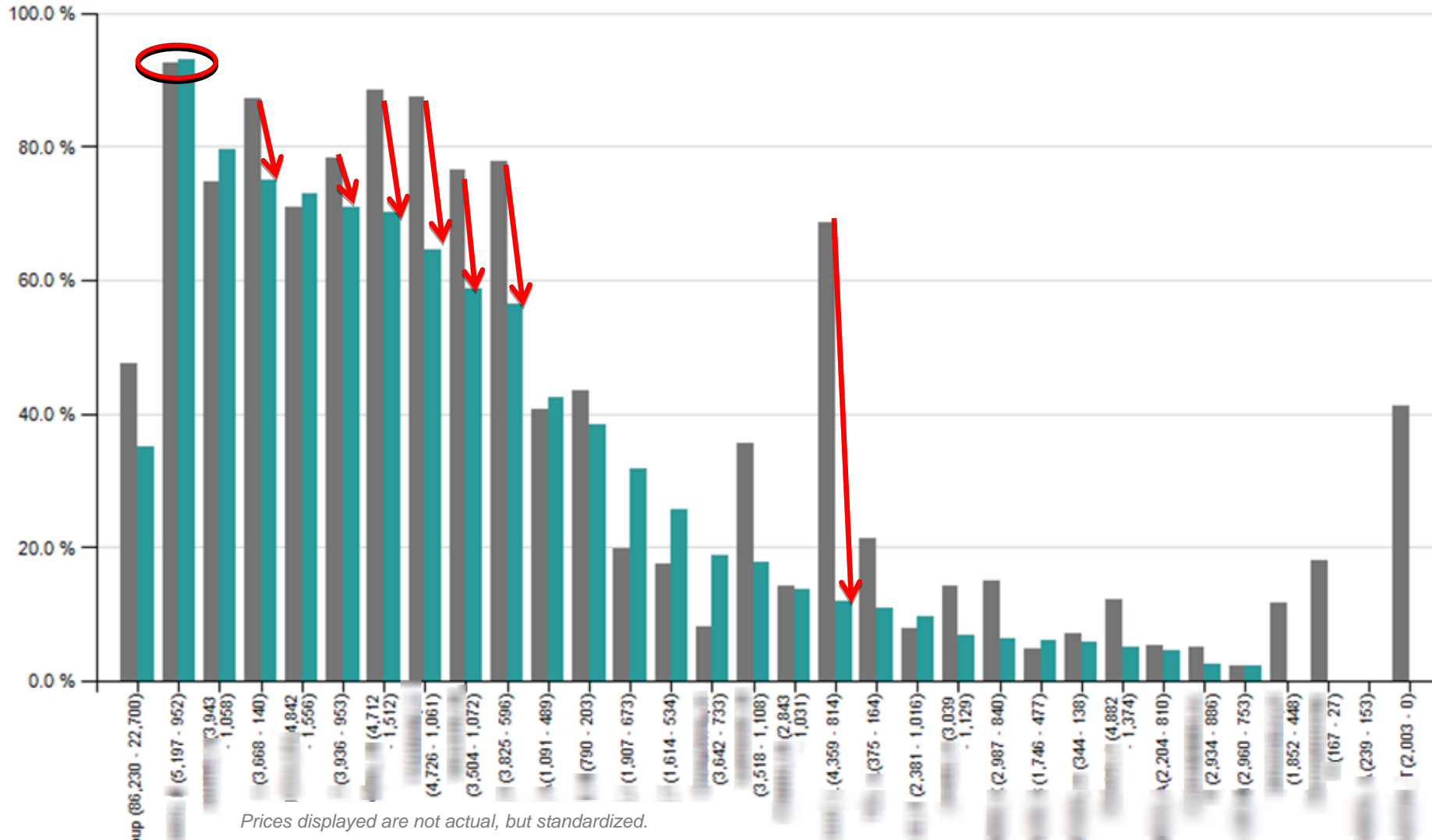
48 %

35 %

31 %

\$69,570

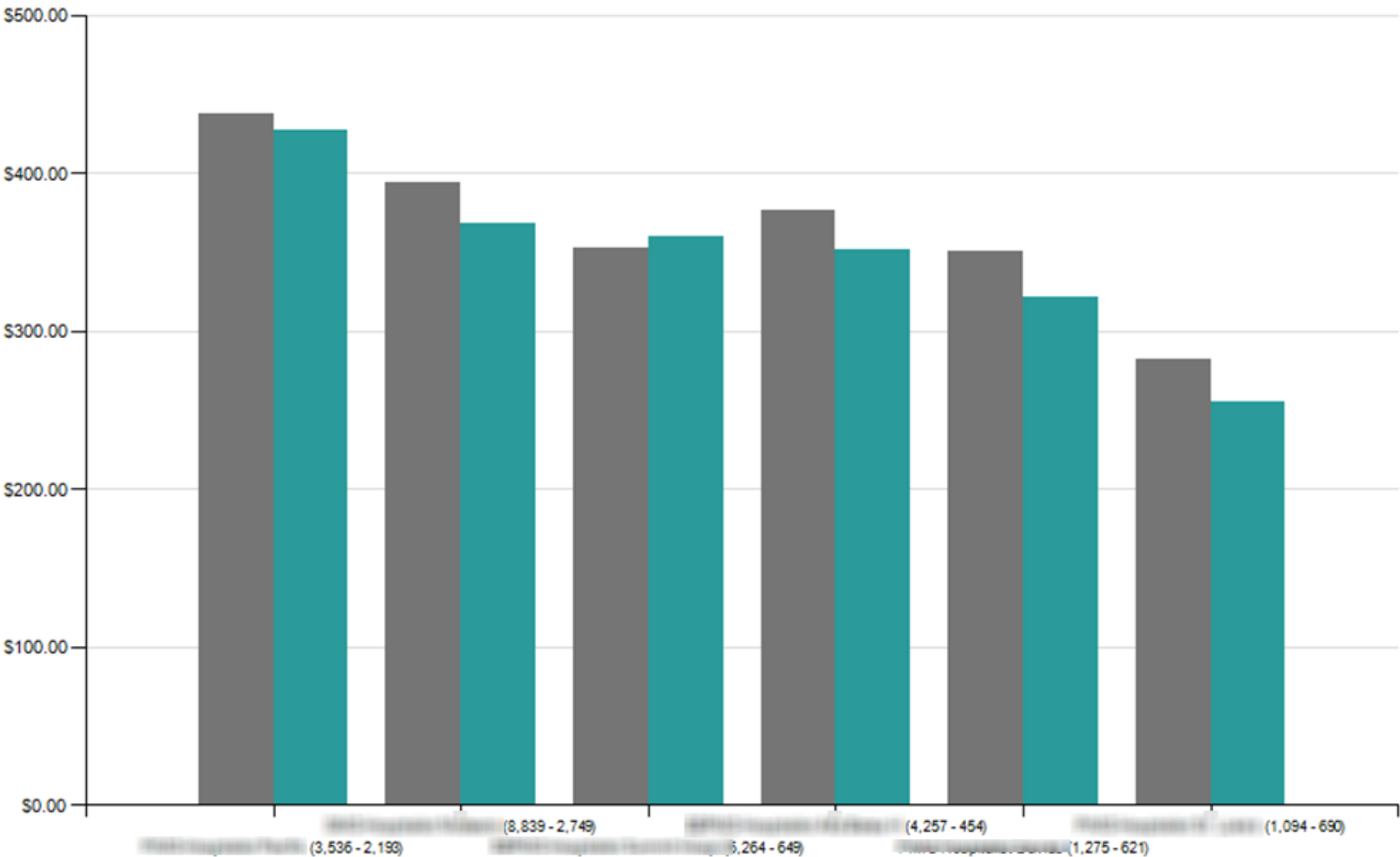
Achieved statistically significant improvement



Project Spread: 6 Hospitals in 4 months

AVERAGE COST PER DISCHARGE FOR FOUR COMMON LAB TESTS

Baseline	Performance since project start	Current	Savings	Status
\$394.05	\$368.74	\$389.22	\$69,570	Achieved statistically significant improvement



Hardwired solution: “repeat” button removed

Epic - Home Schedule In Basket Chart Enc Tel Enc Refill Orders Staff Msg Patient Msg My Reports Patient Station

EDD: 02/14/2... ABO: No Result Code: Inactive Att Prov:
GA: 35w6d GBS: No Result Allergies: Eggs - Ok As Ingredie... OB Prov:

Order Sets ? Actions

Order Sets click to open

Search + Add Advanced

ICU GENERAL ADMISSION

Right click on an Order Set to add to favorites

CBC with Automated Differential Routine Next Draw Accept Cancel

Routine, NEXT DRAW First occurrence Today at 1819

Priority: Routine Routine STAT Timed ASAP

Frequency: NEXT DRAW Next Draw Once Tomorrow AM

Starting: 1/16/2015 Today Tomorrow At 1819

First Occurrence: Today 1819

Scheduled Times: Hide Schedule

1/16/15 1819

Questions:

Prompt	Answer
1. PRN Reason	

Comments (F6): Click to add text

Manage Orders Rounding Direct Admit ED Admission Transfer



550 fewer blood draws since project start

For More Information

- Please contact:

Michael van Duren, MD, MBA

Vice President, Variation Reduction

(916) 402-7492

vandurenm@sutterhealth.org