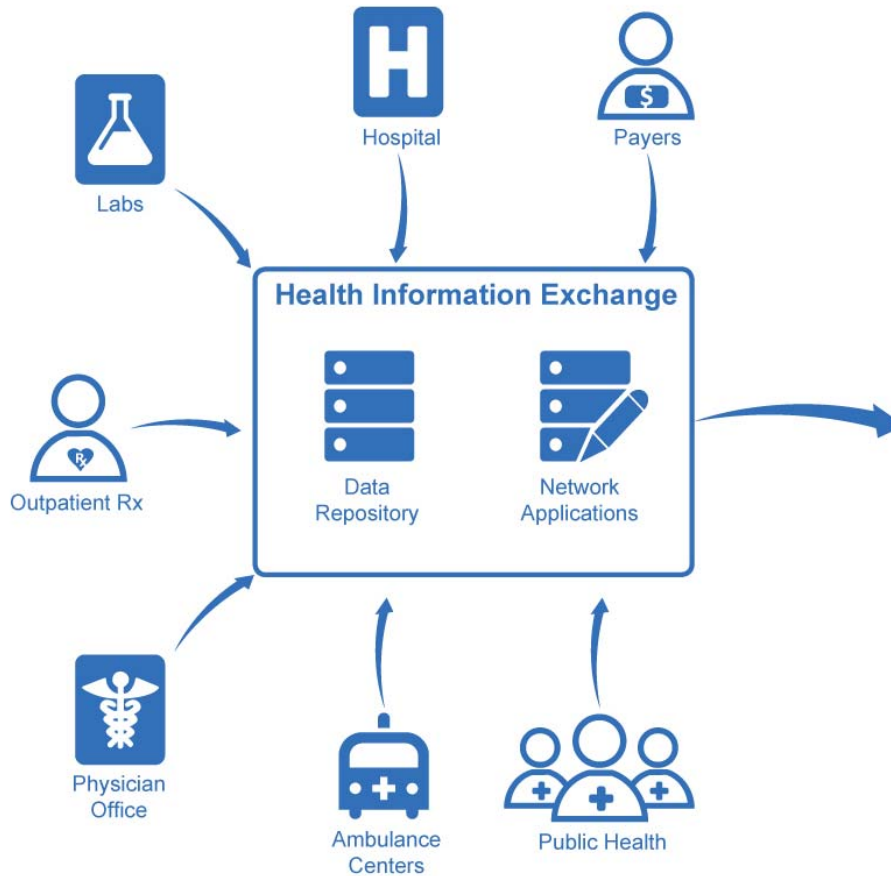
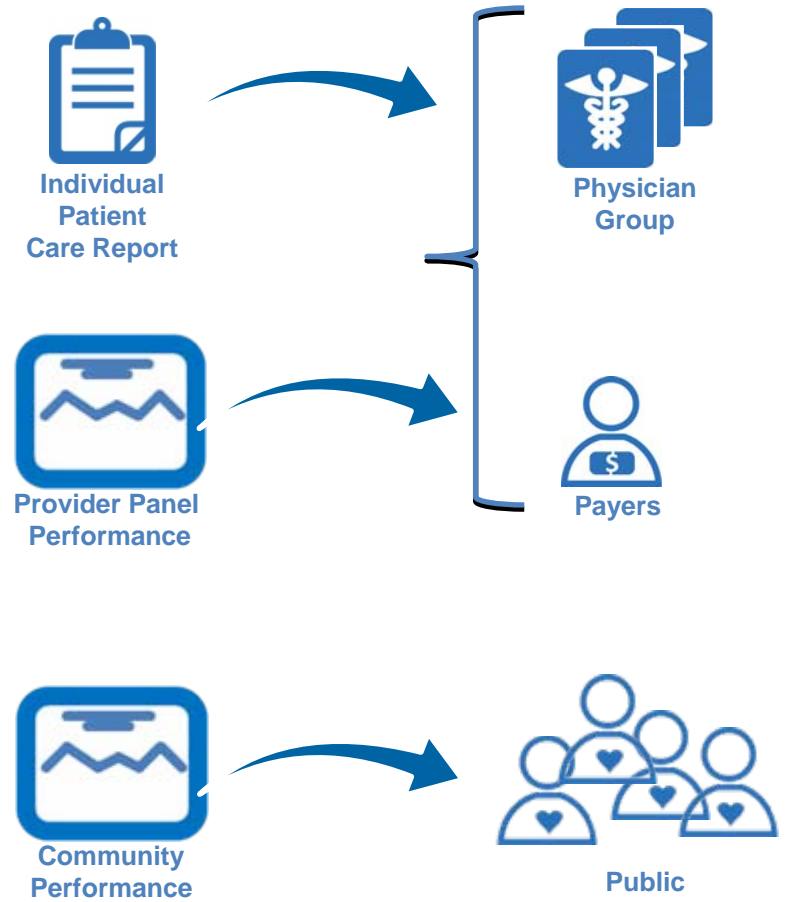


## Data Management

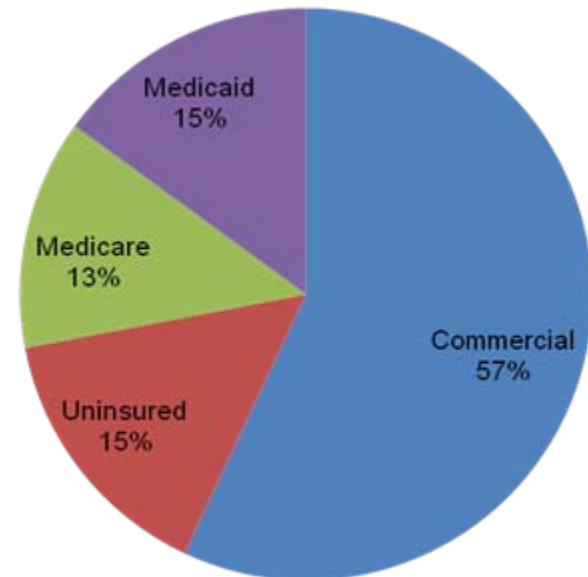


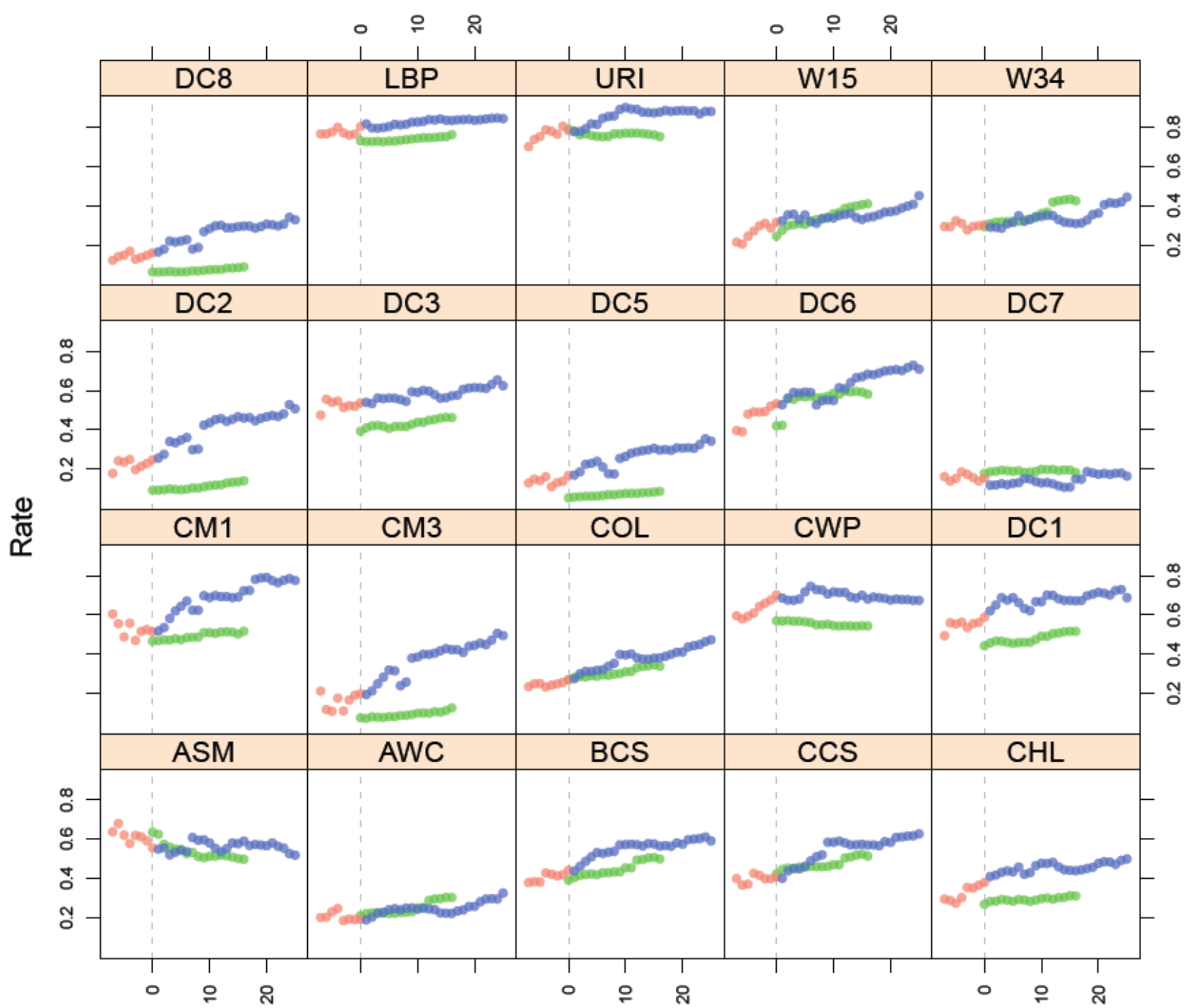
## Quality Health First®



# Overview of IHIE multi-payer program

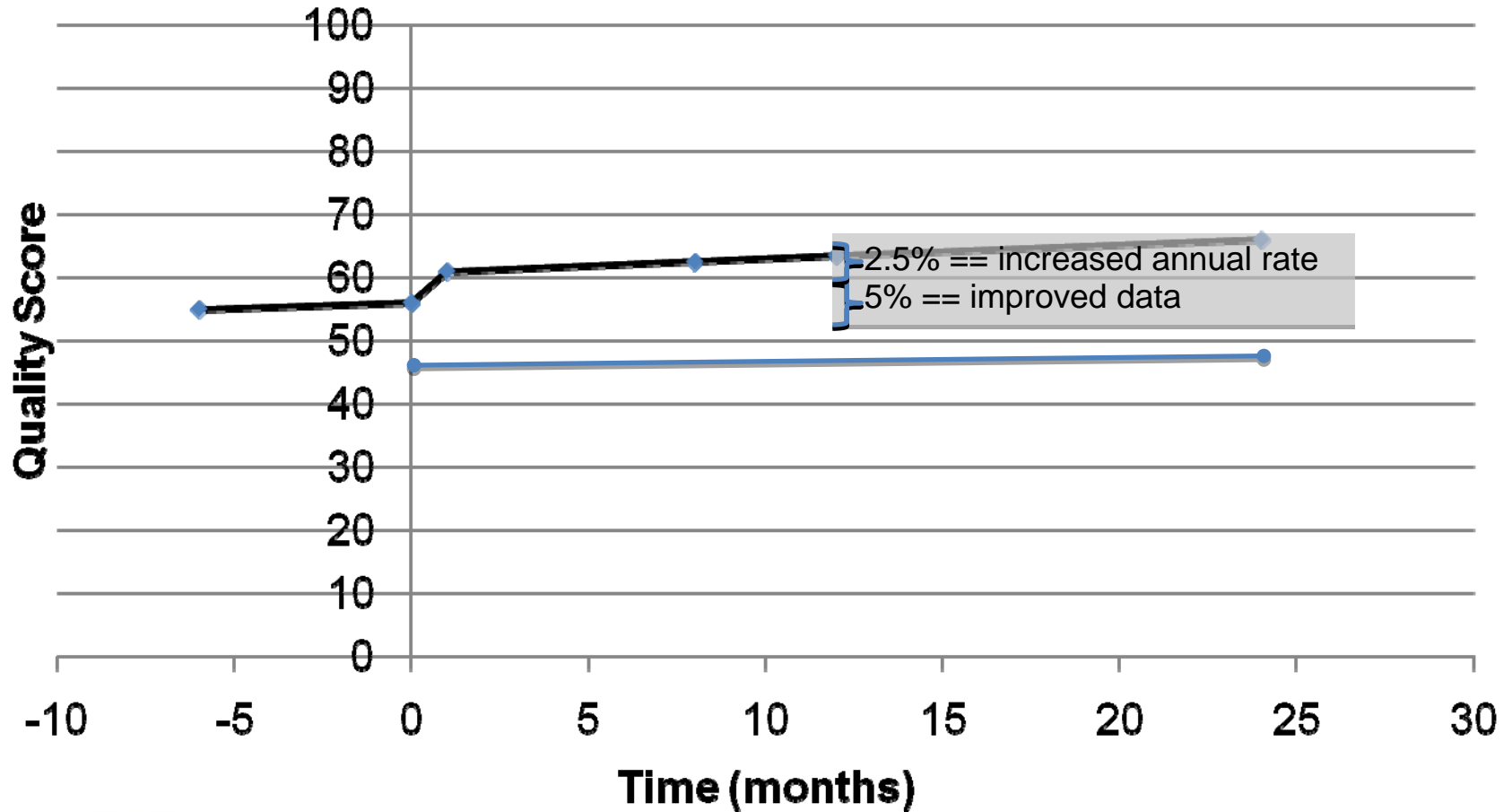
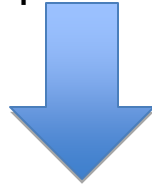
- Multi-payor, value-based pay-for-performance
- Payor participants include: Anthem BCBS, United Healthcare, Unified Group Services, Medicare, Medicaid
- Measures that matter
- Initially focused on preventive care, diabetes care, heart disease care
- Aligned incentives
- Help physicians identify and prioritize health screenings and other testing; provide early interventions and consistent support
- 20 hours CME credit annually
- Financial returns for improvement and achievement





# Mixed Model Results

Participation Starts



# Provider Impressions

Our practice elected to participate in the Quality Health First Program because of the standardized measurement of medical quality and outcomes across health plans. This comprehensive program gives us a practice-wide view of care needed for all of our patients, rather than just a segment of our patient population.

Sandy DeWeese,  
Southern Indiana Pediatrics,  
Bloomington, Ind.

find patients who are not  
ne services or chronic  
, we mail reminders or make  
ased on the reports.”

Health Center, Indianapolis, Ind.

Quality Health First Program, our  
a tool to complement the kind of detailed  
ruly identify gaps in care. The program is a  
our patients get the attention they need and

ian Gynecological Center, Mooresville, Ind.

