



A State DOH Perspective

Presented by

David W. Taylor, CIO
Director of Information Technology,
Florida State Department of Health

The Second Health Information Technology Summit
HIT Summit Day II, Session 5.02
September 9, 2005

Florida Department of Health

- Works within the state's overall annual budget of approximately \$2.2 billion
- Provides most of the state's public health services through partnerships between the state, district offices, and counties
- Consists of over 17,000 employees statewide
- Consists of:
 - 67 county health departments
 - 22 Children's Medical Services Offices with over 63,000 enrollees, including:
 - 57,000 enrolled in Early Steps
 - 39,000 enrolled in Early Steps Bureau of CMSN
 - Headquarters offices
- Provides services to over 1,200,000 clients annually
- Processes Disability Determination (DDD) Applications – over 254,000 processed in 2004-2005
- Provides a wide variety of services for the state including:
 - Disease surveillance
 - Health Promotion
 - Vital Records
 - Environmental Health
 - Radiation Control
 - Clinical Services
 - Disability Determination

In 2002, **President George W. Bush** issued an initiative – the Consolidated Health Informatics (CHI) initiative, designed to support the development of a National Health Information Infrastructure (NHII) within ten years.

In Florida, **Governor Jeb Bush** signed Executive Order Number 04-93 on May 4, 2004.

- Governor Bush established the Health Information Infrastructure Advisory Board to oversee the creation and promotion of a cohesive and workable plan for the development and implementation of a Florida Health Information Technology (HIT) system.
- Florida is charged with building a HIT infrastructure that will utilize the latest advances in information technology and network computing.

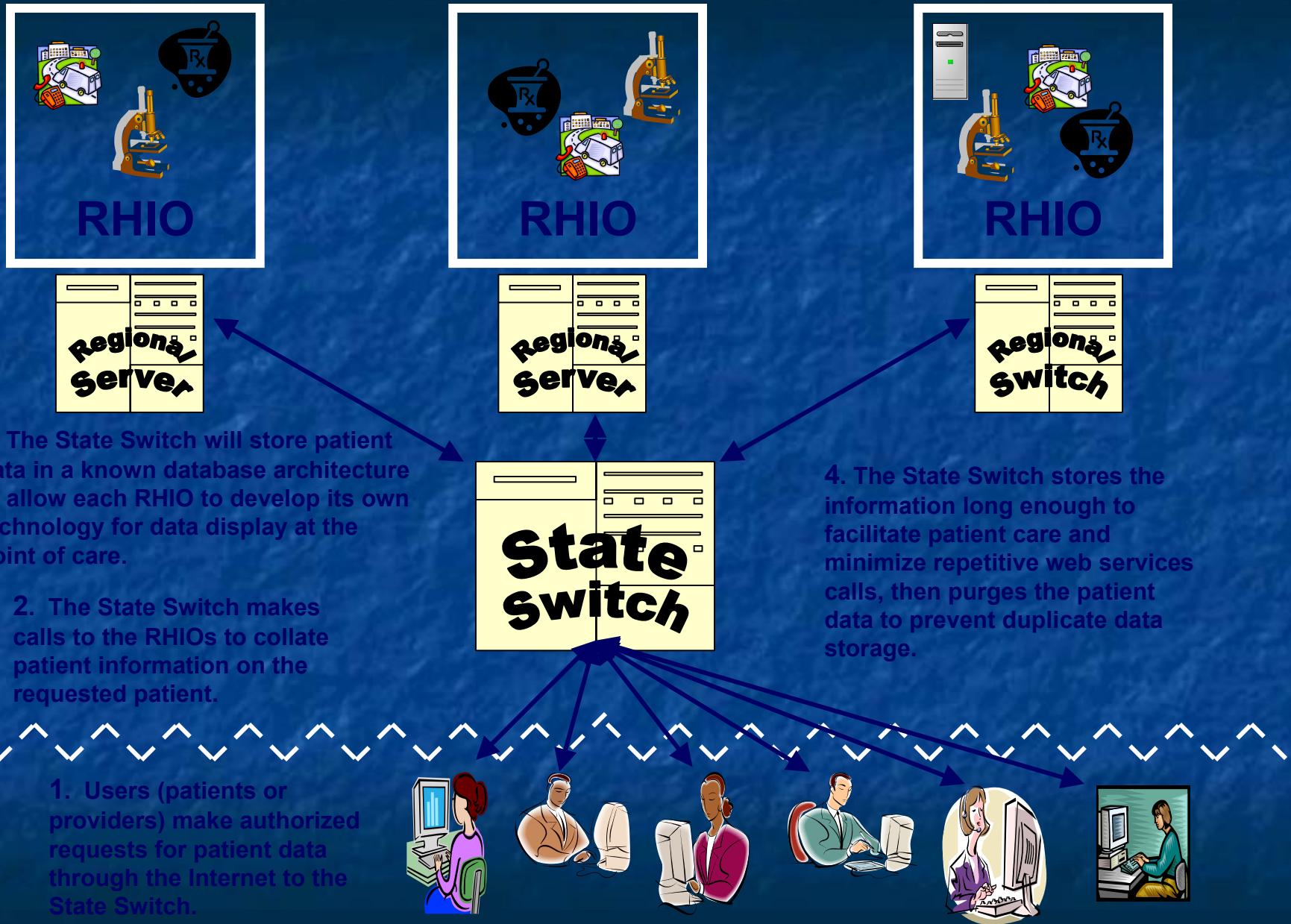
Implementation of a HIT system will help Florida:

- Address the issue of restricted patient access to comprehensive care management, health information, and medical records.
- Address the issue of limited availability and access to HIT for providers, particularly in rural settings.
- Identify key stakeholders and establish a Technical Advisory Panel (TAP).
- Identify and develop HIT components and architecture.

Florida's RHIO HIT Initiatives

- Florida is proposing the creation of a Florida Health Information Network (FHIN) to interconnect multiple health care markets across Florida.
- The FHIN will work with DOH to create a physician authorization and certification process that will ensure patient record confidentiality and HIPPA compliance.
- Each health care market contains a Regional Health Information Organization (RHIO), which has agreed to participate in the demonstration of health care data exchange across the FHIN.
- The Regional Server communicates using Web Services to send and receive data from the rest of the state.
- Each of the RHIOs are responsible for working with providers and connecting to those providers' databases to collect patient records.

Potential Workflow

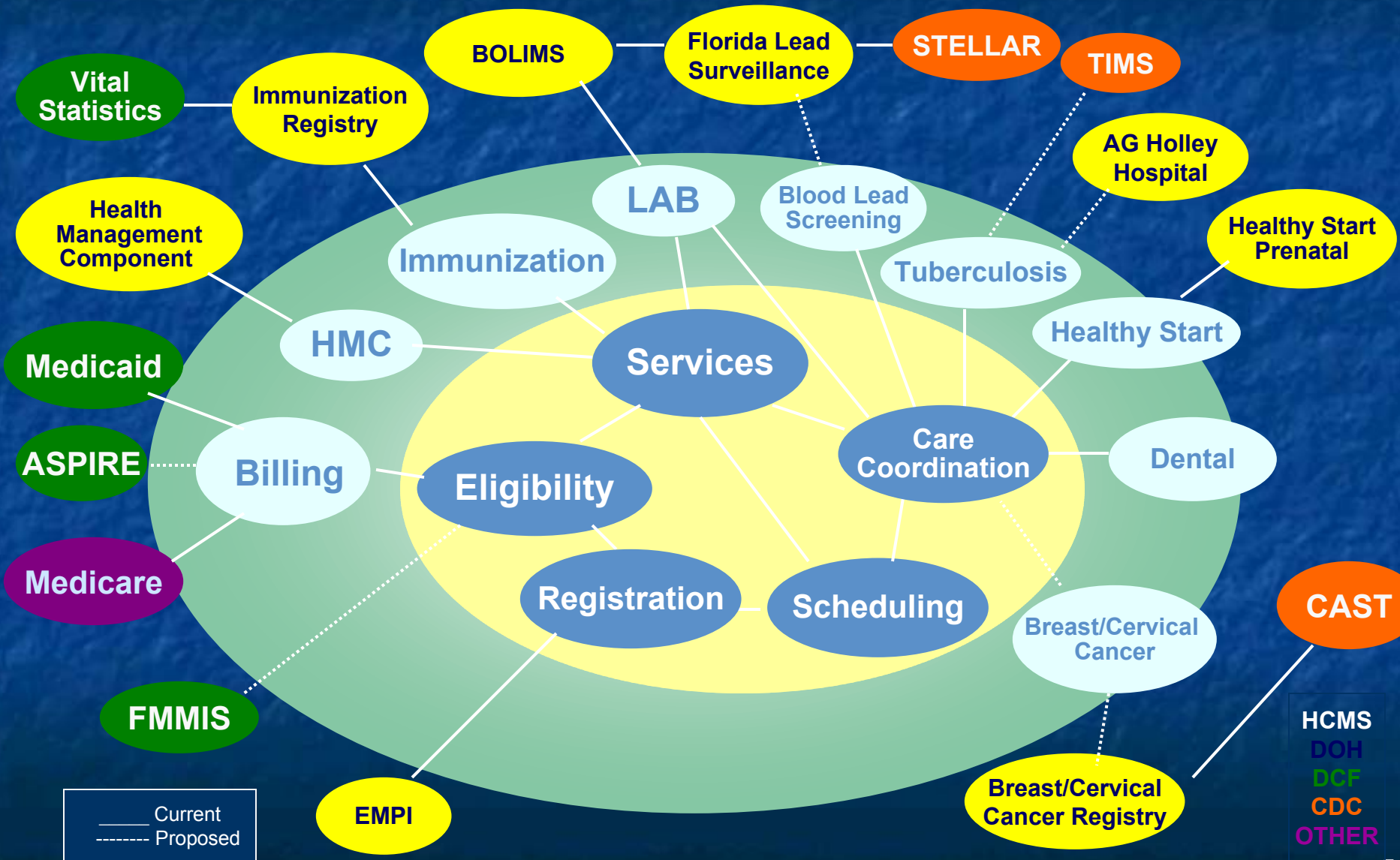


Health Management System (HMS)

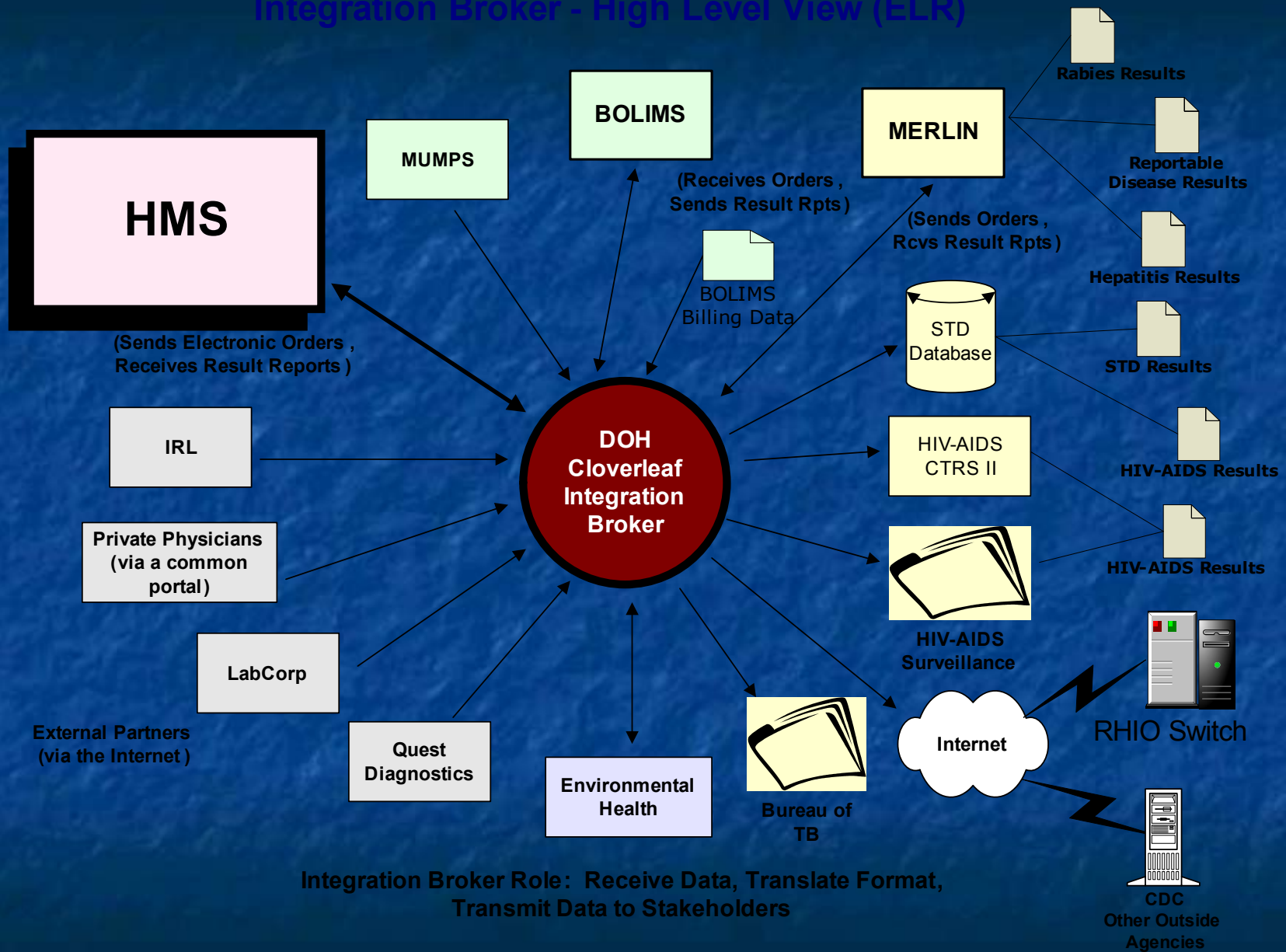
HMS is the department's enterprise clinic management system.

Current HMS services are offered in partnership with county governments and other local health care providers. These services provide a local mechanism for county health departments to track client and family services, including immunizations, adult and child primary health care, communicable diseases, and dental treatment. Designed to be transaction-based and to integrate data at the County Health Department (CHD) level, HMS also enables care coordination of services with other community health care partners such as the Healthy Start coalitions. Management reporting requirements are met as a byproduct of utilizing HMS to support daily business operations.

HMS Internal & External Interfaces



Integration Broker - High Level View (ELR)





For more information contact:

David W. Taylor

**CIO Director of Information Technology
State of Florida Department of Health**

850-245-4444, ext. 4060, or Suncom 205-4444, ext. 4060

President, NAPHIT

One Research Court, Suite 450

Rockville, MD 20850

301-216-3825

dtaylor@naphit.org