

# TRACK II: Medication Management — New Roles, New Players

## Part 2: A Community Pharmacy Model

Troy Trygstad PharmD MBA PhD

*VP, Pharmacy Programs*

*Community Care of North Carolina*

# Creating an Environment in which Community Based Care Coordination Thrives

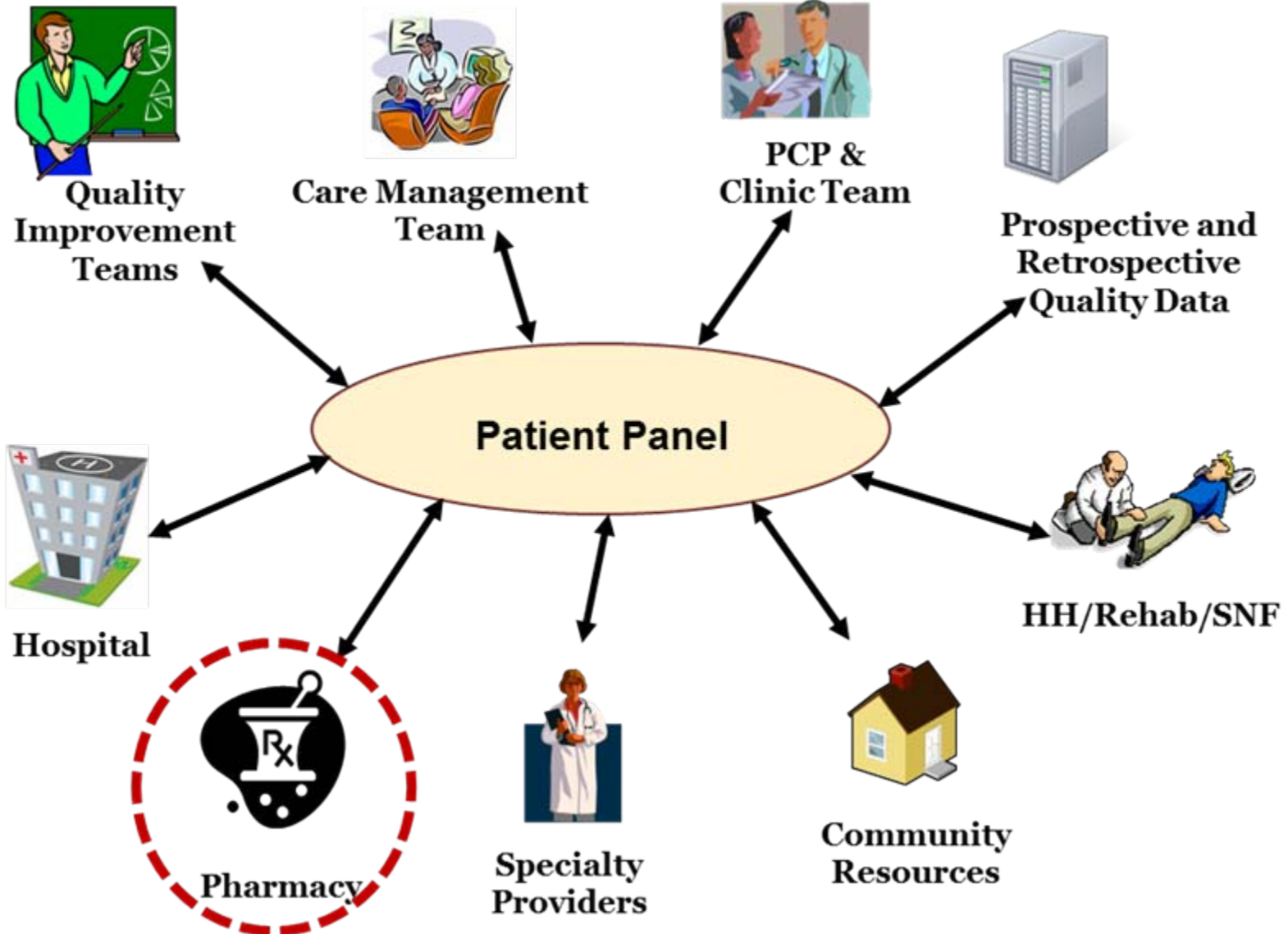


## Key Ingredients:

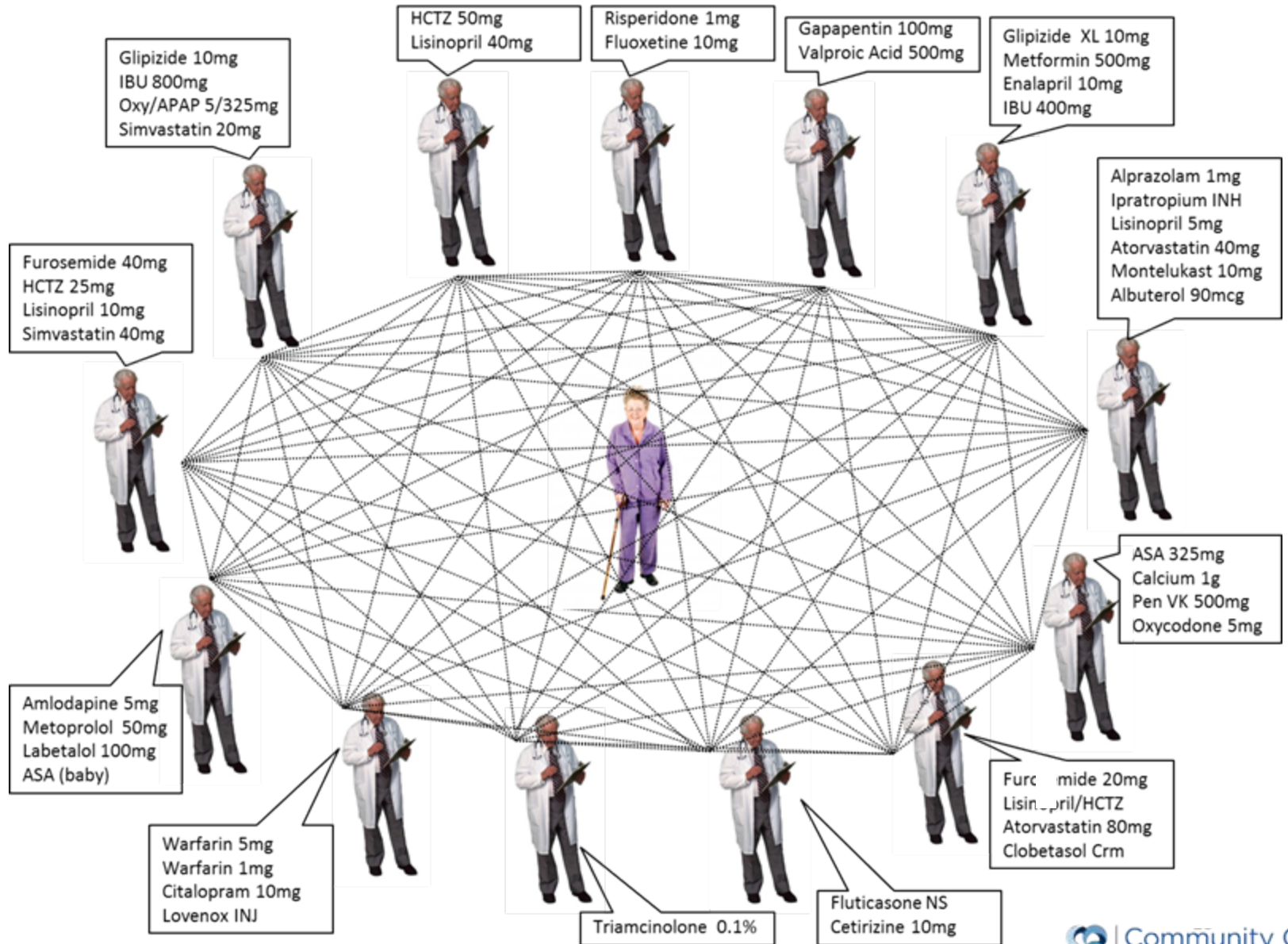
*#1 Patient Targeting & Shared Goals*

*#2 Meaningful Interpersonal & Inter-professional Relationships*

# What Does the Medical Neighborhood Look Like?



# The Challenge.



# Population Management is a Fundamentally Different Approach to Payment and Delivery

## Fee-For-Service



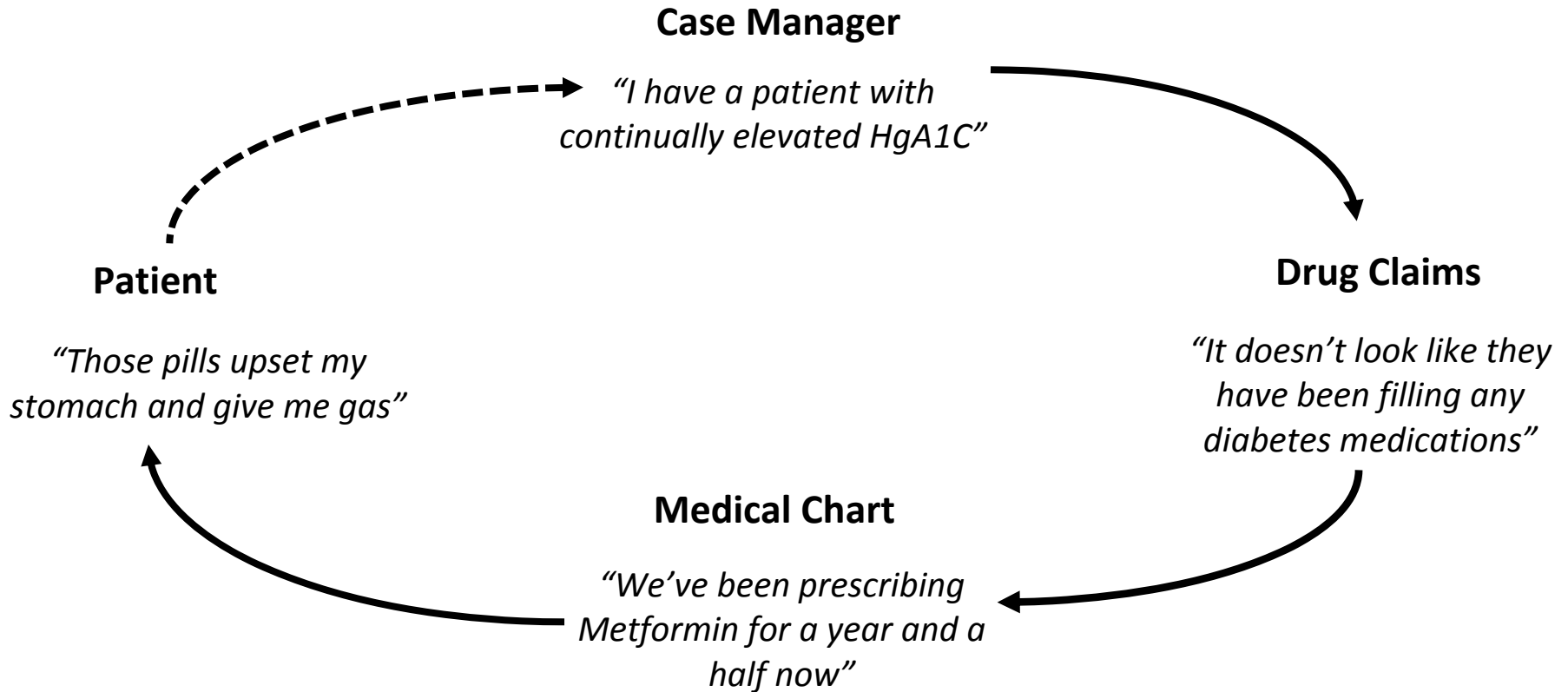
---

## Population Management



# Medication Optimization: A Team Sport

Example of an unmet treatment goal resulting from an adherence-related drug therapy problem



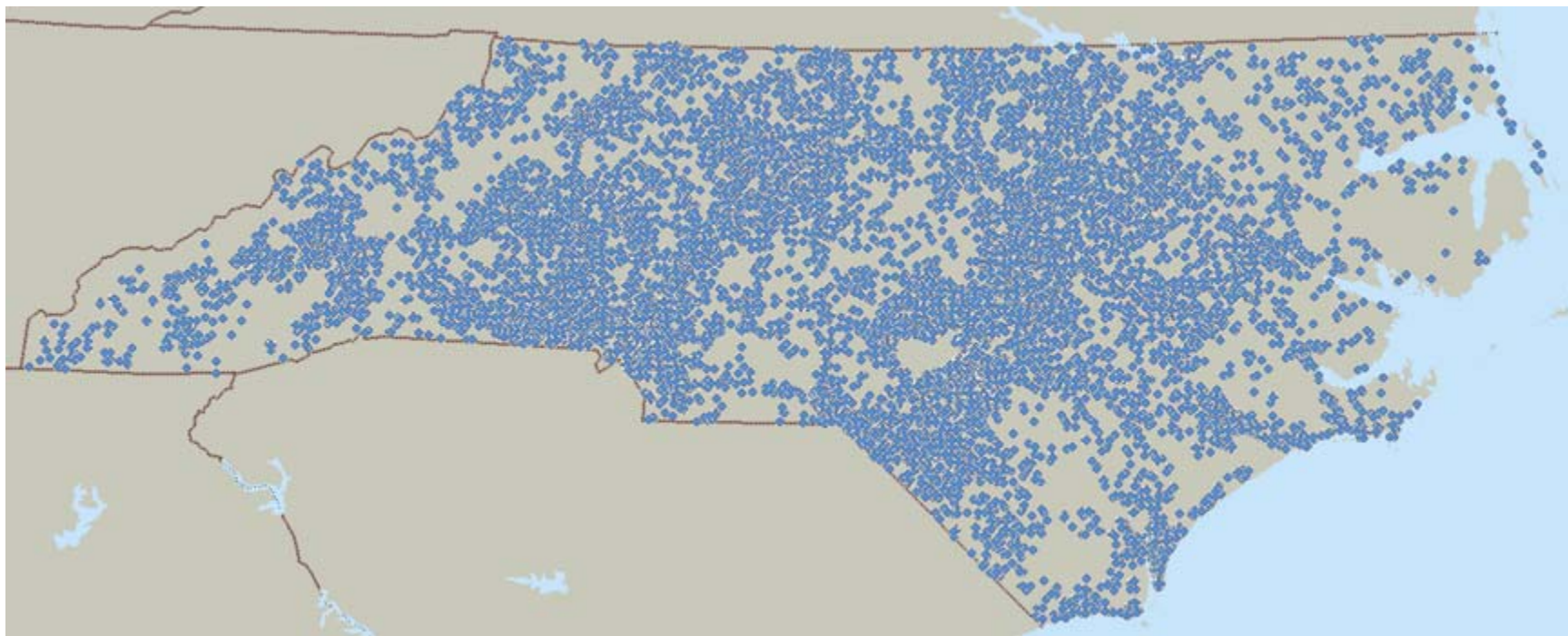
**Goal:** Create a *well-coordinated, goal-oriented, continually re-enforced drug use plan*



# How to Scale Medication Optimization Efforts?

*(with limited PCP, Care Manager time/effort/acumen/desire...)*

**>32,000 Individuals received CCNC Transitional Care Support in 2015**



# North Carolina CPESN<sup>SM</sup>

---

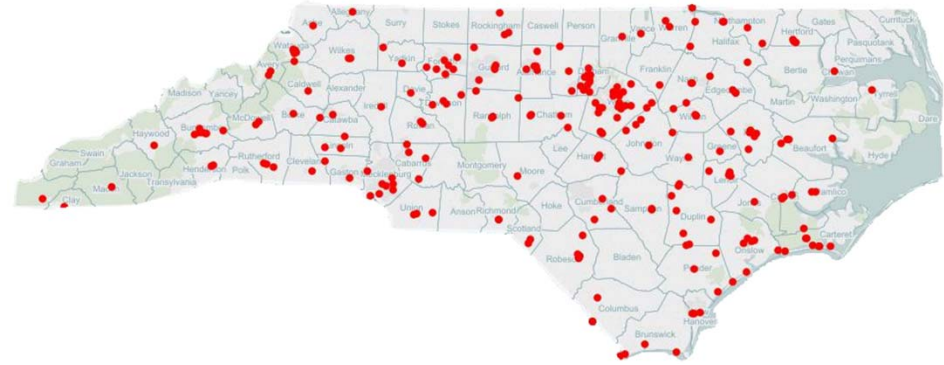
(Community Pharmacy Enhanced Services Network)

**Goal:** create a network of pharmacies who are willing to provide services and care coordination that *transcend* currently offered outpatient pharmacy program requirements / contracts.

This includes pharmacies that are willing and able to perform highly intensive, highly coordinated, and longitudinally-oriented medication optimization activities through a method of co-management with primary care providers, their care management teams, and the extended medical neighborhood.

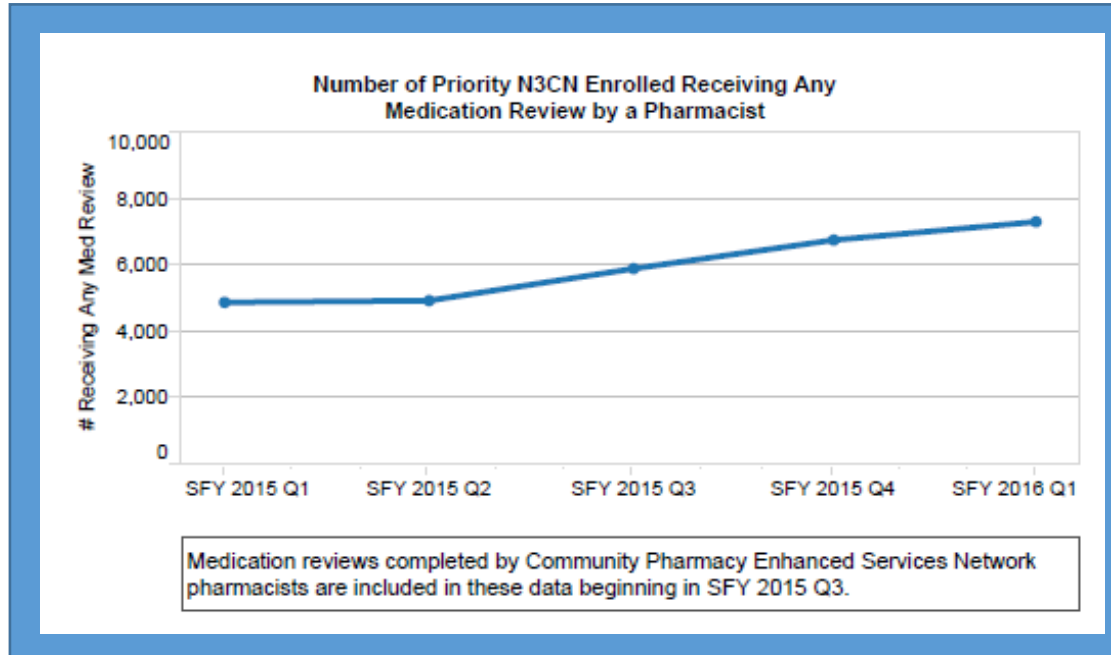


# The Community Pharmacy Enhanced Services Network (CPESN)



	CCNC Enrollees	CCNC Enrollees with total medical cost > \$10,000	Enrollees on CCNC Priority list	Enrollees on TC Priority list	Enrollees on Medication Management Priority list
Total number of members	<b>1,348,229</b>	112,529	17,753	153,241	6,377
Total medical cost	\$ <b>4,078</b>	\$ 27,527	\$ 23,813	\$ 18,215	\$ 25,345
# of Inpatient visits	<b>0.11</b>	0.52	1.41	0.45	1.04
Inpatient costs	\$ <b>369</b>	\$ 3,464	\$ 5,337	\$ 2,924	\$ 6,456
# of mental health inpatient visits	<b>0.01</b>	0.04	0.04	0.04	0.04
ED visits	<b>0.67</b>	1.65	2.94	1.74	3.05
ED cost	\$ <b>178</b>	\$ 745	\$ 1,262	\$ 816	\$ 1,657
Outpatient visits	<b>4.30</b>	9.43	12.04	8.70	12.28
Mental health outpatient visits	<b>0.62</b>	1.88	1.04	1.53	1.14
PCP visits	<b>2.09</b>	2.91	2.53	2.65	3.52
<b>Pharmacy visits</b>	<b>4.97</b>	<b>19.63</b>	<b>16.95</b>	<b>23.05</b>	<b>35.03</b>
Pharmacy costs (Pre Rebate)	\$ <b>721</b>	\$ 5,177	\$ 3,342	\$ 4,298	\$ 6,183

## “Shared Metrics”



## “New Findings, New Target Populations”

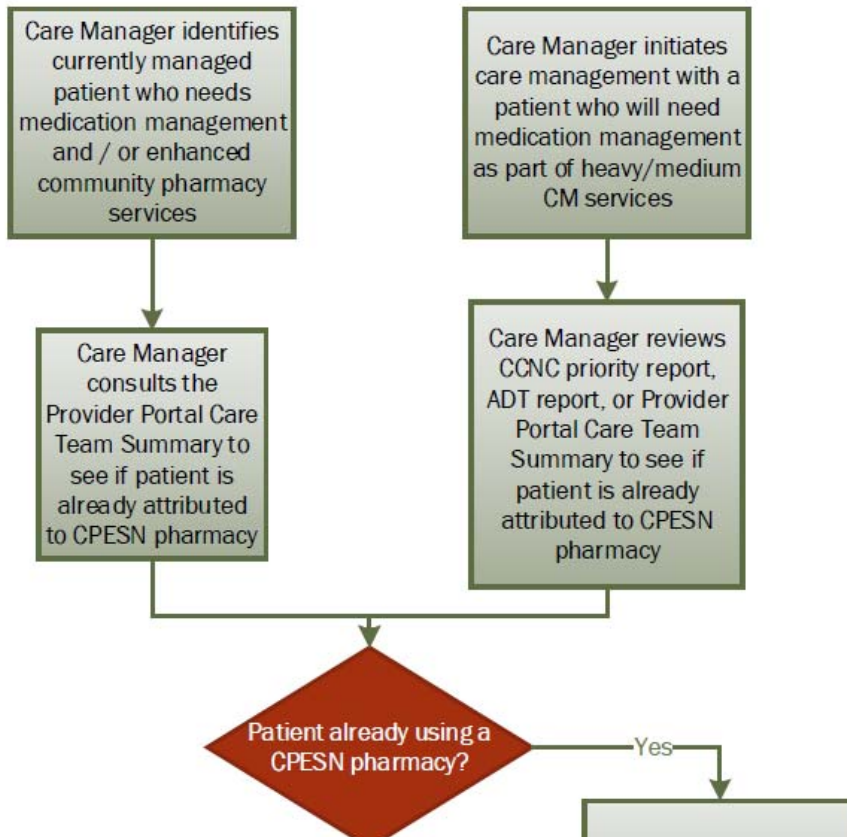


Attribution Group	Num_Patients	IP_PMPM	IP_PMPM_Expected	IP_Index	ED_PMPM	ED_PMPM_Expected	ED_Index
CPESN	26,800	0.014521	0.017911	0.81073	0.1044	0.11628	0.89782
Non-CPESN	362,904	0.012342	0.013229	0.93296	0.09148	0.10482	0.87276
Other	50,466	0.025947	0.023872	1.08693	0.14165	0.12176	1.16336

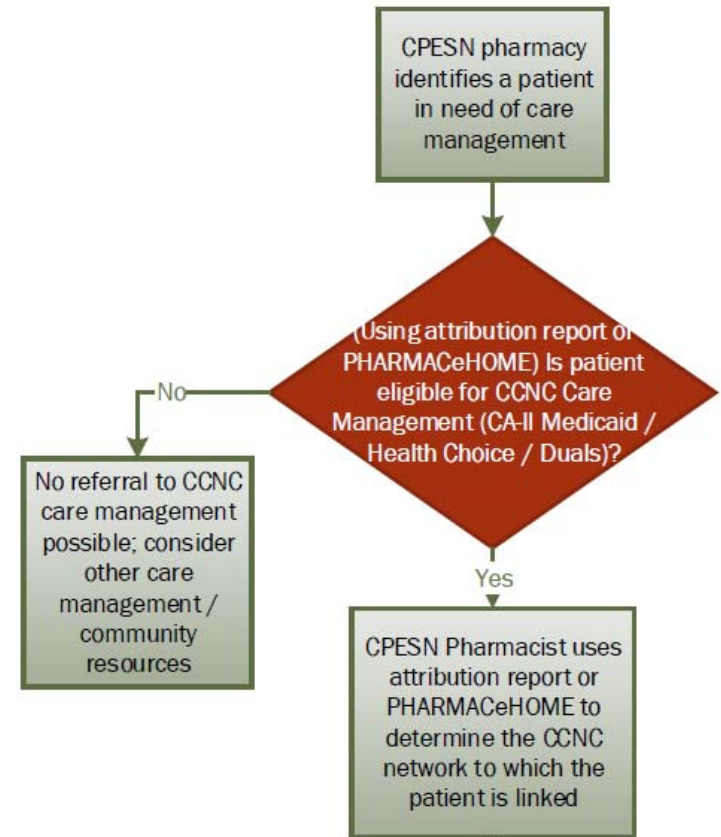
# North Carolina CPESN<sup>SM</sup>

## (Example Referral Process-Ways of Working)

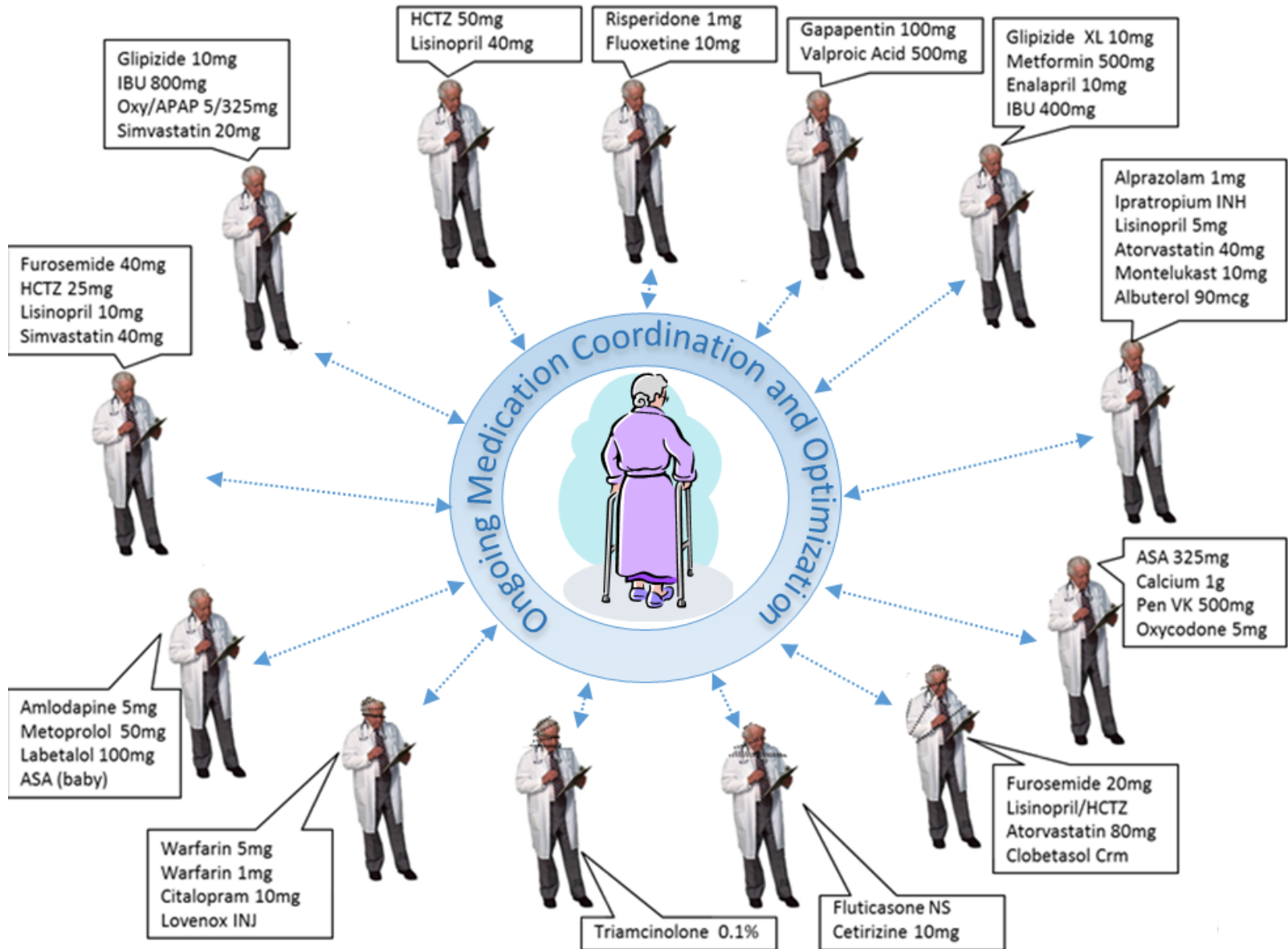
### Initiation of Co-Management/Referral CCNC Care Manager → CPESN Pharmacy



### Initiation of Co-Management/Referral CPESN Pharmacy → CCNC Care Manager



# Challenge Solved.



---

# Questions?

[troy@t2email.com](mailto:troy@t2email.com)