



CENTER FOR IMPROVING
VALUE IN HEALTH CARE

Consumer Engagement in Price/Quality Transparency

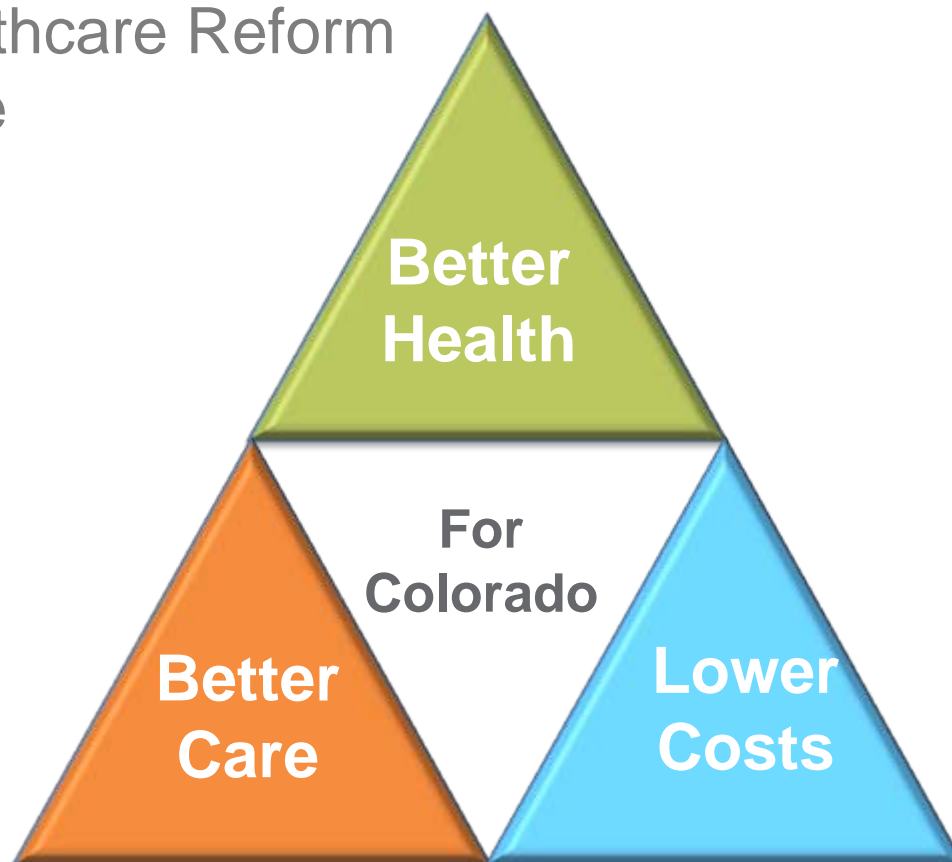
P4P Conference
San Francisco, CA
March 2-4th 2015

Tracey Campbell, VP Strategy & Business
Development

Higher Quality. Lower Cost. A Healthier Colorado.

Who We Are

- Non-profit, non-partisan organization
- Founded out of recommendation from Blue Ribbon Commission on Healthcare Reform and Governor's office
- Triple Aim Mission:



What We Do

We help Colorado:



Drive



Deliver



Buy

Value in Health Care

How We Do It

DATA



- We administer the Colorado All Payer Claims Database, the state's most **comprehensive source** of health care cost, quality and utilization claims data.



CONSULTING

- We **unlock information and insights** that guide how health care gets delivered, used and paid for.



CONNECTING

- We **bring together** organizations and individuals who share our cause, to **design and drive collective change**.

Colorado APCD Data & Covered Lives



Medicaid



**Medicare &
Medicare
Advantage**



***20 Largest
Commercial
Payers**



330 Million

**Medical & Pharmacy
Claims**



3.5 Million

Unique Lives



65% of

Insured Coloradans

Medicaid, Medicare Advantage and commercial payer claims currently encompass 2009-2014 adjudicated claims. Medicare currently includes 2009-2011 claims. Covered lives estimates based on 2013 Colorado Division of Insurance Health Cost Report dated December 8, 2014.

*Commercial claims in the APCD do not currently include self-funded lines of business.

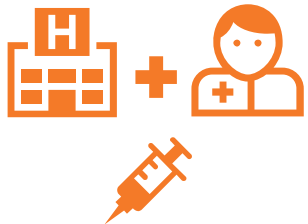
Updated January 2015



What's Different About [comedprice.org](https://www.comedprice.org)?



Prices based on *actual payments*, not charges



Prices include payments for the entire health care service (hospital, physician, lab, etc.)


Medicaid &
Commerical Claims



Prices represent median amounts paid by 20 private health insurance payers & Medicaid



July 2014 Price/Quality Launch





[Home](#)

[Medical Service Prices](#)

[State Costs & Utilization](#)

[About CIVHC](#)

ADMINISTERED BY  CIVHC
POWERED BY  TREQ 3.0

Find Prices for Medical Services

Search for comprehensive prices for select hospital-based services.

Step 1
Service

Step 2
Location

Step 3
Insurance

Your selected search criteria will appear here.

Select a Medical Service

What type of service are you searching for?

Select a Category...

Maternity Care

Surgical and Other Services

Next

Find Costs and Utilization by Geography

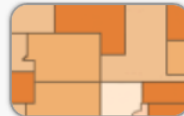
Search for health care costs and utilization of services by county and ZIP Code 3.

Choose one of the most viewed selections.

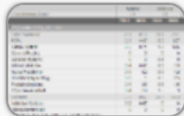
- Total Cost of Care (TCC)
- TCC Compared to Expected (C2E)
- Percent Generic Scripts
- 30 Day All Cause Readmissions (per population)
- ER Visits
- Diabetes Prevalence
- Asthma Prevalence
- Illness Burden

Total Cost of Care

represents the total dollars paid for all health care services received by an individual such as hospital, clinic, physician visits, and prescription costs. Amounts paid by both the insurer and by the individual in the form of copays, deductibles and other cost sharing mechanisms are included. The results are displayed as a total dollars per person for the year. The rate represents the population living in that geography, not where the services were received.



View Map

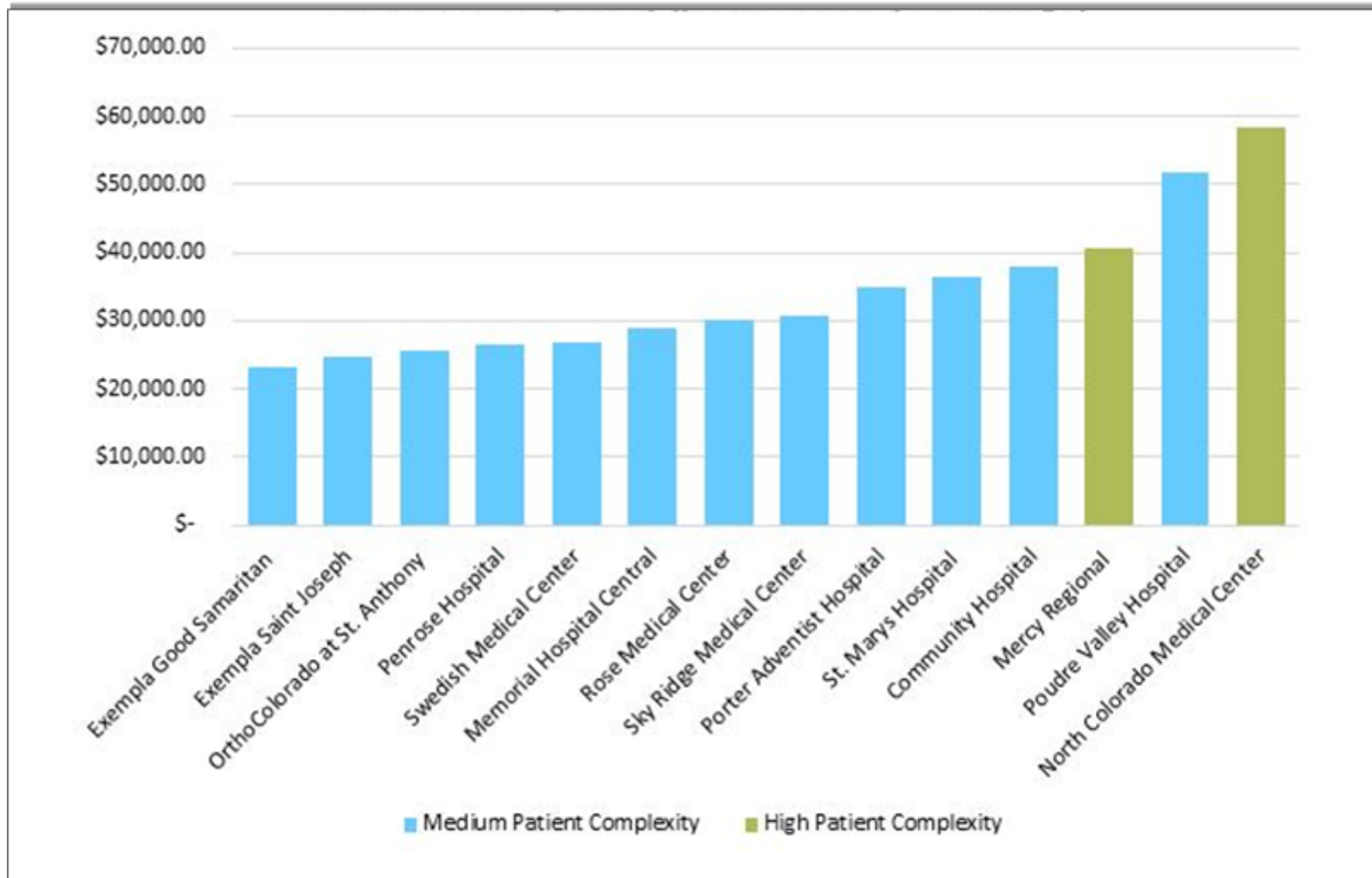


View Report

[View all Maps or Reports](#)



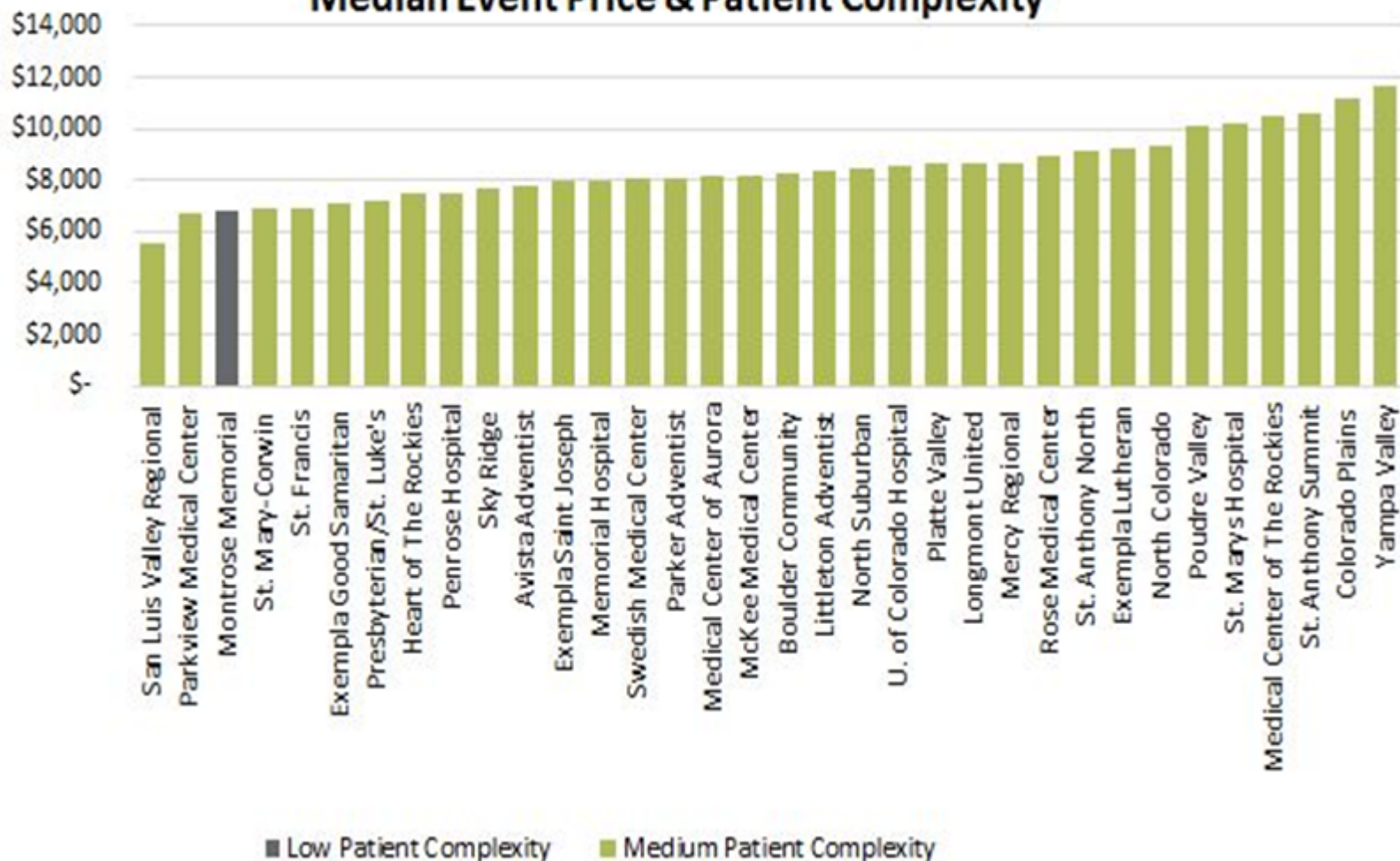
Knee Replacement Median Price & Patient Complexity (Commercially insured, < 65 years of age, comedprice.org)



For all facilities displayed, including Good Samaritan and St. Joseph Hospital, prices reflect median payments made by health plans and patients. These payments include facility, physician and ancillary payments. Prices reflect 2012 data available on www.comedprice.org.



Commercially Insured Vaginal Birth: Median Event Price & Patient Complexity



For all facilities displayed, including Good Samaritan and St. Joseph Hospital, prices reflect median payments made by health plans and patients. These payments include facility, physician and ancillary payments. Prices reflect 2012 data available on www.comedprice.org.



Future Plans – Consumer Site

Timeline	Facility/ Provider Types	Health Care Services (Prices by name facility)	Payers	Year Represented
<p>Planned for 2015</p>	<ul style="list-style-type: none"> • Ambulatory Surgery Centers • Endoscopy Centers 	<ul style="list-style-type: none"> • Emergency Room Visits • Knee Arthroscopy • Breast Biopsy • Skin Lesion Removal • Gall Bladder Removal • Hernia Repair • Kidney Stone Removal • Tonsillectomy • Colonoscopy 	<ul style="list-style-type: none"> • Additional display of Medicare prices 	<ul style="list-style-type: none"> • 2013
<p>Planned for 2016</p>	<ul style="list-style-type: none"> • Imaging Centers • Physician Groups 	<ul style="list-style-type: none"> • Imaging Services (CT Scans, MRIs, Ultrasounds, X-Rays) • Annual preventive visits • Various types of primary care visits including new patient and mild to moderate complexity exams 	<ul style="list-style-type: none"> • Self-funded claims added 	<ul style="list-style-type: none"> • 2014





Non Public Release of APCD Data

- Site Demo: www.comedpriceshowcase.org





HCPF Scholarship Fund

- \$500,000 in funding available
- Eligible organizations include non-profits and research organizations with annual revenues of less than \$5 million per year and state agencies
- Funding available through June 2015
- Six projects have been awarded as of January



Contact Information

- Tracey Campbell, VP of Strategies & Business Development
tcampbell@civhc.org

Stay Connected!

- Join our email list (from the www.comedprice.org or www.civhc.org home page)
- Follow CIVHC on social media:



@CIVHC_News



Facebook.com/CIVHC



LinkedIn (linkedin.com/company/2096991)

