



Clinical Data Sharing: Improving Population Health and Supporting Payment Reform

Cindy Munn

Chief Executive Officer

Louisiana Health Care Quality Forum

- Private, not-for-profit organization
- Established after Hurricanes Katrina and Rita in 2007
- Provides for a statewide public-private partnership dedicated to improving the quality of health & health care
- State-designated entity for health IT

Louisiana's Challenges

- **State health rankings**
 - 48th in health outcomes (*Source: United Health Foundation*)
 - 16th in per capita health costs (*Source: La. DHH*)
- **Rural state**
 - 68.2% of state identified as rural (*Source: USDA*)
 - 31% of state population lives in Health Professional Shortage Area (*Source: La. DHH*)

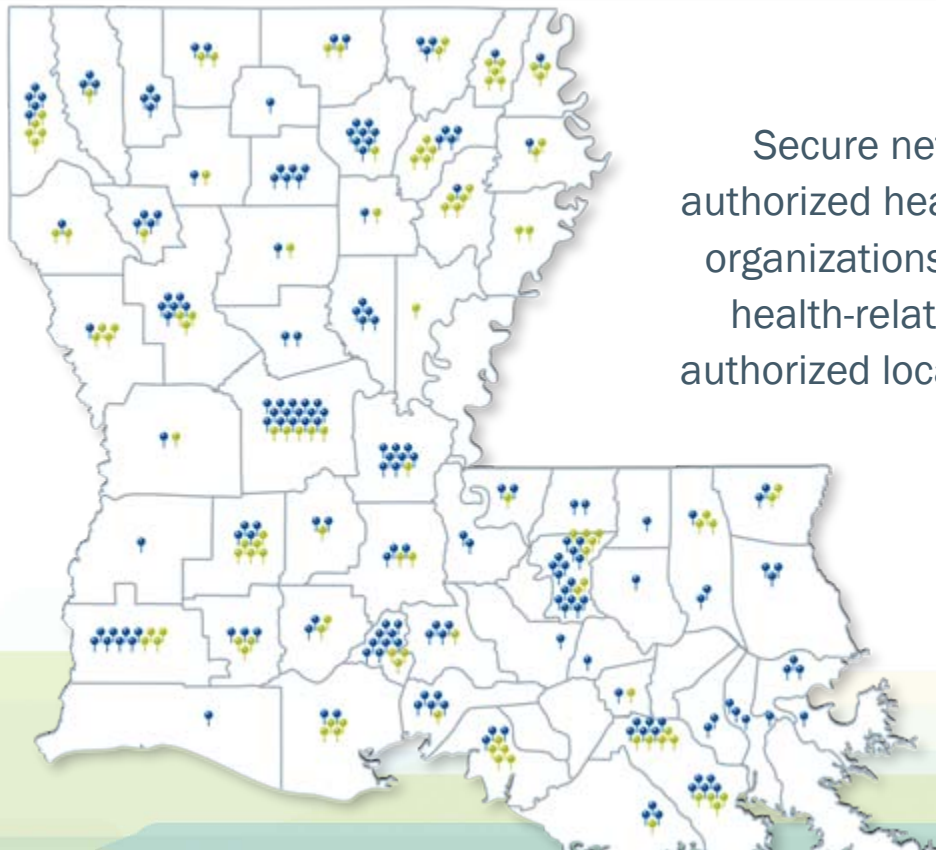
Louisiana's Challenges

- **Medicaid fee-for-service to managed care**
 - Medical
 - Behavioral/mental health
 - Aging and adult services
 - Intellectually and developmentally disabled
- **ED Utilization**
 - 3rd in nation in per capita ED use with 511 visits per 1,000 population at an average cost of \$1,000 each
 - La. Medicaid spent \$73M in 2013 on non-emergent ED use
- **Economic environment**
 - State budget shortfall

Louisiana Health Information Exchange (LaHIE)


**LaHIE
PARTICIPANT**

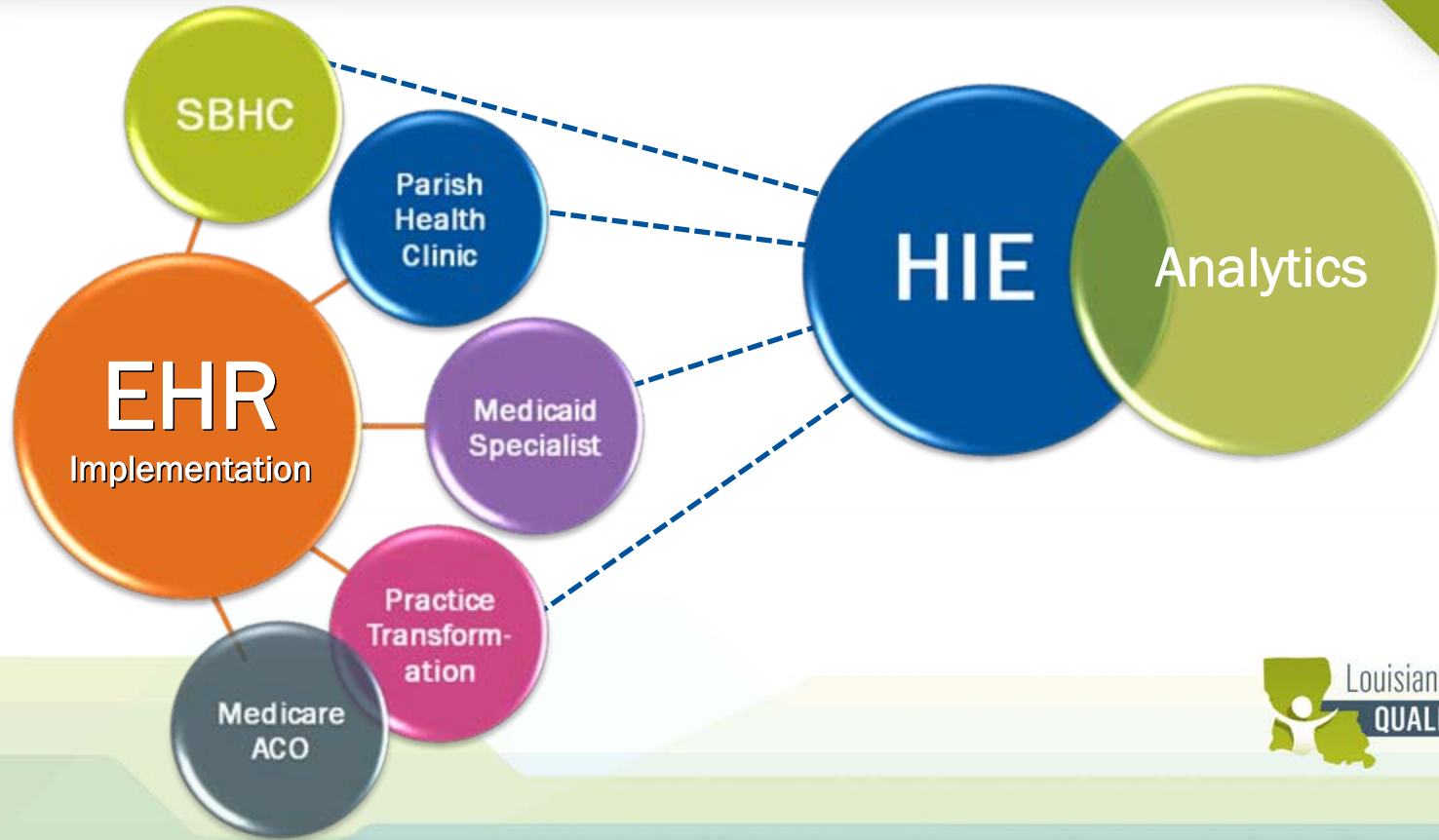

**LaHIE
PARTICIPANT
EXCHANGING
DATA**



Secure network that enables authorized health care providers and organizations to access and share health-related information from authorized locations across the state

February 2016

Quality Forum Vision: Health IT



Quality Forum Vision: Quality Improvement



- Louisiana Emergency Department Information Exchange (LaEDIE)
 - Reduce costs associated with non-emergent ED use
 - Improve outcomes by enabling patients to schedule follow-up visits with primary care physicians

Moving Forward

- Provide series of report cards to Louisiana Medicaid that reports on select measures
 - Low birth weights, re-admits, transitions of care, outcomes of service events
- Develop directory that reflects provider quality scores
- Provide reporting solution for analysis of electronic clinical quality measures and determination of total cost of care for Medicaid clients and providers
 - Quality and cost comparisons among providers/clinics/plans to demonstrate cost and quality of care

lhcf.org

Cindy Munn, CEO

Louisiana Health Care Quality Forum

8550 United Plaza Blvd.

Baton Rouge, LA 70809

(225) 334-9299

cmunn@lhcf.org

@CindyMunnCEO

