



Quality Measurement and P4P: What's Known, New, and Next

Peggy O'Kane, NCQA President
P4P Conference
March 9, 2017



What we know

Health Care 2017

**If ignorance
is bliss,
we should be
ecstatic**



**Costs will
continue
to matter**



Cost-shifting cannot keep growing





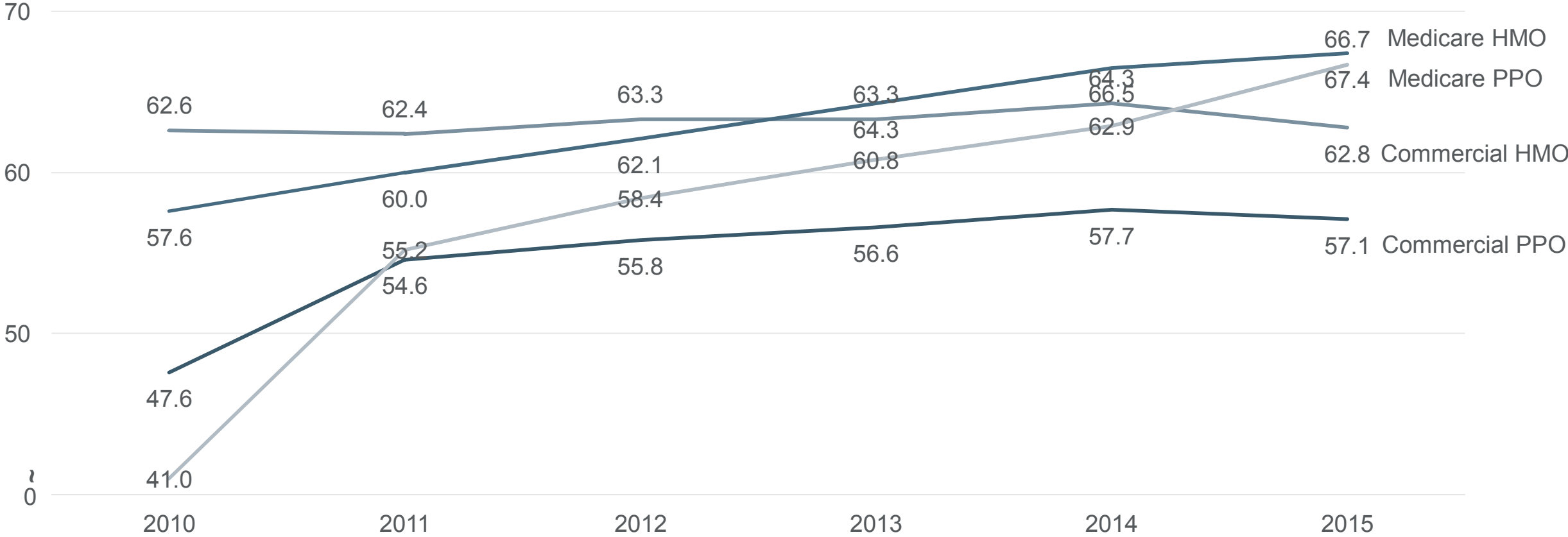
**States will be
more active
and important**



What we've done well

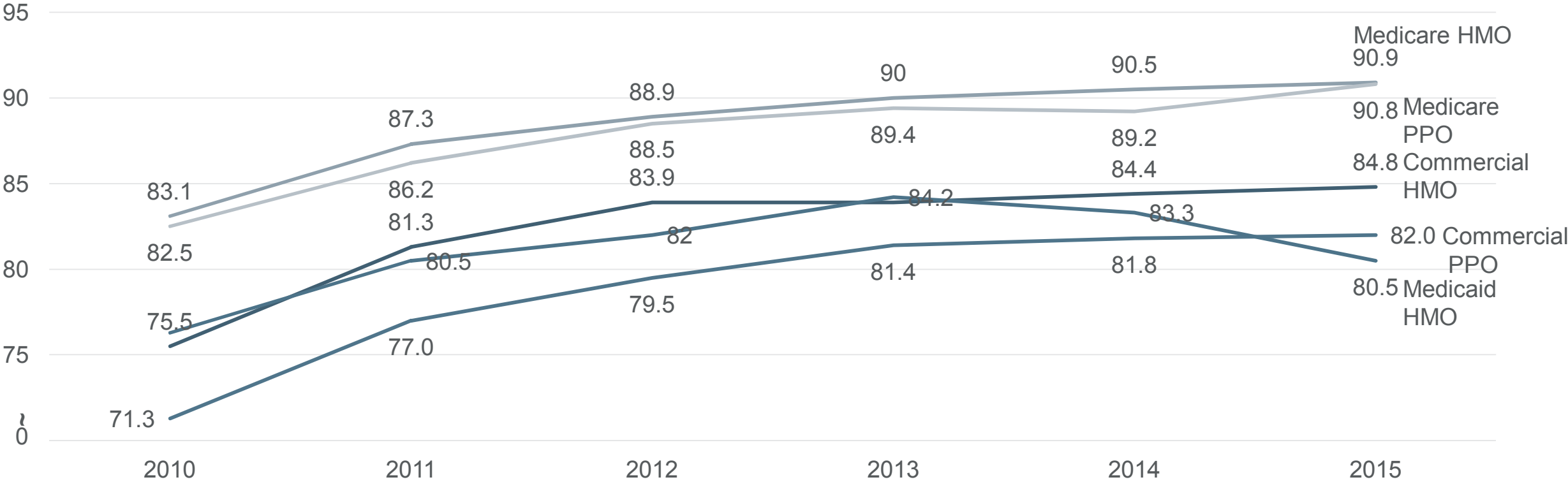
Success: Better prevention

Colorectal Cancer Screening (HEDIS rates)



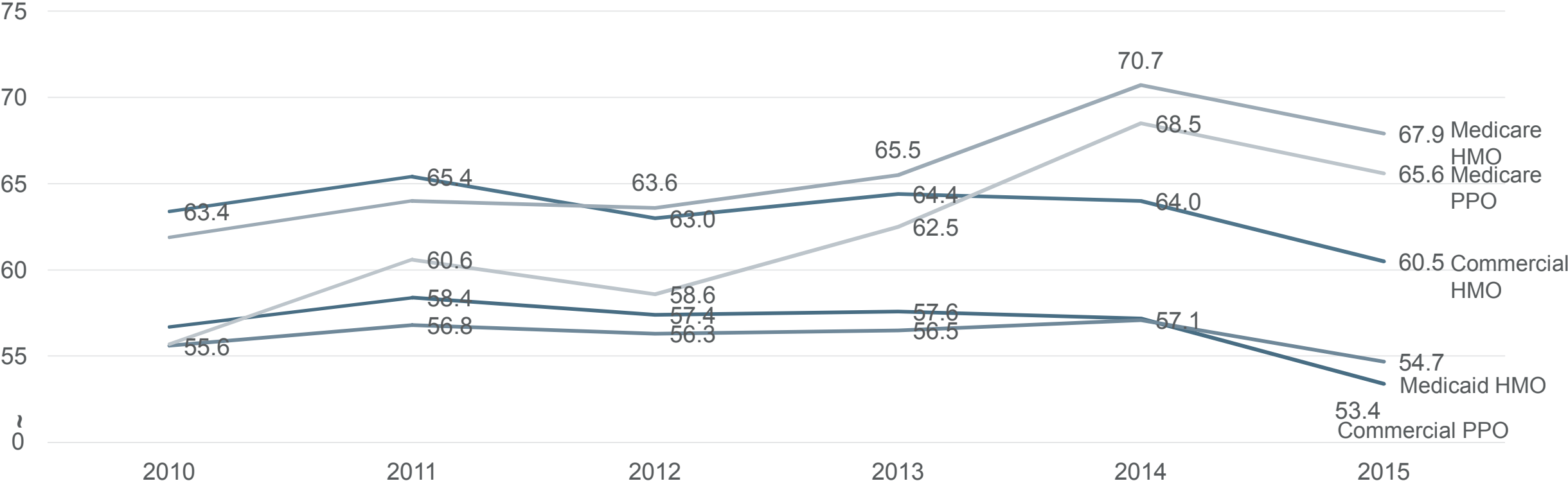
Success: Better management of chronic conditions

Persistence of Beta-Blocker Treatment After a Heart Attack (HEDIS rates)



Success: Better management of chronic conditions

Controlling High Blood Pressure (HEDIS rates)



Success: Medicare Star Ratings

2017 Health Plan Star Ratings



*49% plans
have 4-5 stars*

31% in 2012
(P4P's launch)



14 5-star plans

12 in 2016



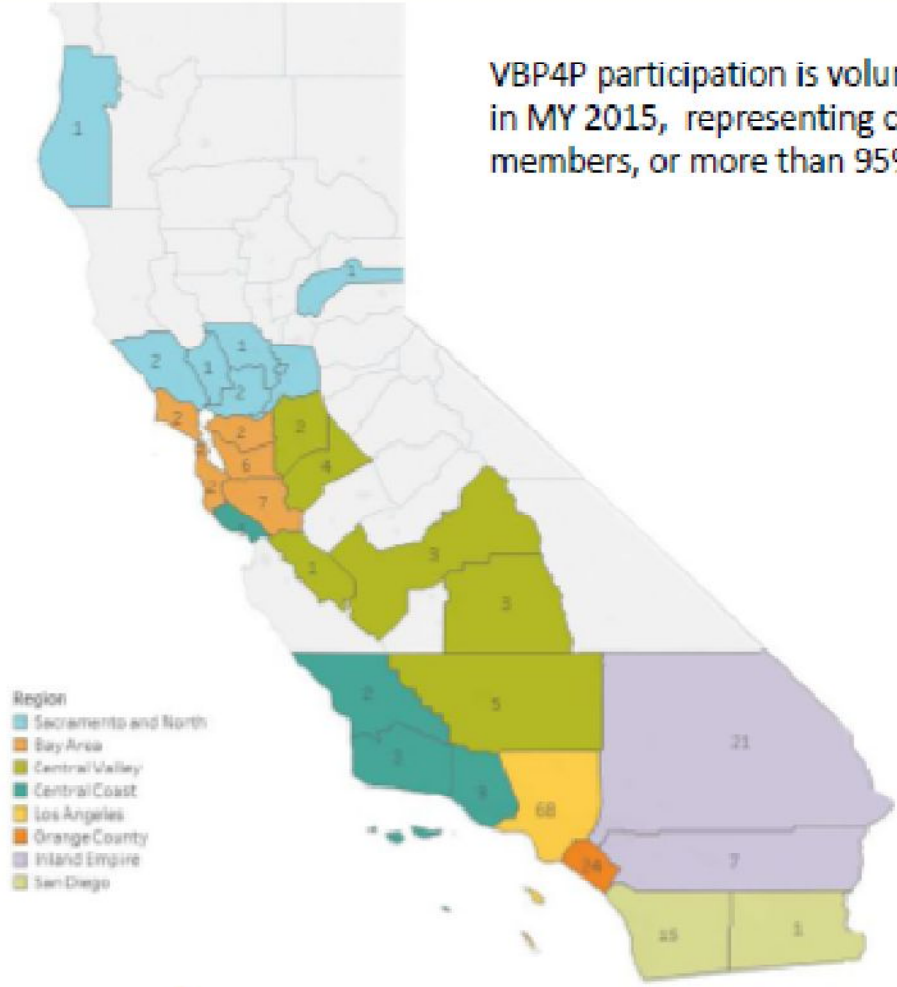
*Avg. premium
~4% lower*

13% lower than
before ACA

Kudos, California!

IHA physician-level reporting

VBP4P participation is voluntary—200-plus physician organizations (PO) participated in MY 2015, representing care delivered to 9.6 million commercial HMO/POS members, or more than 95% of California's commercial HMO/POS enrollment.



202 Physician Organizations		
Region	# PO	Enrollment
Sacramento and North	15	1,119,592
Bay Area	24	2,083,007
Central Valley	18	121,349
Central Coast	9	601,163
Los Angeles	68	2,758,981
Orange County	24	849,835
Inland Empire	28	1,189,788
San Diego	16	905,342
Total Enrollment (12/31/2015)		9.6 million



**But we have
challenges...**



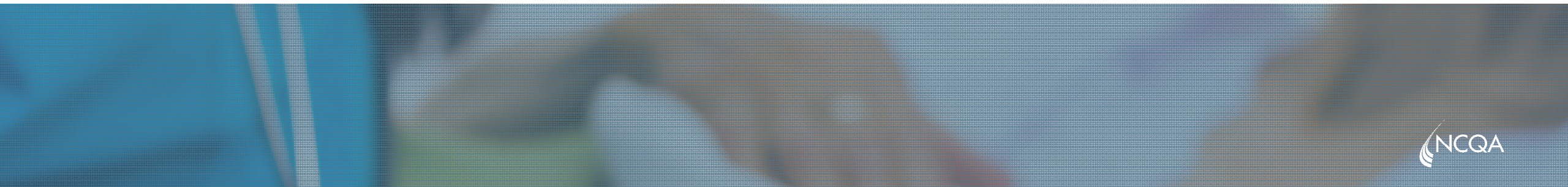
Vulnerable, resource-intensive populations

Acute exacerbation of chronic illness





What's next



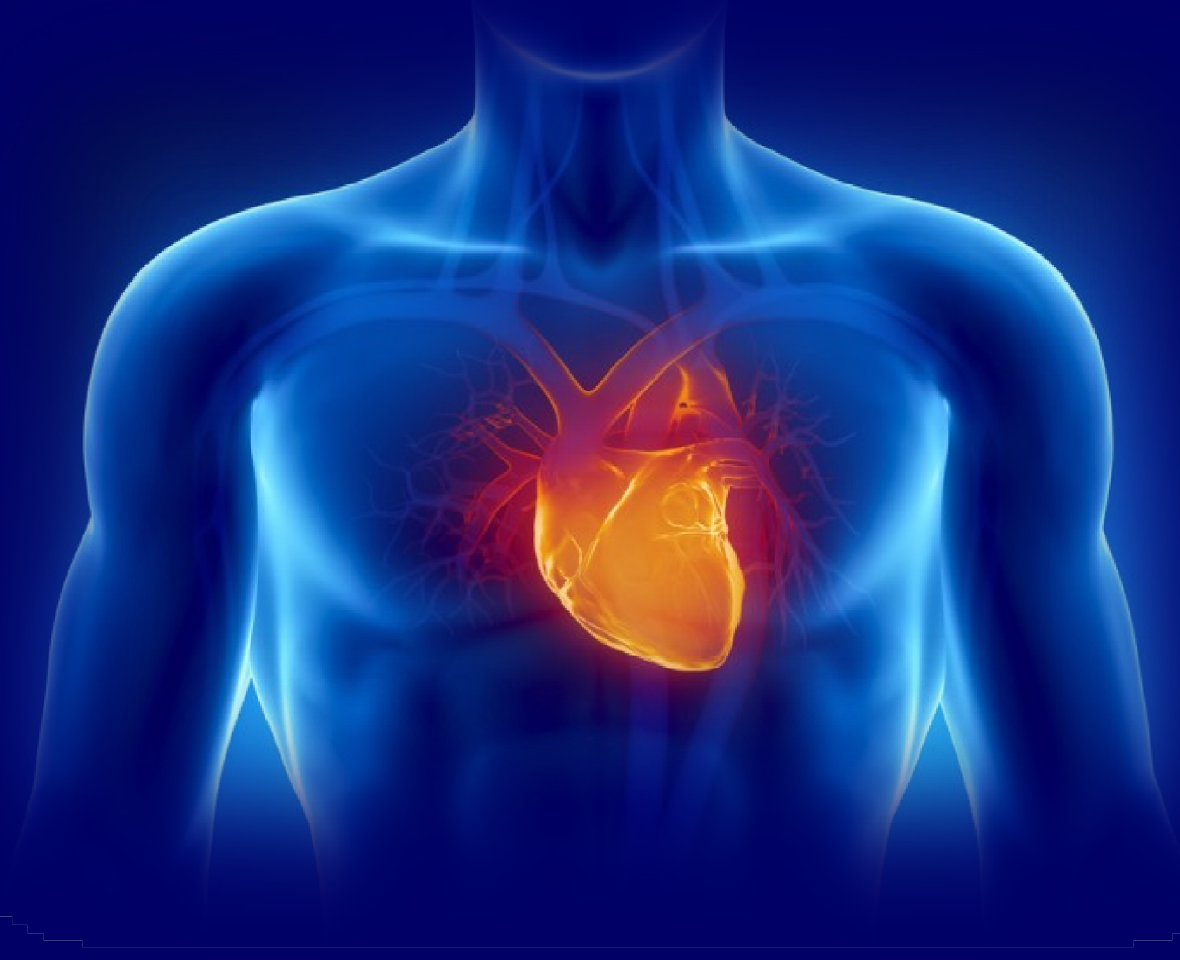
Focus on acute, expensive, high-risk pops.

E.g., frail elderly

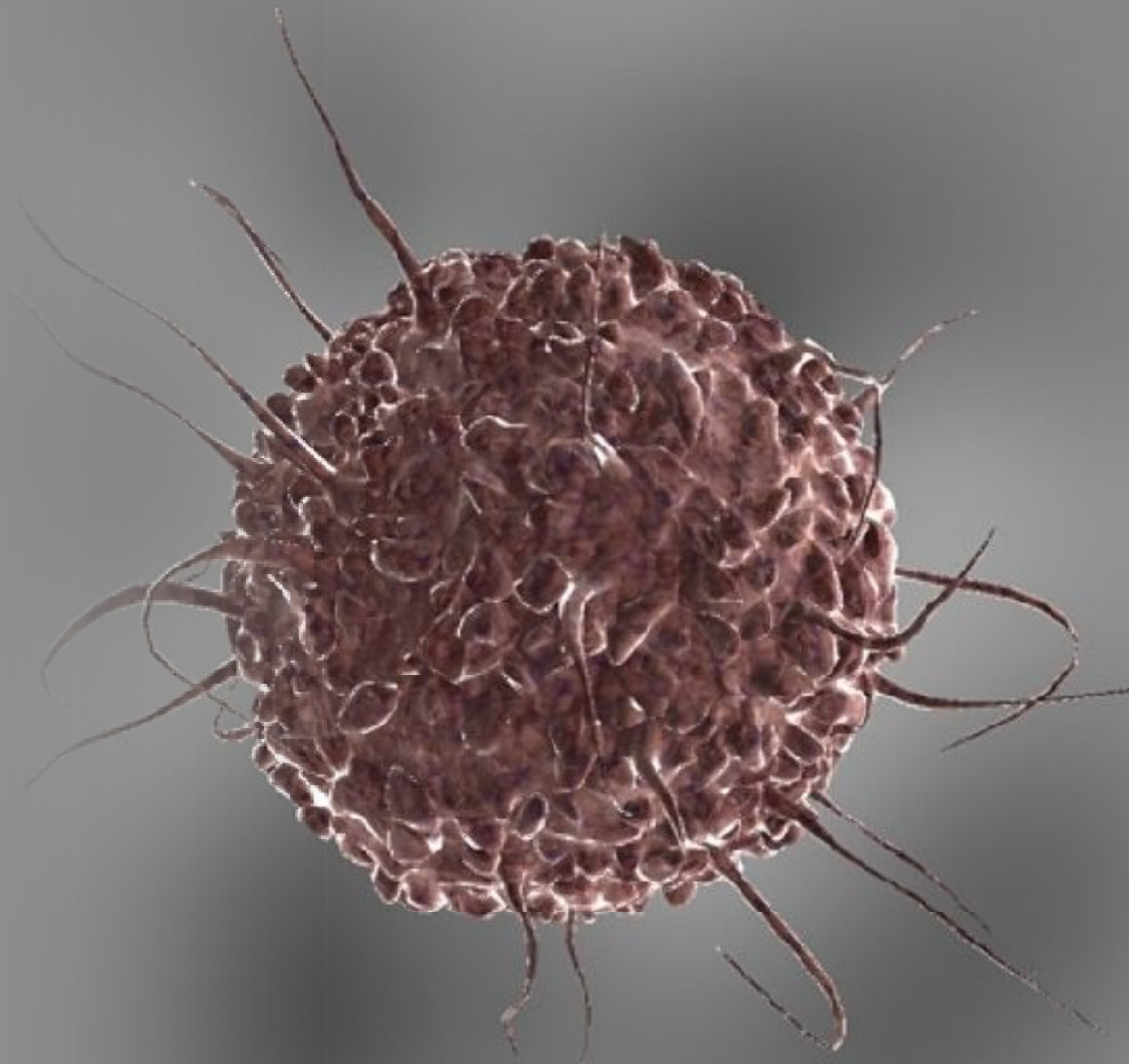


Address complex illnesses that have acute flare-ups

E.g., atrial fibrillation, Crohn's Disease



**Finally
penetrate
cancer care**



Update accreditation

Reflect health plans' roles as supply-chain managers



Evolve measurement



**Measure from clinical workflow,
not separate processes**

Be uniform, but not duplicative

- Eligible provider
- Group
- CIN/ACO
- Facility/health plan



Questions