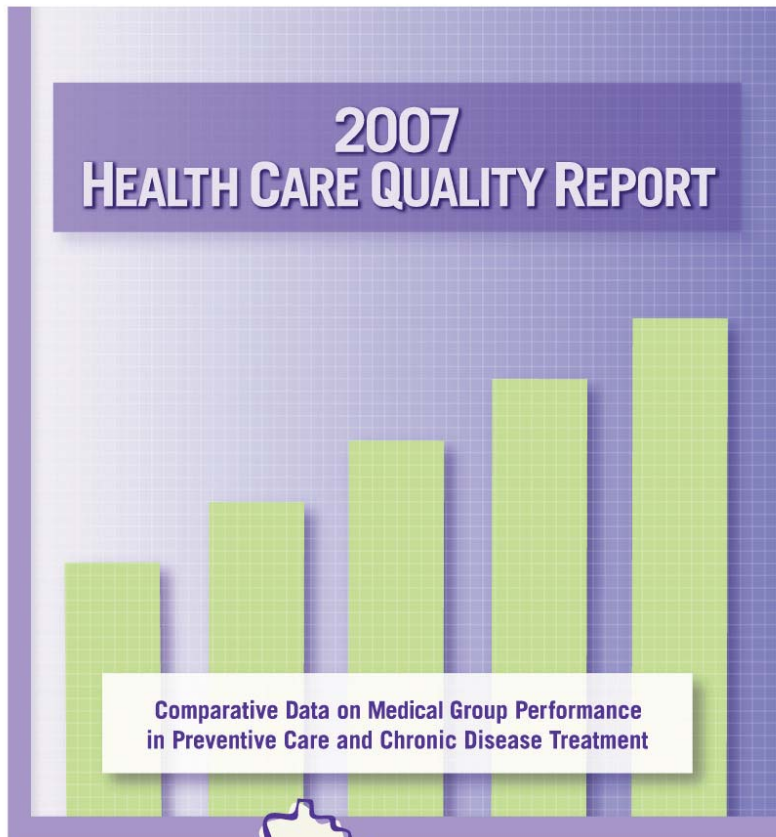


Minnesota Measurement and Pay for Performance

Jim Chase
Pay for Performance Conference
MiniSummit I
February 28, 2008

2007 Health Care Quality Report



- Reports on 14 quality measures
- Reports results on 128 medical systems
 - 73 multi-specialty groups
 - 34 single-specialty groups
 - 21 urgent/convenience care
 - Over 90% of Minnesotans get their care from these providers

Impacts of Public Reporting and P4P

- Measures are being imbedded in clinical practice
- Results are being used for clinic promotion and marketing
- Call for alignment
- Improve the measures



MANAGING DIABETES IN MINNESOTA



HOW DOES DIABETES CARE MEASURE UP?

It can be difficult to tell which clinics offer the best care for diabetes and who delivers the best results.

This site lets you compare clinics in and around Minnesota using "the D5". This information can help you to make choices about your care and talk with your doctor about the results. Clinics are already using this information to improve the care they provide.

VIEW & COMPARE

diabetes care in area clinics

enter clinic name, city, zip, county or address

START YOUR SEARCH HERE >>

WHO WE ARE

learn about Minnesota Community Measurement >

LEARN MORE

about the D5 data and how it's collected >

WHAT IS THE D5?

The D5 is a set of five treatment goals that, when achieved together, represent the gold standard for managing diabetes. Reaching all five goals greatly reduces a patient's risk for the cardiovascular problems associated with diabetes. A clinic's D5 is based on the number of diabetes patients, ages 18-75, who reached all five goals in 2006: *



- 1 **Hemoglobin**
A1c (HbA1c) level less than 7%
- 2 **Blood Pressure**
less than 130/80 mmHg
- 3 **LDL-C**
(bad cholesterol) less than 100 mg/dl
- 4 **Daily aspirin use**
for patients ages 41-75
- 5 Documented as **tobacco-free** in medical record

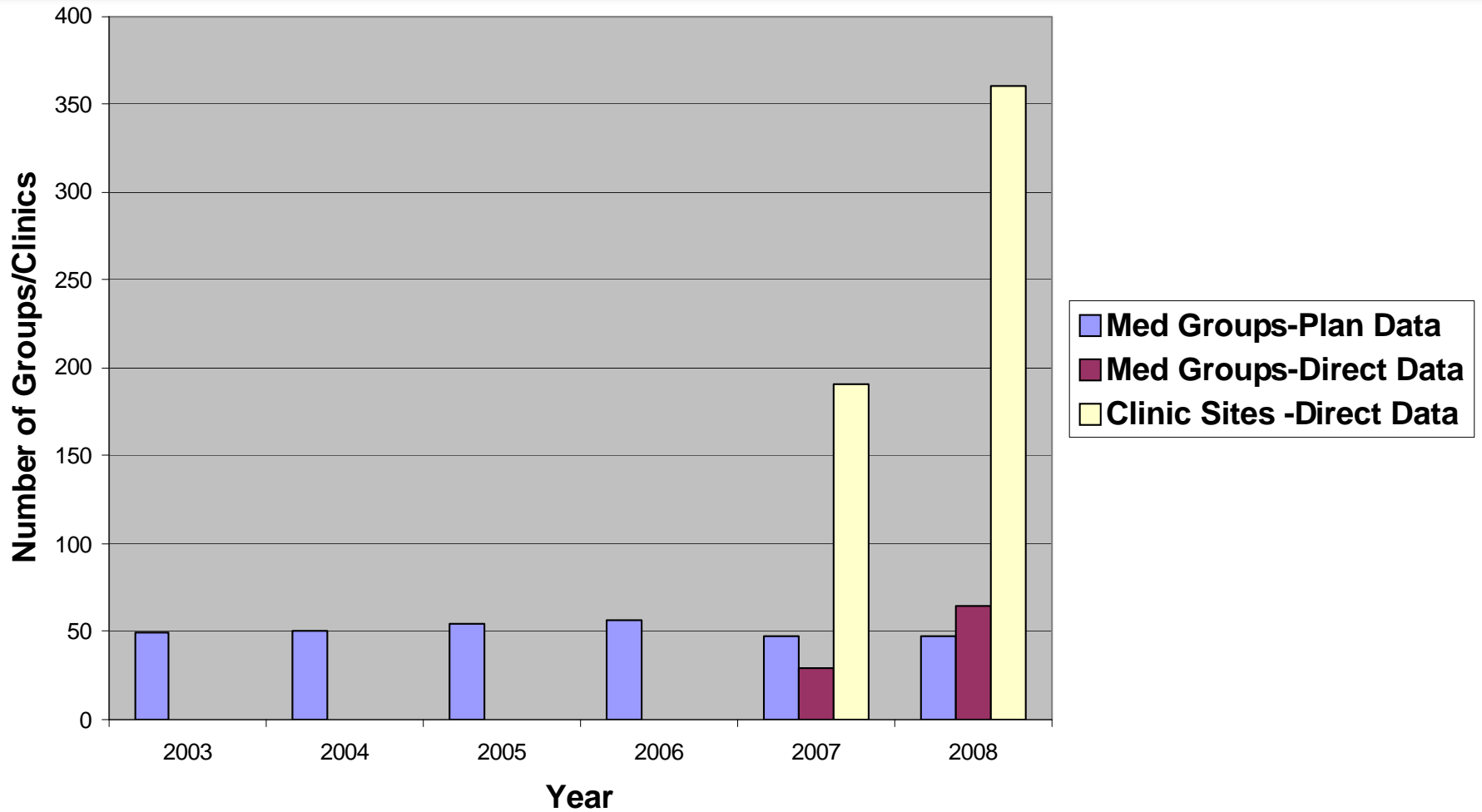
* The data collected for this measure are from medical groups and clinics. The data have been audited and validated by MN Community Measurement. [Read more details here.](#)

Direct Data Submission

Advantages

- All patients represented
- Faster results
- Site level reporting
- Increased provider confidence in data
- Used with electronic or paper records
- New measures available

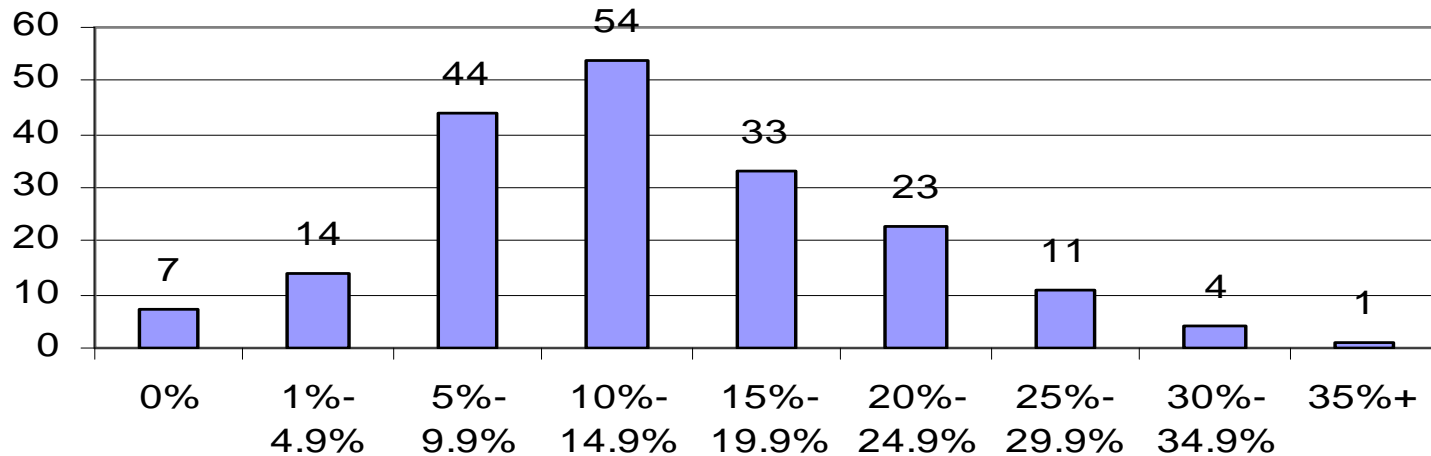
Participating Medical Groups Diabetes Measure



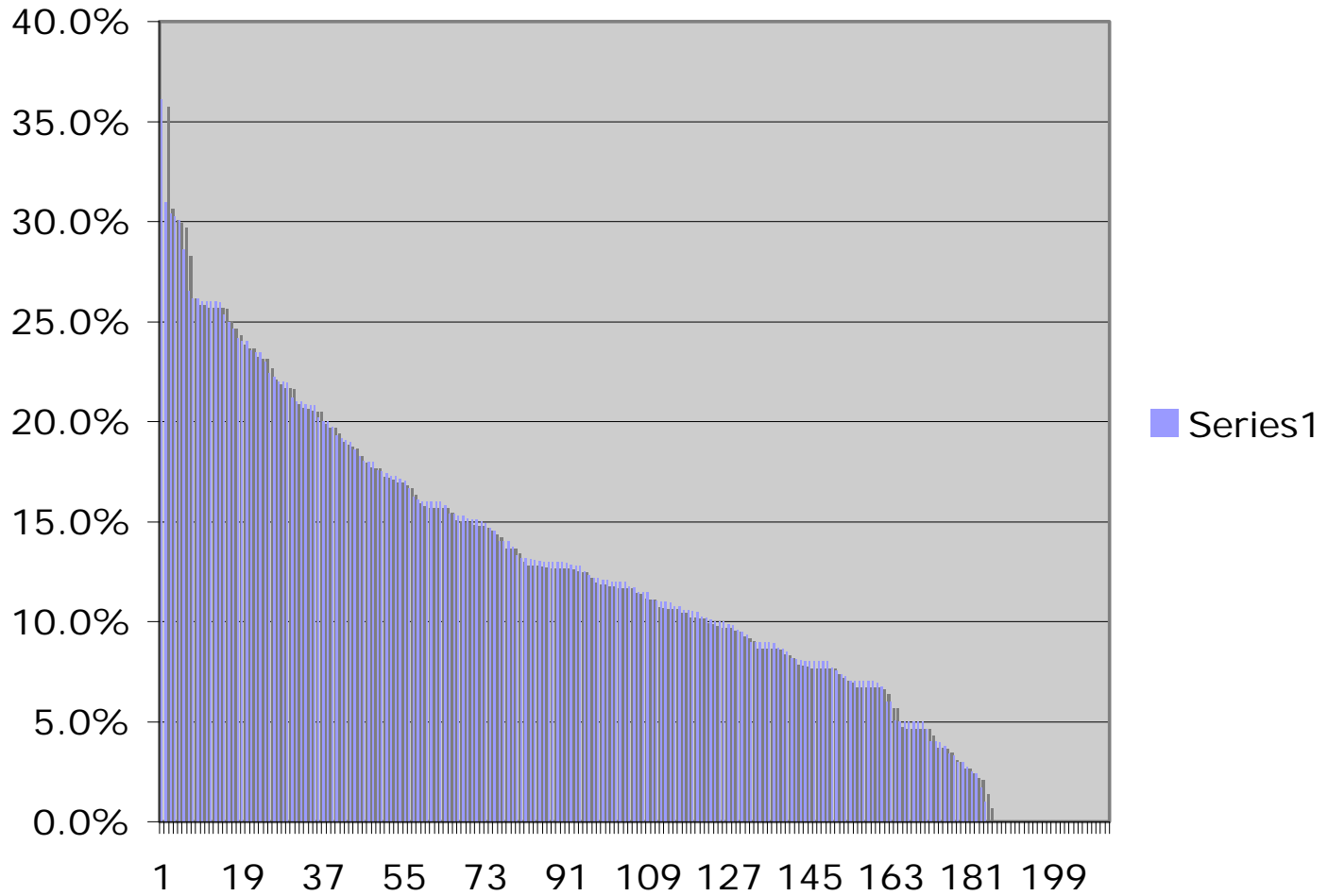
Direct Data Results

Wider range of results by site

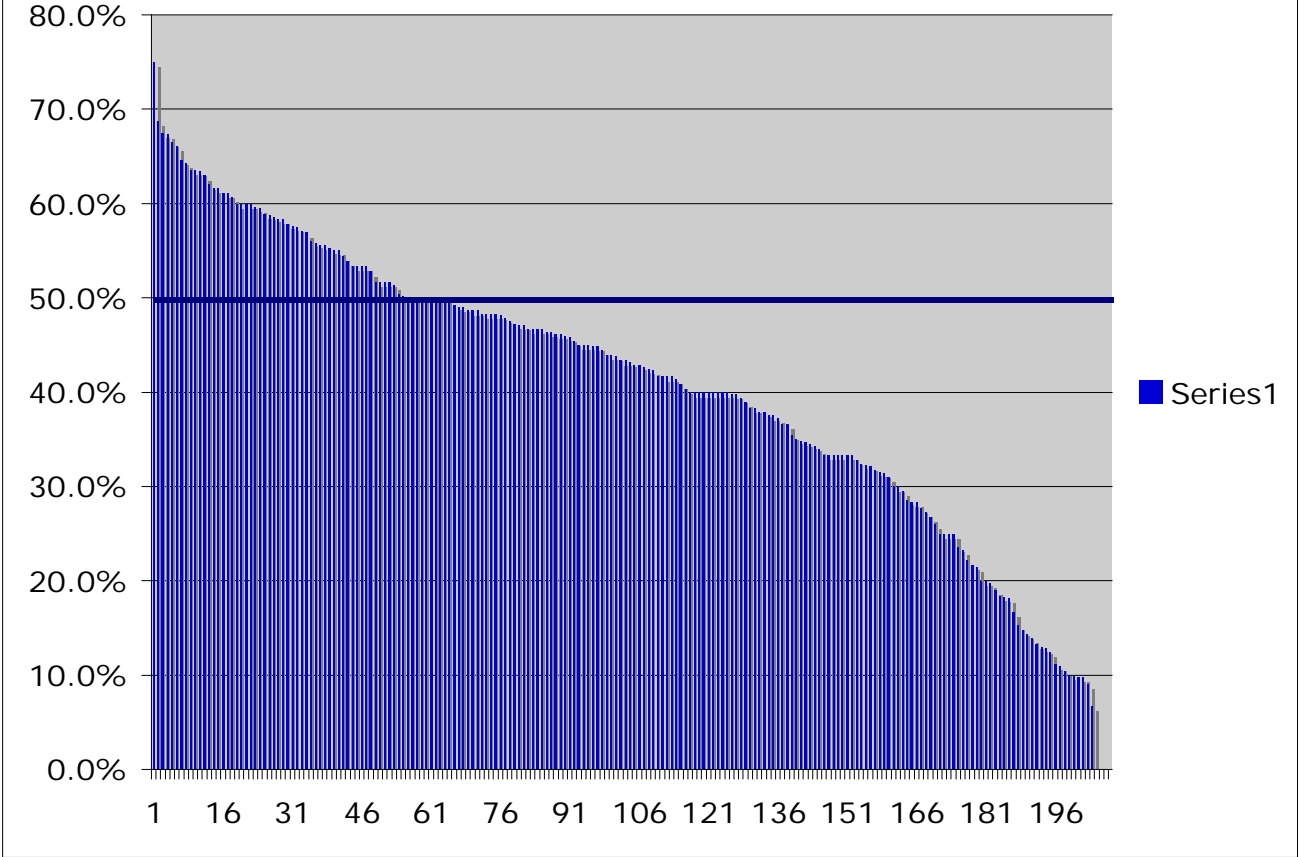
**DDS Optimal Diabetes Measure
Clinic Sites By Frequency Within Ranges
N=191 Clinic Sites
Final Rates as of 6/29/07
Overall Weighted Mean = 13.54%**



2006 Performance Diabetes Clinic Scores

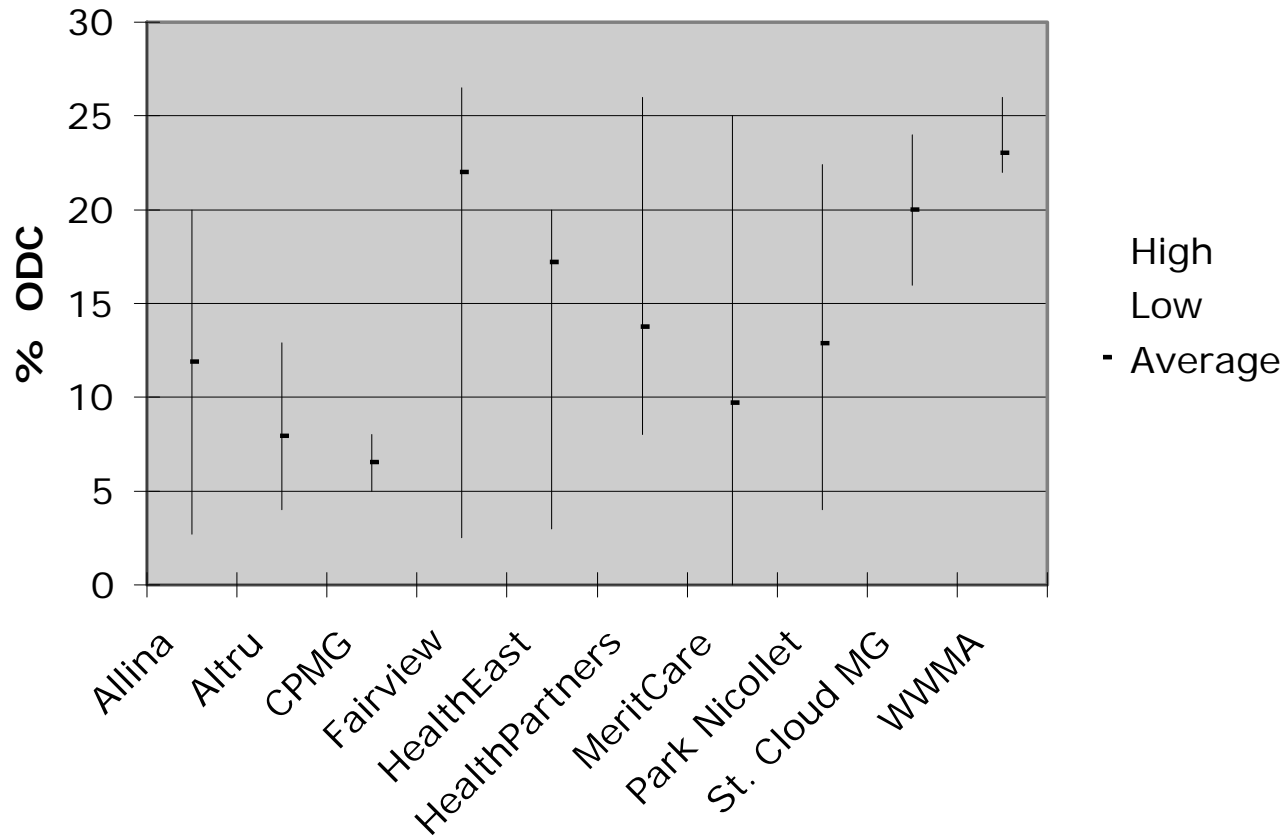


CAD clinic site scores 2007



Rewards Threshold

Medical Group Variation

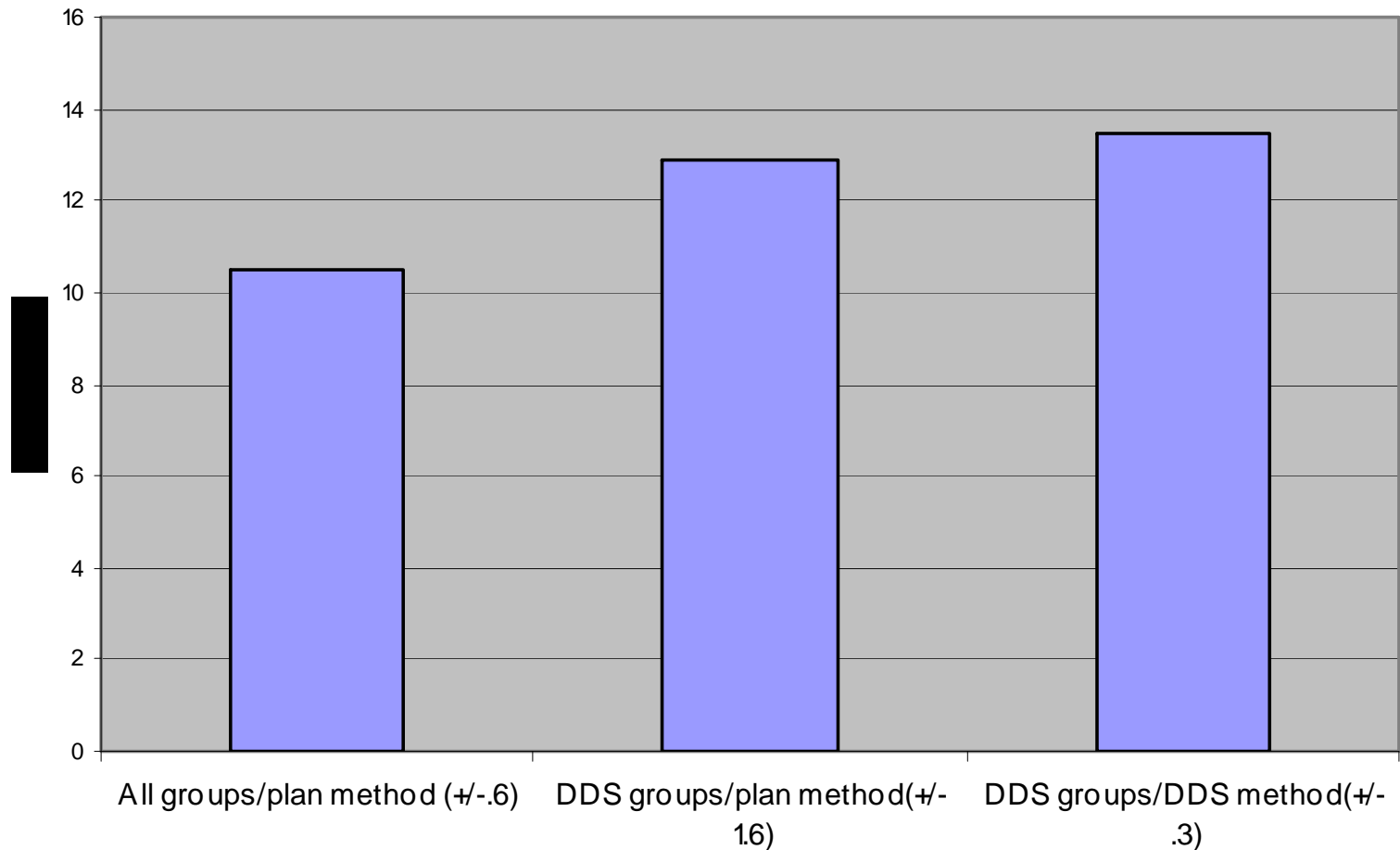


How do DDS results compare to the health plan method?

- There are slightly different measurement specifications
 - Only data from that group
 - All population not just managed care population
- DDS results slightly higher, but explained by self selection of the groups

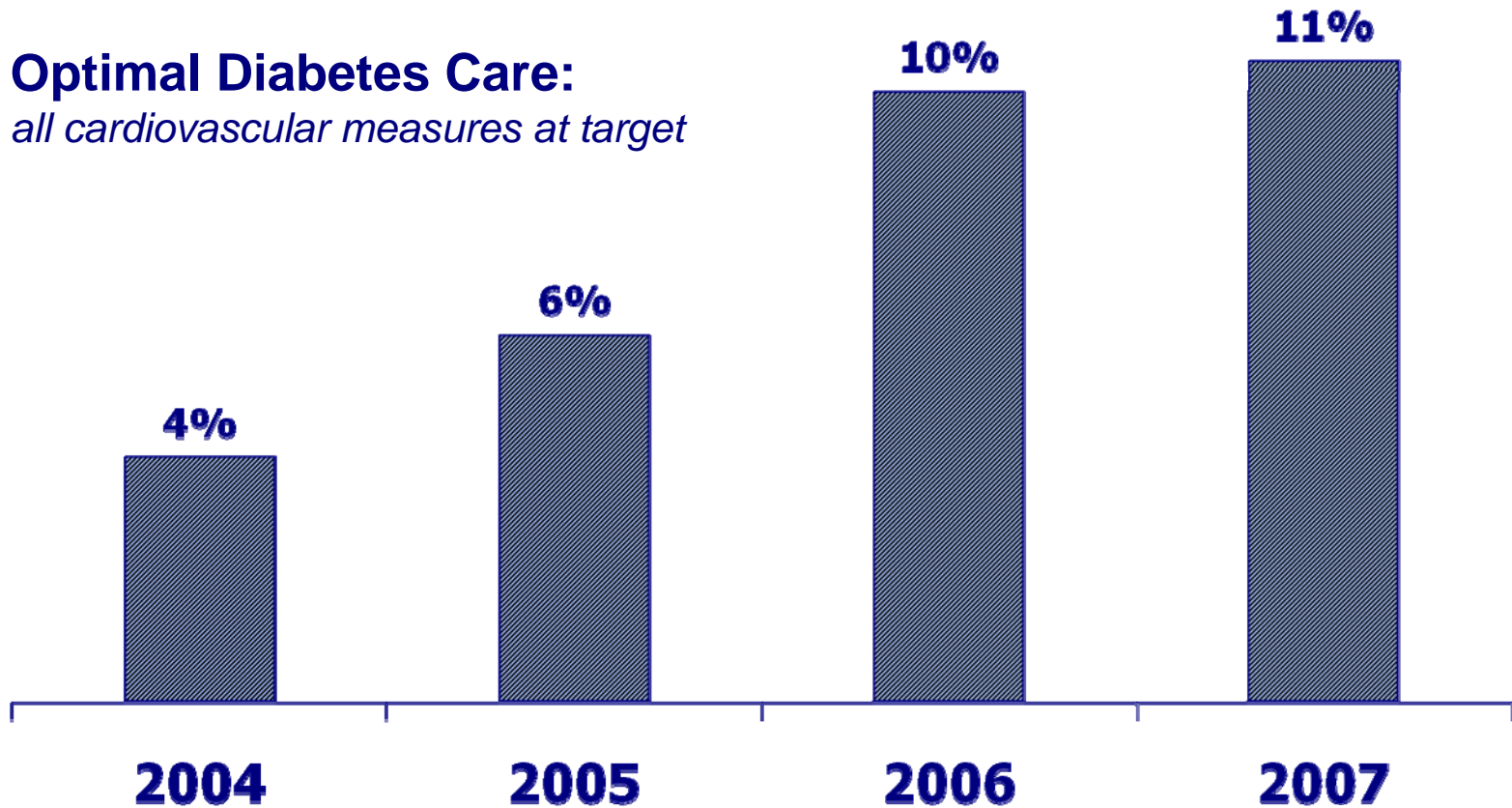
Comparison of Results by Method

2007 Diabetes Results by Method



Are We Where We Want to Be in Diabetes Care?

Optimal Diabetes Care:
all cardiovascular measures at target



Next Steps

- More support for clinical data collection
- Participate with other regions
- Redesign payment
- Redesign care

Questions or Comments

Jim Chase

Executive Director, MN Community Measurement

651-209-0390

chase@mnhealthcare.org