



THE LEAPFROG GROUP

Informing Choices. Rewarding Excellence.
Getting Health Care Right.

Leapfrog Hospital Rewards Program: Measures & Scoring

Presentation Objectives

1. Review 2008 Leapfrog Survey components
2. Applying Survey components to LHRP
3. Translating Survey results into LHRP scores
4. Understanding LHRP scores

Program Parameters

- **Leapfrog Hospital Survey is the sole measure source**
- Reward efficiency (i.e., intersection of quality and resource utilization)
- Reward top performers and improvers
- Scoring consistent with Leapfrog Hospital Survey public reporting
- Flexibility in reward design

2008 LEAPFROG HOSPITAL SURVEY

- Computerized Physician Order Entry (CPOE)
- ICU Physician Staffing (IPS)
- Evidence-Based Hospital Referral (EBHR)
- Safe Practices Score (SPS)
- Common Acute Conditions (CAC)
- Hospital-Acquired Conditions (HAC)
- Other Policies & Public Reporting
 - Never Events
 - Transparency Indicator

LHRP Quality Score

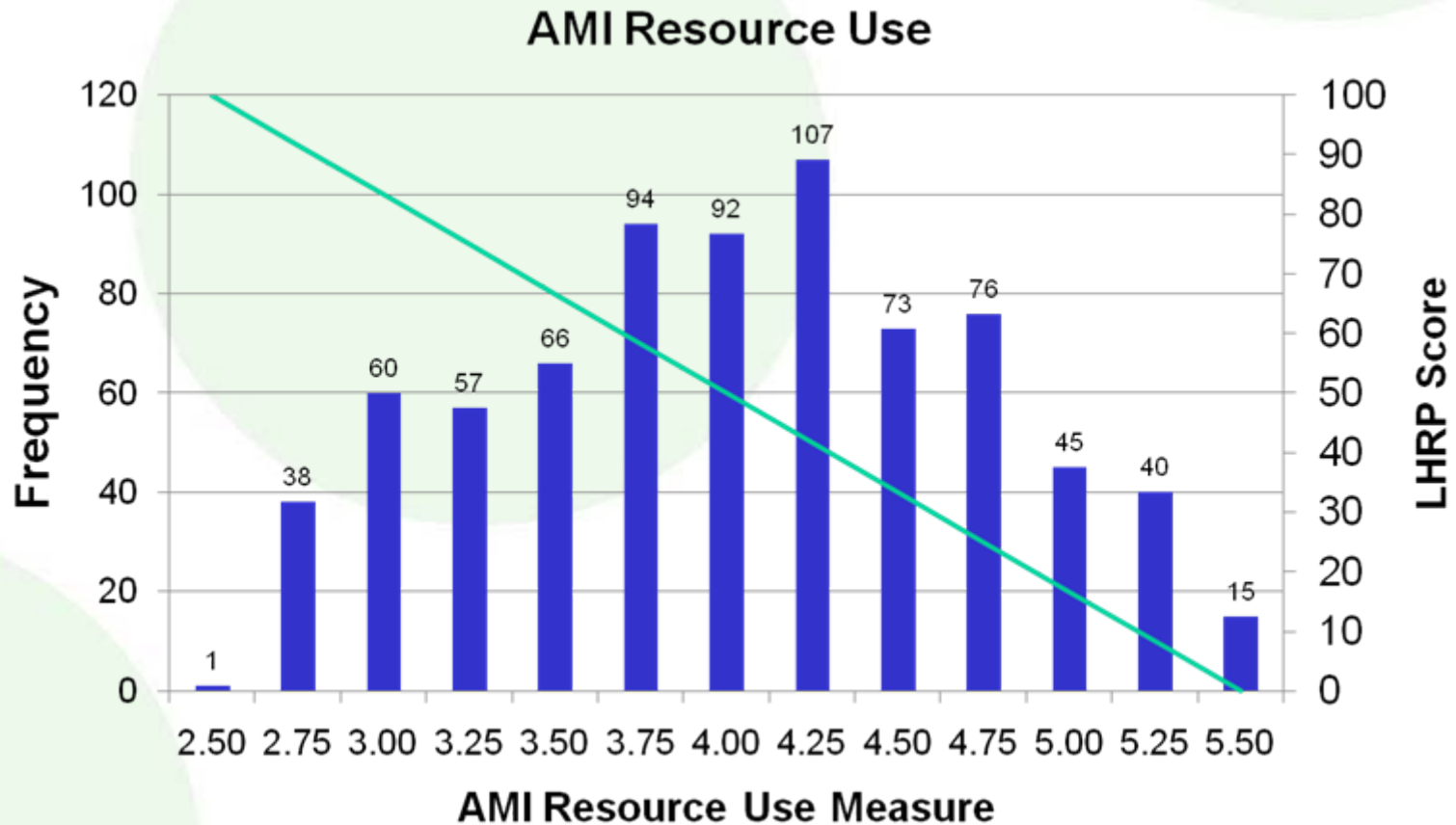
- Each measure converted to 0-100 scale.
- Each measure weighted → Aggregate score
- Represents 65% of overall Efficiency score

Clinical Focus Area	Weighted Score
CPOE	10%
IPS	10%
Evidence-Based Hospital Referrals	31%
Common Acute Conditions	14%
Hospital-Acquired Conditions	12%
Never Events	8%
Safe Practices	15%
TOTAL	100%

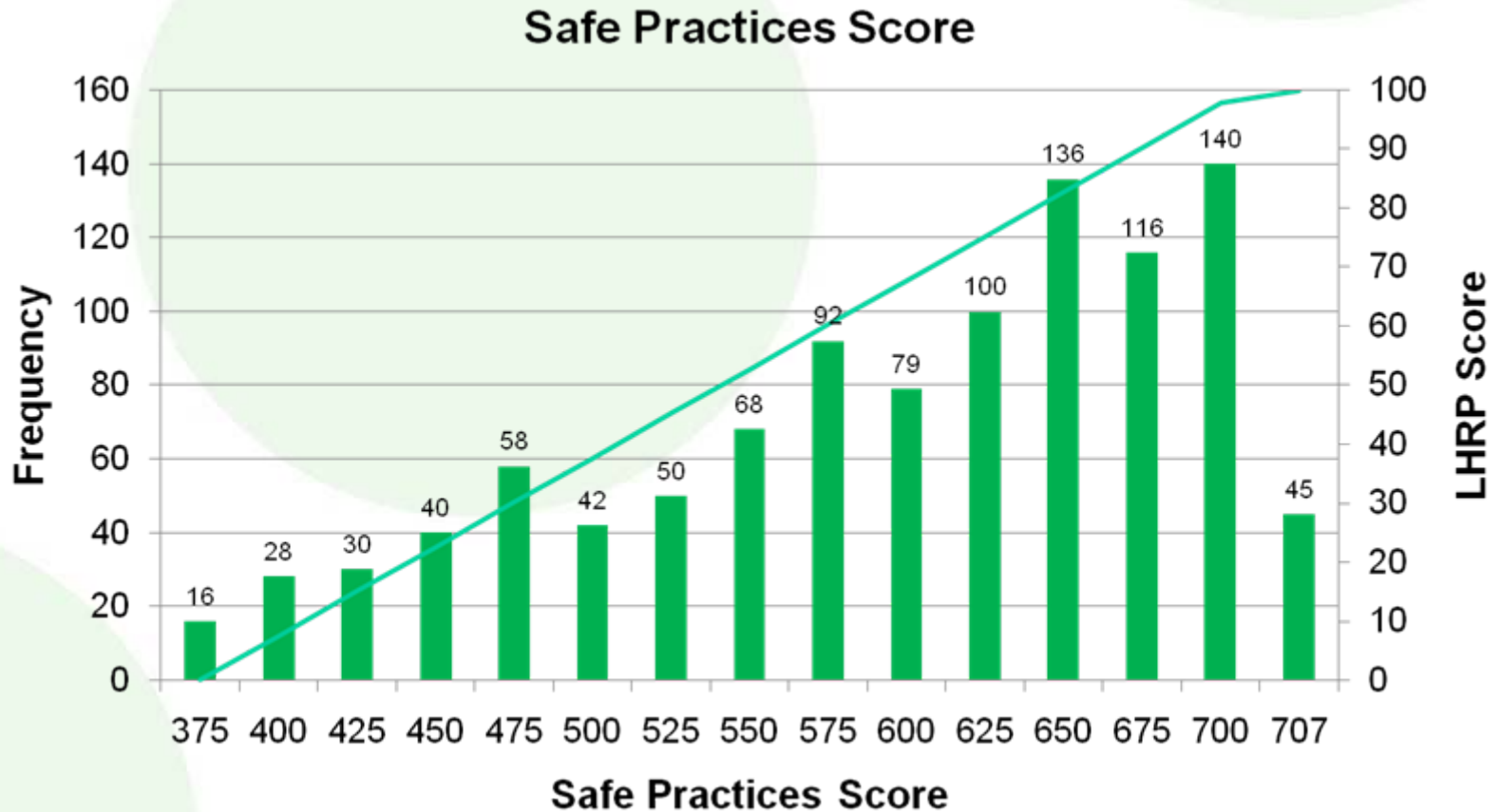
Categorical Measure Examples

Measure	Measure Weight	Measure Type	Scoring scale
CPOE Score	10%	Categorical	Fully implemented = 100 Good progress = 70 Good early stage effort = 40 Willing to report publicly = 20 Did not disclose this information = 0
PCI Quality	5%	Categorical	Fully implemented = 100 Good progress = 66 Good early stage effort = 37 Willing to report publicly = 7 Did not disclose this information = 0

Continuous Measure – Example 1

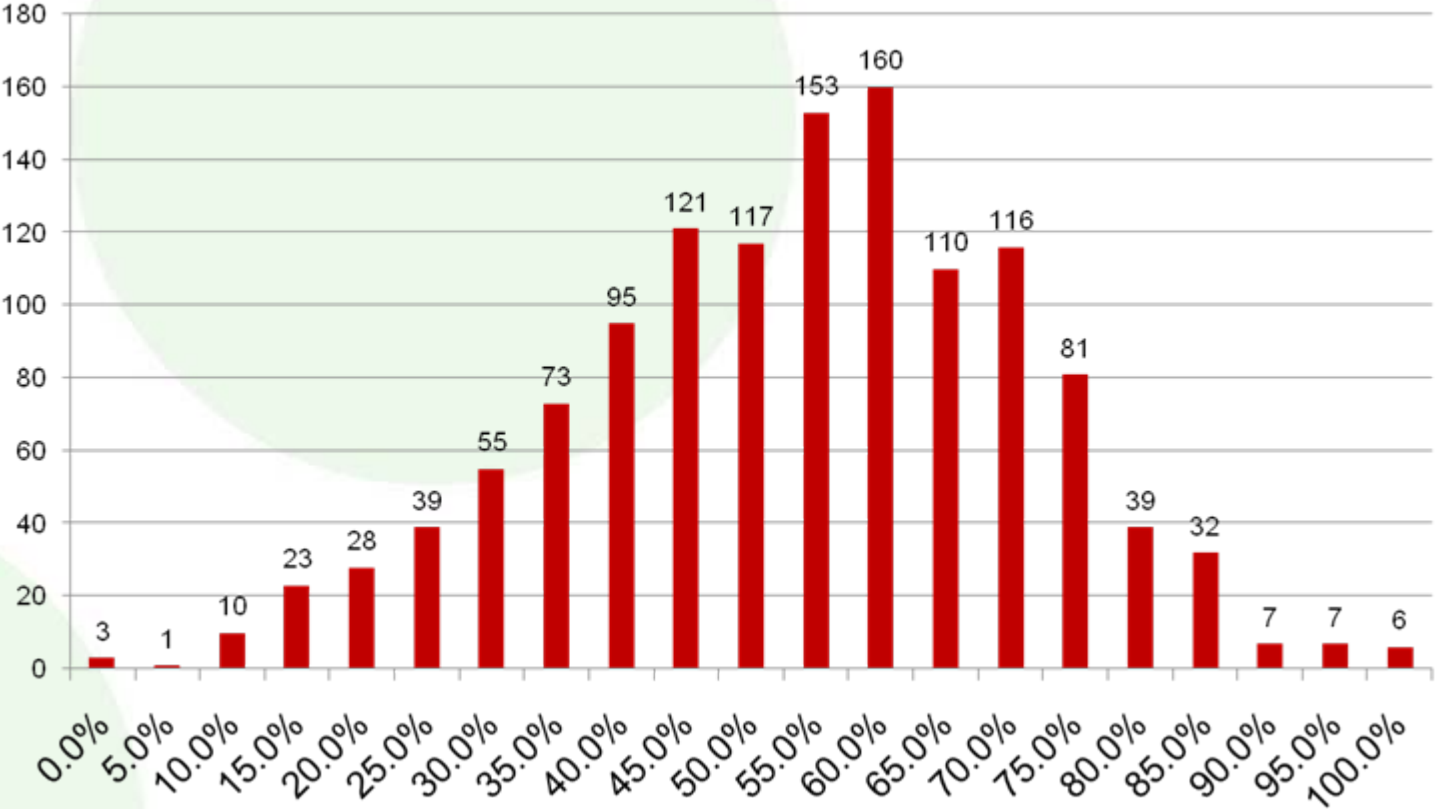


Continuous Measure – Example 2



Quality Score

Quality Score Distribution



LHRP Resource Use Score

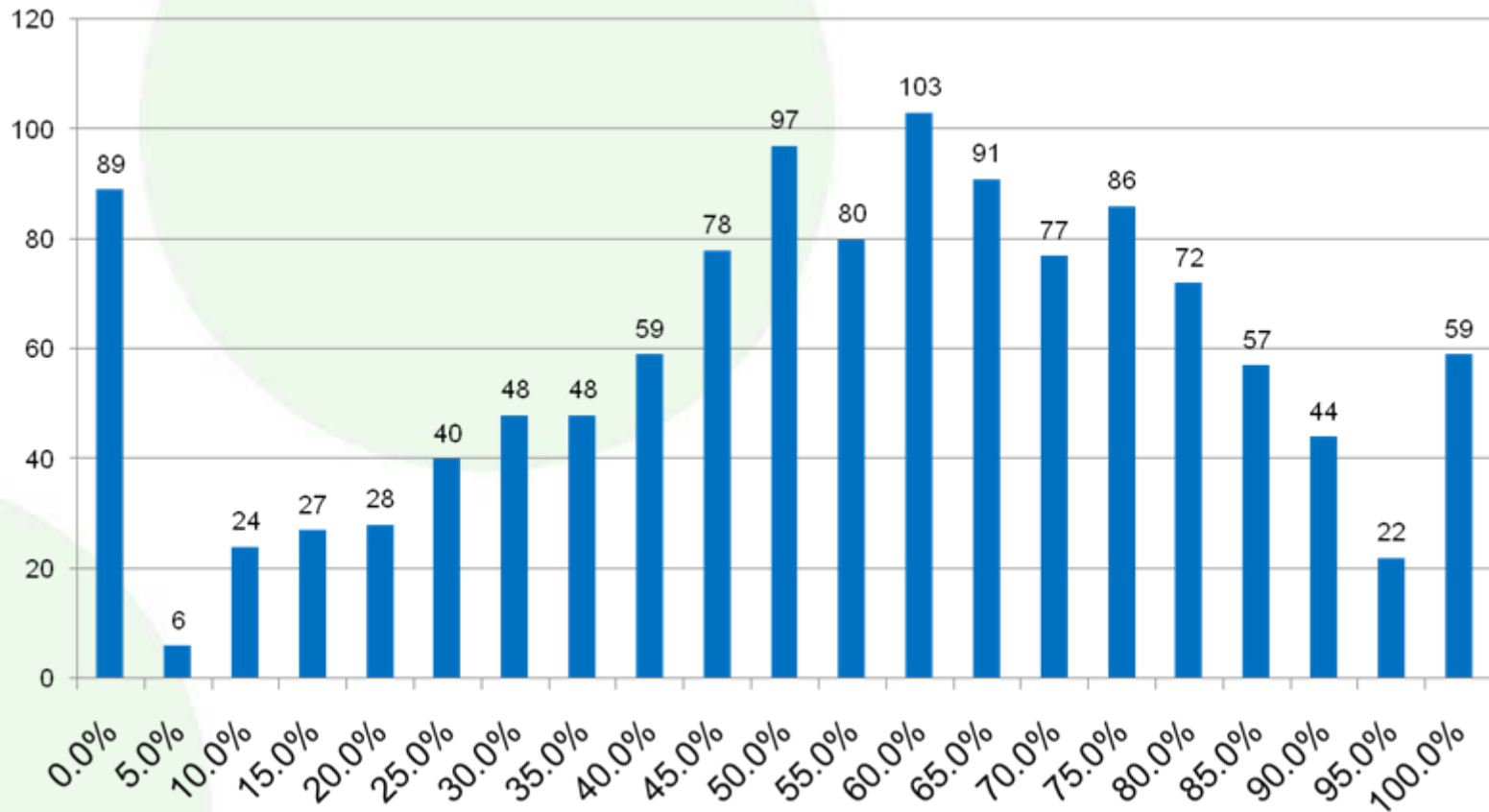
- Each measure converted to 0-100 scale.
- Each measure weighted → Aggregate score
- Represents 35% of overall Efficiency score

Clinical Focus Area	Weighted Score
Evidence-Based Hospital Referrals	42%
Common Acute Conditions	48%
Hospital-Acquired Conditions*	10%
TOTAL	100%

* HAC measures also included in quality score.

Resource Use Score

Resource Use Score Distribution



Quality vs. Resource Use

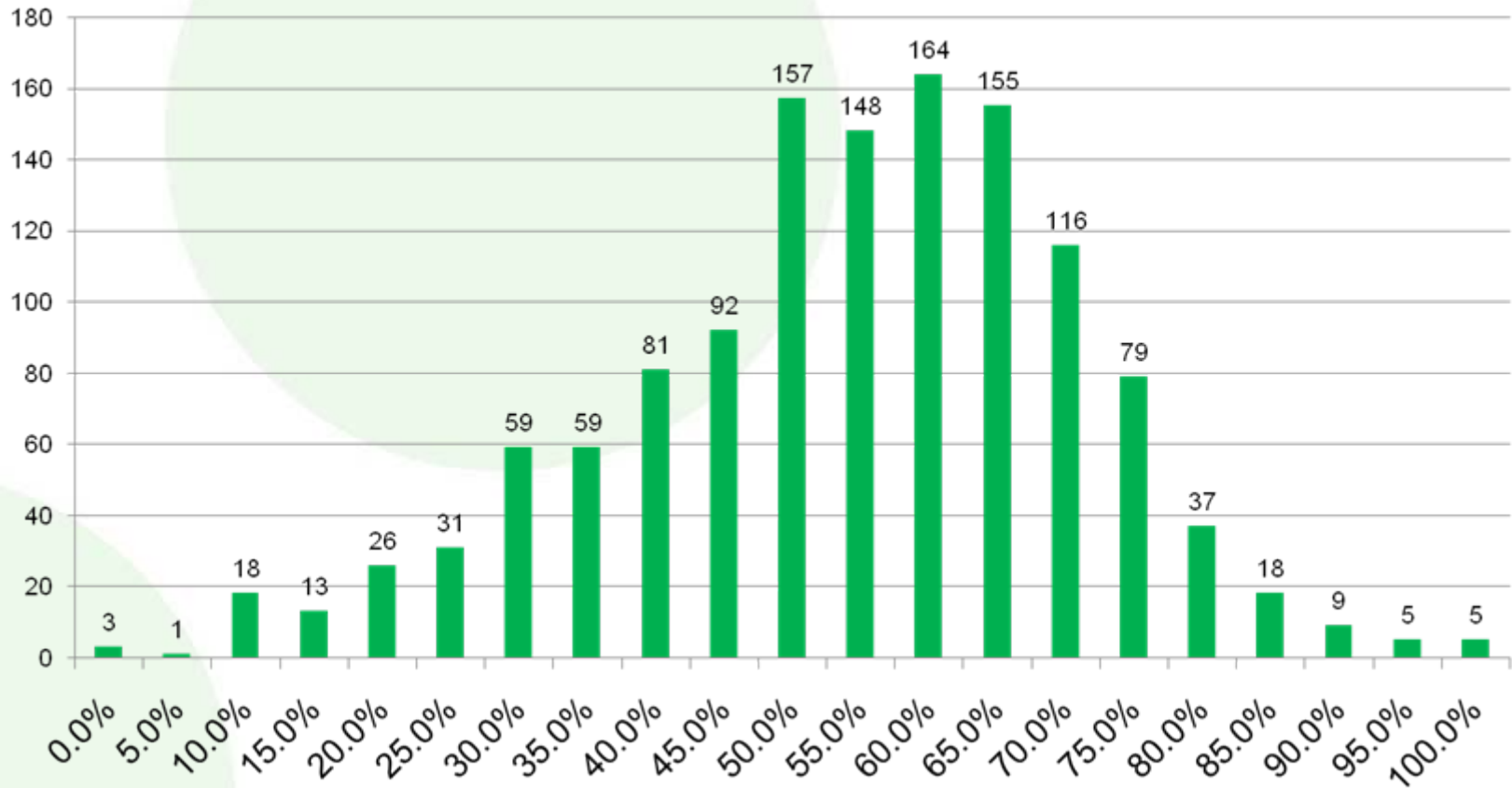


LHRP Efficiency Score

- Composed of Quality Score (65%) and Resource Use Score (35%)
- Represents overall hospital performance score for LHRP
- Determines hospital eligibility for attainment and improvement rewards

Efficiency Score

Efficiency Score Distribution



Sample Hospital Performance Report

- Performance results for each Survey area plus final quality, resource use, and efficiency scores
- Performance comparisons to national average and state average scores
- Performance scatter plot results
- National performance decile ranking

Important: For internal use only! Not for public distribution.

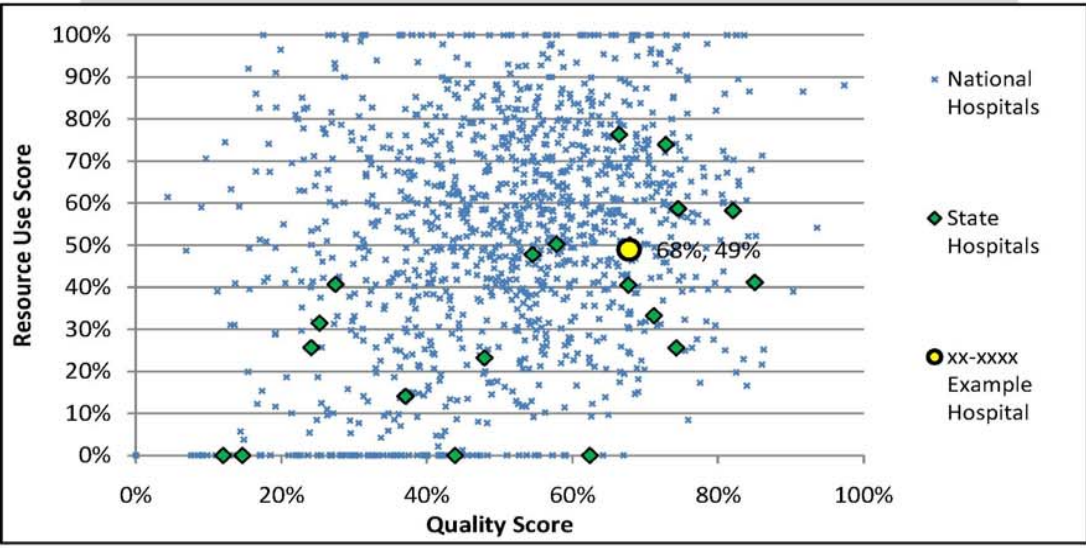
[Click here for a detailed description of the scoring process for the Leapfrog Hospital Rewards Program.](#)

	CPOE	IPS	CABG Quality	CABG Resource	PCI Quality	PCI Resource	AVR Results	AAA Results	AAA Process	Pancreatectomy Survival Predictor	Esophagectomy Survival Predictor	Bariatric Surgery Results	High Risk Delivery Results	AMI Quality	AMI Resource Use	Pneumonia Quality	Pneumonia Resource Use	Pressure Ulcer Rate	Injuries Rate	Never Events	Safe Practices LHRP Score	Quality Score	Resource Use Score	Efficiency Score
National average	36	46	64	50	64	57	68	65	42	39	39	64	61	49	48	52	53	41	43	71	57	51%	52%	52%
State average	53	56	63	33	52	47	57	72	55	48	54	68	64	50	34	69	29	34	35	76	51	54%	35%	48%
xx-xxxx Example Hospital	40	100	51	15	37	92	45	95	100	45	27	84	49	43	20	100	54	85	89	20	95	68%	49%	61%

Cells are color coded as follows:

- Green - 10 or more points better than the NATIONAL average
- Yellow - Within 10 points of the national average
- Red - 10 points or worse than the national average
- Gray - Not applicable

The graph below shows how the quality and efficiency of Example Hospital compare to other hospitals reporting data through the Leapfrog Survey.



The table below highlights the national decile of Example Hospital for the efficiency score (combination of quality and resource use).

Decile	Score Range
Top	71% or better
2nd	66% to 71%
3rd	61% to 66%
>>>>> 4th	57% to 61%
5th	53% to 57%
6th	49% to 53%
7th	45% to 49%
8th	38% to 45%
9th	29% to 38%
10th	Less than 29%

All comparative hospital data is current as of 12/31/2008

Contact Information

Leah Binder, CEO

LBinder@leapfroggroup.org

(202)292-6713

Guy D'Andrea

Discern Consulting

gdandrea@discernconsulting.com

(410) 542-4470