



Agency for Healthcare Research and Quality

Advancing Excellence in Health Care • www.ahrq.gov

MONAHRQ



A Web-Based Tool for Quality and Utilization Reporting

Anne Elixhauser

anne.elixhauser@ahrq.hhs.gov

March 9, 2010

MONAHRQ – My Own Network, powered by AHRQ
Transforming your health care data into information
about health, costs, and quality of care.

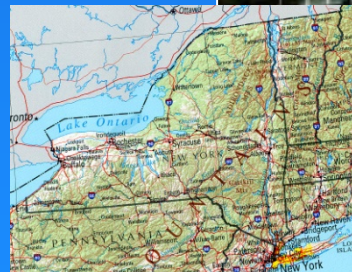
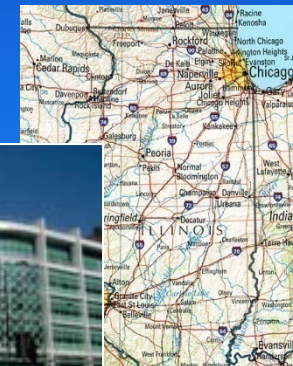


MONAHRQ

Input your data. Output your website.

Rationale

- Why should it be so expensive to generate and put out basic information?
- Why should information be so hard to get?
- Why does every organization have to reinvent the wheel?



From Data to Information to Action



Hospital discharge data are already being collected

Hospital discharge data can generate valuable healthcare information

Information can be used to make decisions

Utilization and costs of care in hospitals

Rates of diseases in particular areas

Quality of care in hospitals

Rates of procedures in particular areas

Preventable hospital stays that indicate breakdowns in care

Key features of MONAHRQ...

Currently based
on hospital
discharge data



Host user downloads
MONAHRQ software from
AHRQ website



Software



Host user
applies
software to
own data
locally



Host user creates
local website on
their own server

MONAHRQ



Host user makes
website available

- **Internally** to better understand own data and to answer questions
- **To member organizations**, e.g., through a password protected site
- **Publicly** to provide information to the community

The End User Website - Demo

State Health Care Information Portal



Skip Navigation Links

[Home](#)

[Quality Indicators](#)

[Utilization Statistics](#)

[Maps](#)

[Rates](#)

[Site Map](#)

[Definitions](#)

Related Links

[AHRQ Website for Quality Indicators](#)

[Medical Dictionary](#)



This website provides information on hospitals in the State Health Care Information Portal for patients, policymakers, and other users of health care information. Choose from the information options below.

<p><u>Quality Indicators for Hospitals</u></p>  <p>Access measures of quality for hospitals using the AHRQ Quality Indicators - measures of patient safety, mortality, utilization, and volume. Compare results by region or by specific hospitals in an easy-to-use format. Or examine detailed statistics by region and hospital.</p>	<p><u>Utilization Statistics by Hospital for Health Conditions and Procedures</u></p>  <p>Access information about numbers of discharges, charges, and length of hospitalization, in specific hospitals, hospitals in geographic regions, or all hospitals in the State Health Care Information Portal. Select patients by medical condition or procedure.</p>
<p><u>Maps by County Showing Potentially Avoidable Hospitalizations</u></p>  <p>Use the AHRQ Preventable Hospitalization Tool to map selected Quality Indicators by county. Estimate the cost savings associated with reducing the level of potentially avoidable hospitalizations. Identify communities for future interventions such as improving preventive and primary care services or improving patient safety.</p>	<p><u>Rates and County Maps of Health Conditions and Procedures</u></p>  <p>Access statistics on prevalence of diseases or medical procedures and identify areas with higher rates by county. Access maps of the rates of conditions and procedures by county.</p>

MONAHRQ Version 1.0

2006 Data in the State Health Care Information Portal

Select the information you want:

- **QUALITY INDICATORS**
- **AVOIDABLE HOSPITALIZATIONS**
- **RATES**
- **UTILIZATION**

Two quality paths to choose from

State Health Care Information Portal



[Skip Navigation Links](#)

[Home](#)

[Quality Indicators](#)

[Utilization Statistics](#)

[Maps](#)

[Rates](#)

[Site Map](#)

[Definitions](#)

Related Links

[AHRQ Website for
Quality Indicators](#)

[Medical Dictionary](#)

Your path: [Home](#) → [Quality Indicators](#)

Would you like to access measures of quality for selected hospitals?

Choose one:

[Information for Consumers](#)

Compare information on hospital quality in an easy-to-use format designed for consumers.

[Detailed Statistics](#)

Conduct a detailed query of information on hospital quality. Related utilization information is also provided. Select detailed statistics to compare information for many hospitals.

[<< Back](#)

[Next >>](#)

**One path for the lay public and
one path for analysts and the
health care profession.**

Consumer path on Quality Indicators

Home Back Print Report Select Report for Copying - Use the Edit menu to Copy and Paste to another application.

[Select to learn how hospitals are classified.](#)

[Select to learn how you can use this information.](#)

Compare hospital scores

When you are choosing a hospital you should look for the hospital that does **Better than Average** on the topics that are most important to you or on as many items as possible.

Death rate shows how often patients who were treated for a particular illness or had a particular procedure died after taking into account how sick they were when in each hospital in 2006.

Rate shows how often a particular procedure was done one way or another after taking into account how sick the patients were. Some hospitals have more patients. This information is noted at the bottom of each chart.

A hospital's score is calculated in comparison to the average of hospitals State Health Care Information Portal.

- **Average** is about the same as the average of hospitals State Health Care Information Portal.
- **Better than Average** is better than the average of hospitals State Health Care Information Portal.
- **Worse than Average** is worse than the average of hospitals State Health Care Information Portal.

Select the indicator names for detailed results on how each hospital performed.

Quality indicator(s) for chosen hospital(s) in 2006

Heart conditions	Hospital 1	Hospital 22	Hospital 24	Hospital 31
Death rate for heart attack patients (Acute myocardial infarction (AMI) mortality rate)	Average	Better than Average	Average	Better than Average
Death rate for patients with congestive heart failure (Congestive heart failure (CHF) mortality rate)*	Average	Average	Average	Average
Death rate for patient having a coronary artery bypass graft (CABG) (CABG mortality rate)	Average	Better than Average	Average	Better than Average
Death rate for patient having a percutaneous transluminal coronary angioplasty (PTCA) (PTCA mortality rate)	Better than Average	Better than Average	Better than Average	Better than Average
Rate of cardiac catheterization procedures on both sides of the heart (Bilateral cardiac catheterization rate)*	Not enough data	Not enough data	Not enough data	Not enough data

*These indicators are endorsed by the National Quality Forum (NQF). Visit www.qualityforum.org to learn more about NQF endorsements.

Home Back Print Report Select Report for Copying - Use the Edit menu to Copy and Paste to another application.

[Select to learn how you can use this information.](#)

**Arrays information on up to
four hospitals for the
indicators selected.
Click on any indicator and
get detailed information in
graphic form.**

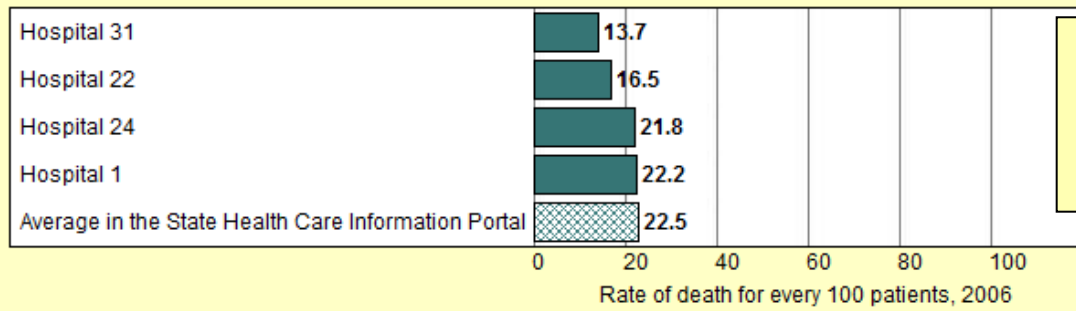
Details in graphic form

Death rate for heart attack patients (Acute myocardial infarction (AMI) mortality rate)

This graph shows how often patients admitted to each hospital after having a heart attack (called *acute myocardial infarction*) died before leaving the hospital. This information is for patients admitted during 2006.

When you are choosing a hospital you should look for the hospital that has a **lower** number of deaths. A **lower** number is shown by a **shorter** bar on the graph below.

Death rate for heart attack patients (Acute myocardial infarction (AMI) mortality rate)



Get details for each hospital in rank order, compared to the state average.

Average: The average rate of deaths of patients who came in after having a heart attack in hospitals in the State Health Care Information Portal. This number is included so you have:

- a better idea of what is typical
- a basis for comparing individual hospitals' performance.

Death rate for patients with congestive heart failure (Congestive heart failure (CHF) mortality rate)*

This graph shows how often patients who were admitted to a hospital because they had heart failure (called *congestive heart failure*) died before leaving the hospital. This information is for patients admitted during 2006.

When choosing a hospital you should look for the hospital that has a **lower** number of deaths

Detailed path on Quality Indicators

[Skip Navigation Links](#)

[Home](#)

[Quality Indicators](#)

[Utilization Statistics](#)

[Maps](#)

[Rates](#)

[Site Map](#)

[Definitions](#)

Related Links

[AHRQ Website for
Quality Indicators](#)

[Medical Dictionary](#)

Your path: [Home](#) → [Quality Indicators](#) → Detail Report - Select Region and Health Topic

Select All Hospitals or a Region and then select a Health Topic

The information is organized into topics of health problems and can be summarized for all hospitals or broken down by region.

All Hospitals Grouped Together

Region

Select a region

- Baltimore
- Morgantown
- Salisbury
- Takoma Park
- Washington

The detailed path provides more information for each indicator.

Heart conditions

This section includes items such as how many adult patients died while hospitalized for heart attacks and how often a hospital performs certain heart-related surgeries or procedures.

Childbirth

Hip replacement and hip fracture

Brain and nervous system

Operations for cancer of the esophagus and pancreas

Other health conditions

Other Operations

Medical complications for adult patients having operations or procedures

Medical complications for all adult patients

Overall results for the state

State Health Care Information Portal

Information on specific indicators for the entire dataset:

- numerators
- denominators
- observed, expected and risk-adjusted rates
- confidence intervals

[Home](#)
[Back](#)
[Print Report](#)
[Select Report for Copying](#)
 - Use the Edit menu to Copy and Paste to another application.

[Select to learn about the methodology.](#)

Click on indicator for hospital-specific information

Quality Indicator Details for the topic **Medical complications for adult patients having operations or procedures.**

Select the quality indicator for information by hospital.

Indicator	Numerator	Denominator	Observed	Expected	Risk-Adjusted	Lower-bound CI	Upper-bound CI
Post-operative hip fracture	24	98902	0.0002	0.0002	0.0003	0.0002	0.0003
Post-operative hemorrhage or hematoma	521	153331	0.0034	0.0027	0.0032	0.0030	0.0035
Post-operative physiologic and metabolic derangements	86	86219	0.0010	0.0010	0.0010	0.0008	0.0012
Post-operative respiratory failure	589	70287	0.0084	0.0095	0.0081	0.0074	0.0088
Post-operative pulmonary embolism or deep vein thrombosis*	2155	153645	0.0140	0.0105	0.0136	0.0131	0.0140
Post-operative sepsis	278	12945	0.0215	0.0112	0.0237	0.0217	0.0257
Post-operative wound dehiscence*	51	27024	0.0019	0.0022	0.0019	0.0013	0.0025
Iatrogenic pneumothorax*	308	531271	0.0006	0.0005	0.0006	0.0005	0.0006

*These indicators are endorsed by the National Quality Forum (NQF). Visit www.qualityforum.org to learn more about NQF endorsements. Values based on 10 or fewer discharges are suppressed to protect confidentiality of patients and are designated with a "c".

[Home](#)
[Back](#)
[Print Report](#)
[Select Report for Copying](#)
 - Use the Edit menu to Copy and Paste to another application.

Results by individual hospital

Quality Indicator Details for the topic Medical complications for adult patients having operations or procedures

PSI11 - Post-operative respiratory failure [Select for these data in a chart](#)

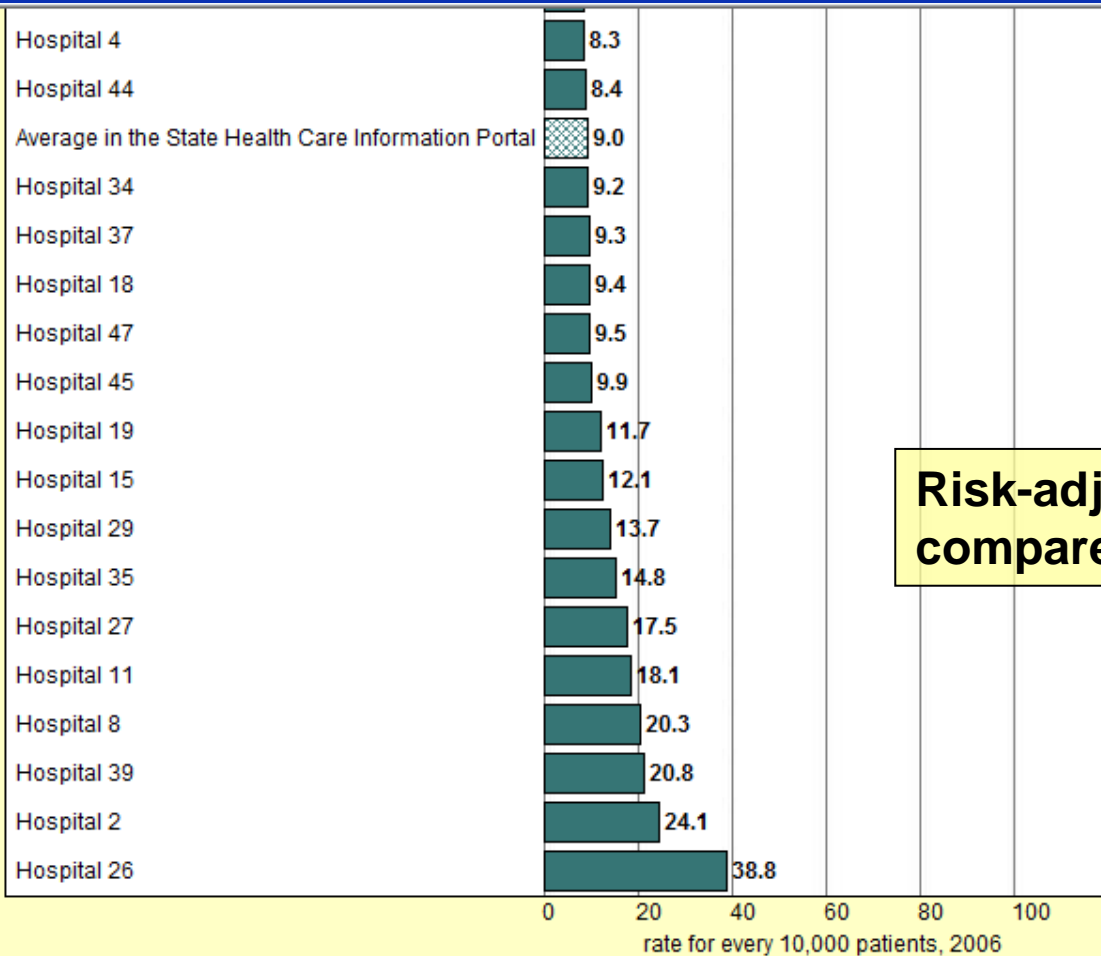
Hospital	Numerator	Denominator	Observed	Expected	Risk-Adjusted	Lower-bound CI	Upper-bound CI
Hospital 1	13	1985	0.0065	0.0096	0.0063	0.0022	0.0105
Hospital 10	Not enough data	Not enough data	Not enough data	Not enough data	Not enough data	Not enough data	Not enough data
Hospital 11	c	c	0.0192	0.0098	0.0181	0.0086	0.0277
Hospital 12	c	c	0.0091	0.0104	0.0081	0.0000	0.0199
Hospital 13	Not enough data	Not enough data	Not enough data	Not enough data	Not enough data	Not enough data	Not enough data
Hospital 14	13	2012	0.0065	0.0090	0.0066	0.0024	0.0109
Hospital 15	c	c	0.0118	0.0090	0.0121	0.0043	0.0199
Hospital 16	c	c	0.0000	0.0126	0.0000	0.0000	0.0820
Hospital 17	19	2430	0.0083	0.0094	0.0041	0.0000	0.0118
Hospital 18	c	c	0.0093	0.0092	0.0094	0.0033	0.0154
Hospital 19	12	1101	0.0109	0.0086	0.0117	0.0058	0.0175
Hospital 2	c	c	0.0000	0.0241	0.0097	0.0000	0.0386
Hospital 20	18	2765	0.0055	0.0087	0.0050	0.0000	0.0109
Hospital 21	c	c	0.0046	0.0090	0.0047	0.0000	0.0138
Hospital 22	20	3757	0.0053	0.0083	0.0053	0.0024	0.0086
Hospital 23	c	c	0.0077	0.0094	0.0076	0.0000	0.0191
Hospital 24	56	6957	0.0081	0.0106	0.0070	0.0049	0.0091
Hospital 25	c	c	0.0000	0.0084	0.0000	0.0000	0.0135
Hospital 26	12	321	0.0374	0.0089	0.0388	0.0281	0.0494
Hospital 27	78	3417	0.0228	0.0120	0.0175	0.0147	0.0203
Hospital 28	c	c	0.0057	0.0080	0.0066	0.0000	0.0154
Hospital 29	c	c	0.0155	0.0105	0.0137	0.0000	0.0291
Hospital 3	12	2699	0.0044	0.0090	0.0045	0.0009	0.0082

Information by hospital on:

- numerators
- denominators
- observed, expected and risk-adjusted rates
- confidence intervals

Institution names can be masked or unmasked.

Click to see data graphically



Risk-adjusted rate by hospital compared to state average

Average: The average rate of patients with breathing failure after surgery in hospitals in the State Health Care Information Portal. This number is included so you have:

- a better idea of what is typical
- a basis for comparing individual hospitals' performance.

Utilization path

State Health Care Information Portal

[Skip Navigation Links](#)

[Home](#)

[Quality Indicators](#)

[Utilization Statistics](#)

[Maps](#)

[Rates](#)

[Site Map](#)

[Definitions](#)

Related Links

[AHRQ Website for Quality Indicators](#)

[Medical Dictionary](#)

This website provides information on hospitals in the State Health Care Information Portal for patients, policymakers, and other users of health care information. Choose from the information options below.

Quality Indicators for Hospitals

Access measures of quality for hospitals using the AHRQ Quality Indicators - measures of patient safety, mortality, utilization, and volume. Compare results by region or by specific hospitals in an easy-to-use format. Or examine detailed statistics by region and hospital.

Utilization Statistics by Hospital for Health Conditions and Procedures

Access information about numbers of discharges, charges, and length of hospitalization, in specific hospitals, hospitals in geographic regions, or all hospitals in the State Health Care Information Portal. Select patients by medical condition or procedure.

Maps by County Showing Potentially Avoidable Hospitalizations

Use the AHRQ Preventable Hospitalization Tool to map selected Quality Indicators by county. Estimate the cost savings associated with reducing the level of potentially avoidable hospitalizations. Identify communities for future interventions such as improving preventive and primary care services or improving patient safety.

Rates and County Maps of Health Conditions and Procedures

Access statistics on prevalence of diseases or medical procedures and identify areas with higher rates by county. Access maps of the rates of conditions and procedures by county.

Utilization statistics
(similar to information
from HCUPnet)

MONAHRQ Version 1.0

2006 Data in the State Health Care Information Portal

Utilization across all conditions, entire state

Home | Back | Print Report | Select Report for Copying | - Use the Edit menu to Copy and Paste to another application.

STATISTICS FOR ALL HOSPITALS COMBINED IN IN THE STATE HEALTH CARE INFORMATION PORTAL BY CCS DIAGNOSIS IN 2006
Click on any column header to re-sort the table by that outcome or characteristic.

CCS Diagnosis		Number of discharges (all-listed)	Number of discharges (principal)	Mean charges in dollars**	Mean costs in dollars**	Mean length of stay in days**
TOTAL U.S. in 2007 (standard error)*		39,541,948 (799,355)	39,541,948 (799,355)	\$26,120 (\$562)	\$8,692 (\$145)	4.6 (0.04)
SOUTH U.S. in 2007 (standard error)*		15,273,297 (594,229)	15,273,297 (594,229)	\$23,695 (\$689)	\$7,888 (\$228)	4.6 (0.06)
All Conditions		751,760	751,760	\$10,290	\$7,566	4.2
218	Liveborn	70,761	70,724	\$4,048	\$3,063	3.6
101	Coronary atherosclerosis	12,216	2,084	\$13,317	\$11,164	2.7
102	Nonspecific chest pain	12,216	2,084	\$13,317	\$11,164	2.7
108	Congestive heart failure, nonhypertensive	82,233	21,440	\$12,355	\$9,204	5.0
657	Mood disorders	10,125	2,277	\$10,125	\$10,125	5.4
122	Pneumonia (except that caused by tuberculosis and sexually transmitted diseases)	49,975	17,395	\$9,099	\$6,821	4.7
2	Septicemia (except in labor)	35,727	16,258	\$18,545	\$14,166	8.2
195	Other complications of birth, puerperium affecting management of the mother	10,239	2,355	\$5,541	\$4,725	2.3
203	Osteoarthritis	35,327	14,430	\$10,280	\$14,328	3.3
237	Complication of device, implant or graft	28,204	4,404	\$19,443	\$13,914	5.8
205	Spondylosis, intervertebral disc disorders, other back problems	45,963	13,193	\$15,415	\$11,846	2.7
197	Skin and subcutaneous tissue infections	31,818	13,094	\$6,736	\$4,994	3.8
106	Cardiac dysrhythmias	118,116	12,885	\$9,371	\$7,101	3.1
193	Trauma to perineum and vulva	1,755	1,755	\$4,526	\$3,599	2.2
238	Complications of surgical procedures or medical care	43,132	11,164	\$12,728	\$9,254	5.3
100	Acute myocardial infarction	11,678	10,594	\$14,661	\$13,382	4.4
109	Acute cerebrovascular disease	11,678	10,594	\$14,661	\$13,382	4.4
127	Chronic obstructive pulmonary disease and bronchiectasis	80,249	10,365	\$8,048	\$6,096	4.3
50	Diabetes mellitus with complications	50,269	10,066	\$10,123	\$7,553	4.4
128	Asthma	62,852	10,058	\$5,896	\$4,440	3.0
55	Fluid and electrolyte disorders	177,187	9,995	\$6,225	\$4,690	3.4
181	Other complications of pregnancy	43,663	9,788	\$4,801	\$3,622	2.3

All conditions for the entire database, listed by number of discharges

- Click on any column header to re-sort by:
- charges/costs
 - LOS
 - percent died or
 - condition/procedure

Utilization on individual conditions...

[Home](#)

[Quality Indicators](#)

[Utilization Statistics](#)

[Maps](#)

[Rates](#)

[Site Map](#)

[Definitions](#)

Related Links

[AHRQ Website for Quality Indicators](#)

[Medical Dictionary](#)

Choose Clinical Classification System (CCS) Diagnosis or Procedure.

You can choose reports for all CCS Diagnoses/Procedures or for a specific CCS Diagnosis/Procedure.

- If you would like information for a specific hospital or region select **Next**.
- If you choose a specific CCS Diagnosis/Procedure, **Data Now** will provide information by demographics (age, gender, and race) summarized across all hospitals.
- If you choose all CCS Diagnoses/Procedures, **Data Now** will provide discharge totals summarized across all hospitals (you may then choose a specific Diagnosis/Procedure for information by demographics).

The [Definitions](#) page provides an explanation of terms used.

Search chosen list for

Choose Information by CCS Principal Diagnosis

Select Diagnosis

- All Diagnoses-
- 1 INFECTIOUS AND PARASITIC DISEASE
 - Tuberculosis (TB)
 - Septicemia (blood infection)**
 - Bacterial infection
 - Mycoses (fungal and yeast infection)
 - AIDS/HIV infection
 - Hepatitis
 - Viral infection

Choose Information by CCS Procedure

Select Procedure

- All Procedures-
- 1 OPERATIONS ON THE NERVOUS SYSTEM
 - Incision and excision of central nervous system (brain and spinal cord)
 - Creation of extracranial ventricular shunt (passage to release spinal fluid)

Can also search for utilization information on individual conditions

... for individual hospitals

[Skip Navigation Links](#)

[Home](#)

[Quality Indicators](#)

[Utilization Statistics](#)

[Maps](#)

[Rates](#)

[Site Map](#)

[Definitions](#)

Related Links

[AHRQ Website for
Quality Indicators](#)

[Medical Dictionary](#)

Your path: [Home](#) → [Utilization](#) → [Medical Condition CCS DX 002](#) → [Hospital or Region](#)

How do you want hospitals grouped?

You can sort information for all hospitals combined, for a specific hospital, or for a region.

If you chose a specific condition or procedure the report will provide information by demographics (e.g., age and gender).

If you chose all conditions or procedures then the report will provide discharge totals for each condition or procedure (you may then choose a specific condition or procedure for information by demographics).

The [Definitions](#) page provides an explanation of terms used.

- Select Information for All Hospitals Combined**
- Select Information by Hospital**

Select hospital

-All Hospitals- ▲
Hospital 1
Hospital 10
Hospital 11
Hospital 12
Hospital 13 ▼

- Select Information by Region**

Select region

-All Hospitals- ▲
Baltimore
Morgantown
Salisbury ▼

Detailed utilization for all hospitals

Home Back Print Report Select Report for Copying - Use the Edit menu to Copy and Paste to another application.

STATISTICS BY HOSPITAL FOR 2 SEPTICEMIA (EXCEPT IN LABOR) (DXCCS 2) IN THE STATE HEALTH CARE INFORMATION PORTAL, 2006

Hospital Name	Hospital County	Number of discharges (all-listed)	Number of discharges (principal)	Mean charges in dollars**	Mean costs in dollars**	Mean length of stay in days**
TOTAL U.S. in 2007 (standard error)*	--	1,338,203 (31,129)	675,391 (17,790)	\$57,543 (\$1,556)	\$18,295 (\$329)	9.1 (0.11)
SOUTH U.S. in 2007 (standard error)*	--	530,491 (20,401)	263,308 (10,618)	\$48,219 (\$1,633)	\$15,816 (\$398)	8.9 (0.14)
ALL HOSPITALS IN THE STATE HEALTH CARE INFORMATION PORTAL	--	35,727	16,258	\$18,545	\$14,166	8.2
Hospital 27	MD - Baltimore	1,805	356	\$39,224	\$12,422	10.2
Hospital 24	MD - Baltimore	1,656	326	\$31,134	\$24,941	9.6
Hospital 5	MD - Prince George's	1,356	669	\$21,699	\$15,864	7.9
Hospital 43	MD - Montgomery	1,312	570	\$22,095	\$18,211	9.5
Hospital 47	MD - Baltimore	1,296	556	\$22,427	\$19,957	8.3
Hospital 50	MD - Montgomery	1,293	604	\$24,800	\$20,425	11.3
Hospital 14	MD - Baltimore	1,263	603	\$21,313	\$16,377	10.8
Hospital 3	MD - Baltimore	1,235	619	\$22,365	\$17,746	9.2
Hospital 18	MD - Prince George's	1,159	573	\$16,824	\$14,121	8.0
Hospital 1	MD - Wicomico	1,158	633	\$14,839	\$10,946	8.5
Hospital 35	MD - Prince George's	1,149	463	\$22,832	\$18,370	10.5
Hospital 49	MD - Montgomery	1,098	664	\$17,057	\$13,011	8.0
Hospital 33	MD - Howard	1,043	513	\$14,864	\$12,596	7.8
Hospital 32	MD - Prince George's	1,040	680	\$14,919	\$11,561	6.2
Hospital 41	MD - Prince George's	1,026	477	\$15,523	\$12,602	8.0
Hospital 11	MD - Baltimore	976	456	\$23,615	\$16,415	9.9

Information on:

- numbers of discharges,
- charges,
- costs,
- length of stay,
- percent died

for all hospitals individually.

National, regional, and state benchmarks included.

More details for individual hospitals

STATISTICS FOR HOSPITAL 27 FOR SEPTICEMIA (EXCEPT IN LABOR) (DXCCS 2) IN THE STATE HEALTH CARE INFORMATION PORTAL, 2006

	Number of discharges (all-listed)	Number of discharges (principal)	Mean charges in dollars**	Mean costs in dollars**	Mean length of stay in days**
TOTAL U.S. in 2007 (standard error)*	1,338,203 (31,129)	675,391 (17,790)	\$57,543 (\$1,556)	\$18,295 (\$329)	9.1 (0.11)
SOUTH U.S. in 2007 (standard error)*	530,491 (20,401)	263,308 (10,618)	\$48,219 (\$1,633)	\$15,816 (\$398)	8.9 (0.14)
ALL HOSPITALS IN THE STATE HEALTH CARE INFORMATION PORTAL	35,727	16,258	\$18,545	\$14,166	8.2
Total	1,805	356	\$39,224	\$12,422	10.2
Age group					
<18	143	36	\$26,323	\$8,337	9.7
18-44	521	100	\$44,449	\$14,077	11.2
45-64	746	144	\$32,307	\$10,545	9.2
65+	395	76	\$36,117	\$11,438	9.4
Gender					
Male	1,056	218	\$41,191	\$13,045	10.8
Female	749	138	\$36,117	\$11,438	9.4
Payer					
Medicare	630	116	\$36,129	\$11,442	9.7
Medicaid	521	117	\$40,532	\$12,837	11.2
Private including HMO	489	86	\$41,418	\$13,117	9.9
Self-pay	93	25	\$29,686	\$9,402	8.0
Other	72	12	\$60,522	\$19,167	12.3
Race					

The same information is available for individual hospitals, by

- age group
- gender
- payer
- race

Potentially Avoidable Hospitalizations

State Health Care Information Portal



[Skip Navigation Links](#)

[Home](#)

[Quality Indicators](#)

[Utilization Statistics](#)

[Maps](#)

[Rates](#)

[Site Map](#)

[Definitions](#)

Related Links

[AHRQ Website for Quality Indicators](#)

[Medical Dictionary](#)

This website provides information on hospitals in the State Health Care Information Portal for patients, policymakers, and other users of health care information. Choose from the information options below.

[Quality Indicators for Hospitals](#)



Access measures of quality for hospitals using the AHRQ Quality Indicators - measures of patient safety, mortality, utilization, and volume. Compare results by region or by specific hospitals in an easy-to-use format. Or examine detailed statistics by region and hospital.

[Utilization Statistics by Hospital for Health Conditions and Procedures](#)



Access information about numbers of discharges, charges, and length of hospitalization, in specific hospitals, hospitals in geographic regions, or all hospitals in the State Health Care Information Portal. Select patients by medical condition or procedure.

[Maps by County Showing Potentially Avoidable Hospitalizations](#)



Use the AHRQ Preventable Hospitalization Tool to map selected quality indicators by county. Estimate the cost savings associated with reducing the level of potentially avoidable hospitalizations. Identify communities for future interventions such as improving preventive and primary care services or improving patient safety.

[Rates and County Maps of Health Conditions and Procedures](#)



Access statistics on prevalence of diseases or medical procedures and identify areas with higher rates by county. Access maps of the rates of conditions and procedures by county.

Potentially Avoidable Hospitalizations

[Home](#)

[Site Map](#)

[Definitions](#)

Related Links

[AHRQ Website for
Quality Indicators](#)

[Medical Dictionary](#)

Prevention Quality Indicators (ambulatory care sensitive conditions)

Chronic Lung Conditions

- [Adult asthma admission rate](#)
- [Chronic obstructive pulmonary disease admission rate](#)

Diabetes

- [Uncontrolled diabetes admission rate](#)
- [Diabetes short-term complication admission rate](#)
- [Diabetes long-term complication admission rate](#)
- [Rate of lower-extremity amputation among patients with diabetes](#)

Heart Conditions

- [Hypertension admission rate](#)
- [Congestive heart failure admission rate](#)
- [Angina without procedure admission rate](#)

Other Conditions

- [Perforated appendix admission rate](#)
- [Dehydration admission rate](#)
- [Bacterial pneumonia admission rate](#)
- [Urinary tract infection admission rate](#)
- [Low birth weight rate](#)

**Potentially Avoidable Hospitalizations –
AHRQ’s Prevention Quality Indicators
(PQIs – ambulatory care sensitive
conditions) and ...**

Potentially Avoidable Hospitalizations

Patient Safety

- ⊕ [Foreign body left in during procedure](#)
- ⊕ [Iatrogenic pneumothorax](#)
- ⊕ [Hospital acquired vascular catheter related infections](#)
- ⊕ [Post-operative wound dehiscence](#)
- ⊕ [Accidental puncture or laceration](#)
- ⊕ [Transfusion reaction](#)
- ⊕ [Post-operative hemorrhage or hematoma](#)

Procedure Rates

- ⊕ [Coronary artery bypass graft rate](#)
- ⊕ [Percutaneous transluminal coronary angioplasty rate](#)
- ⊕ [Hysterectomy rate](#)
- ⊕ [Laminectomy rate](#)

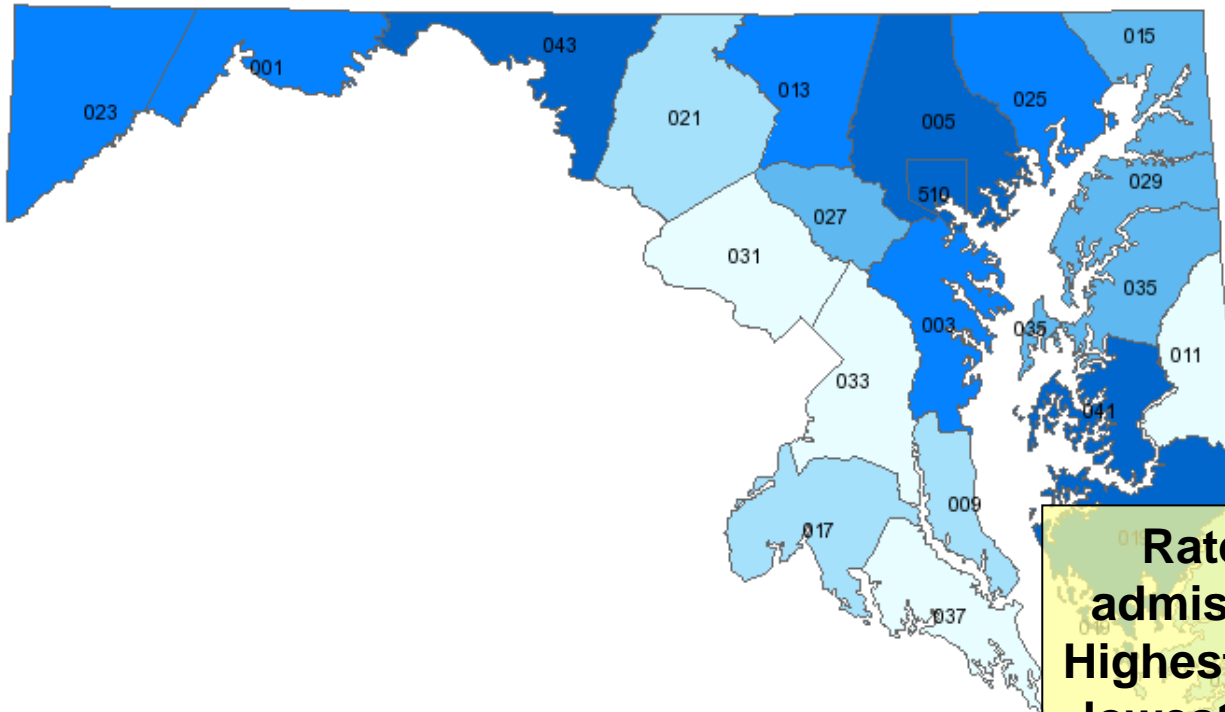
Select All Maps or All Summary Tables Together

- ⊕ [All Maps](#)
- ⊕ [All Summary Tables](#)

... Area-level patient safety
and procedure rates

Potentially Avoidable Hospitalization Path

Accidental puncture or laceration (2006, PSI25)



Rates for avoidable admissions by county – Highest rates in dark blue, lowest rates in light blue

Click on Summary Table for more details

Risk-adjusted rate per 100,000 people

- 25.76 - 28.36
- 29.93 - 37.88
- 38.56 - 51.65



Advancing
Excellence in
Health Care

Potential cost savings – reducing preventable admissions



H·CUP
HEALTHCARE COST AND UTILIZATION PROJECT

Accidental puncture or laceration (2006, PSI25)

[Download data in Mic](#)

County FIPS Code	Name	Numerator	Denominator	Rates per 100,000			Cost savings* with reduction in the numerator of:				
				Observed Rate	Risk Adjusted Rate	SE of Risk Adjusted Rate	10%	20%	30%	40%	50%
24001	MD - Allegany	36	59261	60.75	-	-	65,600	131,200	196,800	262,300	327,900
24003	MD - Anne Arundel	203	386688	52.50	-	-	425,400	850,800	1,276,100	1,701,500	2,126,900
24005	MD - Baltimore	443	610556	72.56	-	-	902,500	1,804,900	2,707,400	3,609,800	4,512,300
24009	MD - Calvert	20	66826	29.93	-	-	66,800	133,600	200,400	267,200	334,000
24011	MD - Caroline	c	c	c	c	c	11,100	22,200	33,300	44,300	55,400
24013	MD - Carroll	75	129184	58.06	-	-	135,500	271,100	406,600	542,200	677,700
24015	MD - Cecil	39	75502	51.65	-	-	117,400	234,900	352,300	469,700	587,200
24017	MD - Charles	32	10384	30.81	-	-	44,200	88,400	132,600	176,800	221,000
24019	MD - Dorchester	19	2486	76.82	-	-	12,900	25,700	38,600	51,500	64,300
24021	MD - Frederick	63	16633	36.08	-	-	92,200	184,400	276,500	368,700	460,900
24023	MD - Garrett	13	2325	55.90	-	-	16,900	33,800	50,700	67,600	84,500
24025	MD - Harford	108	18097	57.47	-	-	207,300	414,600	621,900	829,200	1,036,500
24027	MD - Howard	78	20228	38.56	-	-	187,200	374,500	561,700	748,900	936,200
24029	MD - Kent	c	c	c	c	c	13,100	26,300	39,400	52,600	65,700
24031	MD - Montgomery	186	70239	41.86	-	-	386,200	772,400	1,158,700	1,544,900	1,931,100
24033	MD - Prince George's	161	62488	25.76	-	-	393,600	787,300	1,180,900	1,574,500	1,968,100
24035	MD - Queen Anne's	15	35598	42.14	-	-	16,600	33,200	49,700	66,300	82,900
24037	MD - St. Mary's	20	73878	27.07	-	-	33,100	66,100	99,200	132,200	165,300
24039	MD - Somerset	c	c	c	c	c	15,400	30,900	46,300	61,700	77,100
24041	MD - Talbot	24	28995	82.77	-	-	23,500	46,900	70,400	93,800	117,300
24043	MD - Washington	70	112080	62.46	-	-	147,500	295,000	442,600	590,100	737,600
24045	MD - Wicomico	24	70945	33.83	-	-	42,400	84,700	127,100	169,400	211,800
24047	MD - Worcester	19	39835	47.70	-	-	19,700	39,400	59,100	78,900	98,600
24510	MD - Baltimore City	362	474845	76.24	-	-	727,600	1,455,200	2,182,700	2,910,300	3,637,900

Details on avoidable admissions by county, including cost savings.

Can download to Excel.

Rates of Conditions and Procedures Path

State Health Care Information Portal



[Skip Navigation Links](#)

[Home](#)

[Quality Indicators](#)

[Utilization Statistics](#)

[Maps](#)

[Rates](#)

[Site Map](#)

[Definitions](#)

Related Links

[AHRQ Website for
Quality Indicators](#)

[Medical Dictionary](#)

This website provides information on hospitals in the State Health Care Information Portal for patients, policymakers, and other users of health care information. Choose from the information options below.

Quality Indicators for Hospitals



Access measures of quality for hospitals using the AHRQ Quality Indicators - measures of patient safety, mortality, utilization, and volume. Compare results by region or by specific hospitals in an easy-to-use format. Or examine detailed statistics by region and hospital.

Utilization Statistics by Hospital or Health Condition



Access information about charges, and length of stay for patients in geographic regions or by hospital in the State Health Care Information Portal. Select patients by medical condition or procedure.

Maps by County Showing Potentially Avoidable Hospitalizations



Use the AHRQ Preventable Hospitalization Tool to map selected Quality Indicators by county. Estimate the cost savings associated with reducing the level of potentially avoidable hospitalizations. Identify communities for future interventions such as improving preventive and primary care services or improving patient safety.

Rates and County Maps of Health Conditions and Procedures



Access statistics on prevalence of diseases or medical procedures and identify areas with higher rates by county. Access maps of the rates of conditions and procedures by county.

Rates of health conditions and procedures – Use county populations as the denominator in prevalence rates

Groupings of diagnoses and procedures

[Skip Navigation Links](#)

[Home](#)

[Quality Indicators](#)

[Utilization Statistics](#)

[Maps](#)

[Rates](#)

[Site Map](#)

[Definitions](#)

Related Links

[AHRQ Website for Quality Indicators](#)

[Medical Dictionary](#)

Your path: [Home](#) → Rates of Health Conditions and Procedures

How do you want patients grouped?

There are three ways you can group patients - all patients combined, by MDC/DRG, or by CCS. Additional information is provided below on each option. The [Definitions](#) page provides an explanation of terms used.

[Report by All Patients Combined](#)

Choose this option and select **Next** to get information on discharges and patient characteristics by county.

[Report by the Major Diagnostic Category \(MDC\) / Diagnosis Related Group \(DRG\)](#)

Choose this option and select **Next** to select a specific MDC or DRG for detailed reporting.

For maps of the rates of MDCs or DRGs by county select **All Counties** when asked to choose a geographic region.

Select the link at the top of the table displayed for **Map of Counties**.

[Report by the Clinical Classification System \(CCS\)](#)

Choose this option and select **Next** to select a specific CCS Diagnosis or Procedure for detailed reporting.

For maps of the rates of diagnoses or procedures by county select **All Counties** when asked to choose a geographic region.

Select the link at the top of the table displayed for **Map of Counties**.

[<< Back](#) [Next >>](#)

Can get information on prevalence of conditions or procedures by DRG, MDC, or CCS

Search function

[Home](#)

[Quality Indicators](#)

[Utilization Statistics](#)

[Maps](#)

[Rates](#)

[Site Map](#)

[Definitions](#)

Related Links

[AHRQ Website for
Quality Indicators](#)

[Medical Dictionary](#)

Choose Clinical Classification System (CCS) Diagnosis or Procedure.

You can choose reports for all CCS Diagnoses/Procedures or for a specific CCS Diagnosis/Procedure.

- If you choose all CCS Diagnoses/Procedures **Data Now** will provide information on individual CCS Diagnoses/Procedures summarized across all counties.
- If you choose a specific CCS Diagnosis/Procedure **Data Now** will provide information by demographics (e.g., age and gender) summarized across all counties.
- To choose information by county select **Next**.

The [Definitions](#) page provides an explanation of terms used.

Search chosen list for Found

Choose Information by CCS Principal Diagnosis

Select Diagnosis

Cancer of head and neck
Cancer of esophagus
Cancer of stomach
Cancer of colon
Cancer of rectum and anus
Cancer of liver and bile duct in liver
Cancer of pancreas
Cancer of other gastrointestinal organs and peritoneum (lining of abdominal cavity)
Cancer of bronchial tubes and lung

Search by keyword

Choose Information by CCS Procedure

Select Procedure

-All Procedures-
1 OPERATIONS ON THE NERVOUS SYSTEM
Incision and excision of central nervous system (brain and spinal cord)
Creation of extracranial ventricular shunt (passage to release spinal fluid)
Laminectomy, excision intervertebral disc (back surgery)

Tabular results by county

STATISTICS BY COUNTY FOR 19 CANCER OF BRONCHUS, LUNG (DXCCS 19) IN THE STATE HEALTH CARE INFORMATION PORTAL, 2006

Click on any column header to re-sort the table by that outcome or characteristic.

Hospital County		Number of discharges (all-listed)	Number of discharges (principal)	Rate** of discharges per 100,000 persons (all-listed)	Rate** of discharges per 100,000 persons (principal)	Mean costs in dollars***
TOTAL U.S. in 2007 (standard error)*		568,118 (17,759)	153,017 (5,807)	188.6	50.8	\$15,396 (\$372)
SOUTH U.S. in 2007 (standard error)*		218,547 (10,035)	58,341 (3,018)	198.1	52.9	\$13,607 (\$571)
ALL COUNTIES IN THE STATE HEALTH CARE INFORMATION PORTAL		10,601	2,604	188.8	46.4	\$12,867
24510	MD - Baltimore City	2,049	507	324.5	80.3	\$13,360
24041	MD - Talbot	115	32	318.9	88.7	\$10,761
24001	MD - Allegany	229	52	314.4	71.4	\$11,395
24019	MD - Dorchester	99	27	313.0	85.4	\$3,359
24047	MD - Worcester	72	19	292.6	96.2	\$9,802
24039	MD - Somerset	72	19	279.4	73.7	\$12,846
24005	MD - Baltimore	256	63	256.2	60.1	\$13,593
24029	MD - Kent	255	65	255.2	55.0	\$4,672
24045	MD - Wicomico	234	65	254.4	70.7	\$10,424
24035	MD - Queen Anne's	246	65	246.5	69.2	\$8,948
24011	MD - Caroline	78	21	239.1	64.4	\$8,928
24003	MD - Anne Arundel	1,143	301	224.4	59.1	\$11,776
24015	MD - Cecil	220	57	220.1	48.2	\$14,704
24025	MD - Harford	508	107	210.4	44.3	\$14,159

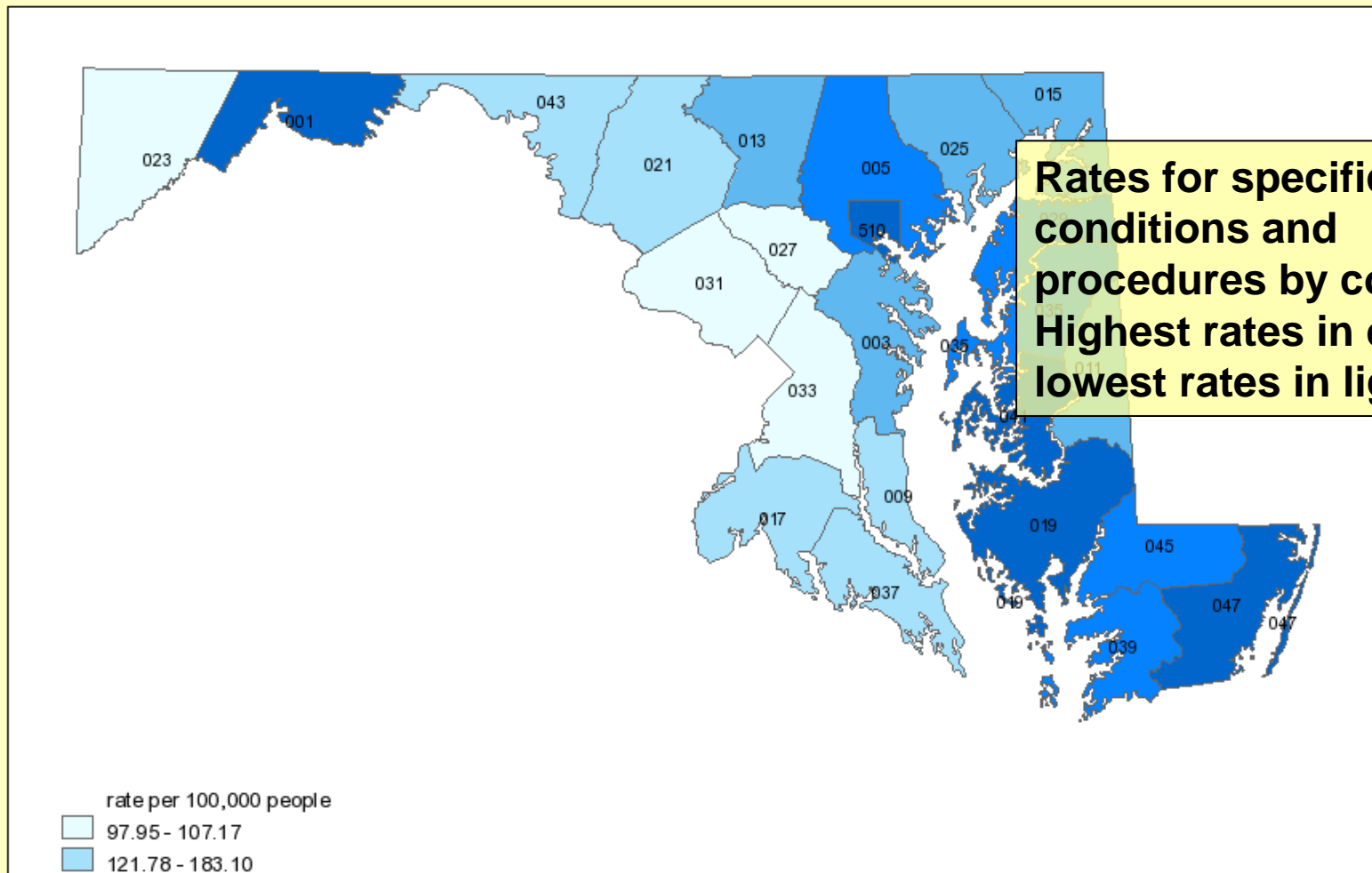
For all counties in the state: numbers of discharges and rate per 100,000 population.

Sort by column headers.

Click on Map to view graphic display.

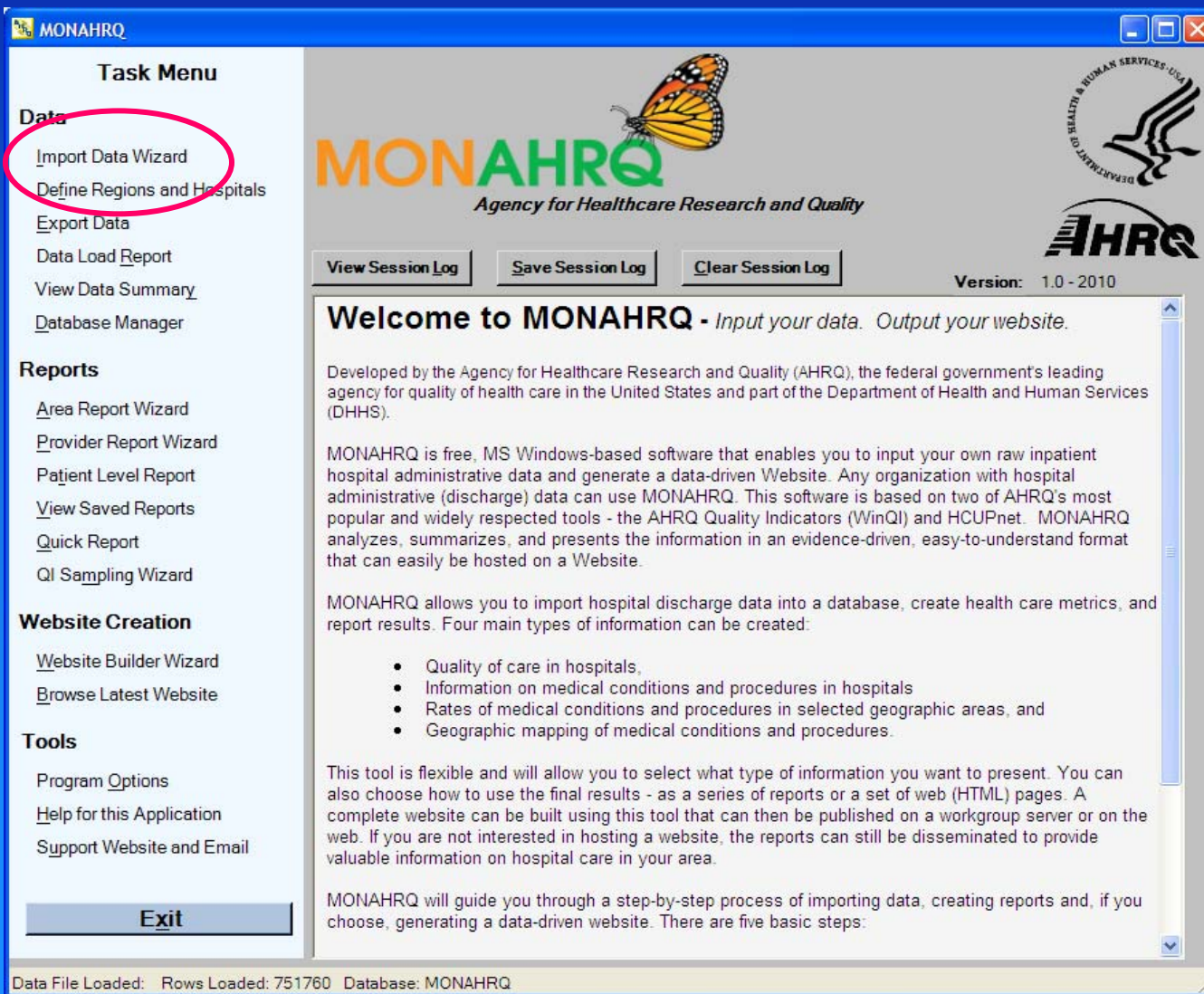
Map of rates by county

Rates by County for Cancer of bronchus, lung (DXCCS 19)
All-listed Diagnoses



Rates for specific conditions and procedures by county – Highest rates in dark blue, lowest rates in light blue

How do you get there?



MONAHRQ

Task Menu

Data

- Import Data Wizard**
- Define Regions and Hospitals
- Export Data
- Data Load Report
- View Data Summary
- Database Manager

Reports

- Area Report Wizard
- Provider Report Wizard
- Patient Level Report
- View Saved Reports
- Quick Report
- QI Sampling Wizard

Website Creation

- Website Builder Wizard
- Browse Latest Website

Tools

- Program Options
- Help for this Application
- Support Website and Email

Exit

MONAHRQ
Agency for Healthcare Research and Quality

View Session Log Save Session Log Clear Session Log

Version: 1.0 - 2010

Welcome to MONAHRQ - Input your data. Output your website.

Developed by the Agency for Healthcare Research and Quality (AHRQ), the federal government's leading agency for quality of health care in the United States and part of the Department of Health and Human Services (DHHS).

MONAHRQ is free, MS Windows-based software that enables you to input your own raw inpatient hospital administrative data and generate a data-driven Website. Any organization with hospital administrative (discharge) data can use MONAHRQ. This software is based on two of AHRQ's most popular and widely respected tools - the AHRQ Quality Indicators (WinQI) and HCUPnet. MONAHRQ analyzes, summarizes, and presents the information in an evidence-driven, easy-to-understand format that can easily be hosted on a Website.

MONAHRQ allows you to import hospital discharge data into a database, create health care metrics, and report results. Four main types of information can be created:

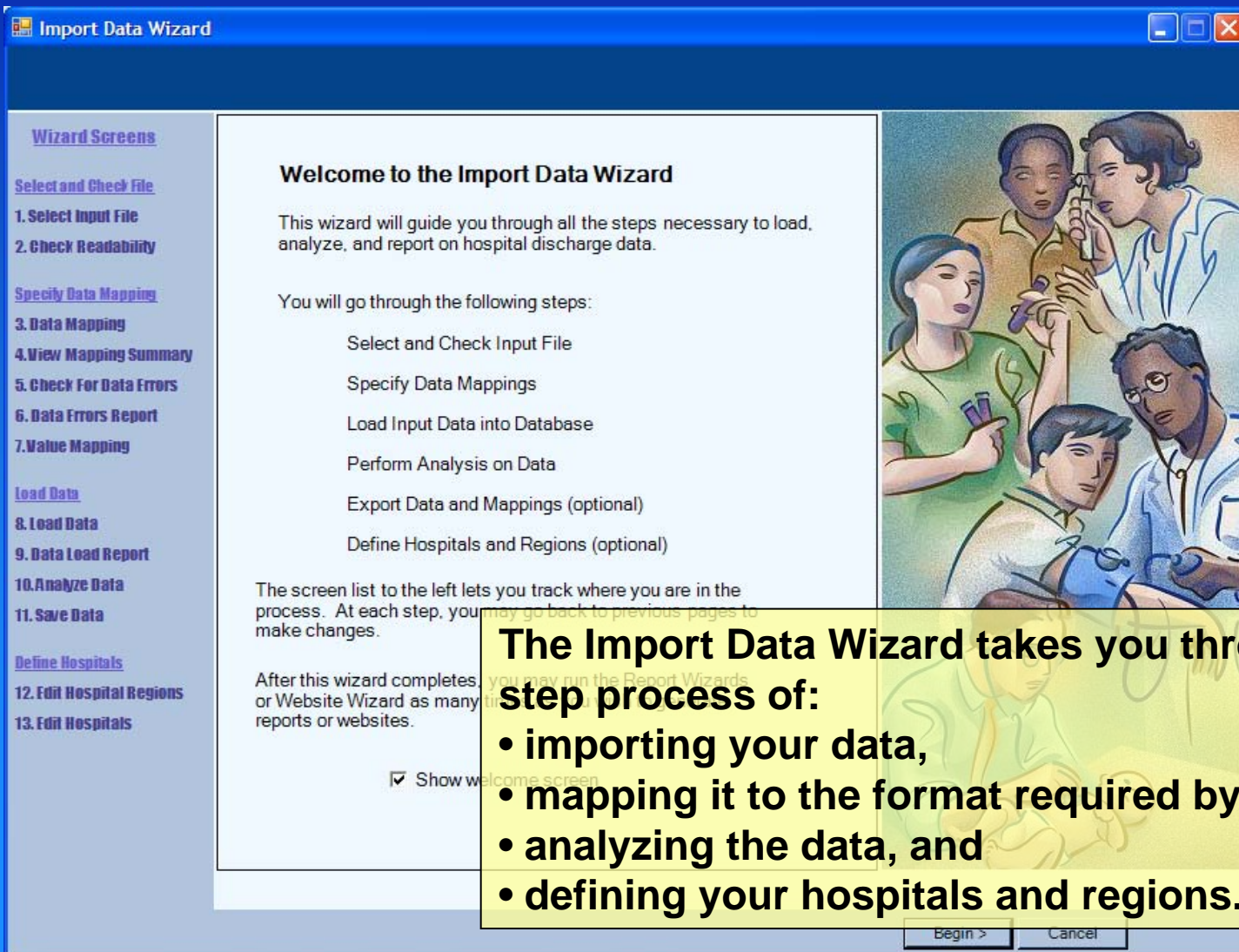
- Quality of care in hospitals.
- Information on medical conditions and procedures in hospitals
- Rates of medical conditions and procedures in selected geographic areas, and
- Geographic mapping of medical conditions and procedures.

This tool is flexible and will allow you to select what type of information you want to present. You can also choose how to use the final results - as a series of reports or a set of web (HTML) pages. A complete website can be built using this tool that can then be published on a workgroup server or on the web. If you are not interested in hosting a website, the reports can still be disseminated to provide valuable information on hospital care in your area.

MONAHRQ will guide you through a step-by-step process of importing data, creating reports and, if you choose, generating a data-driven website. There are five basic steps:

Data File Loaded: Rows Loaded: 751760 Database: MONAHRQ

Import Data Wizard



Welcome to the Import Data Wizard

This wizard will guide you through all the steps necessary to load, analyze, and report on hospital discharge data.

You will go through the following steps:

- Select and Check Input File
- Specify Data Mappings
- Load Input Data into Database
- Perform Analysis on Data
- Export Data and Mappings (optional)
- Define Hospitals and Regions (optional)

The screen list to the left lets you track where you are in the process. At each step, you may go back to previous pages to make changes.

After this wizard completes, you may run the Report Wizards, or Website Wizard as many times as you wish to generate reports or websites.

Show welcome screen

The Import Data Wizard takes you through a step-by-step process of:

- importing your data,
- mapping it to the format required by MONAHRQ,
- analyzing the data, and
- defining your hospitals and regions.

Begin > Cancel

Select your data file

Select Input File

Select Input File

Use the Browse button to locate the data file you want to import. It may be a text file of comma separated values (.csv), a MS Excel file (.xls), or a MS Access Database file (.mdb). You may also directly enter in the specific path to your data file and press TAB.

(Example: C:\data\mydatafile.xls)

Import Data File Options (Specific to File Type)

No File Selected

Data Mapping and Crosswalk

Data Layout Unknown

Use Mapping File:

Skip validation and mapping screens (jump to Data Load)

Map data elements

Data Mapping

Wizard Screens

- Select and Check File
 - 1. Select Input File
 - 2. Check Readability
- 3. **Data Mapping**
- 4. View Mapping Summary
- 5. Check For Data Errors
- 6. Data Errors Report
- 7. Value Mapping

Load Data

- 8. Load Data
- 9. Data Load Report
- 10. Analyze Data
- 11. Save Data

Define Hospitals

- 12. Edit Hospital Regions
- 13. Edit Hospitals

Data Mapping

Map as many MONAHRQ variables to input file variables as possible to optimize results.

Input File Variables <- Drag and Drop Variables MONAHRQ Variables

Input Variable (Column Number: Name)	Maps To MONAHRQ Variable
1: AGE	Age
2: AGEDAY	Age in Days
3: ASOURCE	Admission Source
4: ATYPE	Admission Type
5: AWEEKEND	
6: BWT	
7: DIED	
8: DISPUNIFORM	
9: DQTR	Discharge Quarter
10: DSHOSPID	
11: DX1	Principal Diagnosis
12: DX2	Diagnosis Code 2

Required

- Sex

Optional

- Key
- Patient State/County Code
- Hospital ID
- Discharge Disposition
- Point of Origin
- Days on Mech Ventilator
- Birth Weight Grams
- Diagnosis Code 10
- Diagnosis Code 11
- Diagnosis Code 12

Sample View of Input File Data

	Age	Age in Da	Admissio	Admissio	- 5 -	- 6 -	- 7 -	- 8 -	Discharge - 10 -	Princi
	AGE	AGEDAY	ASOURC	ATYPE	AWEEKE	BWT	DIED	DISPUN		
▶	66		5	3	1		0	6	1	123502
	78		1	1	0		0	6	1	4280
	44		1	1	0		0	1	1	123502
	95		1	1	0		0	6	1	4111
										123502
										486

< Back Next > Cancel

You map your data to the format required by MONAHRQ by clicking and dragging data elements.

Map input values

Crosswalk

[Wizard Screens](#)

[Select and Check File](#)

1. Select Input File

2. Check Readability

[Specify Data Mapping](#)

3. Data Mapping

4. View Mapping Summary

5. Check For Data Errors

6. Data Errors Report

7. Value Mapping

[Load Data](#)

8. Load Data

9. Data Load Report

10. Analyze Data

11. Save Data

[Define Hospitals](#)

12. Edit Hospital Regions

13. Edit Hospitals

Crosswalk - Map Input Values to Value Meanings

The values of the following variables have specific meaning. Choose the description that indicates the meaning of each value in your input file.

Input: ***ASOURCE_X*** --> Dataset: ***Admission Source***

Input Value	Count	Value Meaning	
22	0	0 : Missing	Indicators that rely on this field set to missing for these cases
25	0	0 : Missing	Indicators that rely on this field set to missing for these cases
99	1054	0 : Missing	Indicators that rely on this field set to missing for these cases
24	13	2 : Another hospital	
20	444	2 : Another hospital	
40	765	2 : Another hospital	
41	2920	2 : Another hospital	
42	23	3 : Another fac. incl. LTC	
43	7	3 : Another fac. incl. LTC	
44	50	3 : Another fac. incl. LTC	
45	10	3 : Another fac. incl. LTC	
46	1929	3 : Another fac. incl. LTC	
47	1415	3 : Another fac. incl. LTC	
21	51	3 : Another fac. incl. LTC	
23	1	3 : Another fac. incl. LTC	
26	120	3 : Another fac. incl. LTC	
27	20	3 : Another fac. incl. LTC	
28	5	3 : Another fac. incl. LTC	

< Back Next > Cancel

You then define your data elements to values understood by MONAHRQ (based on UB04 standard).

Load your data

Load Data

Wizard Screens

- Select and Check File
 - 1. Select Input File
 - 2. Check Readability
- Specify Data Mapping
 - 3. Data Mapping
 - 4. View Mapping Summary
- 5. Check For Data Errors
- 6. Data Errors Report
- 7. Value Mapping
- Load Data**
 - 8. Load Data**
 - 9. Data Load Report
 - 10. Analyze Data
 - 11. Save Data
- Define Hospitals
 - 12. Edit Hospital Regions
 - 13. Edit Hospitals

Loading Discharge Data

Loading discharge data for analysis. Any previous data will be deleted. Press Start to begin this process; you may stop it at any time although you will need to start it from the beginning to continue.

Progress

File Size: 86,179 KB	KB Read: 1,981
Status: Loading Data	Records: 18,000
File: ...st_Data\MONAHRQ_Example.csv	

Stats and Warnings

Records Loaded:	-
Records Not Loaded:	-
Percent Loaded:	-
Database Error Messages:	-

(See Session Log)

< Back Next > Cancel

Run analysis

Generate Indicator Flags - RUNNING 13 / 1069 queries completed (DO NOT CLOSE)

Wizard Screens

Select and Check File

1. Select Input File

2. Check Readability

Specify Data Mapping

3. Data Mapping

4. View Mapping Summary

5. Check For Data Errors

6. Data Errors Report

7. Value Mapping

Load Data

8. Load Data

9. Data Load Report

10. Analyze Data

11. Save Data

Define Hospitals

12. Edit Hospital Regions

13. Edit Hospitals

Run Analysis on Data

Press Start to compute the Quality Indicators and calculate rates. You may stop this process at any time although you will need to start it from the beginning to continue.

Current Query

Task: Code Setup

Indicator: - Set age_cat 12

Overall Progress: 13 / 1069 queries completed

Queries To Run					
Task	Indicator	#	Rule Type	Rows	Elapsed
Code Setup	-	1	Default apr_drg null values to 0	125558	0.7
Code Setup	-	2	Set mdr from cms drg	366325	4.0
Code Setup	-	3	Set mdr from ms drg	0	0.3
Code Setup	-	4	Clear Exp Rates	-	0.0
Code Setup	-	5	Set MDC from DRG	0	0.3
Code Setup	-	6	Set MDC from MSDRG	0	0.0
Code Setup	-	7	Default apr_drg null values to 0	0	0.2
Code Setup	-	8	DX Index	-	7.1
Code Setup	-	9	PR Index	-	1.3
Code Setup	-	10	Clear Match DX	-	0.0
Code Setup	-	11	Pop Match DX	934795	13.0
Code Setup	-	12	Set age_cat	366325	2.3
Code Setup	-	13	Set age_day_cat	54141	1.3

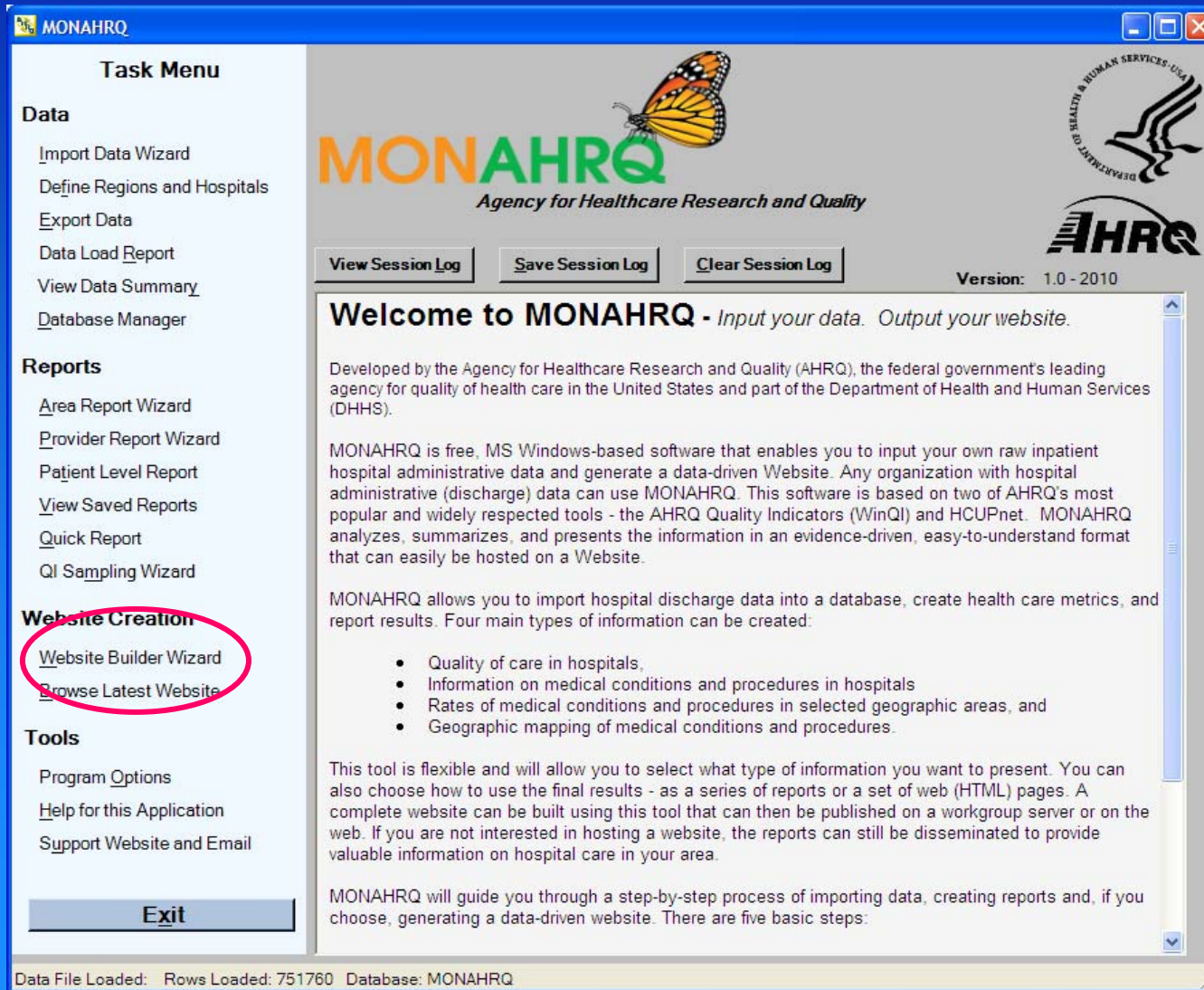
Hospital load

Edit Hospital Table

ID	Name	ZIP	County Name	Region	Discharges	Cost to Charge Ratio	CMS Provider ID
123503	Hospital 1	21801	MD - Wicomico	Salisbury, MD	23062	0.0000	
123504	Hospital 9	21804	MD - Wicomico	Salisbury, MD	111	0.8491	210006
123502	Hospital 39	21740	MD - Washington	Washington, DC	18480	0.6181	210054
123498	Hospital 6	21601	MD - Talbot	Baltimore, MD	10464	0.6951	210038
123506	Hospital 14	21817	MD - Somerset	Salisbury, MD	131	0.8474	210048
123457	Hospital 35	20650	MD - St. Mary's	Washington, DC	10684	0.9013	210035
123459	Hospital 16	20706	MD - Prince George'	Takoma Park, MD	2524	0.6530	210013
123463	Hospital 23	20744	MD - Prince George'	Washington, DC	439	0.0000	
123462	Hospital 28	20735	MD - Prince George'	Washington, DC	2856	0.0000	
123464	Hospital 32	20785	MD - Prince George'	Takoma Park, MD	16079	0.8242	210004
123460	Hospital 8	20707	MD - Prince George'	Takoma Park, MD	969	0.8071	210060
123466	Hospital 13	20832	MD - Montgomery	Takoma Park, MD	10638	0.7749	210023
123465	Hospital 15	20814	MD - Montgomery	Washington, DC	14575	0.7481	210028
123469	Hospital 40	20910	MD - Montgomery	Takoma Park, MD	36089	0.7927	210017
123467	Hospital 46	20850	MD - Montgomery	Washington, DC	3165	0.7311	210015
123470	Hospital 47	20912	MD - Montgomery	Takoma Park, MD	3055	0.7355	210012
123500	Hospital 11	21620	MD - Kent	Baltimore, MD	3921	0.7613	210024
123472	Hospital 31	21044	MD - Howard	Baltimore, MD			
123474	Hospital 21	21078	MD - Harford	Baltimore, MD			
123471	Hospital 7	21014	MD - Harford	Baltimore, MD	2719	0.7935	210011
123497	Hospital 19	21550	MD - Garrett	Morgantown, WV	3067	0.8899	210012
123501	Hospital 34	21701	MD - Frederick	Washington, DC	19650	0.8564	210029
123499	Hospital 27	21613	MD - Dorchester	Salisbury, MD	3410	0.8393	210051

You can mask hospital names and assign Cost to Charge Ratios if you have CMS provider ID.

Build your website



The screenshot shows the MONAHRQ software interface. On the left is a 'Task Menu' with categories: Data, Reports, Website Creation, and Tools. The 'Website Creation' category is circled in red, containing 'Website Builder Wizard' and 'Browse Latest Website'. The main window displays the MONAHRQ logo with a monarch butterfly, the AHRQ logo, and the Department of Health & Human Services logo. Below the logo are buttons for 'View Session Log', 'Save Session Log', and 'Clear Session Log', and the text 'Version: 1.0 - 2010'. The main content area has a heading 'Welcome to MONAHRQ - Input your data. Output your website.' followed by introductory text and a bulleted list of features. At the bottom, it states 'Data File Loaded: Rows Loaded: 751760 Database: MONAHRQ'.

Task Menu

Data

- Import Data Wizard
- Define Regions and Hospitals
- Export Data
- Data Load Report
- View Data Summary
- Database Manager

Reports

- Area Report Wizard
- Provider Report Wizard
- Patient Level Report
- View Saved Reports
- Quick Report
- QI Sampling Wizard

Website Creation

- Website Builder Wizard
- Browse Latest Website

Tools

- Program Options
- Help for this Application
- Support Website and Email

Exit

MONAHRQ
Agency for Healthcare Research and Quality

View Session Log Save Session Log Clear Session Log

Version: 1.0 - 2010

Welcome to MONAHRQ - Input your data. Output your website.

Developed by the Agency for Healthcare Research and Quality (AHRQ), the federal government's leading agency for quality of health care in the United States and part of the Department of Health and Human Services (DHHS).

MONAHRQ is free, MS Windows-based software that enables you to input your own raw inpatient hospital administrative data and generate a data-driven Website. Any organization with hospital administrative (discharge) data can use MONAHRQ. This software is based on two of AHRQ's most popular and widely respected tools - the AHRQ Quality Indicators (WinQI) and HCUPnet. MONAHRQ analyzes, summarizes, and presents the information in an evidence-driven, easy-to-understand format that can easily be hosted on a Website.

MONAHRQ allows you to import hospital discharge data into a database, create health care metrics, and report results. Four main types of information can be created:

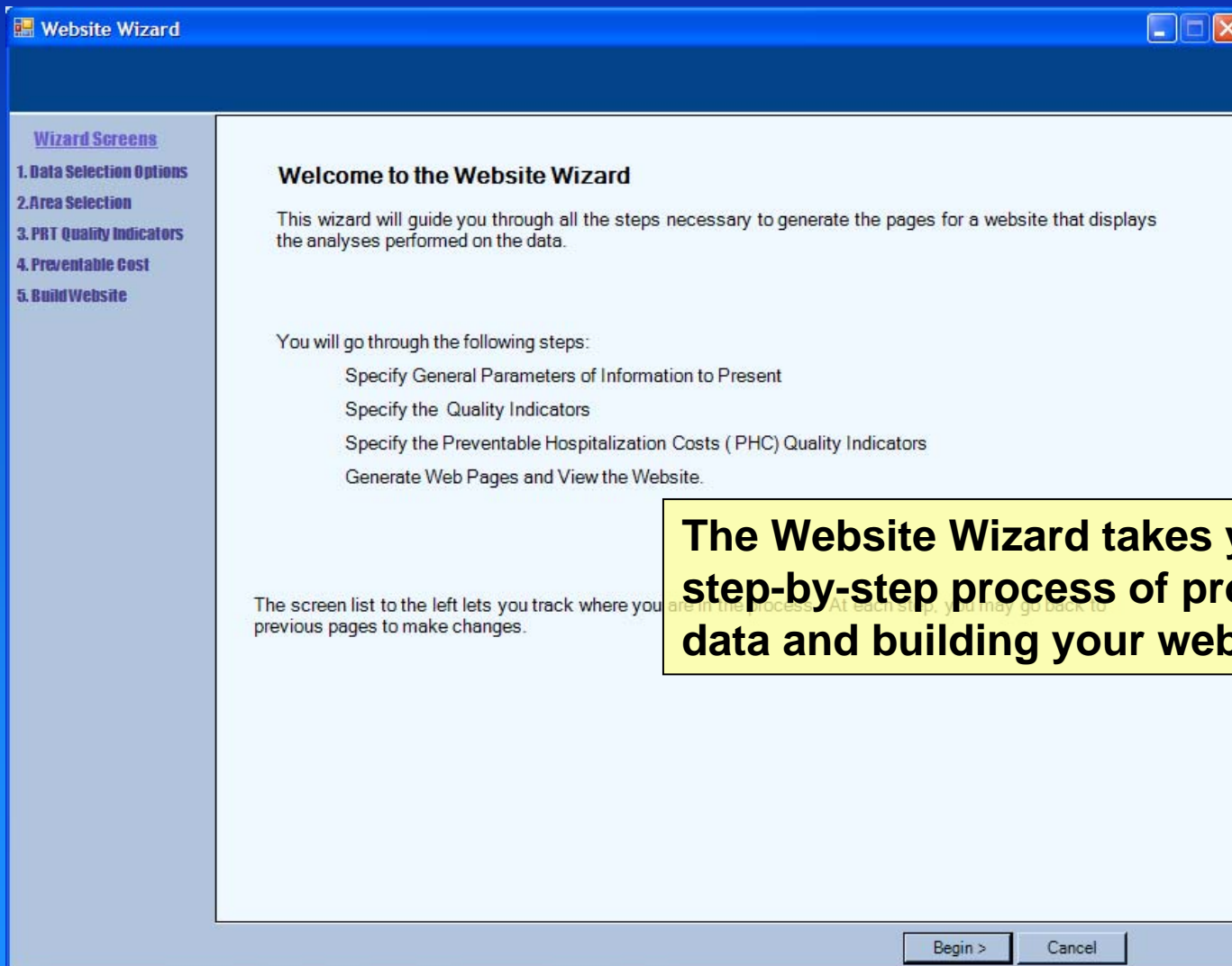
- Quality of care in hospitals.
- Information on medical conditions and procedures in hospitals
- Rates of medical conditions and procedures in selected geographic areas, and
- Geographic mapping of medical conditions and procedures.

This tool is flexible and will allow you to select what type of information you want to present. You can also choose how to use the final results - as a series of reports or a set of web (HTML) pages. A complete website can be built using this tool that can then be published on a workgroup server or on the web. If you are not interested in hosting a website, the reports can still be disseminated to provide valuable information on hospital care in your area.

MONAHRQ will guide you through a step-by-step process of importing data, creating reports and, if you choose, generating a data-driven website. There are five basic steps:

Data File Loaded: Rows Loaded: 751760 Database: MONAHRQ

MONAHRQ Website Wizard



The Website Wizard takes you through a step-by-step process of processing your data and building your website.

Cell suppression and other parameters

Website Wizard

Wizard Screens

1. Data Selection Options
2. Area Selection
3. PRT Quality Indicators
4. Preventable Cost
5. Build Website

Set General Parameters of Information to Present on Website

MD State (Use for area level reporting.)

2006 Year (Reference data year.)

Select the denominator you would like to use in the prevalence of diseases and procedures rates.

1,000 10,000 100,000

0 Discharge Display Suppression Threshold
(Enter zero (0) to disable display suppression.)

Cost to Charge Ratios on Edit Hospital Screen Are Valid
 Show Charges
 Show Costs

Enter a phrase to describe the timeframe of your data to appear on reports. For calendar year 2006 this would be "in 2006". It may also be a specific date range like "from June 1, 2006 through May 31, 2007".

in 2006

Regions defined for your data

Region ID	Region Title	Selected*
112	Wilmington	Y
113	Washington	Y
223	Baltimore	Y
225	Salisbury	Y
226	Takoma Park	Y
445	Morgantown	Y

Set thresholds for cell suppression (to protect confidentiality) and other parameters.

* Change Selected value to 'N' to remove regions from web pages.

< Back Next > Cancel

Select which measures to include in website

Website Wizard

Wizard Screens

1. Data Selection Options
2. Area Selection
- 3. PRT Quality Indicators**
4. Preventable Cost
5. Build Website

Select Public Reporting Template Health Topics and Quality Indicators

Other Operations	Operation Complications	Medical Complications			
Heart	Childbirth	Hip	Brain+Nervous System	Esophagus+Pancreas	Other Conditions

- Death rate for heart attack patients
- Death rate for patients with congestive heart failure*
- Death rate for patient having a coronary artery bypass graft (CABG)
- Death rate for patient having a percutaneous transluminal coronary angioplasty (PTCA)
- Rate of cardiac catheterization procedures on both sides of the heart*

*These indicators are endorsed by the National Quality Forum (NQF). Visit www.qualityforum.org to learn more.

< Back Next > Cancel

Can specify which QIs to include.

Measures endorsed by the National Quality Forum are identified.

Customize your website

Website Generation

Wizard Screens

- 1. Data Selection Options
- 2. Area Selection
- 3. PRT Quality Indicators
- 4. Preventable Cost
- 5. Build Website**

Generate Web Pages

Target Folder:

Pages To Generate

<input type="checkbox"/> Home Pages	<input type="checkbox"/> Utilization and Rates Pages
<input type="checkbox"/> Create Images Folder	<input checked="" type="checkbox"/> Compute Medians (Very Time Consuming)
<input type="checkbox"/> Style Sheet	<input type="checkbox"/> Quality Indicators Pages <input type="button" value="Set QI Benchmarks"/>
<input type="checkbox"/> Header and Footer	<input type="checkbox"/> PHC Maps

Style Sheet Options

Font:

Fixed Size Page - Centered
 Fluid Page

Banner background color:
Banner text color:
Sidebar background color:
Leave sidebar background color blank to use default graphic background.

Header and Footer Options

Entity Name in Site Header:
Browser Title:
Logo Image:
Image Size - Height: Width:

Area Description:
Include any preposition, for example: "in My-State".

Progress Status->

- Specify your website:**
- where it should be stored
 - which pages you want to include
 - specifics about the style
 - insert your logo
 - what the website calls your data

The final product

State Health Care Information Portal



[Skip Navigation Links](#)

[Home](#)

[Quality Indicators](#)

[Utilization Statistics](#)

[Maps](#)

[Rates](#)

[Site Map](#)

[Definitions](#)

Related Links

[AHRQ Website for
Quality Indicators](#)

[Medical Dictionary](#)

This website provides information on hospitals in the State Health Care Information Portal for patients, policymakers, and other users of health care information. Choose from the information options below.

[Quality Indicators for Hospitals](#)



Access measures of quality for hospitals using the AHRQ Quality Indicators - measures of patient safety, mortality, utilization, and volume. Compare results by region or by specific hospitals in an easy-to-use format. Or examine detailed statistics by region and hospital.

[Utilization Statistics by Hospital for Health Conditions and Procedures](#)



Access information about numbers of discharges, charges, and length of hospitalization, in specific hospitals, hospitals in geographic regions, or all hospitals in the State Health Care Information Portal. Select patients by medical condition or procedure.

[Maps by County Showing Potentially Avoidable Hospitalizations](#)



Use the AHRQ Preventable Hospitalization Tool to map selected Quality Indicators by county. Estimate the cost savings associated with reducing the level of potentially avoidable hospitalizations. Identify communities for future interventions such as improving preventive and primary care services or improving patient safety.

[Rates and County Maps of Health Conditions and Procedures](#)



Access statistics on prevalence of diseases or medical procedures and identify areas with higher rates by county. Access maps of the rates of conditions and procedures by county.



MONAHRQ

- ✓ Release version 1.0 in winter 2009/2010
- ✓ Feasibility studies to explore other data and measures
- ✓ Continued development of user interface – usability testing of end user website
- ✓ Continued development of data and website wizard

To get on the mailing list: monahrq@ahrq.gov