

# WNC**HEALTHY**IMPACT

partnering to improve the health of western North Carolina

WNC Healthy Impact is a partnership between hospitals, health departments, and key regional partners in western North Carolina working towards a vision of improved community health. We are working together locally and regionally on a community health improvement process to assess health needs, develop collaborative plans, take coordinated action, and evaluate progress and impact.

This innovative regional effort is supported by hospitals and health departments in the sixteen western counties of North Carolina and coordinated by WNC Health Network and the Western North Carolina Partnership for Public Health.

## WNC Healthy Impact Goals

- **Enhance partnerships** between hospitals and health departments
- **Improve efficiency, quality, and standardization** of community health assessment data collection and reporting
- **Encourage strategic investment** of community resources to address priority health issues
- **Impact health through catalyzing and coordinating action** among existing and new assets and initiatives to address priority health needs
- **Monitor results** to improve process, quality, and outcomes
- **Promote accountability** of hospitals and health departments through meeting community health improvement requirements at state and national level

## Local Efforts & Regional Value

Community health improvement (including health assessment, planning, action, and evaluation) is still a locally-led and implemented process. This regional initiative is designed to support and enhance local efforts by standardizing and conducting data collection, creating reporting and communication templates and tools, encouraging collaboration, providing training and technical assistance, addressing regional priorities, and sharing evidence-based practices. We are using the “Collective Impact” framework to help guide our work on the community health improvement process.

## Timeline

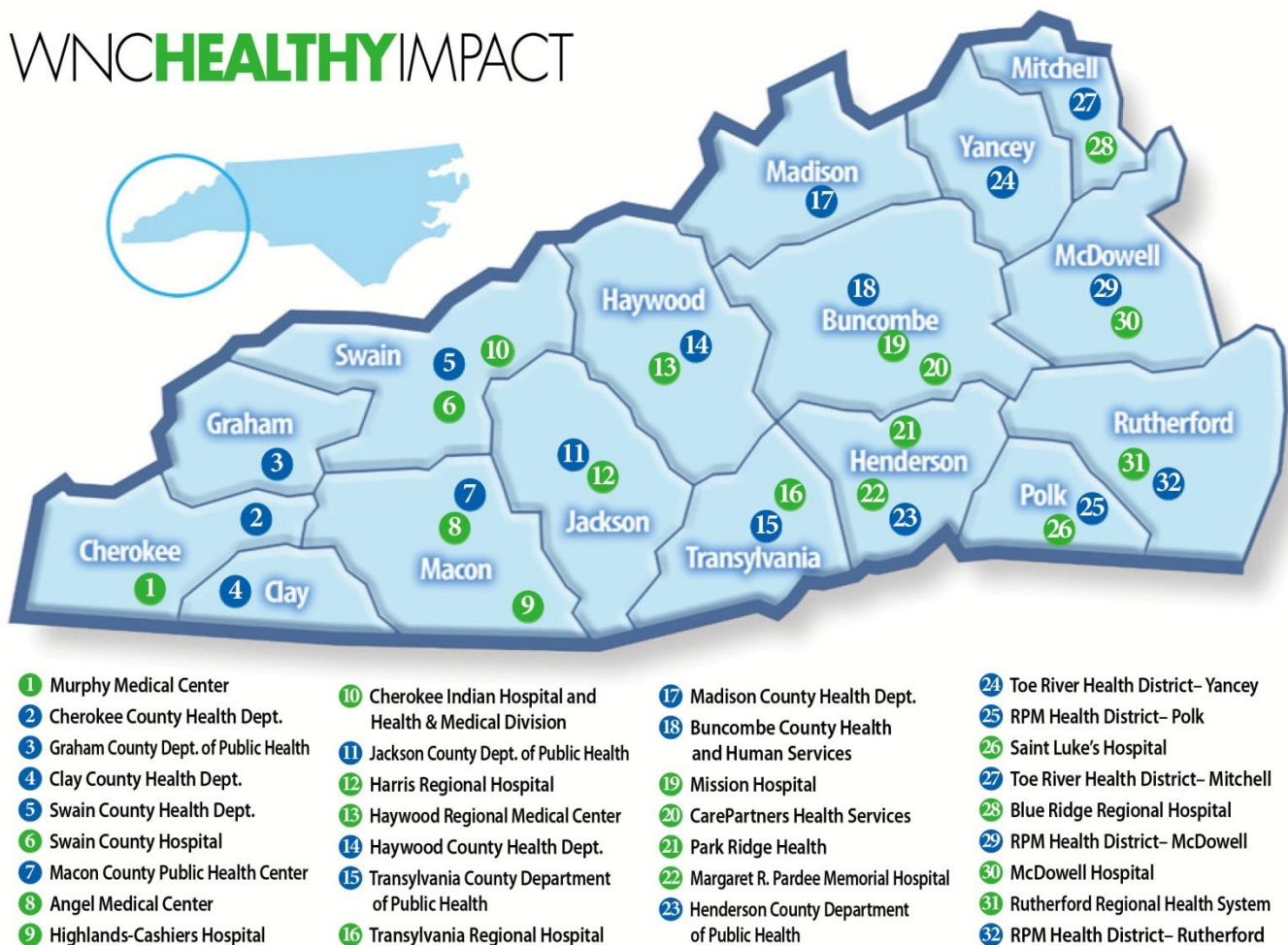
- Region-wide data collection – Summer 2012
- Local-level health assessments – 2012/2013
- Community Health Improvement Plans – 2013
- Hospital Implementation strategy – 2013/2014
- Action & monitoring impact – 2013-2015
- Next community health assessment – 2015/2016



## Regional Structure & Partners

To guide the development of a successful process and meaningful products, this regional collaboration is supported by the leadership of the WNC Healthy Impact Steering Committee, work of task-related regional workgroups, and additional staff time from health departments, hospitals, and regional partners. A team of data consultants, a data collection vendor, and a regional coordinator, are also supporting this regional effort.

In addition to leadership from WNC Health Network and the Western NC Partnership for Public Health, representatives from the NC Center for Health and Wellness at UNC - Asheville and the Western Carolina Medical Society serve on the WNC Healthy Impact Steering Committee. See below for a map and listing of the health departments and hospitals participating in this regional initiative:



## For More Information

For questions about your local community health improvement process, please contact a health educator at your local health department. For more information about WNC Healthy Impact, or to review regional and local reports and plans, please visit us online at: [www.WNCHealthyImpact.com](http://www.WNCHealthyImpact.com).