

# Population Health Research: Meeting the Needs of Rural and Urban Communities

**Sharon L Larson, PhD**

Professor and Executive Director

Main Line Health System  
Center for Population Health  
Research



**Trina Thompson, DrPH**

Associate Professor and Executive Director

1889 Jefferson Center  
for Population Health



# Learning Objectives

- Describe two innovative models for population health research centers
- List three benefits of partnering with a University when establishing a population health center
- Characterize challenges associated with the development of community-engaged and health system embedded, population health research centers

# Population Health and the Learning Health Approach

## Knowing

- Characterizing the groups of people we serve

## Learning

- What are the needs of our populations?
- What are the recommended best practices for addressing health, wellness, and prevention?

## Doing

- Developing relevant strategies and interventions to improve the quality of care and outcomes for our populations in partnership with health care consumers, communities, providers, health care organizations, payers and others

## Learning some more

- Assessing what is working, why it is working, what didn't work and how to remove barriers to success...refine and continue the work

# Who are we?

## Main Line Health Center for Population Health Research



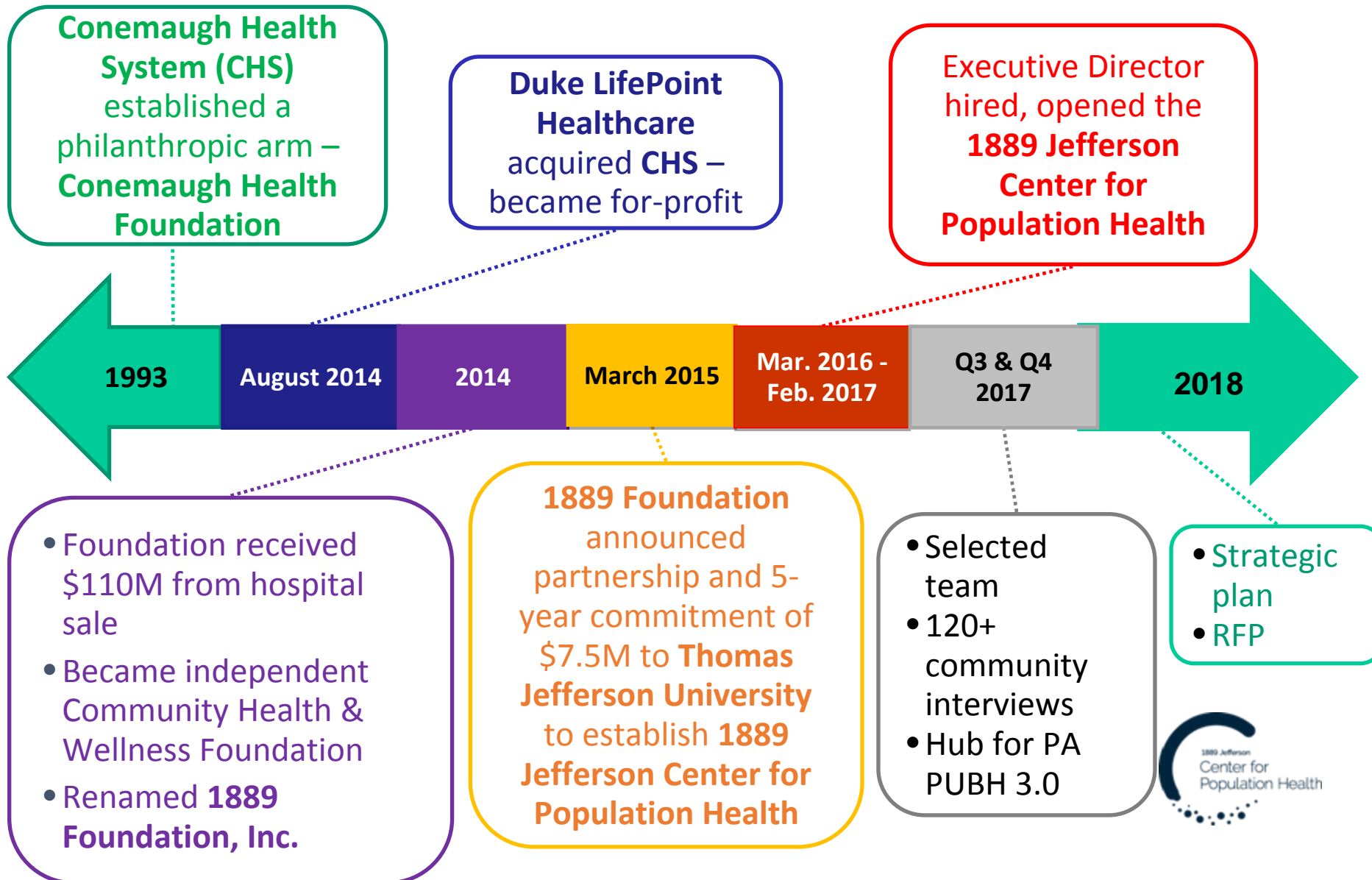
College of Population Health

## 1889 Jefferson Center for Population Health



College of Population Health

# 1889 Jefferson Center for Population Health



# 1889 Jefferson Center for Population Health

## Priorities

- Diabetes
- Obesity & inactivity
- Tobacco (drug & alcohol)
- Mental Health

## Functions

- Facilitate collaboration and communication
- Build capacity
- Manage data and conduct research

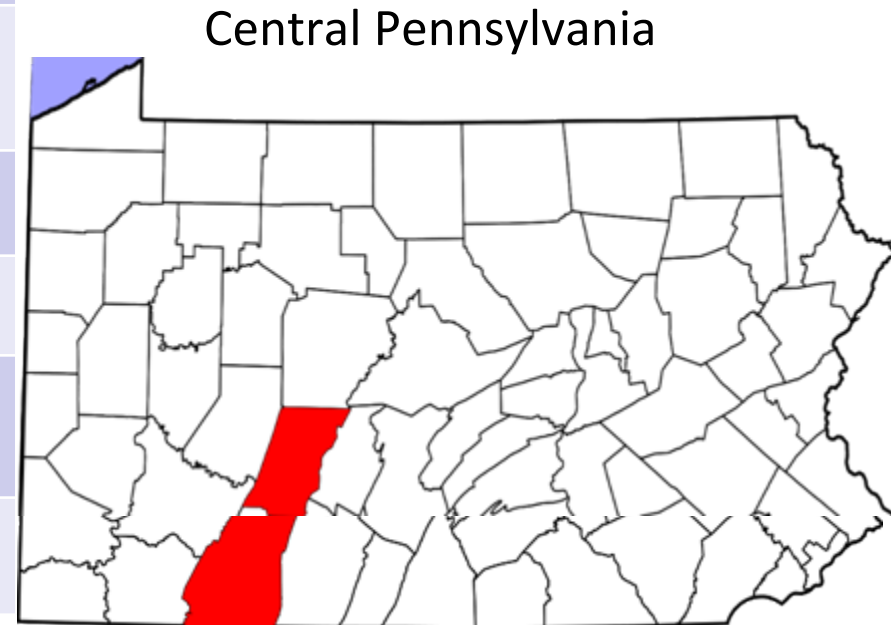
# Governance

- Steering committee
  - 1889 Foundation and Thomas Jefferson College of Population Health
- Community Engagement Teams—grassroots
  - Team leaders: advisory committee
- Department of Health Public Health 3.0 Hub



# County Demographics 2016

Variable	Cambria	Somerset
Population	134,700	75,000
Male	49%	52%
Female	51%	48%
% Poverty	15.6%	14.1%
Median Income	\$43,614	43,938
Population Density sq/mile	200	70
Health Systems	3 for-profit	1 nonprofit



<https://factfinder.census.gov/faces/tableservices/jsf/pages/productview.xhtml?src=bkmk>  
[https://www.census.gov/data-tools/demo/saipe/saipe.html?s\\_appName=saipe&map\\_yearSelector=2016&map\\_geoSelector=aa\\_c&s\\_state=42&s\\_county=42021,42111&menu=grid\\_proxy](https://www.census.gov/data-tools/demo/saipe/saipe.html?s_appName=saipe&map_yearSelector=2016&map_geoSelector=aa_c&s_state=42&s_county=42021,42111&menu=grid_proxy)



# What do we do at 1889 Jefferson?

- Facilitate collaboration among diverse organizations
- Educate community and professionals with goal of changing culture
- Evaluate, collect, and analyze data to improve decision-making and program effectiveness
- Test/research methods and interventions to impact health — disseminate to others

# Community-centric

- Identify, implement, and evaluate interventions that improve health and wellbeing of communities
- FreeListing community engagement interviews
- Request for proposals
- Community education toward cultural change
- Building community engagement teams—grassroots
- Setting up infrastructures for integrating interventions
  - Communities in schools
  - Community health workers
  - RFP for innovative diabetes interventions —avoid reinventing the wheel
- Research opportunities



**Main Line Health<sup>®</sup>**

Well ahead.<sup>®</sup>

# Main Line Health Center for Population Health Research

# About our Health System – Main Line Health

- Founded in 1985, Main Line Health® is a not-for-profit health system serving portions of Philadelphia and its western suburbs.
- Four of the region's most respected acute care hospitals—Lankenau Medical Center, Bryn Mawr Hospital, Paoli Hospital and Riddle Hospital
- Bryn Mawr Rehabilitation Hospital
- Mirmont Treatment Center for drug and alcohol recovery
- Main Line Health Centers including primary care doctors, specialists, laboratory, radiology, rehabilitation and other outpatient services
- Lankenau Institute for Medical Research, a non-profit biomedical research organization

# The Center for Population Health Research in the Main Line Health System

- Represents a Partnership with Jefferson College of Population Health
- Joint steering committee of Main Line Health executive leadership and Jefferson leadership
- Significant study prior to the development of the center by an outside consultancy
- Dr. Norma Padron, Associate Director 2016
- Dr. Sharon Larson, Executive Director 2017

# Center Mission

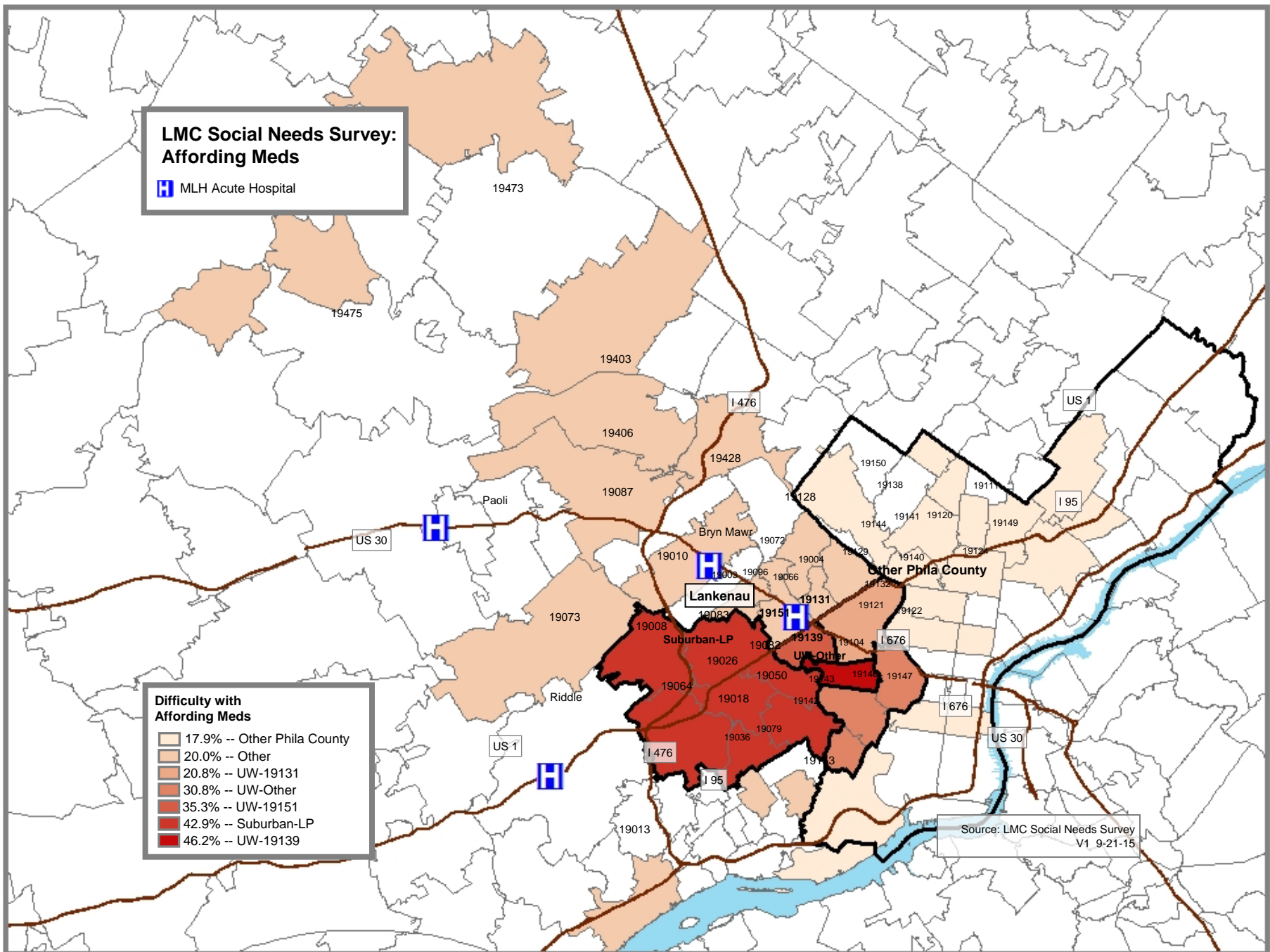
CPHR's mission is to advance the understanding of population health by being a research and educational partner to Main Line Health, informing and assessing initiatives to improve the health status and quality of life in the communities it serves. CPHR's researchers identify effective models to improve population health, as well as build evidence on successful implementation strategies.

### LMC Social Needs Survey: Affording Meds

 MLH Acute Hospital

#### Difficulty with Affording Meds

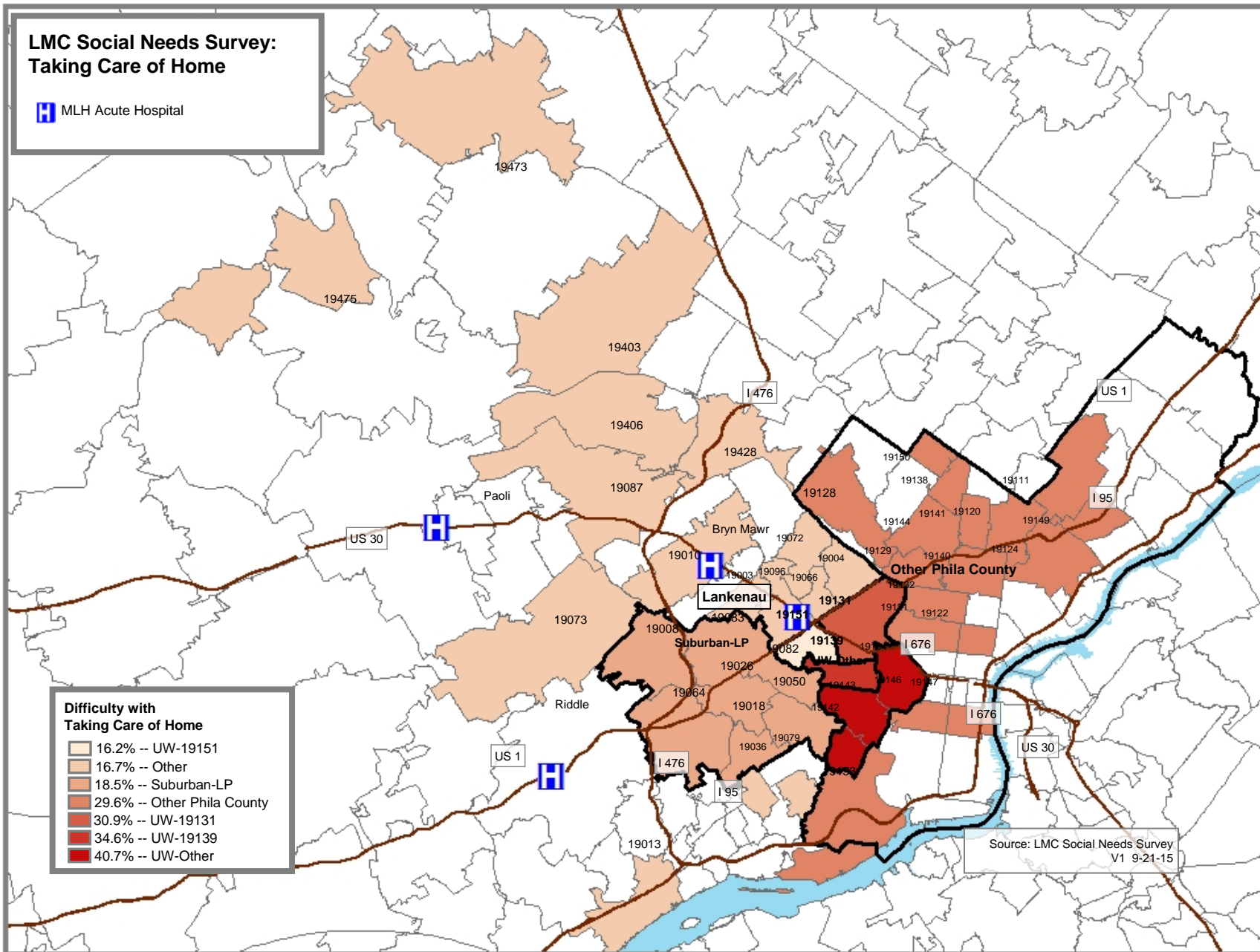
- 17.9% -- Other Phila County
- 20.0% -- Other
- 20.8% -- UW-19131
- 30.8% -- UW-Other
- 35.3% -- UW-19151
- 42.9% -- Suburban-LP
- 46.2% -- UW-19139



Source: LMC Social Needs Survey  
V1 9-21-15

### LMC Social Needs Survey: Taking Care of Home

 MLH Acute Hospital

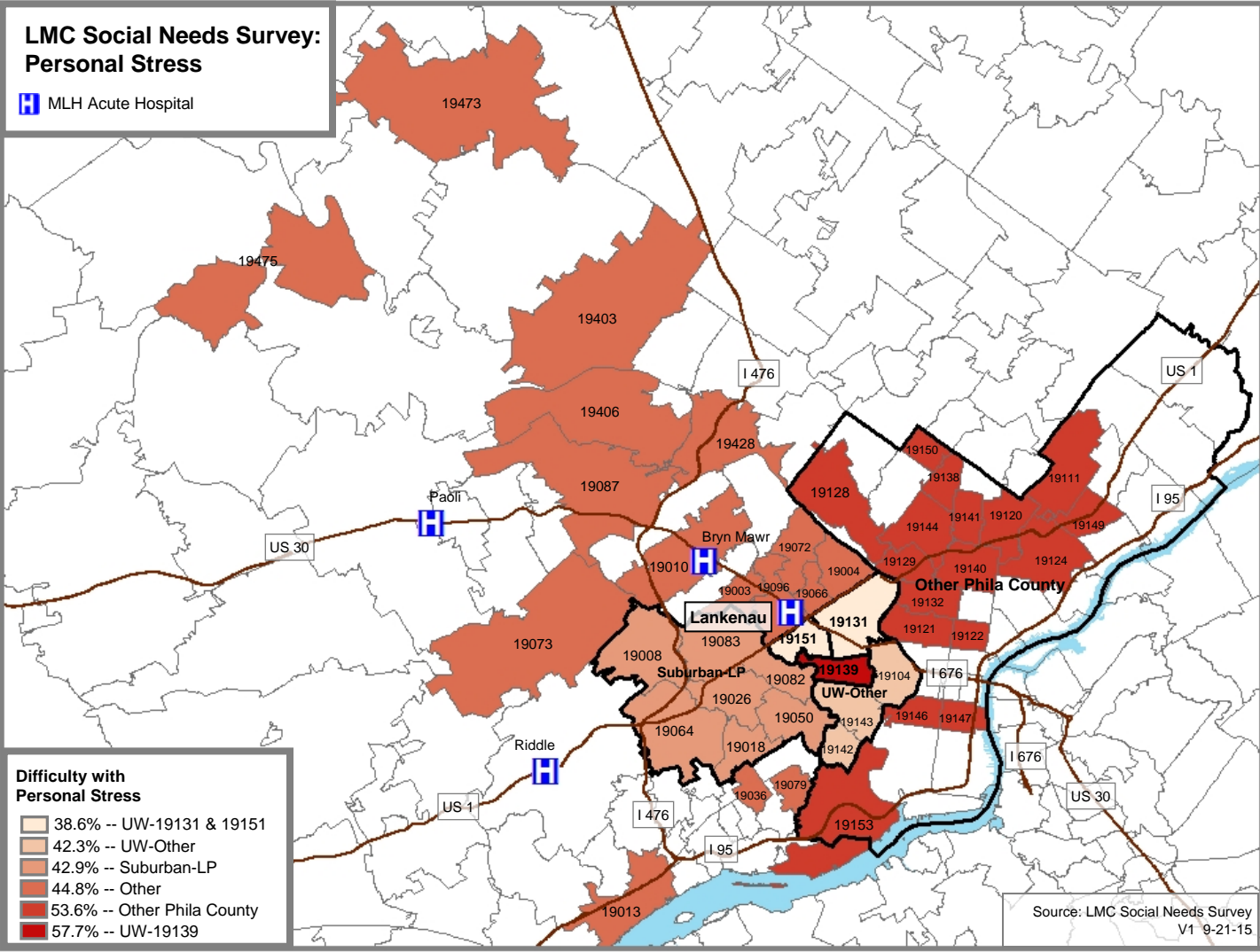


**Difficulty with Taking Care of Home**

Lightest Orange	16.2% -- UW-19151
Light Orange	16.7% -- Other
Medium Orange	18.5% -- Suburban-LP
Dark Orange	29.6% -- Other Phila County
Red-Orange	30.9% -- UW-19131
Dark Red	34.6% -- UW-19139
Darkest Red	40.7% -- UW-Other

Source: LMC Social Needs Survey  
V1 9-21-15





# What are we doing at Main Line CPHR?

- Harm reduction among opioid substance abusers
- Depression care pathways
- Human trafficking– a project developed by a group of nurse residents
- Emergency department utilization
- Women's heart health
- Cancer and the value of care coordination
- Promoting health professions among under represented minority students
- Building partnerships with clinicians and clinical departments

# Mountains we are climbing CPHR

- New tools for research
- Identifying the silos and potential partners
- Partnerships with the clinical enterprise
- Data access
- Data development
- ‘Kid in the candy shop’ syndrome—Figuring out the questions
- Staffing
- Funding—internal and external

# Mountains we are climbing 1889 Jefferson

- Focus: data vs. community story
- Partnerships with community organizations
  - For-profit hospital
- Transforming silos to collaboration—changing culture and territorial conflicts
- ‘Kid in the candy shop’ syndrome—selecting the focus
- Staffing challenges
- External matching funds to 1889 Foundation funding
- Frequent target of funding requests