



## Nineteenth Population Health Colloquium

Loews Philadelphia Hotel  
March 18 - 20, 2019



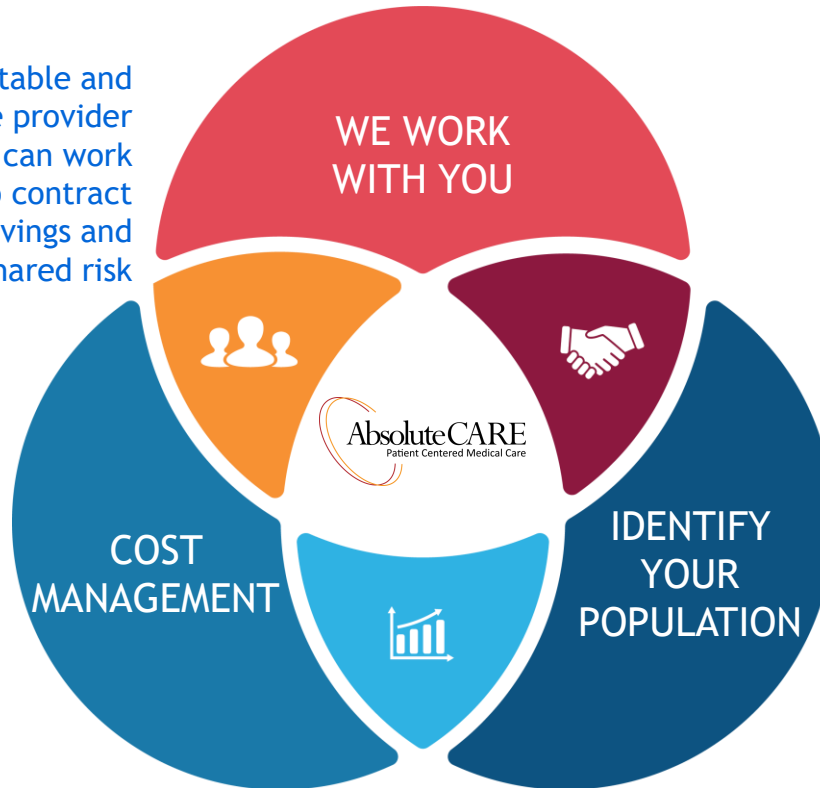


<https://vimeo.com/215514684>

# What we can provide

## HOW ABSOLUTECARE IS A “BEST SOLUTION” FOR TODAY’S PAYERS

We are a stable and appropriate provider partner, that can work with payers to contract for shared savings and shared risk



We understand the payers need to bend the cost curve, and we **STRICTLY FOCUS** on managing the top 1-3% of chronic adults in the high risk populations that account for 30% to 40% of all cost

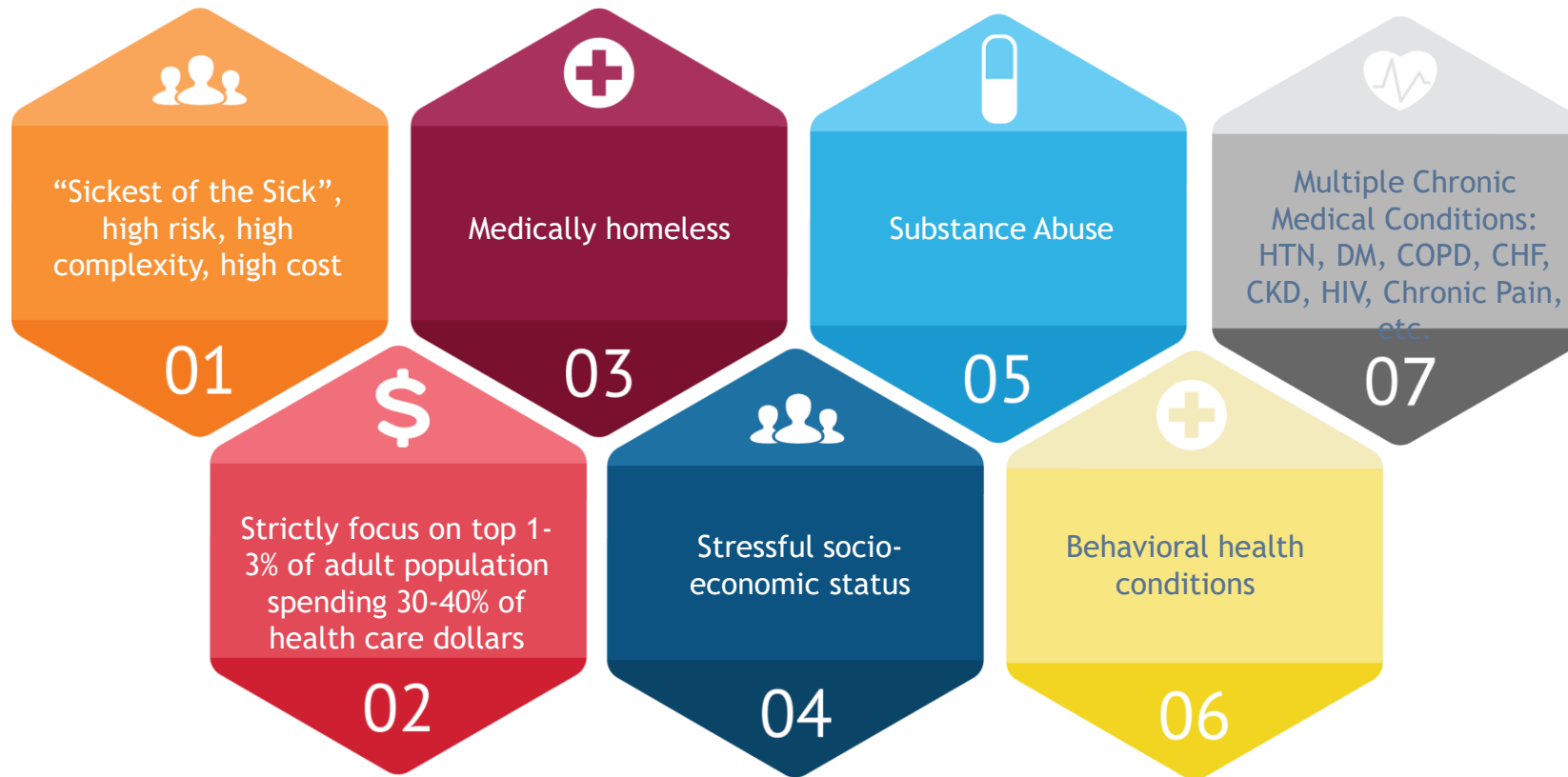
We help the payers identify the eligible population, “WatchList” through our proprietary analytics and extensive experience

# Our history

- **2000:** Established as an HIV Center of Excellence in Atlanta, Georgia
- **2009:** Expanded to include chronic and primary care services
- **2011:** Expanded to 23,000 sq. ft. facility in Atlanta
- **2014:**
  - Awarded NCQA - PCMH Level 3
  - Baltimore, MD Operation Opens
- **2017:** Prince George County, MD Operation Opened
- **2018:**
  - Philadelphia Operation Opened
  - University of Maryland Medical Center C3 Partnership (2<sup>nd</sup> Baltimore, MD Operation)
  - HITRUST Certification
- Expansion to 10 more offices over next 5 years

# AbsoluteCARE's care model

A TRUE Ambulatory ICU



## AbsoluteCARE's population experience:

- High cost members can be identified by their chronic conditions, disabilities, and current and past utilization.
- Many chronic members are high cost more than one year in a row.
- Cost trend within an identified high cost population will depend more on the history of the members being high cost over time, rather than on the specific diseases, co-morbidities or socio-economic stresses of the individual members.
- The high cost history of the individual patients in a population of high cost members must be understood to determine future high cost behavior of the population.

# AbsoluteCARE's integrated services

- Primary Care
- Immediate Care
  - Same Day Access
- Infusion and Acute Services
- Integrated Behavioral Health
  - SUD/Suboxone
- Care Management
- Social Work
- Nutrition
- Radiology
- Onsite Laboratory
- Transitional Care Coordination
- Community Outreach
- Education and Support
- Transportation
- Pharmacy
  - MTM
- Medical Economics Team

# AbsoluteCARE's integrated services

## TRULY CHANGING LIVES!

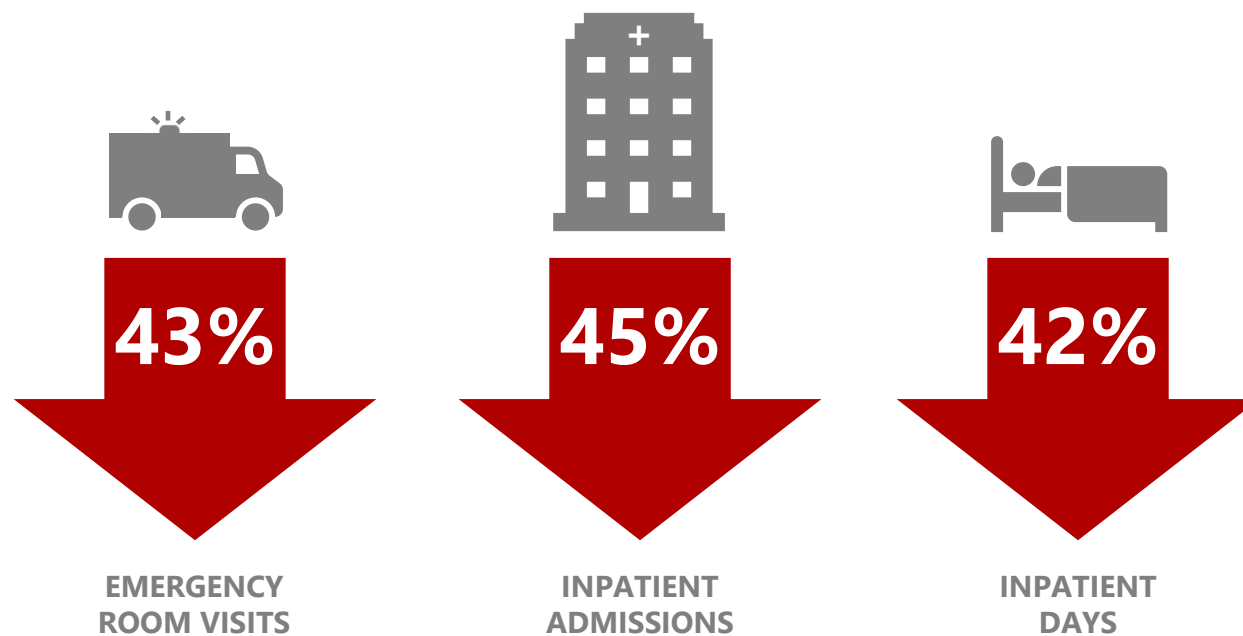
- High Focus On:
  - **Social Determinants**
  - Housing
  - Financial Support
  - Social Support
  - Education level and Comprehension
  - **Mental Health**
  - Substance Use
  - Family Structure
  - **Education**
- **5-Star Service**
- **Respect and Trust**
- Beautiful facility
- Medical Economics Team
  - Interface with health plan
  - Feed care teams actionable reports



## AbsoluteCARE's provider care team

- Primary provider: physician or nurse practitioner
  - Much smaller member patient panel max (250 Members)
  - Case Managers, integrated into care team with:
    - Social Work, Mental Health, SUD, MTM, Outreach-Community Health Worker
  - Medical Assistant
  - Average of 10 patient encounter per day
- Morning huddle
- Monthly extended team meeting for panel review

# Outcomes



# Quality outcomes

