



MHQP's Performance Reporting for Quality Improvement

Barbra G. Rabson

MHQP Executive Director

August 23, 2005

2005 Toyota Prius



Commonwealth Fund National Survey of Physicians and Quality of Care in 2003

One one-third of physicians reported receiving access to any data (process, outcome or patient surveys) about the care they provide

A Audet et al, “Measure, Learn and Improve: Physicians’ Involvement in Quality Improvement” *Health Affairs* 24, no.3 (2005) 843-853

MHQP Statewide Comparative Clinical Quality Reports (SCCQR)

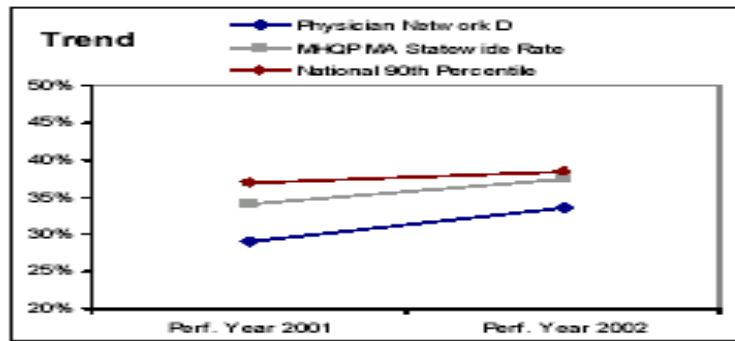
Physician Network D HEDIS 2003 Commercial Products

Chlamydia Screening in Women Ages 16 to 20

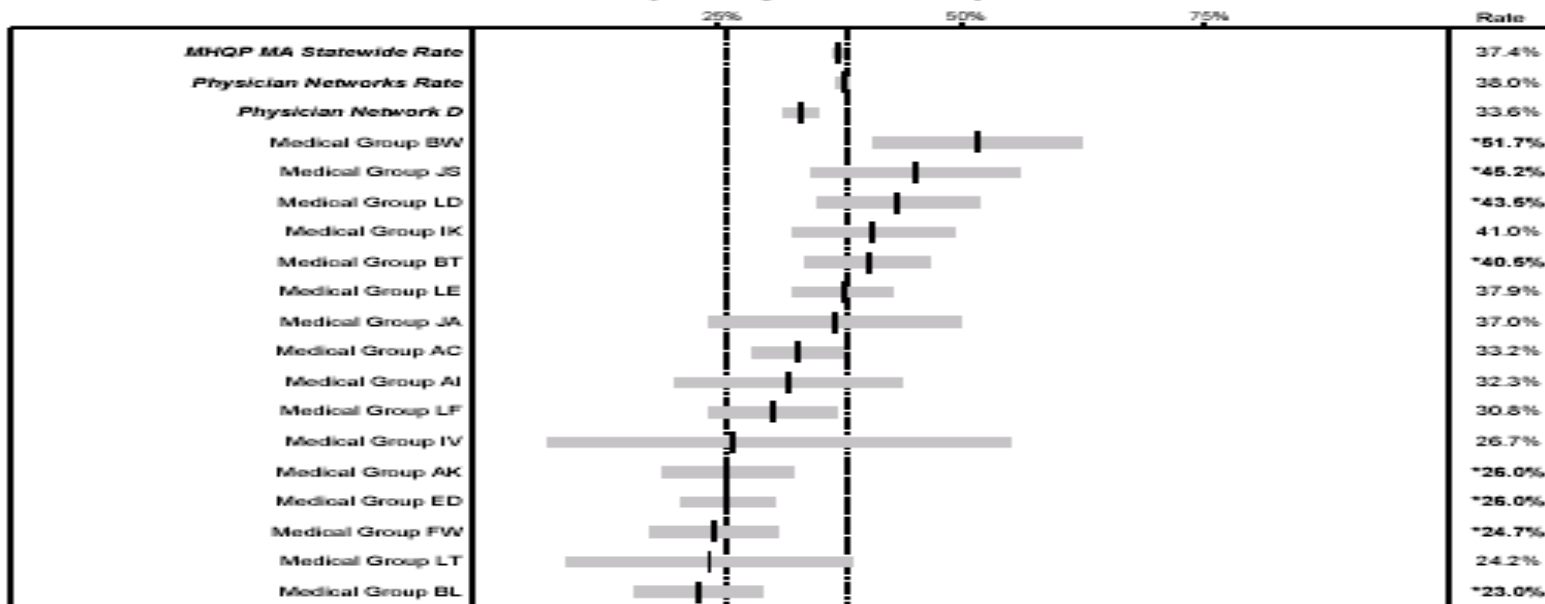
Description of Measure: The percentage of women, ages 16 to 20, who were members of one of the five participating health plans, had claims-based evidence of sexual activity and received a test for chlamydia during the measurement year.

Clinical Impact: About 40% of women with untreated chlamydia infections develop PID. Twenty percent of those who develop PID become infertile and 9% have a life-threatening pregnancy. There is an association between chlamydia infection and cervical cancer. Up to 75% of infected women are unaware of their chlamydia infection because there are no discernable symptoms. Unaware and untreated, they remain infected and contagious.

The costs of treating the consequences of untreated chlamydia are enormous. The CDC estimates that every dollar spent on chlamydia testing and treatment saves \$12 in complications arising from untreated chlamydia. High cure rates can be achieved at a very low cost (\$2-\$8).



Percent of women ages 16-20 having claims-based evidence of sexual activity who received a test for chlamydia during the measurement year



95% confidence limits → Rate ↗

Physician Network D: n = 2614

* Significantly different than Physician Network D (p<0.05)

WELL-ADOLESCENT VISIT RATE AGES 11 TO 18

The Percent Of Adolescents, Ages 11 To 18, Who Had An Annual Well-Adolescent Visit At The Appropriate Time Interval.

Click on a column heading to reorder the results below.

Physician Network	Comparison	Rate	Rating
Nat'l Benchmarks:			
50th Percentile	▼	35.9%	
90th Percentile	▼	53.8%	
Baycare Health Partners		62.8%	★★
CareGroup Provider Service Network		67.2%	★★
Caritas Christi Health Care Systems		62.4%	★★
Fallon Clinic		56.0%	★★
Harvard Vanguard Medical Associates		71.7%	★★★
Lahey Clinic		72.9%	★★★★
Partners Community Health Care		71.7%	★★★★
Primary Care, L.L.C.		47.0%	★
UMass Memorial Health Care		60.4%	★★

Click on a network to view all their results

MA Rate (67.5%)

Conclusions

- Performance feedback is essential in behavior change
- EHRs should be designed to allow physicians to track their own performance
- We need to begin to engage consumers in a conversation about quality, including the importance of EHRs to support high quality care

For more information about
MHQP...

Barbra Rabson, *Executive Director*

rabson@mhqp.org

617-972-9071

www.mhqp.org

