

Disease Management: Purchaser Initiative and Quality Strategy

***Presented by
Julie Harmata Booth, MS, CPHQ, RHIA
Director, Outcomes Measurement & Improvement
Motion Picture & Television Fund***

In 1921, a heartfelt inspiration of entertainment industry visionaries, including Charlie Chaplin, Mary Pickford, Douglas Fairbanks realized the need for reaching out to those in the entertainment industry who fell upon hard times.

The Motion Picture & Television Fund (MPTF) began with a simple coin box in Hollywood where industry workers would deposit spare change for their fellow colleagues.

Right from the start, our mission has been:

"We Take Care of Our Own."

In 1940, Jean Hersholt found the property for the future Motion Picture & Television Hospital in Woodland Hills, California. It was 48 acres of walnut and orange groves, selling for \$850 per acre!

MPTF has flourished into a comprehensive service organization which operates five outpatient health centers throughout the greater Los Angeles area; a fully licensed, 256-bed acute-care hospital; an Alzheimer's unit, a retirement community, an aquatic rehab center and much, much more.

DID YOU KNOW WE'RE NOT THE SAME?

Although we are two separate entities, Motion Picture Industry Pension and Health Plans and Motion Picture & Television Fund work collaboratively to provide quality benefits and affordable care for MPI Health Plan Participants.



818 or 310.769.0007
www.mpiphp.org

Mission

The Plans exist to improve the quality of the lives of skilled professionals in the motion picture industry by enabling them to enjoy optimal health, and financial security during retirement years.

Motion Picture Industry Pension Plan

The Pension Plan is a defined benefit pension plan that provides its qualified, retired Participants with a fixed monthly benefit payable for the Participant's lifetime. It also may be payable to a Beneficiary following the Participant's death.

Motion Picture Industry Individual Account Plan (IAP)

The IAP is a defined contribution plan available to qualified Participants since 1979. The IAP provides a lump sum or annuity benefit payable to the Participant at retirement or to the beneficiaries as a death benefit.

Motion Picture Industry Health Plan

The Health Plan provides an extensive package of benefits that includes:

- ◆ comprehensive medical
- ◆ hospital
- ◆ prescription drug
- ◆ vision
- ◆ dental *and*
- ◆ life insurance

These Collectively Bargained, Jointly Trusteed Labor-Management Trusts are exclusively for employees of the motion picture industry. Participation in these plans is automatic when the Participant works for an employer covered by the Plans, and has attained the required number of hours.



Motion Picture
& Television
Fund
Taking Care of Our Own™

800.876.8320
www.mptvfund.org

Mission

To enrich the lives of people in our Southern California entertainment community by continuously evolving to meet their health and human services needs. We are dedicated to offering programs and charitable services which are provided with compassion and respect for the dignity of the whole person.

Motion Picture & Television Fund Health Centers

There are five health centers located throughout the Los Angeles, San Fernando and Santa Clarita Valley areas, in addition to the Motion Picture & Television Fund Hospital. MPIHP Participants who use these health centers have no out-of-pocket expenses for covered services.

Retirement Living for Every Need

The MPTF retirement community serves entertainment industry retirees seeking all levels of care, including independent and assisted living, skilled nursing and dementia care.

Social and Charitable Services

The Motion Picture & Television Fund is a safe haven, providing a vast array of social and charitable services which include temporary emergency financial assistance for eligible industry members, counseling, referral to community resources, and much more.

Elder Connection

Elder Connection is the trusted resource for entertainment industry members age 65 and older living in the community, and for those involved with their care.

The Samuel Goldwyn Foundation Children's Center

The center provides progressive day care for children from ages eight weeks to six years.

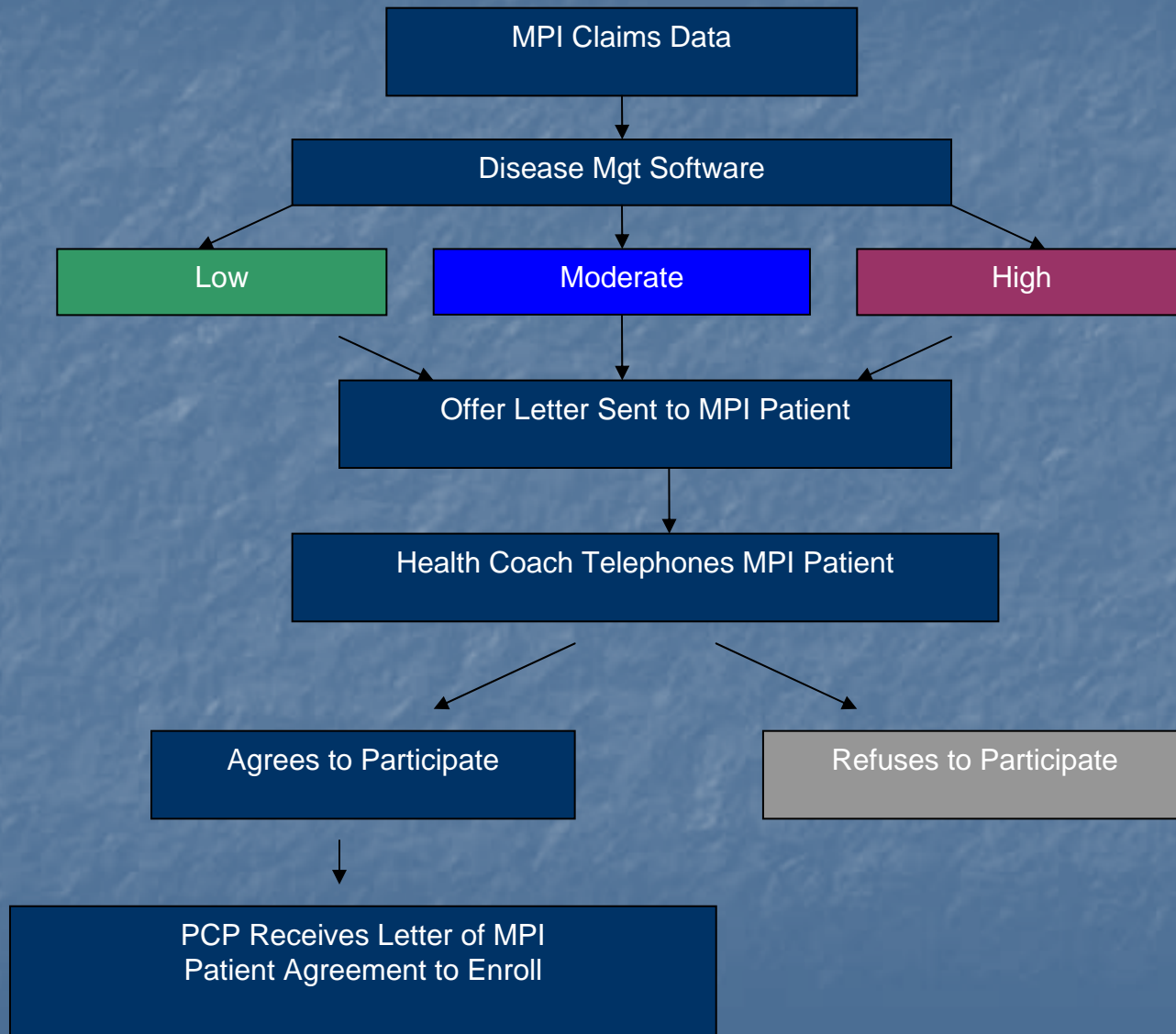
MPTF Foundation

Spearheading the fundraising that allows MPTF to provide charitable services is the MPTF Foundation. Whether you contribute a little or a lot, you can help provide for the thousands of individuals who turn to MPTF for assistance.

MPTF Disease Management Definition

- Disease management identifies populations with, or at risk for, established medical conditions.
- Proactive management of chronic disease can improve clinical outcomes, positively impact participant work performance & reduce plan spending.

Basic Disease Mgt Process



Basic Strategy

- Assess severity and risk factors
- Coach participant in **self-management** to encourage positive health outcomes
 - Compliance with medication
 - Compliance with guidelines
 - Complication prevention
- Education regarding disease process
- Maintain individual confidentiality
- Active, eligible MPI participants
- Completely voluntary

Disease/Condition
MPTF Disease
Management Program

Diabetes

Heart Failure

Coronary Artery Disease

Asthma

Chronic Obstructive Pulmonary
Disease

Low Back Pain

Definition of “Health Coaching”?

- Answer questions within the realm of health education
- Explain why it is important to follow physician orders
- Brainstorm solutions to barriers
- Cheerleader for the patient
- Help the patient help him/herself

Rapid Assessment View (RAV)

- Patient Demographics
- Early Detection Flags
- Facility Claims
- Conditions List (diagnoses)
- Services
- Provider Claims
- Medications

Diabetic Early Detection Flags

- * DIABETES OF MODERATE SEVERITY
- * DIABETIC AND NO INFLUENZA VACCINE
- * DIABETES AND ONLY 1 HEMOGLOBIN A1c IN PAST YEAR
- * DIABETES AND PERIPHERAL NEUROPATHY

(RAV) Medications

- Scripts filled at 3 different pharmacies

Synthetic Codeine - 11/29/06

Ace Inhibitors - 11/23/06

Metformin - 11/21/06

Duloxetine/Cymbalta - 11/21/06

Lansoprazole/Prevacid - 11/12/06

Blood Sugar Diagnostics - 10/08/06

Short-Acting Beta Antagonist - 05/29/06

Azithromycin/Zithromax - 03/21/06

Penicillin - 03/06/06

Sulfonamides - 12/03/05

Metronidazole - 12/03/05

Diabetes: Top Issues Identified at Assessment

- Overweight/Obesity with diabetes
- Member reports no pneumococcal vaccination
- No diabetes meal plan
- Member has not attended diabetes class
- No annual flu vaccination
- Member does not monitor blood glucose level as recommended

Cardiac: Top Issues Identified at Assessment

- Antiplatelet adherence concern
- Non-adherence to medication
- Overweight/Obesity with Coronary Artery Disease
- Member reports no pneumococcal vaccination
- Cholesterol testing frequency concern
- No annual flu vaccination
- Adherence to cholesterol reduction medication

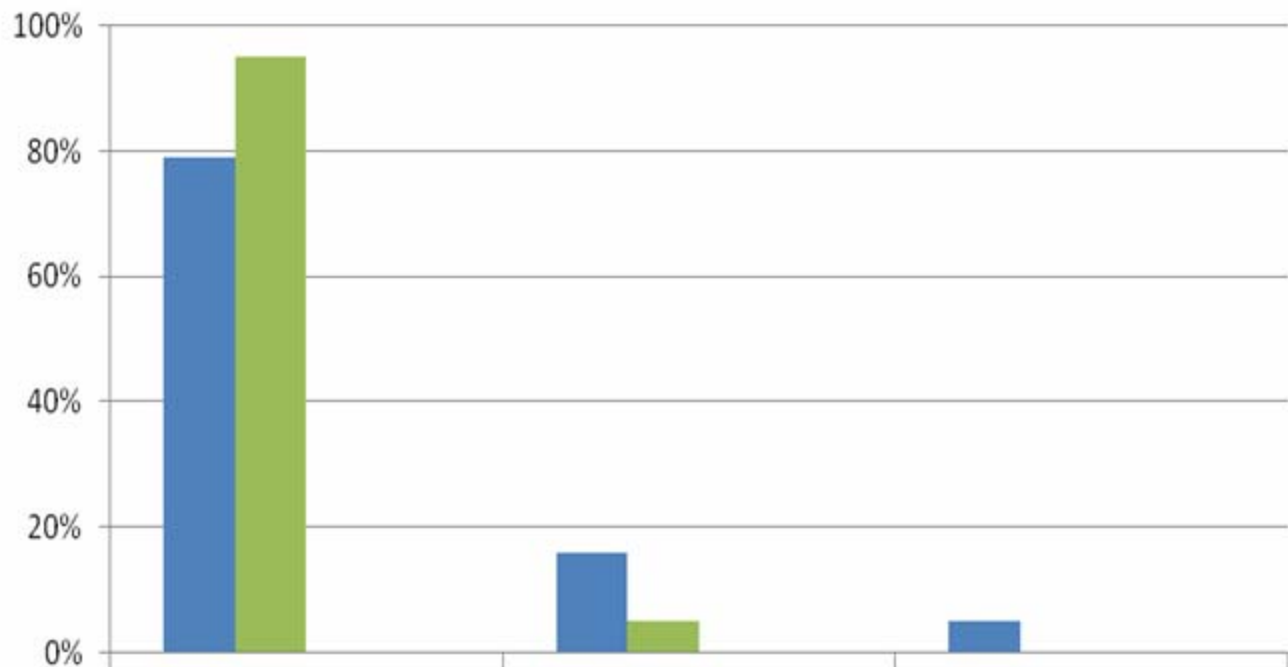
External Barriers

- Food served on the set
- Weight loss program
- Fear of losing employment opportunities
- Work schedule/location
- Unable to get appointment when time becomes available
- Patient states national guidelines not being followed by some clinical staff

Internal Barriers

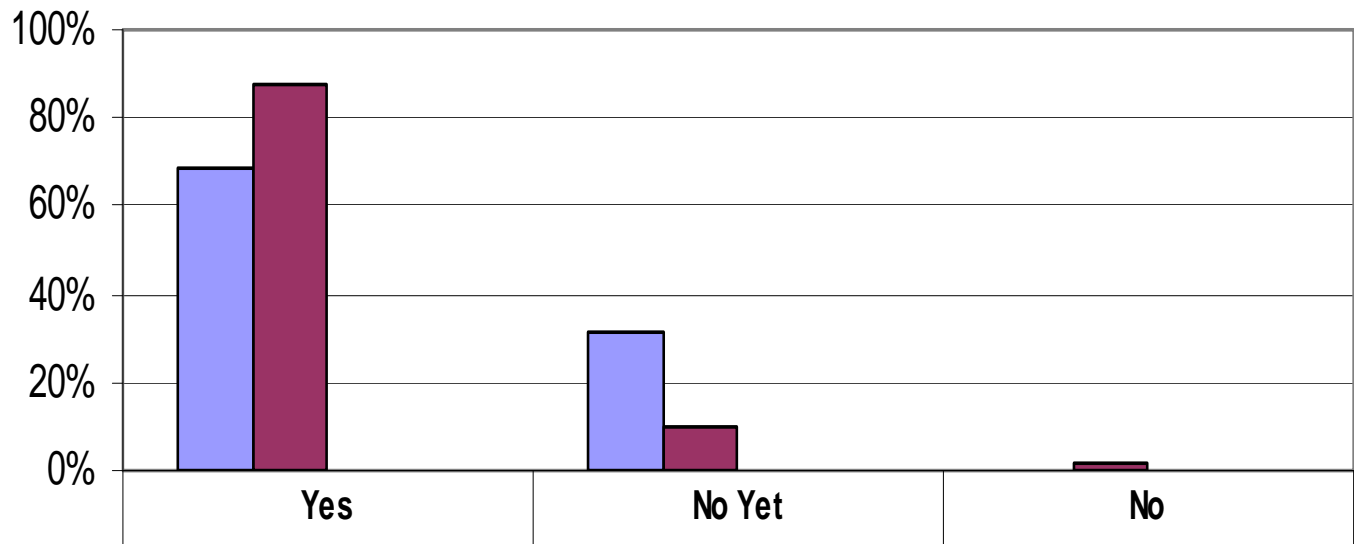
- Participant denies having disease
- Distance/travel time for appointments and/or classes
- Poor lifestyle habits
- Lack of motivation
- Poor communication/listening
- Possible cultural barriers/language
- Memory/education issues
- Resistance to change
- Financial

Did you feel the Health Coach adequately educated you regarding your condition?



	Satisfied	Neutral	Dissatisfied
■ July - Dec 2006 Percent	79%	16%	5%
■ Jan - June 2007 Percent	95%	5%	0
July - Dec 2006 Actual	15	3	1
Jan - June 2007 Actual	38	2	1

Did you make any changes in how you take care of yourself after reading the Action Plan and materials?



July-Dec 2006 Actual	9	4	0
Jan - June 2007 Actual	35	4	1

Patient Anecdotes

- 44 yr old male with diabetes who at the start of our program had an A1c of 11.1%. Since beginning the Disease Management program and through diet, weight loss and exercise has lowered his A1c in 9 months to 6.9%.

Patient Anecdotes

- 61 year old male, diagnosed with heart failure has enrolled his wife & himself in Wellness Picture Quit Smoking program, after 40+ years of smoking.

Testimonials

- *"Crystal clear influx of information – very uplifting – crème de la crème – there are no hacks there!"*
- *"I wasn't taking care of myself before because I thought it would be too hard. But now that I am doing it I found it has not been. Thank you for inspiring me."*
- *"This program is great. The staff is supportive, informative & approachable."*

Working on....

- Use patient action plans for MD appts
- Validate patient reported tests results
- Provide MD with Rapid Assessment View
- Evaluate the clinical relevancy
- Evaluate long term savings