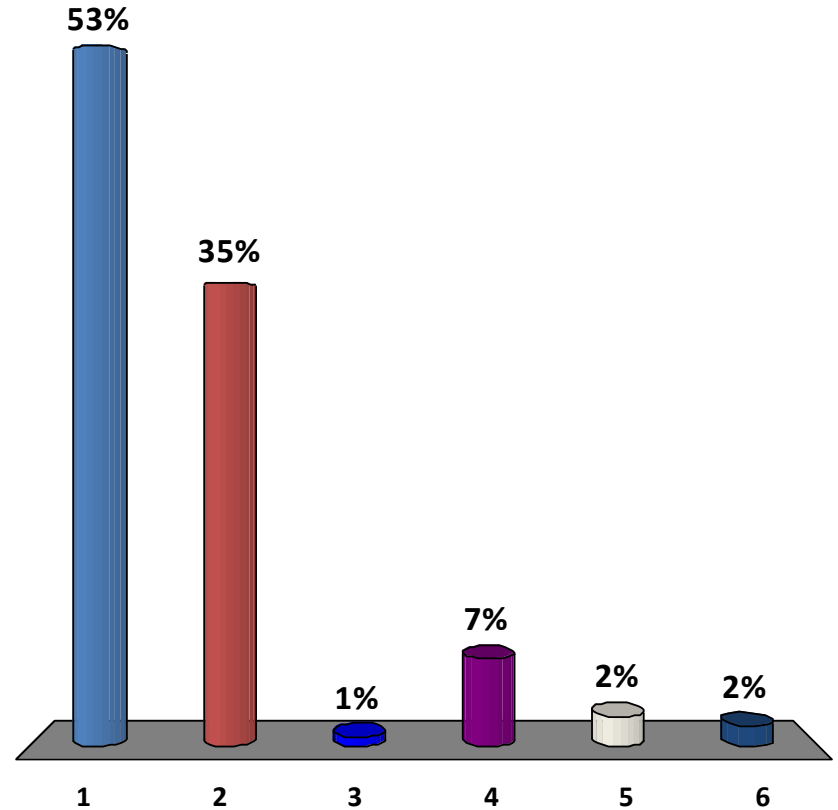


I am a...

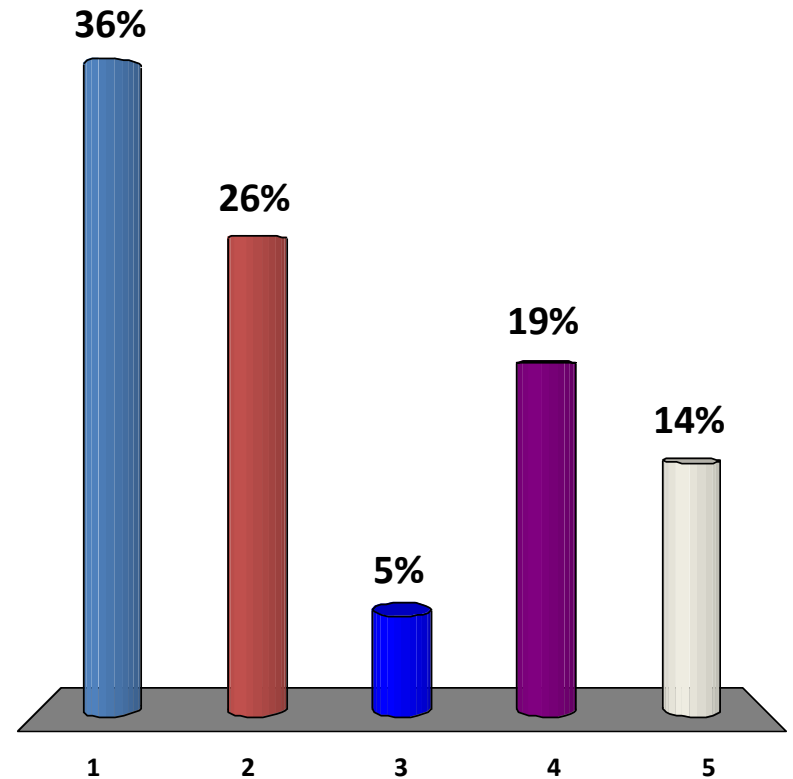
1. Physician
2. UR
3. Coding
4. Revenue Cycle Leader
5. Support vendor/outside the facility
6. Just sounded like fun



	1	2	3	4	5	6
2015	52%	31%	2%	11%	3%	0%
2014	44%	37%	3%	8%	4%	3%
2013	31%	37%	6%	11%	1%	14%
2012	44%	37%	3%	8%	4%	3%

If a PA, how many years experience have you had with the PA role?

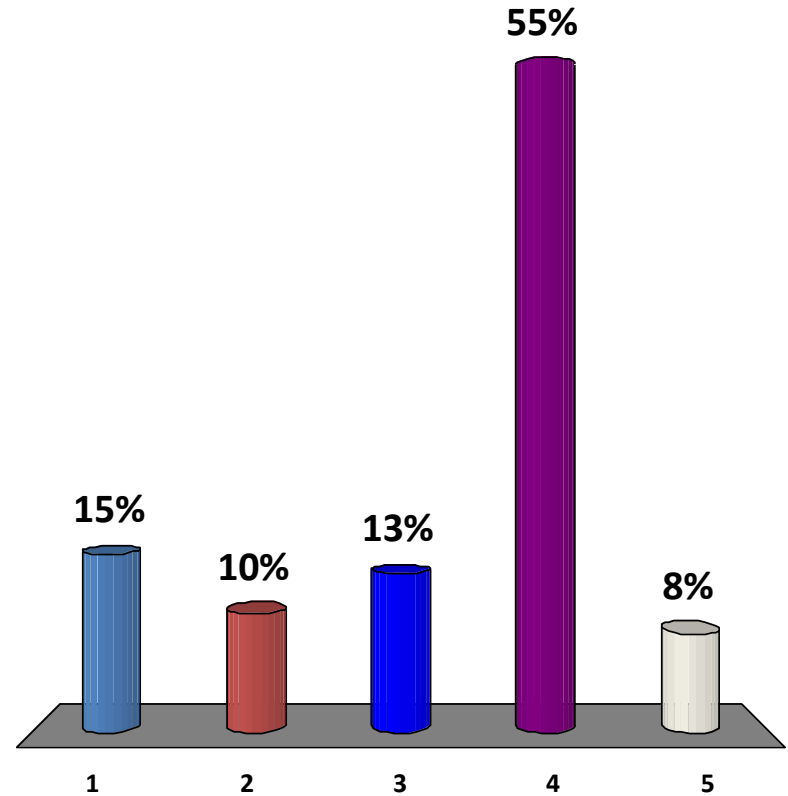
1. Less than 1
2. 1-3
3. 3-5
4. 5 or more
5. None – just learning



	1	2	3	4	5
2015	26%	25%	21%	11%	17%
2014	34%	17%	13%	19%	17%
2013	14%	25%	11%	7%	43%
2012	34%	17%	13%	19%	17%

If UR, how many years of experience have you had with the UR role?

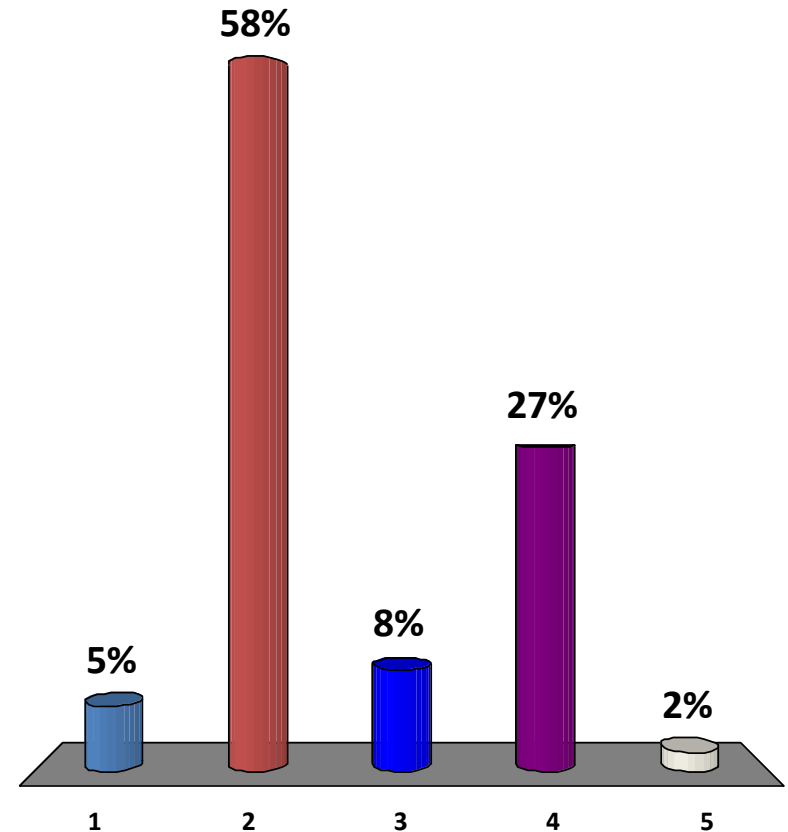
1. Less than 1
2. 1-3
3. 3-5
4. 5 or more
5. None – just learning



2015	13%	9%	13%	59%	7%
2014	14%	10%	20%	49%	6%
2013	9%	16%	7%	56%	13%
2012	16%	10%	20%	49%	6%

I work for...

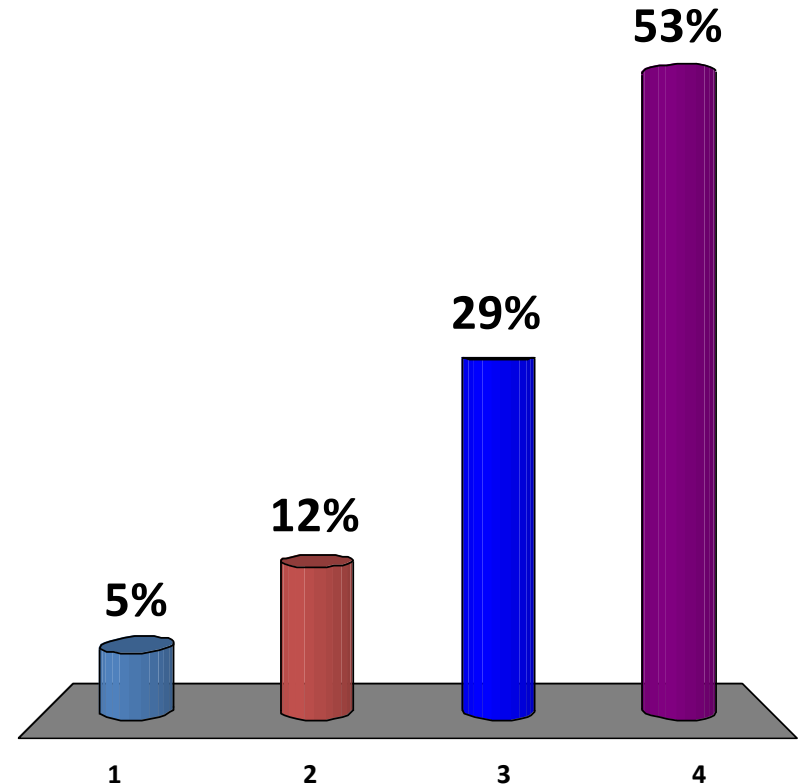
1. Critical access hospital
2. Health system
3. Solution company/
outside the hospital
4. Free standing hospital
5. Other



	1	2	3	4	5
2015	9%	55%	7%	28%	2%
2014	11%	67%	6%	14%	3%
2013	6%	63%	1%	23%	7%
2012	11%	67%	6%	14%	3%

My Hospital Is...

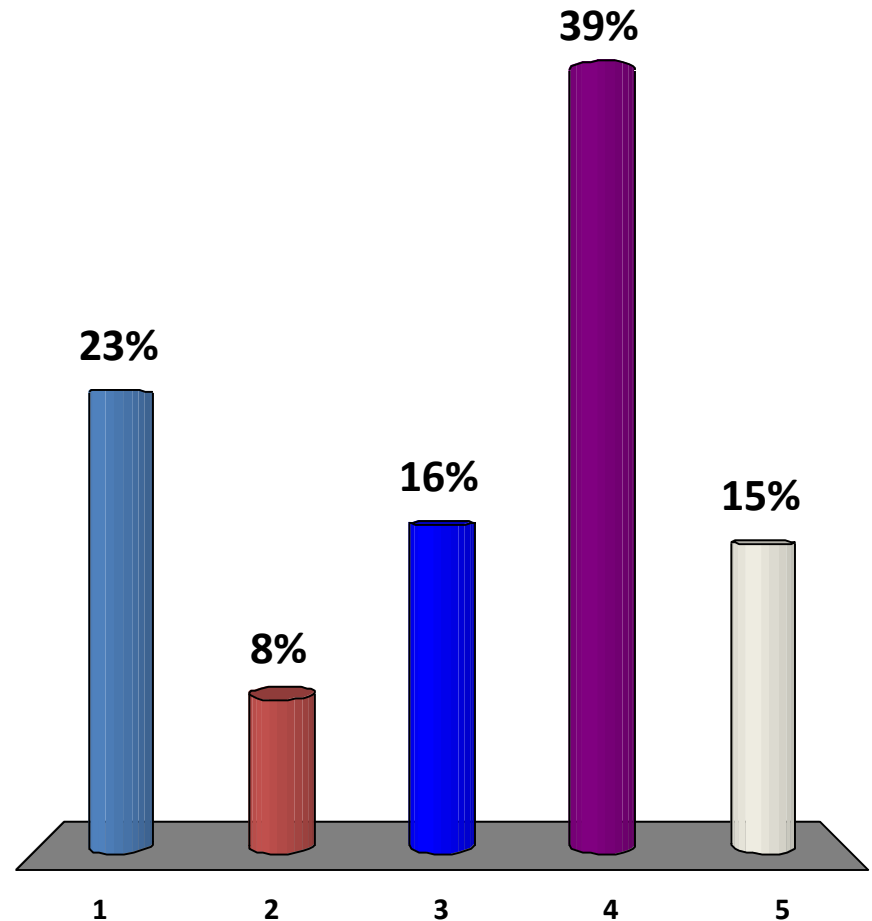
1. Under 25 beds
2. 50-150 beds
3. 150-300 beds
4. Over 300 beds



	1	2	3	4
2015	7%	14%	34%	45%
2014	9%	15%	33%	43%
2013	8%	20%	28%	45%
2012	9%	15%	33%	43%

What % of an FTE is your Physician Advisor?

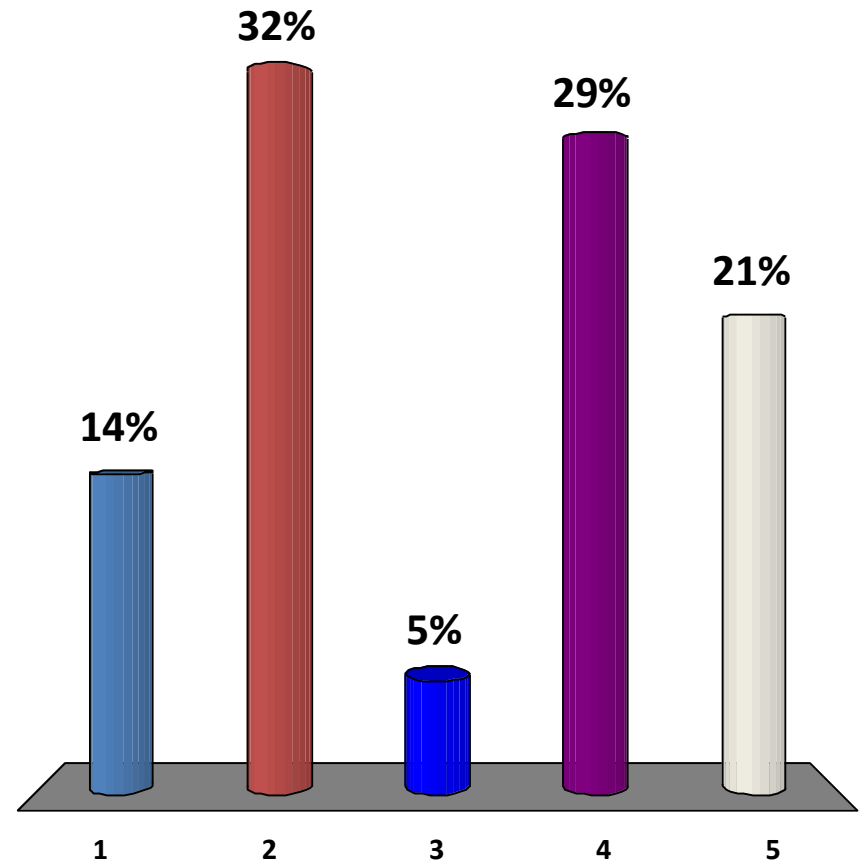
1. 8 hrs a week
2. Up to 16 hrs a week
3. Up to 25 hrs a week
4. More than 25 hrs a week
5. Don't have a PA



2015	15%	6%	9%	41%	29%
2014	18%	8%	8%	38%	29%
2012	18%	8%	8%	38%	29%

Your current UR staff work:

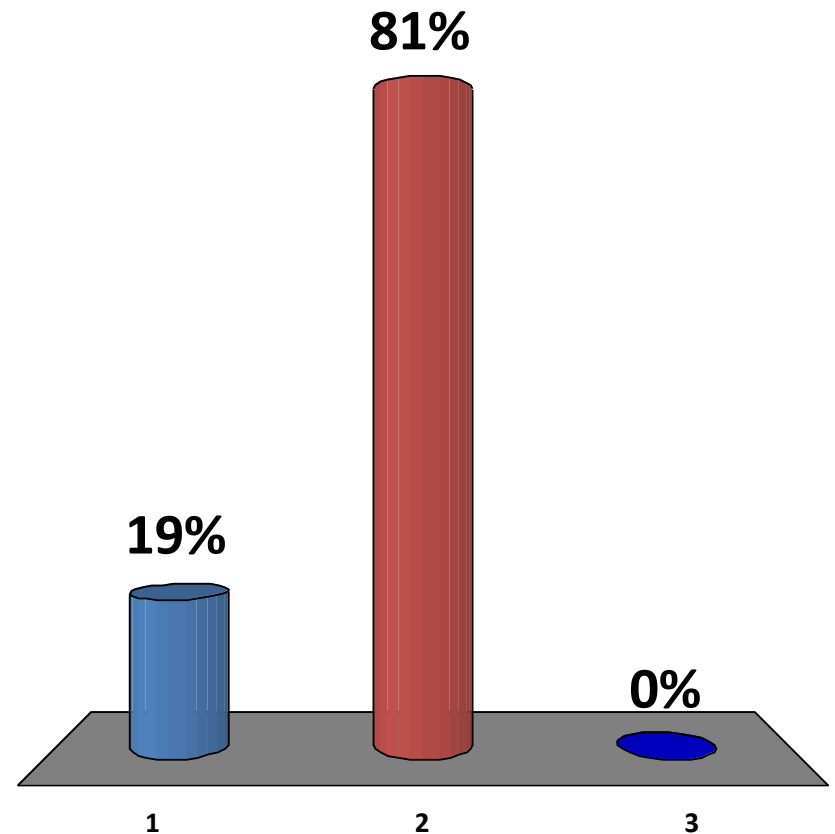
1. M-F business hours
2. M-F plus with limited night and weekend
3. M-F plus on call for nights and weekends
4. M-F plus work limited weekends onsite
5. Work extended hours /beyond business hours & onsite 12 hours or more



2015	19%	30%	10%	23%	17%
2013	14%	18%	12%	35%	22%

Do your ER providers have admitting privileges?

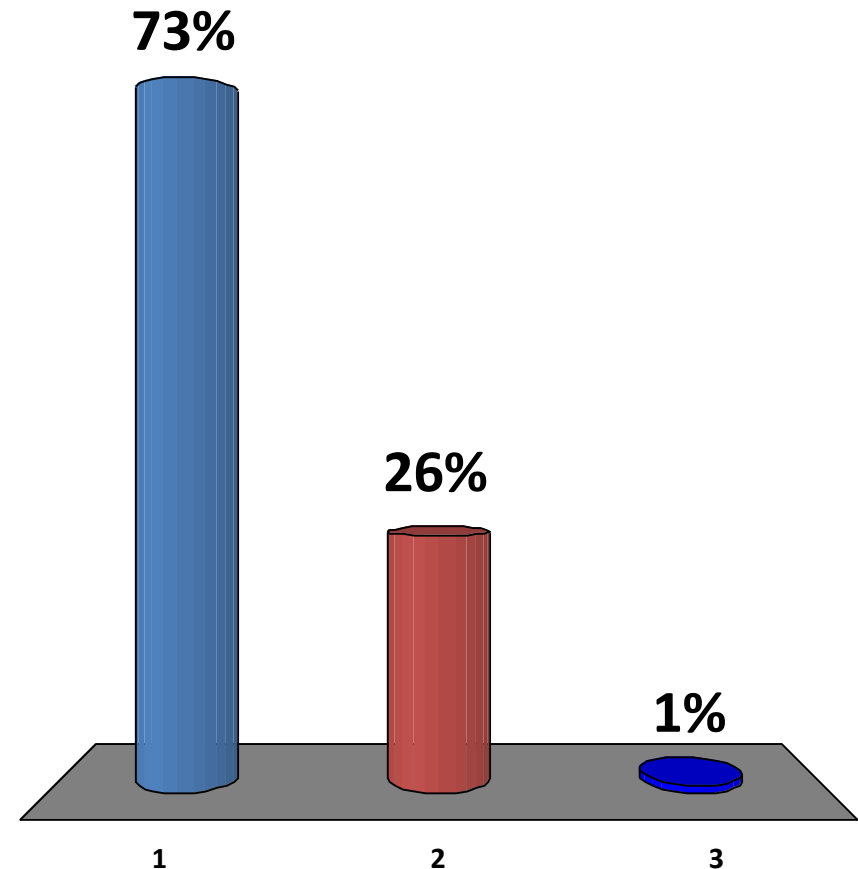
1. Yes
2. No
3. Don't Know



	1	2	3
2015	21%	75%	4%
2014	15%	84%	1%
2013	3%	81%	16%
2012	15%	84%	1%

Are your ER providers:

1. Contracted
2. Hospital employees
3. Don't Know



	1	2	3
2015	81%	18%	1%
2014	81%	18%	1%
2013	60%	39%	1%
2012	81%	18%	1%

Have you attended a Boot Camp before?

1. Yes
2. No

