

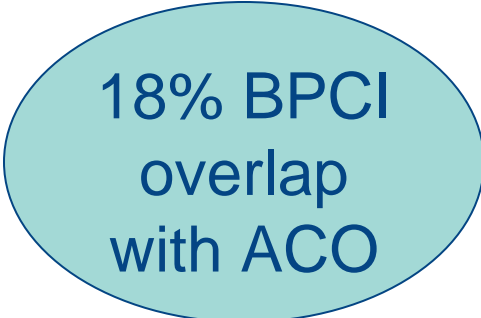
Inova Health System

Tricia Nguyen, MD, MBA
SVP Population Health
June 7th, 2018

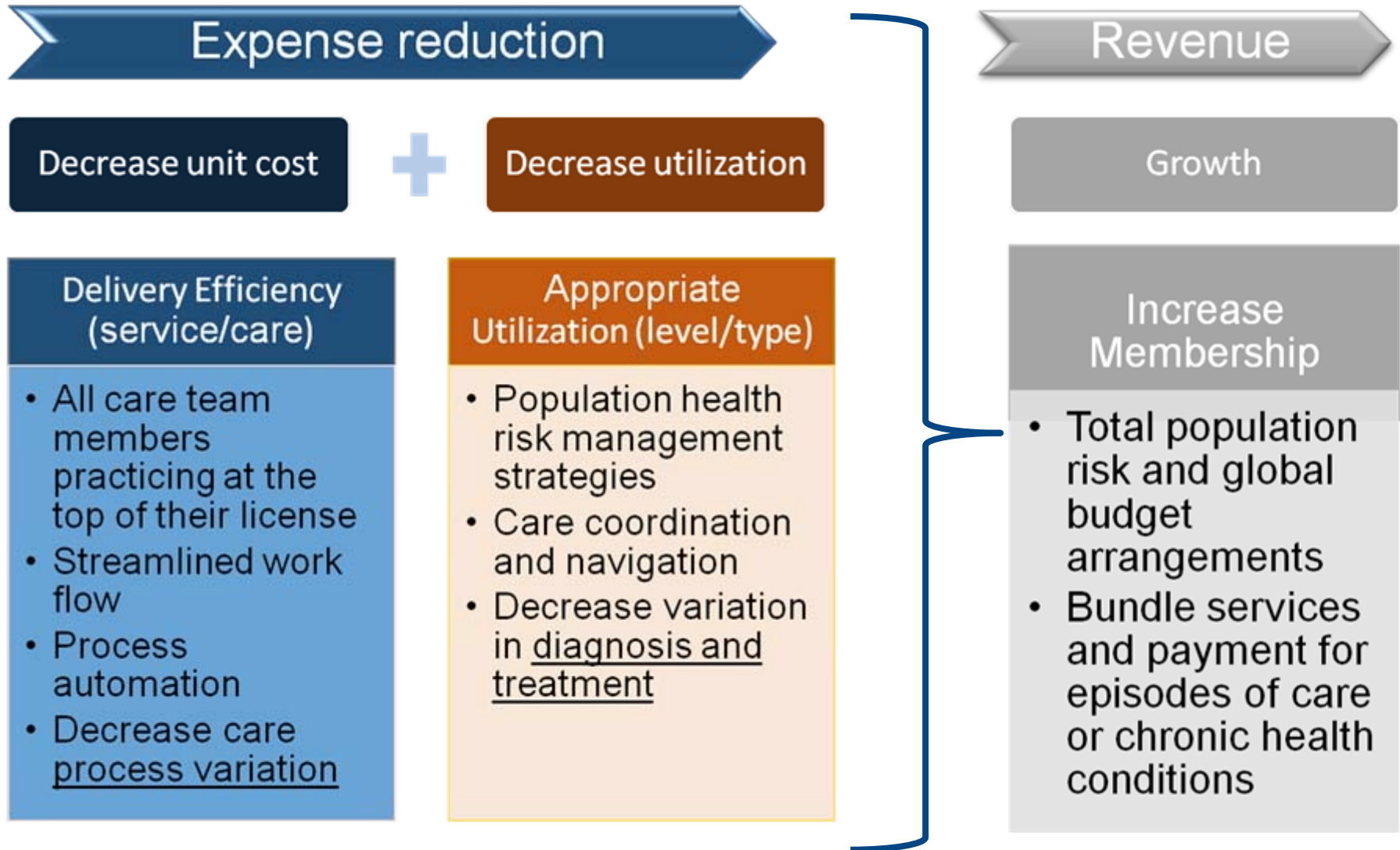


- Northern Virginia - 2.5 million population
- \$3B Revenue
- 5 hospital campuses
- 1,796 beds
- 550 employed MDs (110 PCP)
- Health Plan (Commercial & Medicare)
- CIN/ACO: ~2600 Providers
- 100K Attributed Lives
- Home Health, SNF, Assisted Living, Acute Rehab, Behavioral Health

- BPCI Model 2 - July 2015 through December 2017
 - Lower Joint at 5 hospitals – 3,070 episodes
 - CHF/PCI at Inova Fairfax – 1,380 episodes
- MSSP Track 1
 - Signature Network – 12,000 lives (Inova PCPs only)
 - Signature Partners in Health – 22,000 lives



18% BPCI
overlap
with ACO



... while increasing quality and member experience