

Achieving HIPAA Compliance in a Non-Acute Environment: Challenges & Strategies

Craig D. Azoff, Director Administrative Information Systems

Bill Luecken, Senior Director Information Systems

Eric Steinhardt, Security Manager

13th Annual HIPAA Summit

September 26, 2006



METROPOLITAN JEWISH HEALTH SYSTEM

Why This Topic? What Are We Going To Discuss?



Most HIPAA seminars and lectures tend to favor topics relating to acute hospitals or doctors' offices. Non-acute facilities, like MJHS, face separate challenges. In this lecture we talk about:


- ☺ Acute vs. Non-Acute
- ☺ MJHS as a non-acute facility
- ☺ "Unique" Challenges
- ☺ MJHS Approach to Compliance



Acute vs. Non-Acute




Dictionary Definition

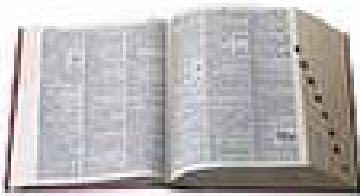
 Acute (Merriam-Webster On-Line) = having a sudden onset, sharp rise, and short course <acute disease> OR being, providing, or requiring short-term medical care (as for serious illness or traumatic injury) <acute hospitals>

 Non-Acute = obviously, the opposite of acute; long term medical care

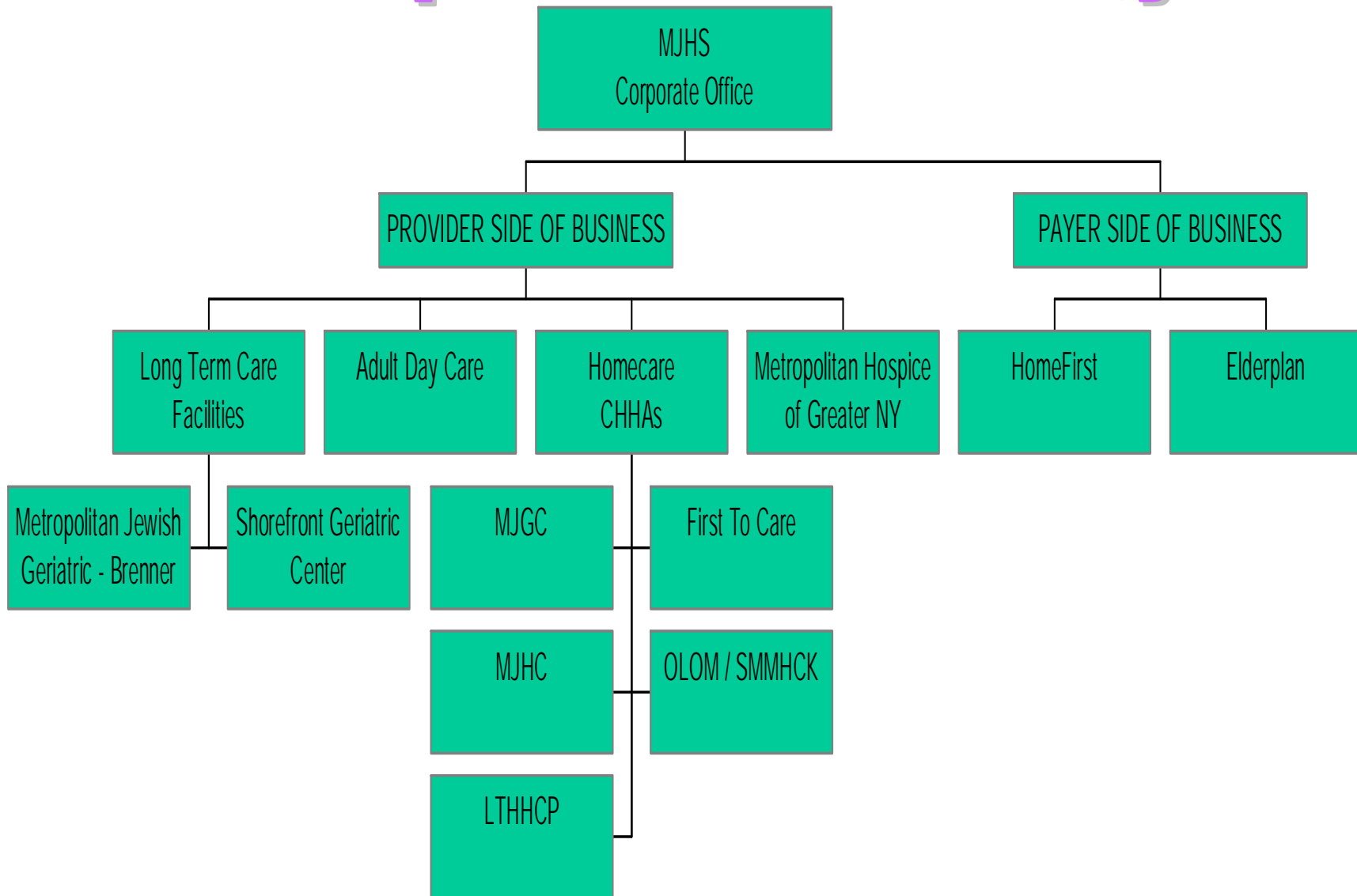
"Operational" Definition

 Acute = Doctor's Office, Hospital, Emergency Room

 Non-Acute = Long-Term Care Facility, Hospice, Homecare, Palliative Care, HMOs



Who is Metropolitan Jewish Health System?



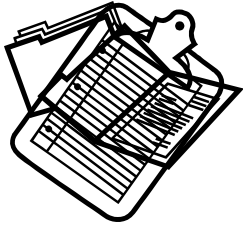
Challenges in Non-Acute Care Environment

- ☒ Corporate Issues
- ☒ PHI on Tablet PCs
- ☒ Home Health Aide Vendors
- ☒ Wound Care Pictures

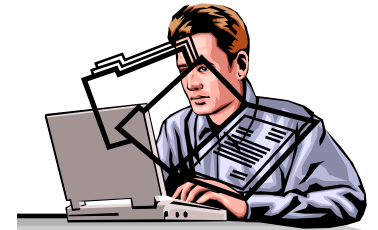


Corporate Issues

- 🌐 All Employees of MJHS; encryption needed?
- 🌐 Various Reporting Requirements
 - 🌐 secure transmission vitally important
 - 🌐 837s and 835s
- 🌐 BAAs amongst entities
- 🌐 NPI - multiple core applications
- 🌐 Corporate-wide Disaster Recovery Plan
- 🌐 Lack of funding - little \$ in corporate budget for HIPAA
- 🌐 Users lack of technical expertise



Tablet PCs



- 📱 PHI “floating around” on tablet PCs
 - 📱 80 current users - eventually 450 across 5 agencies
 - 📱 Data usually does not “leave the building” in acute care environment
 - 📱 Minimum necessary issues
 - 📱 Protecting PHI and securing network access
 - 📱 Easy user access to data



Home Health Aide Vendors

Home Health Aide Vendors

 Desire to have HHA vendor submit electronic invoice

 Some vendors are small with limited technical resources

 File format - need to meet EDI transaction rules?



Wound Care Pictures



- ❑ Field Nurses take pictures of patient wounds to send to a consultant
- ❑ Pictures put on disk then handed to consultant; delays treatment decisions
- ❑ Only a few shared cameras resulting in availability and pick-up issues
- ❑ Request to provide nurses with ability to take pictures and transmit securely to consultant

Decisions and Compromises



PHI on Tablet PCs

Home Aides

Could Miss

Wound Care Pictures





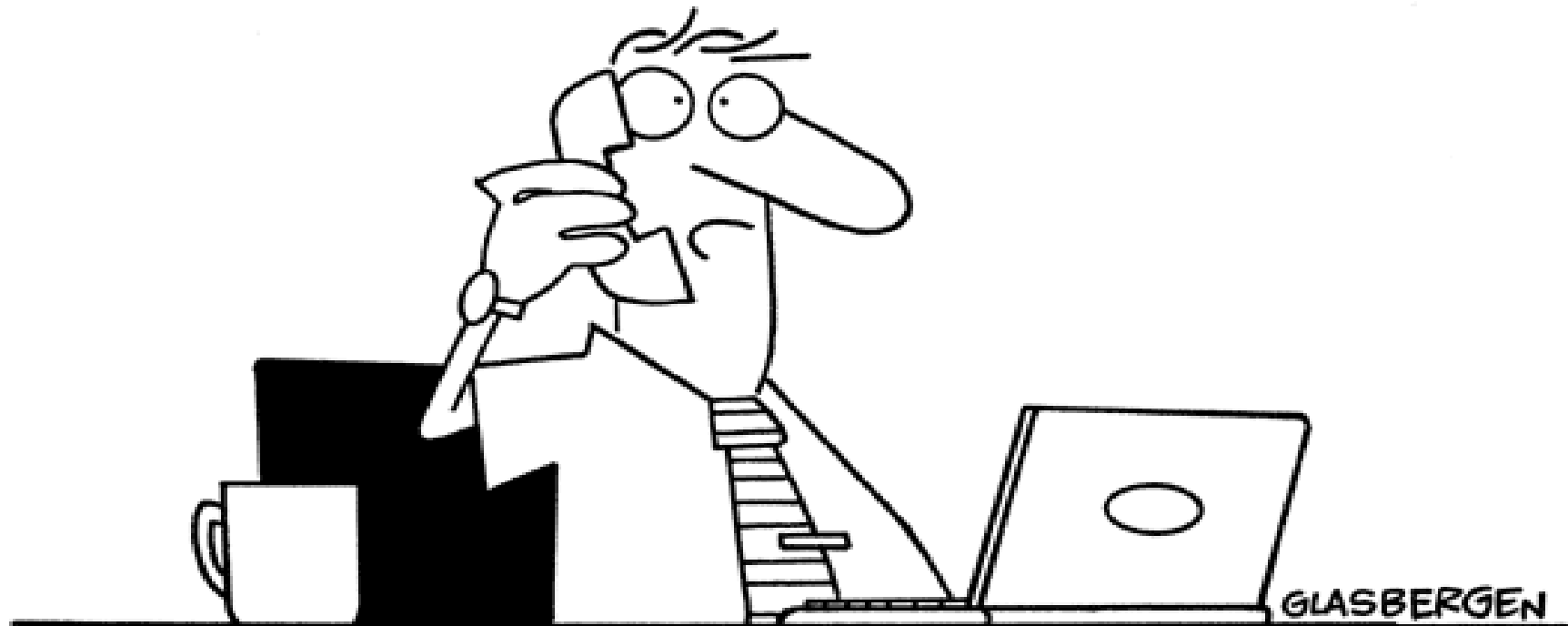
“I’m sure there are better ways to disguise sensitive information, but we don’t have a big budget.”

Copyright 2002 by Randy Glasbergen.
www.glasbergen.com



“Encryption software is expensive...so we just rearranged all the letters on your keyboard.”

Copyright 2004 by Randy Glasbergen.
www.glasbergen.com



**“You should have received it by now!
We’re not allowed to transmit confidential information
by telephone, fax, or e-mail, so I sent it telepathically.”**

Decisions and Compromises (cont.)

PHI on Tablet PCs

- 📁 FIRST RESPONSE - use login IDs and passwords
 - 📁 Windows, VPN, Groupwise, Network, Application, Disk encryption passwords
 - 📁 Secure policy, but Help Desk nightmare
- 📁 FINAL COMPROMISE
 - 📁 Policy - no ePHI stored locally
 - 📁 No Microsoft Office apps on mobile devices, just viewer only
 - 📁 VPN accounts - specific to device, not user
 - 📁 VPN password specific to device; easy to remember, difficult to guess
 - 📁 Encryption of data at rest built-in to apps
 - 📁 No Groupwise or Windows login
 - 📁 Network and Application logins & passwords required for access to network & e-mail and to protect patient data

Decisions and Compromises (cont.)

Home Health Aide Vendors

- 🏠 Vendor files are contractor invoices, not claims - may use proprietary format, not EDI
- 🏠 Vendors e-mail invoices using PGP encryption
- 🏠 MJHS technical operations assists with set-up of PGP keys
- 🏠 No need for MJHS to maintain FTP site and vendor log-in accounts

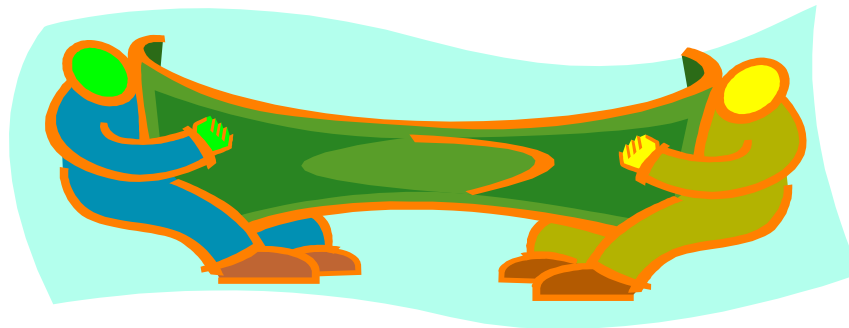
Decisions and Compromises (cont.)

Wound Care Pictures

- 📷 Nurses given cameras
- 📷 Pictures saved on a disc
- 📷 Disc information copied to the network
- 📷 E-mail without the PHI sent to consultant
- 📷 Consultant given access to the application where information resides

Decisions and Compromises (cont.)

- ❏ Do not spend on technology for technology sake
 - ❏ Compliance via strong policy and procedure
 - ❏ Thorough risk analysis
 - ❏ IT disaster recovery
- ❏ Lots and lots of training
 - ❏ HR handled face-to-face training
 - ❏ On-line product shared across GNYHA
- ❏ Lots and lots of documentation



Decisions and Compromises (cont.)

- 🖥️ Data exchanged between staff across entities - no encryption needed
- 🖥️ MJHS companies signed BAAs with each other
- 🖥️ NPI
 - 🖥️ Corporate-wide committee formed
 - 🖥️ Application NPI Readiness Analysis
 - 🖥️ Each entity responsible for enumeration

Could - MJHS

THE END

Any Questions